

INNOVATIVE
INVITING
INVIGORATING



NEXUSPARK NOW OPEN

RETAIL SPACE AVAILABLE | FOR LEASE

For Information Contact: **Patricia Tesluk**
E: Ptesluk@ccim.net
T: 317-789-8181

VR VERITAS
REALTY
www.VeritasRealty.com

NEXUSPARK RETAIL SPACE

Columbus, IN | FOR LEASE

PROPERTY OVERVIEW

INNOVATIVE ■ INVITING ■ INVIGORATING

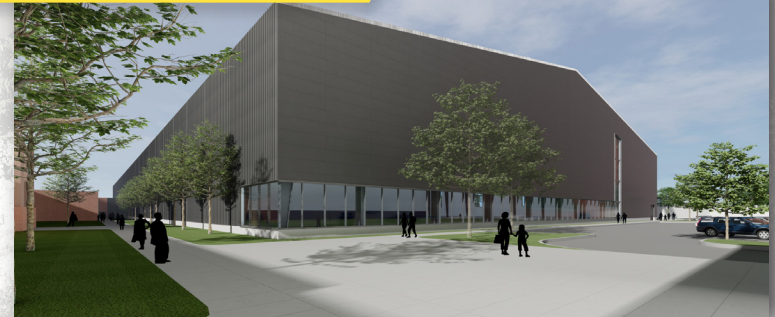
- **Innovative** - Encompassing 510,000 sf NexusPark features a diverse mixed-use facility where health, sports, fun, learning and shopping share a common platform. All things in one place, an innovative design melds a wellness facility, exercise, rehab center and sports facility into a transformative destination for recreation and tourism alike.
- **Inviting** - Welcome to our unique campus where families, young professionals, college students and visitors to Columbus share common interests and interact daily. NexusPark is the “go to” community destination for the convergence of wellness, recreation and retail. Thousands of tourists are drawn to Columbus each year by its’ world-famous architecture and community festivals. We invite visionary retailers, like you, to seize the opportunity to thrive from the built-in traffic of over 200 employees and 1,000 daily visitors.
- **Invigorating** - For QSR retail and service establishments this is a market that cannot be overlooked. The daily traffic plus the thousands of visitors to the Fieldhouse will be a formidable ground in which to grow and expand your business.

DEMOGRAPHICS	3 MILE	5 MILE	10 MILE
Population:	43,222	55,887	84,884
Daytime Population:	35,356	41,221	60,834
Households:	18,077	22,870	34,018
Avg. Household Income:	\$95,065	\$101,742	\$103,045

RENDERING
Exterior Park at 25th Street



RENDERING
150,000 SF Sports Fieldhouse



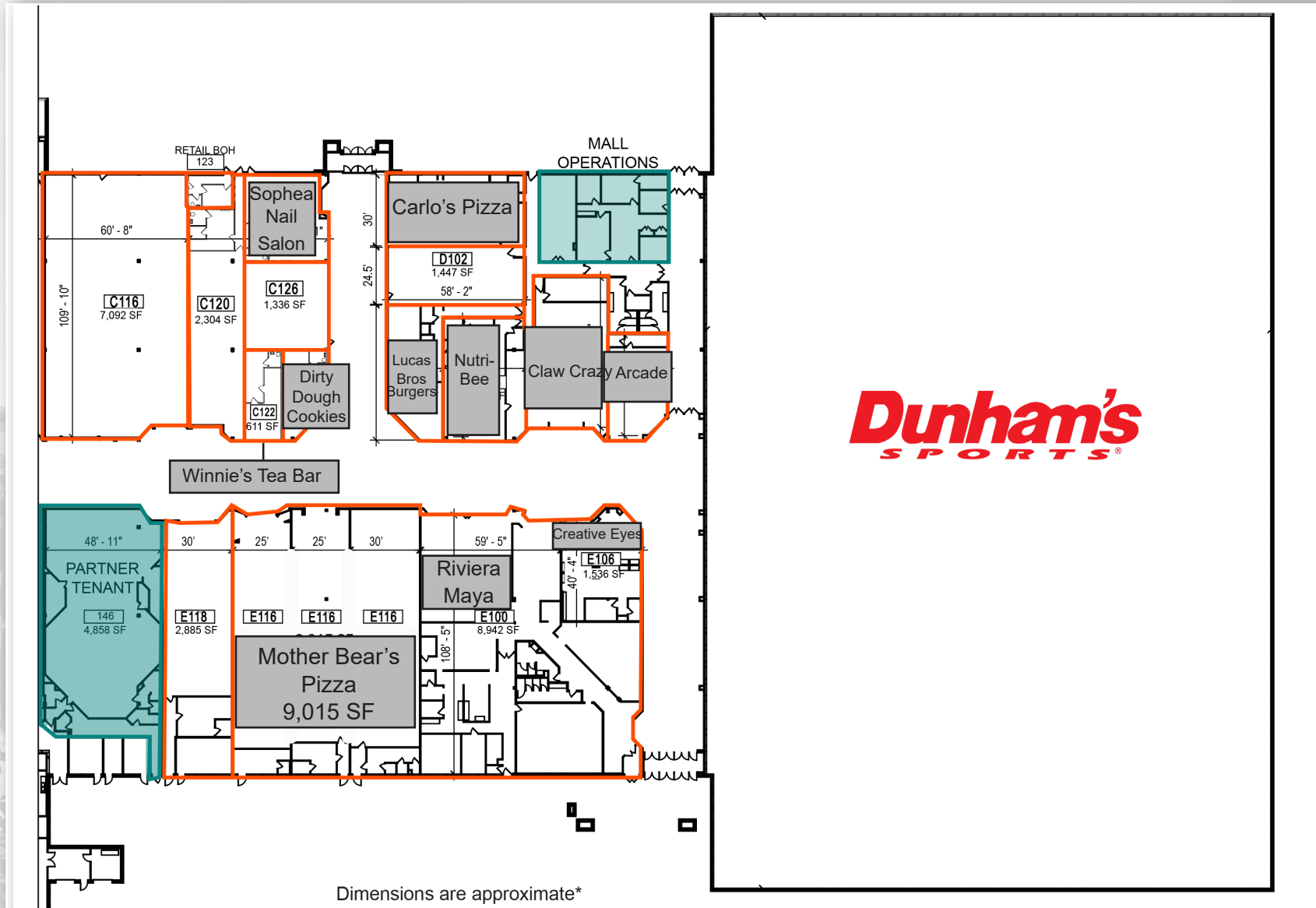
RENDERING
Exterior Front Entrance



NEXUSPARK RETAIL SPACE

Columbus, IN | FOR LEASE

RETAIL
SITE PLAN



Dunham's
SPORTS®

NEXUSPARK RETAIL SPACE AVAILABLE | FOR LEASE 2380 25TH ST, COLUMBUS, IN

PROJECT SITE PLAN

Welcome to NexusPark, a distinctively different mixed-use complex. This project features a 120,000 SF Health & Wellness Center, a 150,000 SF Fieldhouse, a Community Center complete with a state-of-the-art Fitness Center and 128,000 SF of Retail

We invite visionary retailers, like you, to seize the opportunity to thrive from the built-in traffic of over 200 employees and 1,000 daily visitors. Weekends see a surge in foot traffic with local and regional amateur sporting events.

Now is the time to secure your space-- we have limited availability.



- Office and treatment hub
- ~220 staff and employees (M-F)
- ~1,000 visits per day

FITNESS & MULTIPURPOSE AREA

- Fitness Center (5a -10p daily)
- Mall Walkers (mainly seniors daily)
- Summer programming (May – August mainly kids)
- Community meetings
- Park Office (10 employees)

OUTDOOR
PARK AREA
+/- 3 ACRES

FIELDHOUSE

- 1.5 full size soccer fields or up to 16 basketball courts
- Local Users weekdays – mainly middle and high schools with some college
- Regional users on weekends – mostly travel teams and tournaments

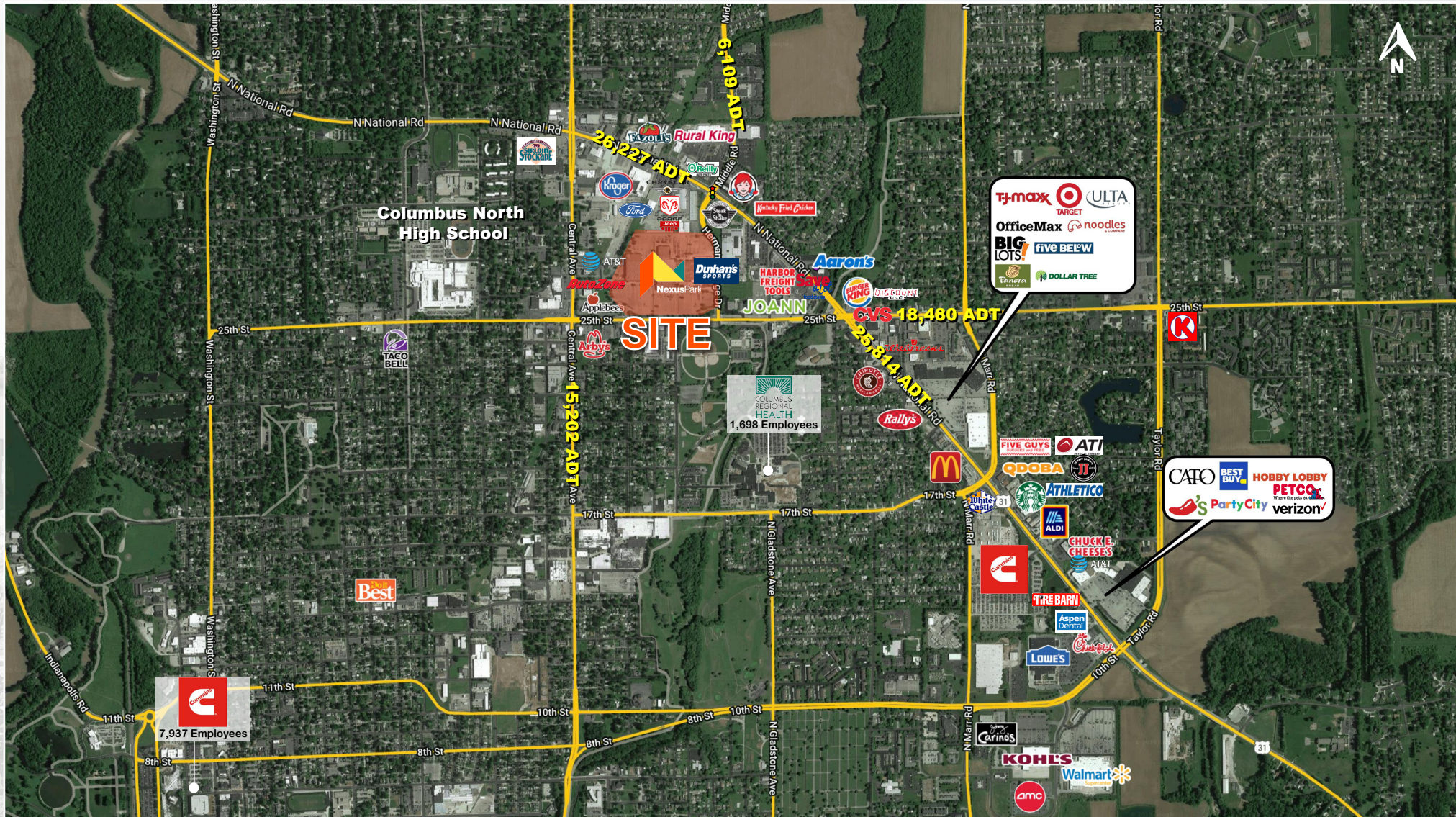
RETAIL
SEE PAGE 3
SITE PLAN

*All visit estimates based on design and programming
assumptions subject to change*

NEXUSPARK RETAIL SPACE

Columbus, IN | FOR LEASE

MARKET
AERIAL



INNOVATIVE

■ INVITING ■

INVIGORATING

INNOVATIVE

All things in one place. Innovative design melds a wellness facility, exercise, rehab center and sports facility into a transformative destination for recreation and tourism alike.

INVITING

Welcome to the most diverse mixed-use project where health, sports, fun, learning and shopping share a common platform.

INVIGORATING

Play with the best. Enjoy sports local, regional and national tournaments plus an event center that can host everything from a high school graduation, wedding or a regional business expo. The options are endless.



For More Information Contact:

Patricia Tesluk

E: Ptesluk@ccim.net

T: 317-789-8181

Information within this brochure has been obtained from sources believed reliable, but we make no representations or warranties, expressed or implied, as to the accuracy of the information. Prospective tenant and tenant representatives must verify the information and bears all risk for any inaccuracies as it relates to property and market information.