

For Lease

Carson City Office Space



[Spec Suite Virtual Tour](#) 

5% Broker Fee to Procuring Broker

1000-1150 E. William St.
Carson City, NV 89701

Michael Keating, SIOR
Partner
775.386.9727
mkeating@logicCRE.com
S.0174942

Michael Dorn
Vice President
775.453.4436
mdorn@logicCRE.com
S.0189635

Listing Snapshot



\$1.60 PSF FS*
Lease Rate



± 135 - 27,160 SF
Available Square Footage



GC
Zoning

Property Highlights

- Turn-key office space centrally located
- Well established office park with a variety of state tenants
- Ample parking
- Situated along E. William St. with ± 25,500 CPD
- Close proximity to the State Capitol Building
- Full service lease excluding internet
- Variety of restaurant and retail options nearby
- Demising options available

**\$1.00 PSF Introductory rate on select suites - Contact broker for details*

Demographics

	1-mile	3-mile	5-mile
2025 Population	14,295	54,042	60,353
2025 Average Household Income	\$77,992	\$91,851	\$94,438
2025 Total Households	6,267	22,327	24,203

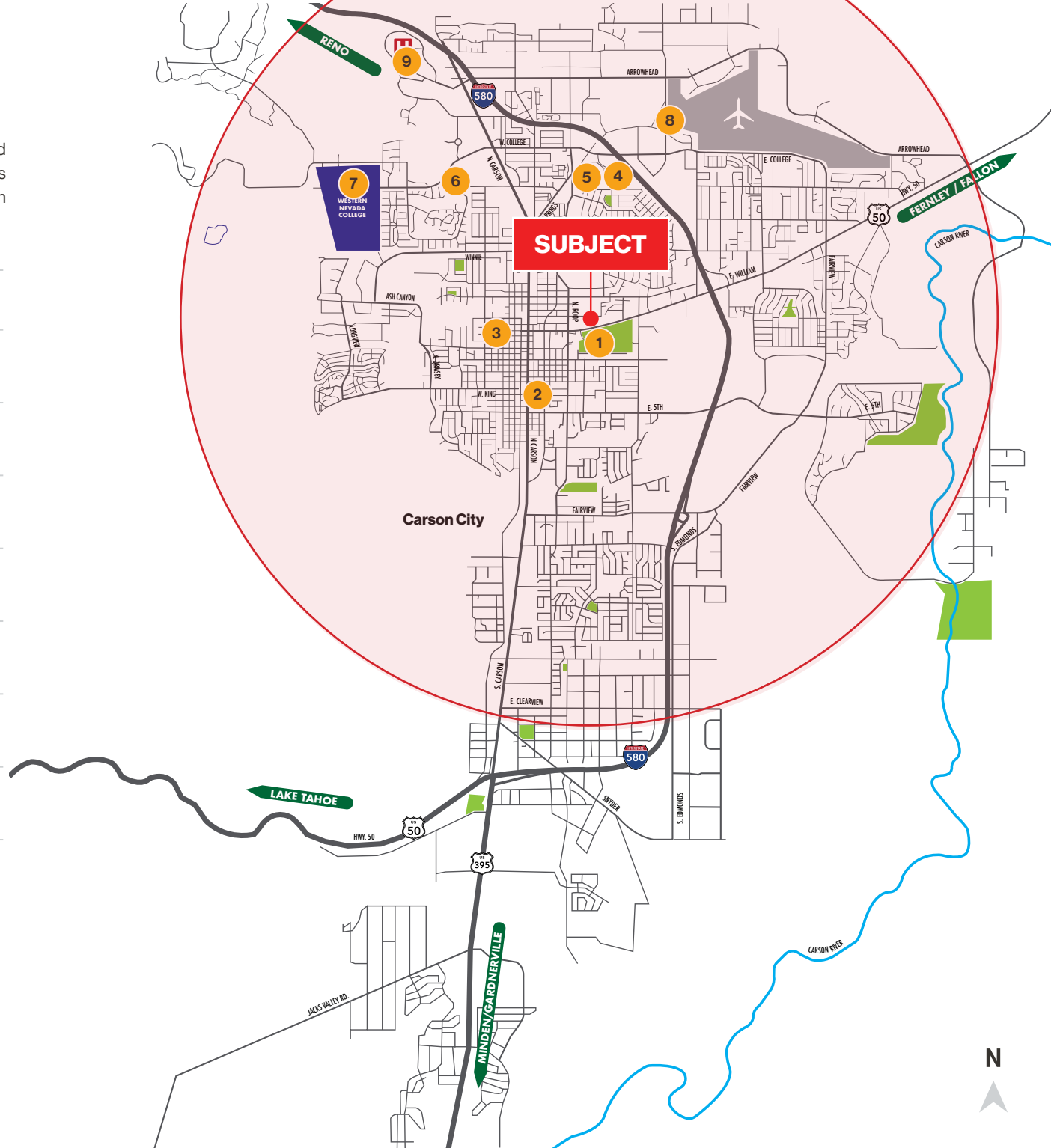


Vicinity Map

The campus is strategically located in a dense and mature residential area servicing ± 60,353 residents with an average household income of \$94,438 within a 5-mile radius.

Amenities within a 3-mile radius

- 1
Mills Park
 - 0.02 miles
- 2
Nevada State Capitol
 - 0.73 miles
- 3
Mountain Medical Pulmonary Center
 - 0.80 miles
- 4
The Home Depot
 - 1.00 mile
- 5
Walmart Supercenter
 - 1.1 miles
- 6
Silver Oak Golf Club
 - 1.78 miles
- 7
Western Nevada College
 - 1.99 miles
- 8
Carson City Airport
 - 1.73 miles
- 9
Carson Tahoe Regional Medical Center
 - 2.52 miles

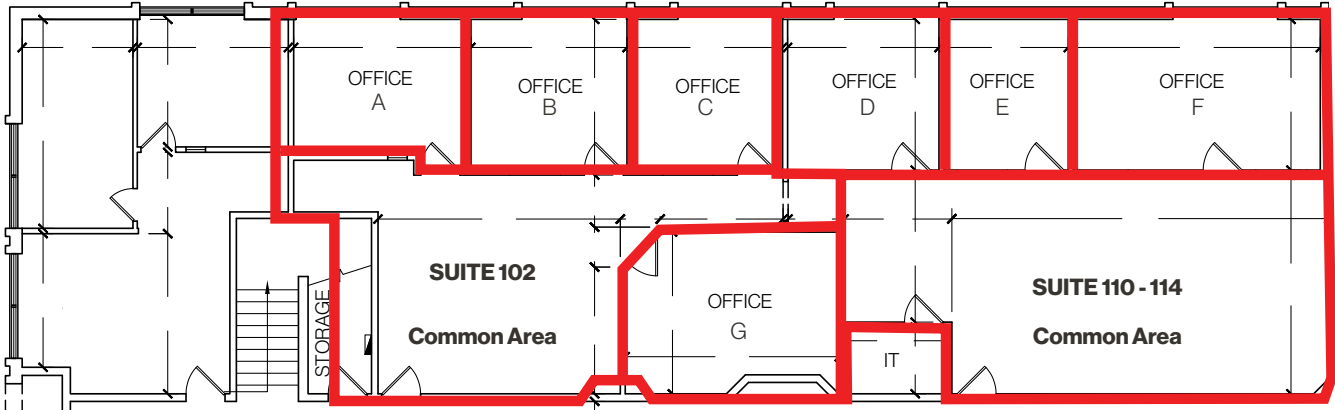






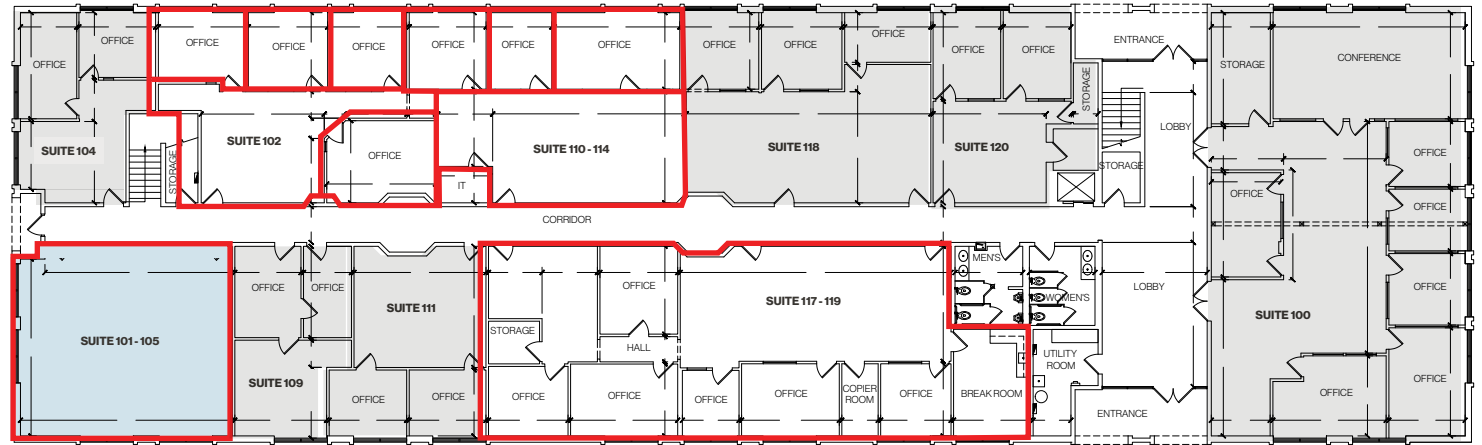
First Floor Executive Suite Floor Plan

 Available

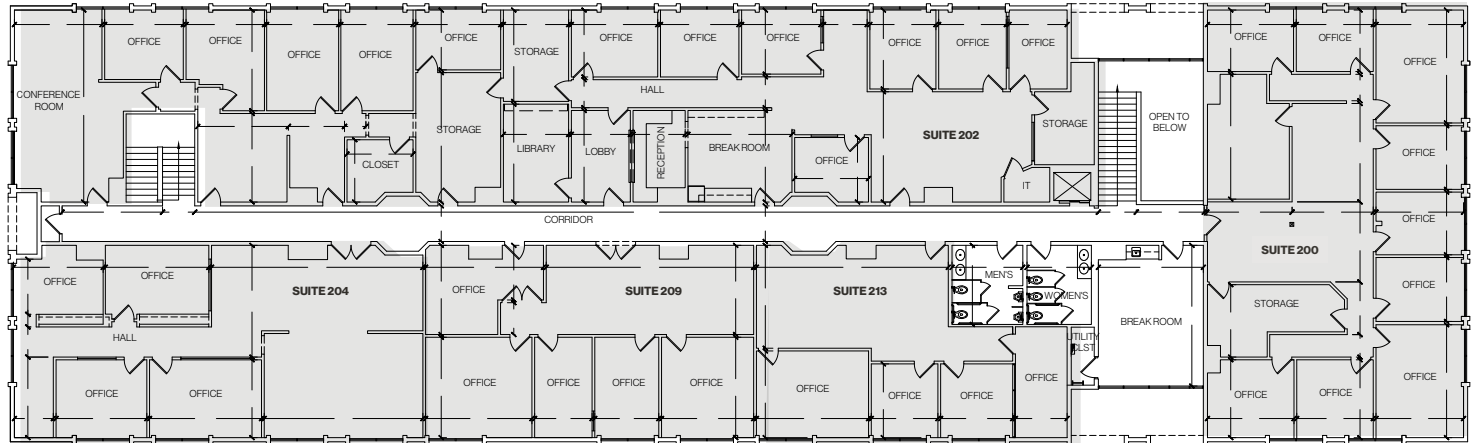


Offices	Square Footage	Lease Rate
A	± 140 SF	\$650
B	± 141 SF	\$650
C	± 135 SF	\$650
D	± 135 SF	\$650
E	-	\$650
F	± 220 SF	\$850
G	± 190 SF	\$750

First Floor

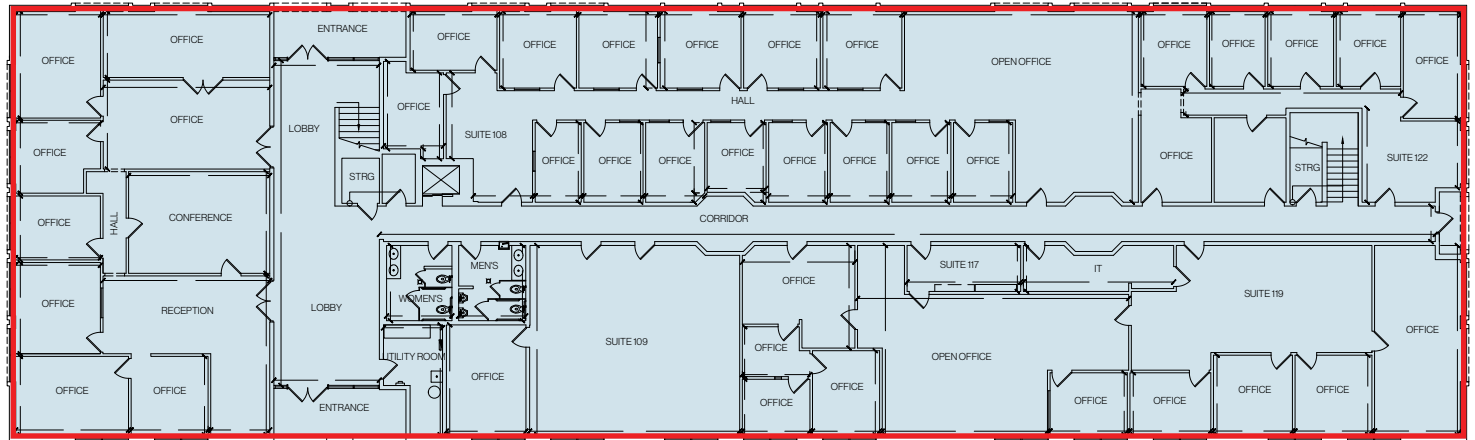


Second Floor

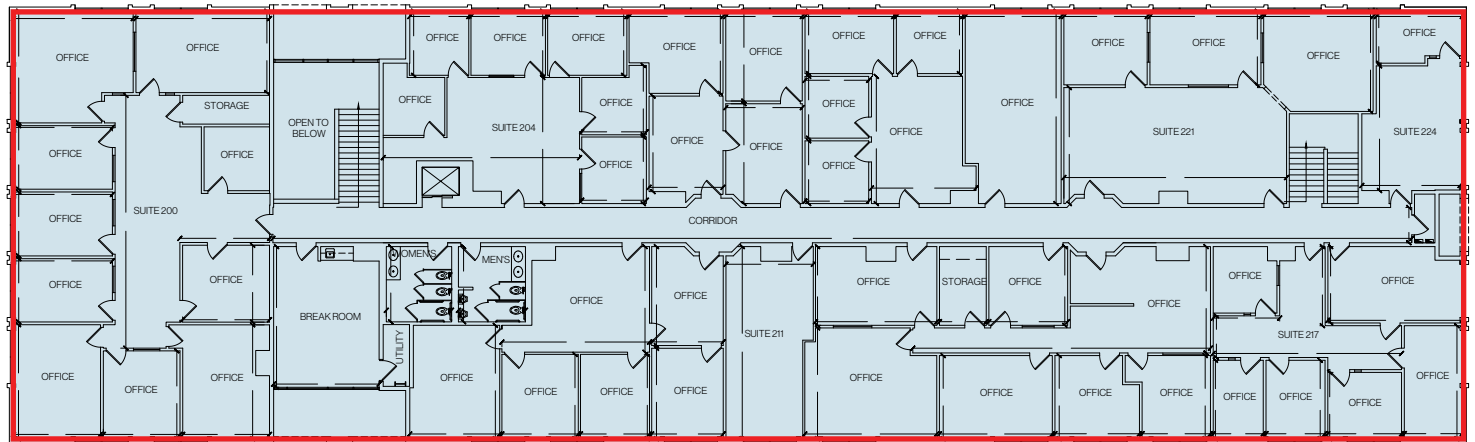


Suite	Square Footage	Suite	Square Footage
101-105	± 1,111 SF	117-119	± 2,628 SF
102	± 1,252 SF	200	± 3,094 SF
110 - 114	± 811 SF	209	± 1,767 SF

First Floor
± 13,580*



Second Floor
± 13,580*



**Can be combined to ± 27,160 SF
or be demised smaller

Property Photos | Spec Suite



Property Photos



LOGIC Commercial Real Estate

Specializing in Brokerage and Receivership Services



Join our email list and
connect with us on LinkedIn

The information herein was obtained from sources deemed reliable; however LOGIC Commercial Real Estate makes no guarantees, warranties or representation as to the completeness or accuracy thereof.

For inquiries please reach out to our team.

Michael Keating, SIOR
Partner
775.386.9727
mkeating@logicCRE.com
S.0174942

Michael Dorn
Vice President
775.453.4436
mdorn@logicCRE.com
S.0189635