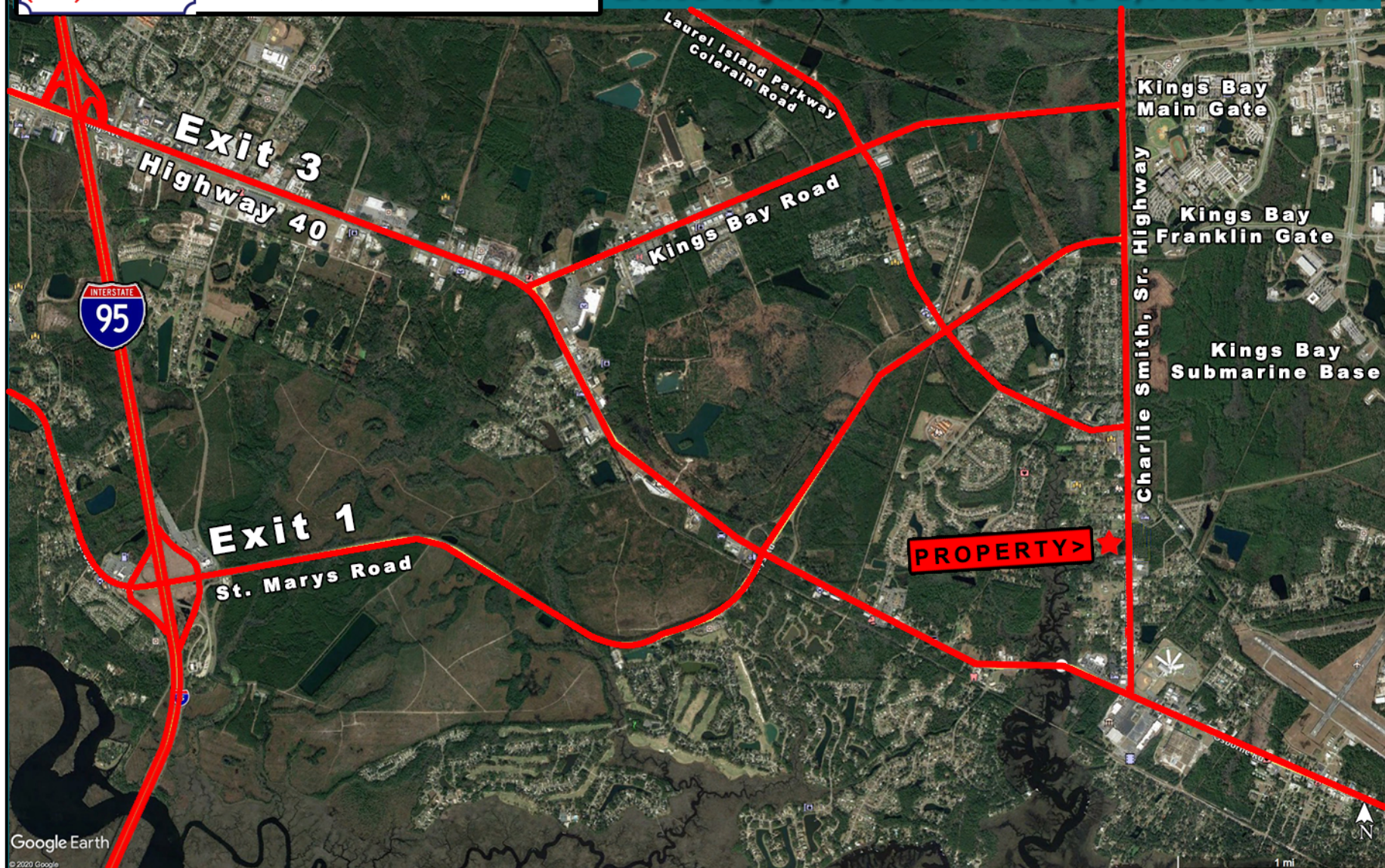


**DON WRIGHT**  
&  
**ASSOCIATES**  
Commercial Real Estate Services  
**(912) 638-4740**

**Fred Freyer**  
Associate Broker  
(912) 230-0539 (cell)  
**fred@fredfreyer.com**  
www.donwrightcommercialrealestate.com

**For Sale 1.653 acre+/-**  
Corner Charlie Smith Highway  
and Palmetto Drive St. Marys, GA  
Zoned Highway Commercial (C-2) Price \$275,000



Google Earth  
© 2020 Google

This information has been obtained from sources deemed to be reliable but Don Wright and Associates makes no representations or warranties, expressed or implied, as to its accuracy. A Purchaser must verify all information and bears all risk for any inaccuracies.

8th St

Palmetto Drive

400'

180'

180'

400'

Charlie Smith, Sr. Highway

**DON WRIGHT**  
&  
**ASSOCIATES**  
Commercial Real Estate Services  
**(912) 638-4740**

**Fred Freyer**  
Associate Broker  
(912) 230-0539 (cell)  
fred@fredfreyer.com  
www.donwrightcommercialrealestate.com

Google Earth

© 2023 Google

100 ft

