

FOR LEASE

50,000± SF OFFICE/WAREHOUSE

9800 I-65 Service Road N. | Creola, AL

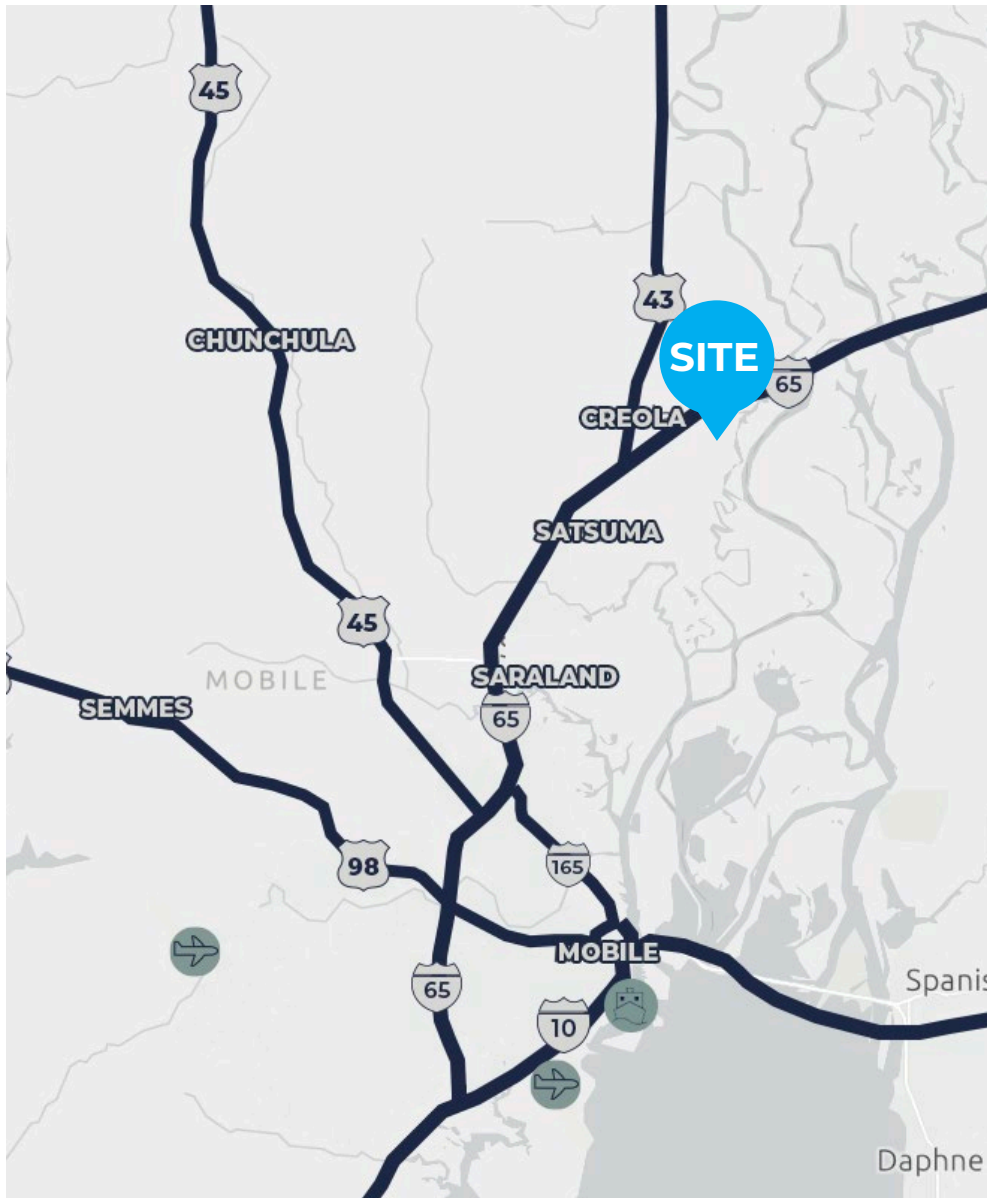


David Dexter

251.379.9446 | ddexter@cre-mobile.com



**CRE
MOBILE**
CRE-MOBILE.COM



PROPERTY DESCRIPTION



SIZE

50,000± SF Warehouse



FRONTAGE

Over 1,000' frontage on I-65 Service Rd



DOORS

9 dock-high doors
2 drive in doors



CEILING HEIGHT

22' Eaves, 25' center



YARD

Abundant yard storage



UTILITIES

All utilities available



LEASE RATE

\$6.00/SF NNN

LOCATION ADVANTAGES



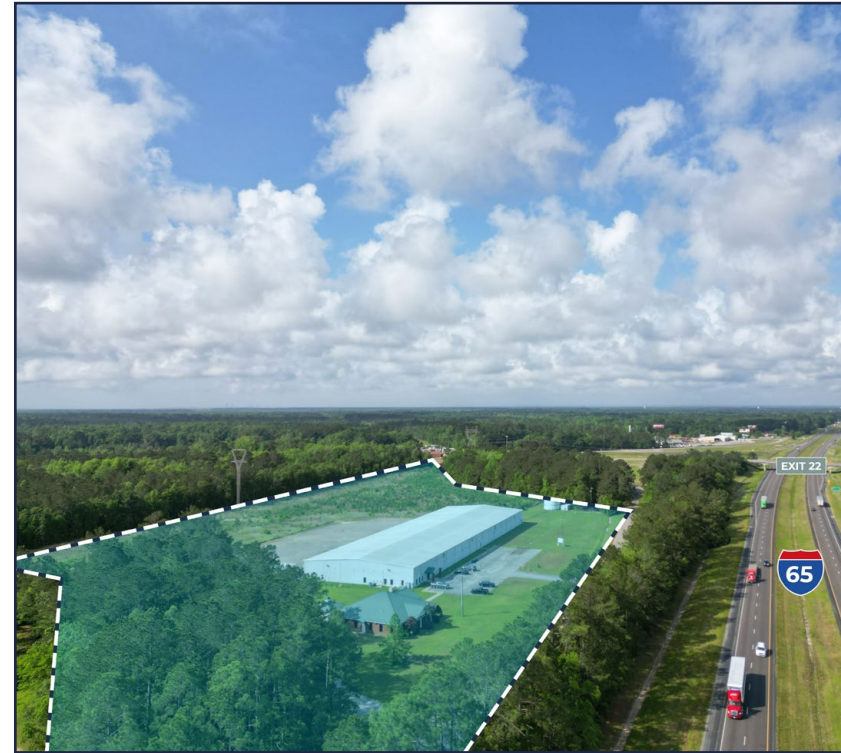
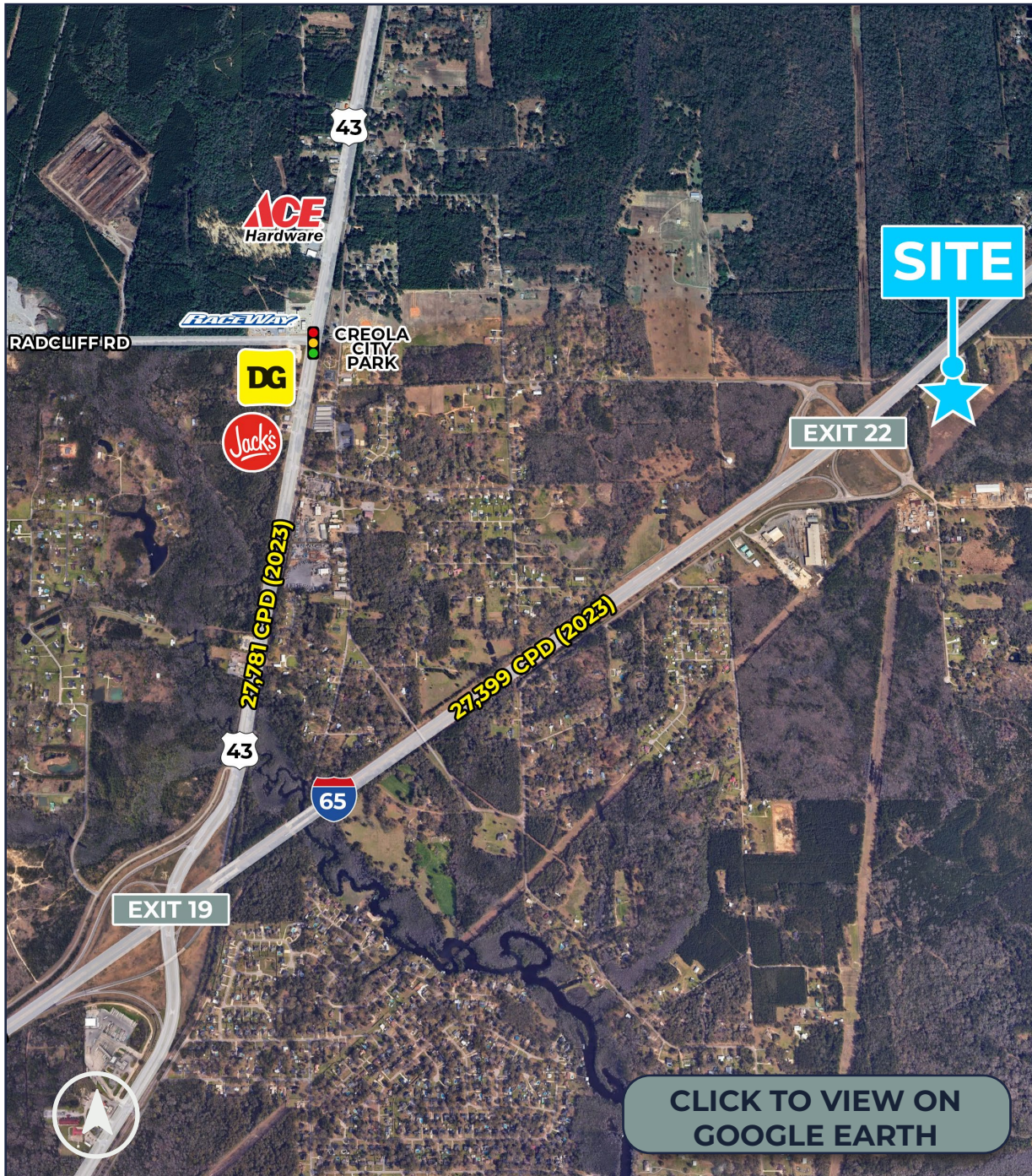
Location

Located 0.5 miles from I-65 via Exit 22.



Proximity to Port

Less than 16 miles from the Port of Mobile.



DISTANCES TO NOTABLE LOCATIONS

I-65	0.5± miles
Hwy 43	2.5± miles
I-165	12± miles
I-10	21.5± miles
Downtown Mobile	17± miles

Distance measured as drive time

NO WARRANTY OR REPRESENTATION, EXPRESS OR IMPLIED, IS MADE AS TO THE ACCURACY OF THE INFORMATION CONTAINED HEREIN, AND THE SAME IS SUBMITTED SUBJECT TO ERRORS, OMISSIONS, CHANGE OF PRICE, RENTAL OR OTHER CONDITIONS, PRIOR SALE, LEASE OR FINANCING, OR WITHDRAWAL WITHOUT NOTICE, AND OF ANY SPECIAL LISTING CONDITIONS IMPOSED BY OUR PRINCIPALS. NO WARRANTIES OR REPRESENTATIONS ARE MADE AS TO THE CONDITION OF THE PROPERTY NOR ANY HAZARDS CONTAINED THEREIN ARE ANY TO BE IMPLIED.



NO WARRANTY OR REPRESENTATION, EXPRESS OR IMPLIED, IS MADE AS TO THE ACCURACY OF THE INFORMATION CONTAINED HEREIN, AND THE SAME IS SUBMITTED SUBJECT TO ERRORS, OMISSIONS, CHANGE OF PRICE, RENTAL OR OTHER CONDITIONS, PRIOR SALE, LEASE OR FINANCING, OR WITHDRAWAL WITHOUT NOTICE, AND OF ANY SPECIAL LISTING CONDITIONS IMPOSED BY OUR PRINCIPALS. NO WARRANTIES OR REPRESENTATIONS ARE MADE AS TO THE CONDITION OF THE PROPERTY NOR ANY HAZARDS CONTAINED THEREIN ARE ANY TO BE IMPLIED.

