

LOCATION

Real Estate Partners, Inc.

Anil Vaswani • AV@LocationREP.com • 404-723-2645

PO Box 13585, Atlanta, GA 30324 • LocationREP.com • 404-875-9552

- Perfectly situated within 1/2 mile of I-20 and 2 miles of I-285 on the west side of Metro Atlanta, 10 miles from Downtown Atlanta, 9 miles from Hartsfield Jackson International Airport.
- Located within the Boulevard Improvement District (<https://boulevardcid.org/about/>), this property is part of one of Metro Atlanta's most robust economic engines.
- The District is the largest concentration of Industrial space along the US's Eastern Seaboard. Its 1000+ businesses employ over 28K people in fields like manufacturing, wholesale, transportation, warehousing, food and beverage with annual payrolls exceeding to \$2.4 billion.
- Recent developments in the surrounding area include UPS's recently completed \$400MM distribution center, Charlie Brown Airport's recently expanded runways to accommodate medium range cargo jets, and multiple infrastructure and development projects spearheaded by the newly formed City of South Fulton. Heavy daytime population with over 28k employees and over 1000 businesses in the Fulton Industrial Corridor District.

4346 FULTON INDUSTRIAL BLVD, ATLANTA GA 30336

Second Generation Restaurant For Lease

2764 SF on .73 acres with drive through opportunity and 40+ parking spaces

Over 43k Vehicles per day on Fulton Industrial Blvd.,

Over 180K vehicles per day on I-20

1/2 mile from I-20 and 2 miles from I-285

**Grease Trap • Walk in Cooler / Freezer • Heavy Power
Water Heater • HVAC • Pylon Signage • ADA Restrooms**



LOCATION

Real Estate Partners, Inc.

Anil Vaswani • AV@LocationREP.com • 404-723-2645

PO Box 13585, Atlanta, GA 30324 • LocationREP.com • 404-875-9552



LOCATION

Real Estate Partners, Inc.

Anil Vaswani • AV@LocationREP.com • 404-723-2645

PO Box 13585, Atlanta, GA 30324 • LocationREP.com • 404-875-9552



LOCATION

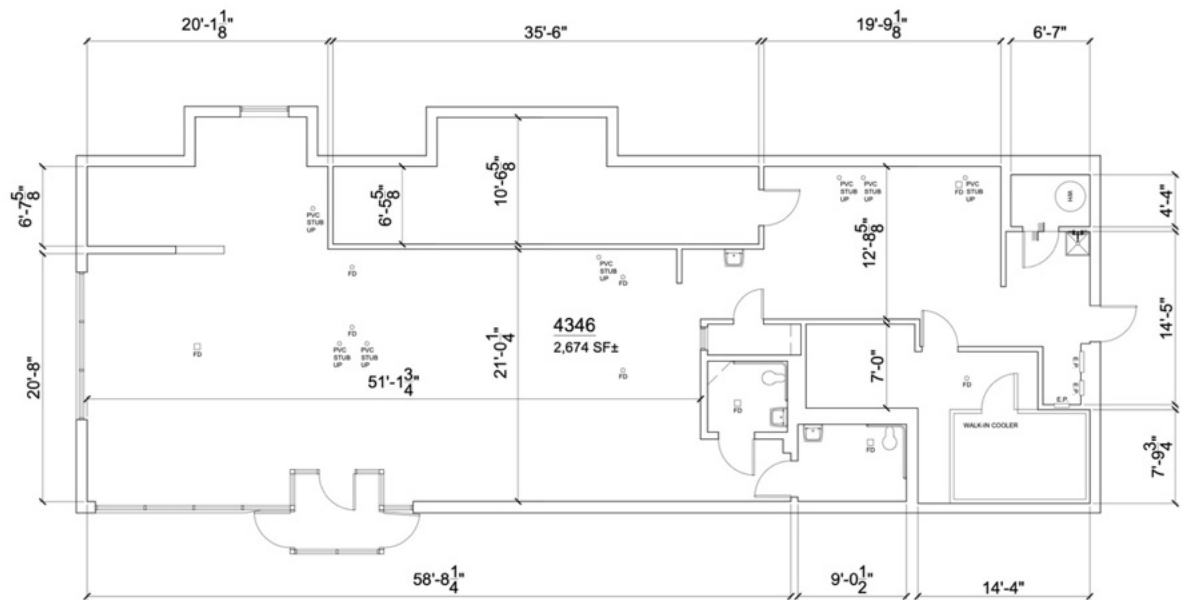
Real Estate Partners, Inc.

Anil Vaswani • AV@LocationREP.com • 404-723-2645

PO Box 13585, Atlanta, GA 30324 • LocationREP.com • 404-875-9552



AS BUILT / DELIVERY PLAN



FLOOR PLAN - AS-BUILT
SCALE: 1/4" = 1'-0"
1
A2.0

ALL Architecture, LLC
2052 CHRYSLER DRIVE NE, ATLANTA, GA 30345
TELEPHONE: (404) 316-2896
E-MAIL: info@allarchllc.com

4346 FULTON INDUSTRIAL BLVD
AS-BUILT
FULTON INDUSTRIAL BLVD SW
ATLANTA, GEORGIA 30336

PRELIMINARY

DESIGNER: JCA
CHECKED: JCA
DATE: 07/18/24

PROJECT TITLE: AS-BUILT FLOOR PLAN

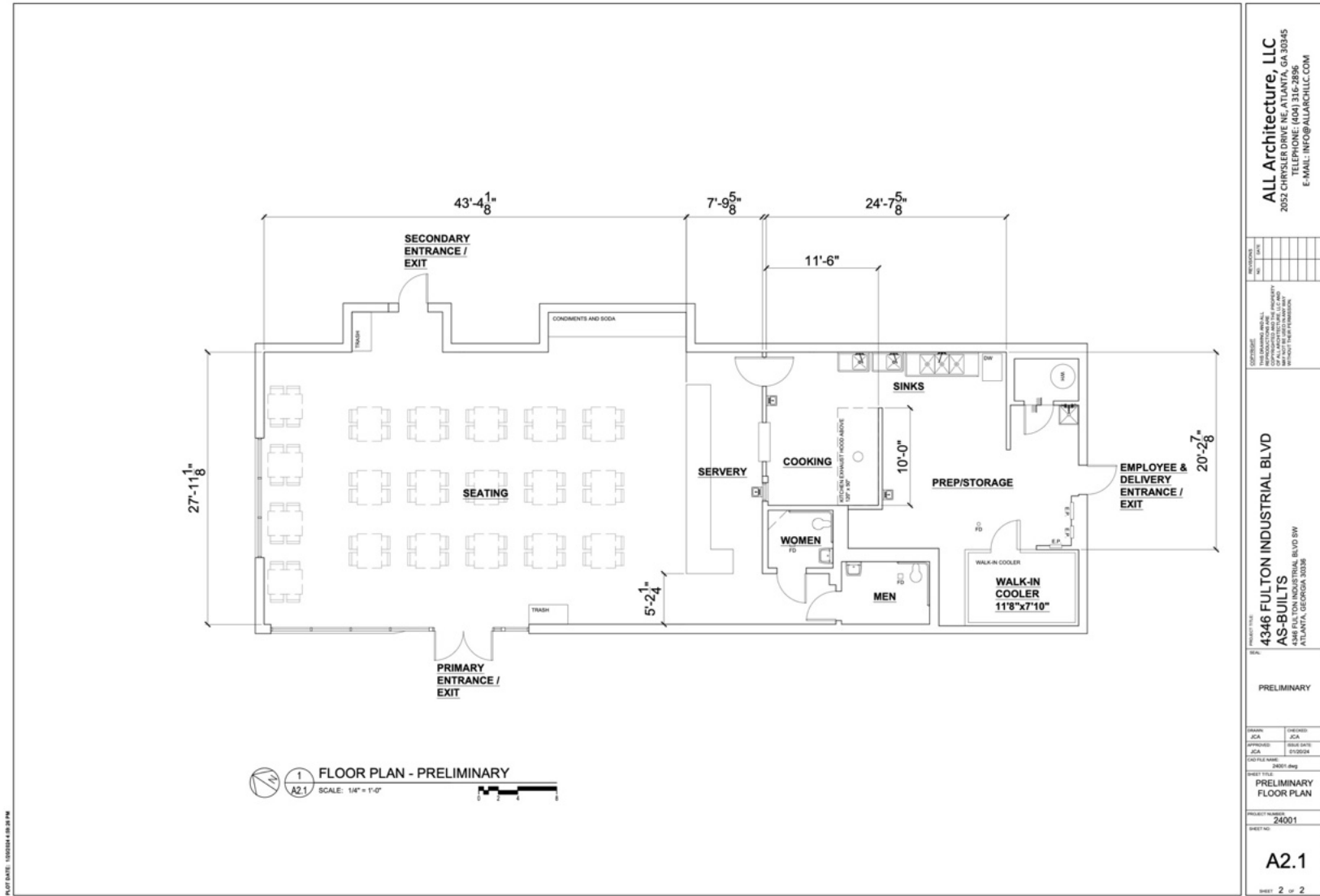
PROJECT NO: 24001

A2.0

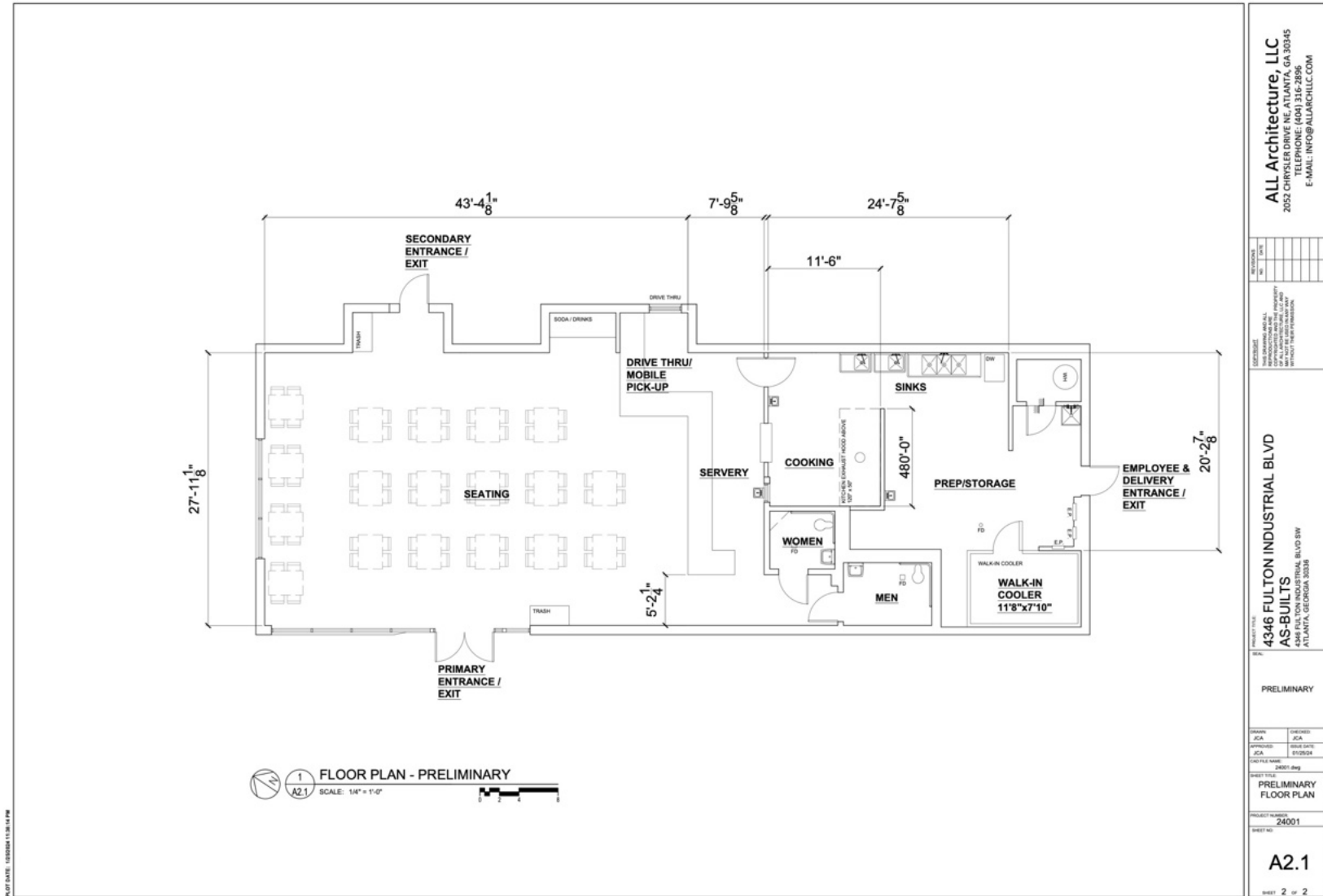
SHEET 1 OF 1

NOT ISSUED FOR CONSTRUCTION

SAMPLE LAYOUT – 76 SEATS



SAMPLE LAYOUT – 72 SEATS & DRIVE THROUGH



CONFIDENTIALITY & DISCLAIMER

All materials and information received or derived from Location Real Estate Partners, Inc. its directors, officers, agents, advisors, affiliates and/or any third party sources are provided without representation or warranty as to completeness, veracity, or accuracy, condition of the property, compliance or lack of compliance with applicable governmental requirements, developability or suitability, financial performance of the property, projected financial performance of the property for any party's intended use or any and all other matters. Neither Location Real Estate Partners, Inc. its directors, officers, agents, advisors, or affiliates makes any representation or warranty, express or implied, as to accuracy or completeness of the any materials or information provided, derived, or received. Materials and information from any source, whether written or verbal, that may be furnished for review are not a substitute for a party's active conduct of its own due diligence to determine these and other matters of significance to such party. Location Real Estate Partners, Inc. will not investigate or verify any such matters or conduct due diligence for a party unless otherwise agreed in writing.

Any party contemplating or under contract or in escrow for a transaction is urged to verify all information and to conduct their own inspections and investigations including through appropriate third-party independent professionals selected by such party. All financial data should be verified by the party including by obtaining and reading applicable documents and reports and consulting appropriate independent professionals. Location Real Estate Partners, Inc. makes no warranties and/or representations regarding the veracity, completeness, or relevance of any financial data or assumptions. Location Real Estate Partners, Inc. does not serve as a financial advisor to any party regarding any proposed transaction. All data and assumptions regarding financial performance, including that used for financial modeling purposes, may differ from actual data or performance. Any estimates of market rents and/or projected rents that may be provided to a party do not necessarily mean that rents can be established at or increased to that level. Parties must evaluate any applicable contractual and governmental limitations as well as market conditions, vacancy factors and other issues in order to determine rents from or for the property. Legal questions should be discussed by the party with an attorney. Tax questions should be discussed by the party with a certified public accountant or tax attorney. Title questions should be discussed by the party with a title officer or attorney. Questions regarding the condition of the property and whether the property complies with applicable governmental requirements should be discussed by the party with appropriate engineers, architects, contractors, other consultants and governmental agencies.

EACH PARTY SHALL CONDUCT ITS OWN INDEPENDENT INVESTIGATION & DUE DILIGENCE.