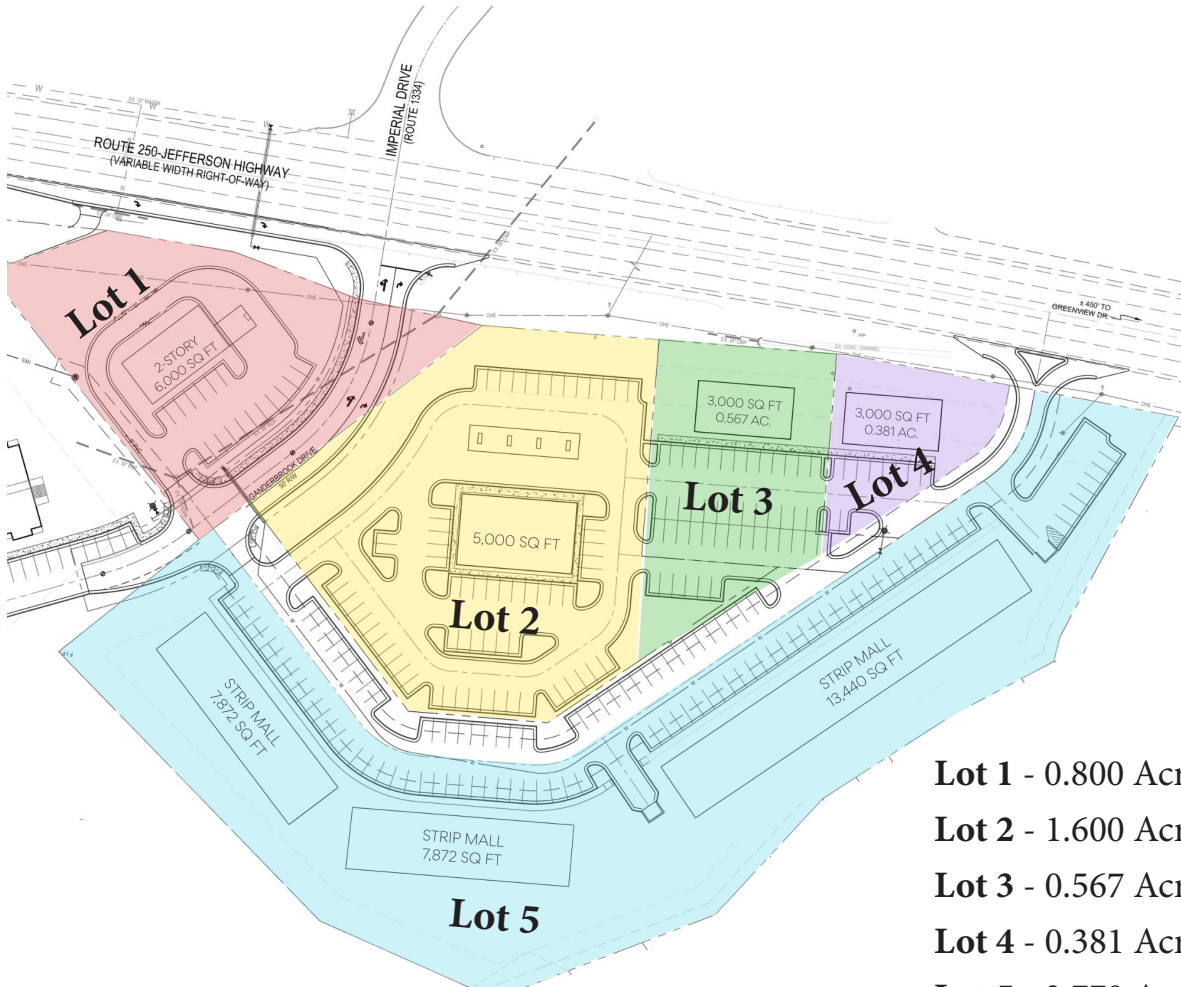


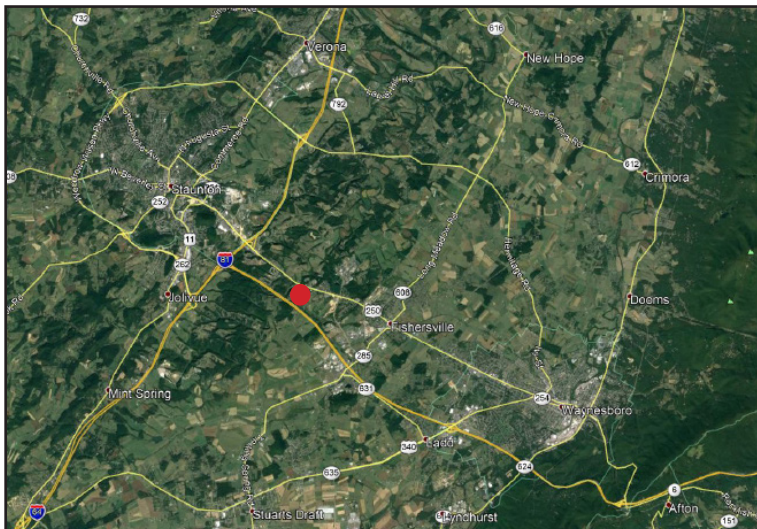
RETAIL LAND

Staunton

Located between Staunton and Fishersville, 2 miles from the regional hospital, I-81, and I-64.



Lot 1 - 0.800 Acres	\$549,900
Lot 2 - 1.600 Acres	\$669,900
Lot 3 - 0.567 Acres	\$499,900
Lot 4 - 0.381 Acres	\$339,900
Lot 5 - 3.770 Acres	\$1,149,900



04/24/2026



28 Imperial Drive, Staunton, VA | (540) 886-6155