



LENOX PARK - SILVER SPRING

1400 EAST WEST HIGHWAY SILVER SPRING, MARYLAND 20910

RETAIL OPPORTUNITIES AVAILABLE
407 RESIDENTIAL UNITS
LOCATED AT THE INTERSECTION OF EAST-WEST HIGHWAY
& COLESVILLE ROAD IN THE HEART OF SILVER SPRING

1,200 SF AVAILABLE

2,000 SF AVAILABLE

1,461 SF AVAILABLE

ACCESS TO PARKING ON SITE

COLESVILLE RD
14,682 ADT

EAST WEST HWY
24,996 ADT

MATT SKALET
mskalet@klnb.com | 202-420-7775

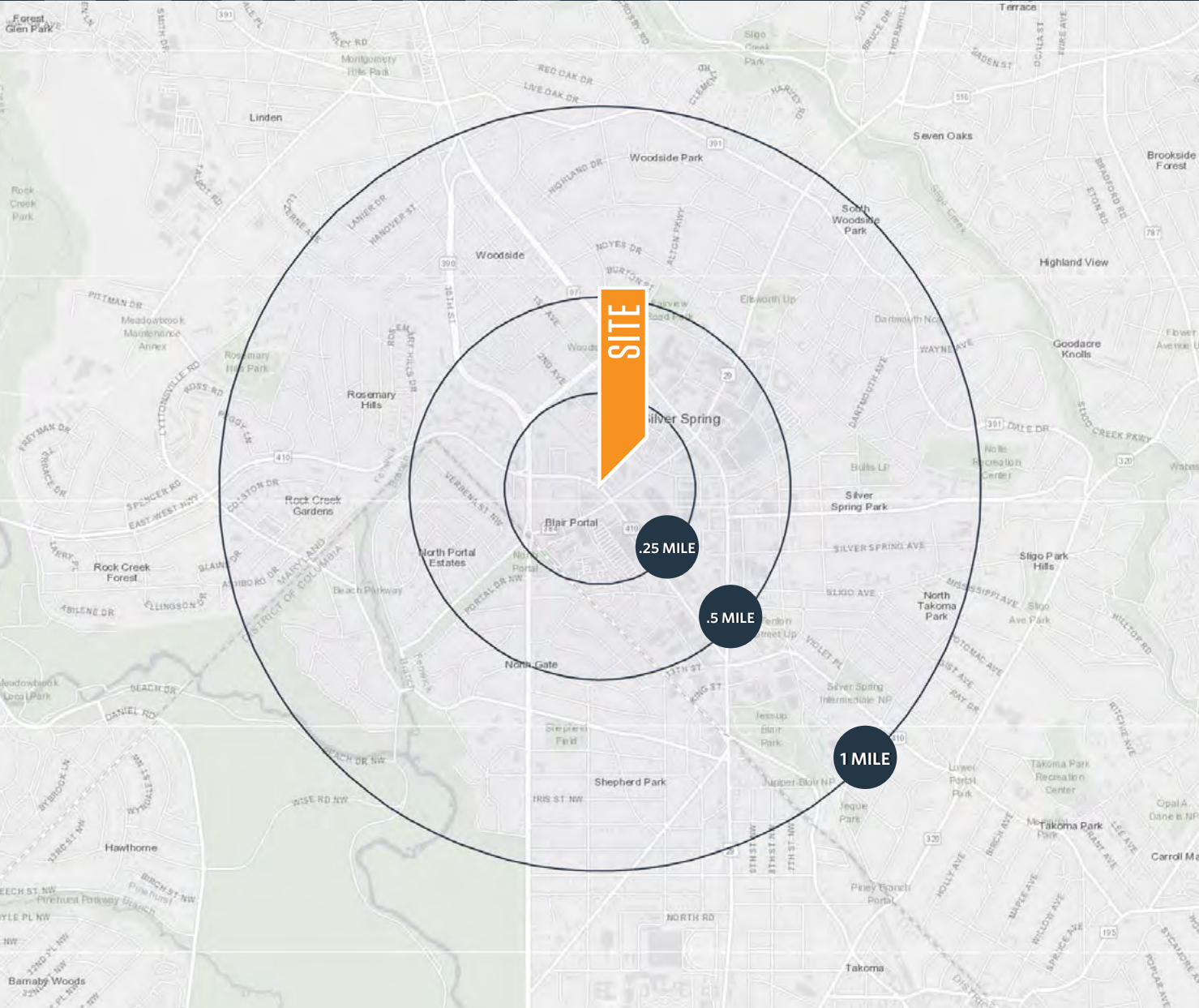
LINDSEY ST. MAXENS
lstmaxens@klnb.com | 202-420-7769

klnb.com

LOCATION

LENOX PARK - SILVER SPRING

1400 EAST WEST HIGHWAY SILVER SPRING, MARYLAND 20910



AVAILABLE SPACE

- 2,000 SF Available Immediately
 - Wide open shell condition
- 1,200 SF Available Immediately
 - Wide open shell condition
- 1,461 SF Available Immediately
 - Former massage therapist office

DEMOGRAPHICS | 2022:

WALK TIME

	5 MIN	10 MIN	0.25-MILE	0.5-MILE	1-MILE
Population	3,366	16,662	6,928	19,182	39,795
Daytime Population	6,710	24,272	9,965	27,758	45,297
Households	1,979	9,597	4,153	11,059	19,736
Average HH Income	\$103,629	\$104,930	\$91,786	\$108,060	\$132,958

TRAFFIC COUNTS | 2021:

Colesville Road	14,682 ADT
East-West Hwy	24,996 ADT
Georgia Ave	35,555 ADT



4,176 ADR

MATT SKALET

mkalet@klnb.com | 202-420-7775

LINDSEY ST. MAXENS

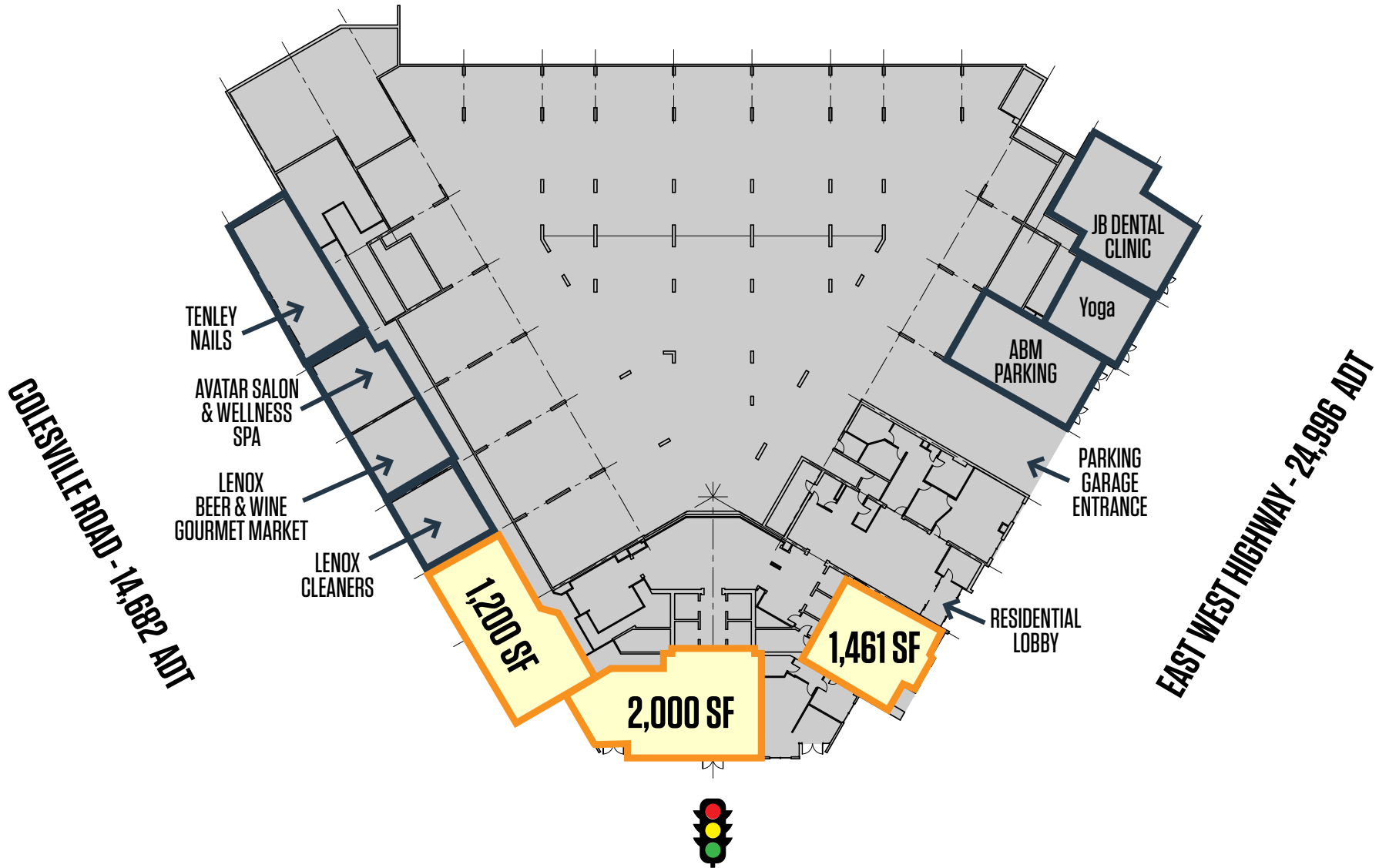
lstmaxens@klnb.com | 202-420-7769



SITE PLAN

LENOX PARK - SILVER SPRING

1400 EAST WEST HIGHWAY SILVER SPRING, MARYLAND 20910



MATT SKALET

maskalet@klnb.com | 202-420-7775

LINDSEY ST. MAXENS

lstmaxens@klnb.com | 202-420-7769



PHOTOS

LENOX PARK - SILVER SPRING

1400 EAST WEST HIGHWAY SILVER SPRING, MARYLAND 20910

2,000 SF AVAILABLE

RETAIL FOR LEASE 202-375-7500

LENOX PARK

THRIVE CENTER

LENOX PARK APARTMENTS

MATT SKALET

maskalet@klnb.com | 202-420-7775

LINDSEY ST. MAXENS

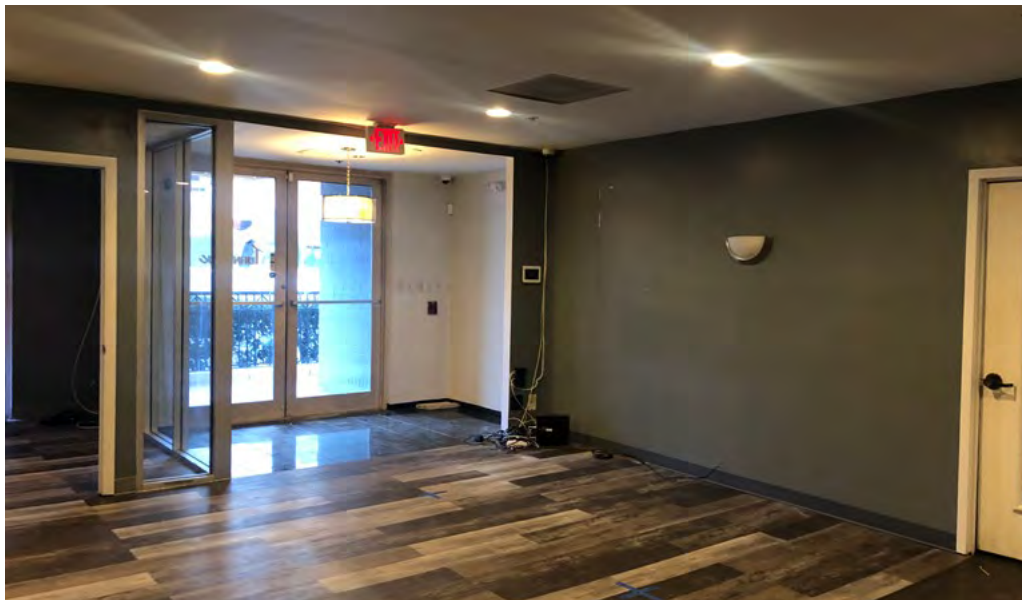
lstmaxens@klnb.com | 202-420-7769



PHOTOS

LENOX PARK - SILVER SPRING

1400 EAST WEST HIGHWAY SILVER SPRING, MARYLAND 20910



MATT SKALET

maskalet@klnb.com | 202-420-7775

LINDSEY ST. MAXENS

lstmaxens@klnb.com | 202-420-7769

klnb

AERIAL

LENOX PARK - SILVER SPRING

1400 EAST WEST HIGHWAY SILVER SPRING, MARYLAND 20910



MATT SKALET
mskalet@klnb.com | 202-420-7775

LINDSEY ST. MAXENS
lstmaxens@klnb.com | 202-420-7769







LENOX PARK - SILVER SPRING

1400 EAST WEST HIGHWAY SILVER SPRING, MARYLAND 20910

FOR MORE INFORMATION, PLEASE CONTACT:

MATT SKALET

mkalet@klnb.com
202-420-7775

LINDSEY ST. MAXENS

lstmaxens@klnb.com
202-420-7769

1130 Connecticut Avenue, Suite 600, Washington, DC 20036

.....

klnb.com

 facebook.com/KLNB

 [@KLNBLLC](https://twitter.com/KLNBLLC)

 linkedin.com/company/klnb

 instagram.com/klnbllc

CLICK TO VIEW PROPERTY WEBSITE

While we have no reason to doubt the accuracy of any of the information supplied, we cannot, and do not, guarantee its accuracy. All information should be independently verified prior to a purchase or lease of the property. We are not responsible for errors, omissions, misuse, or misinterpretation of information contained herein and make no warranty of any kind, express or implied, with respect to the property or any other matters.