



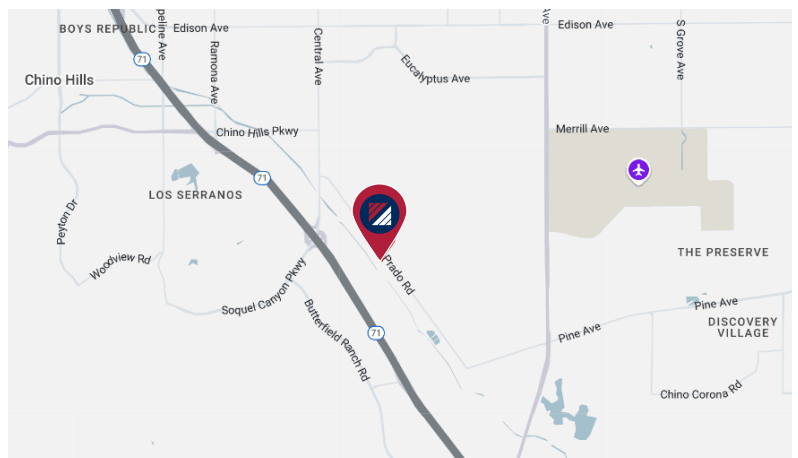
FOR SUBLEASE

12,371 SF INDUSTRIAL SPACE

15870 EL PRADO RD. | UNIT A | CHINO, CA

PROPERTY HIGHLIGHTS:

- ±12,371 SF Industrial Space
- Two Dock High Doors
- One Ground Level Door
- 24' Clear Height
- Racking Can Be Included
- Access to 71 Freeway
- Sublease until November 30, 2025
- Direct Deal Possible



FOR MORE INFORMATION, PLEASE CONTACT:

JOHN HASTINGS

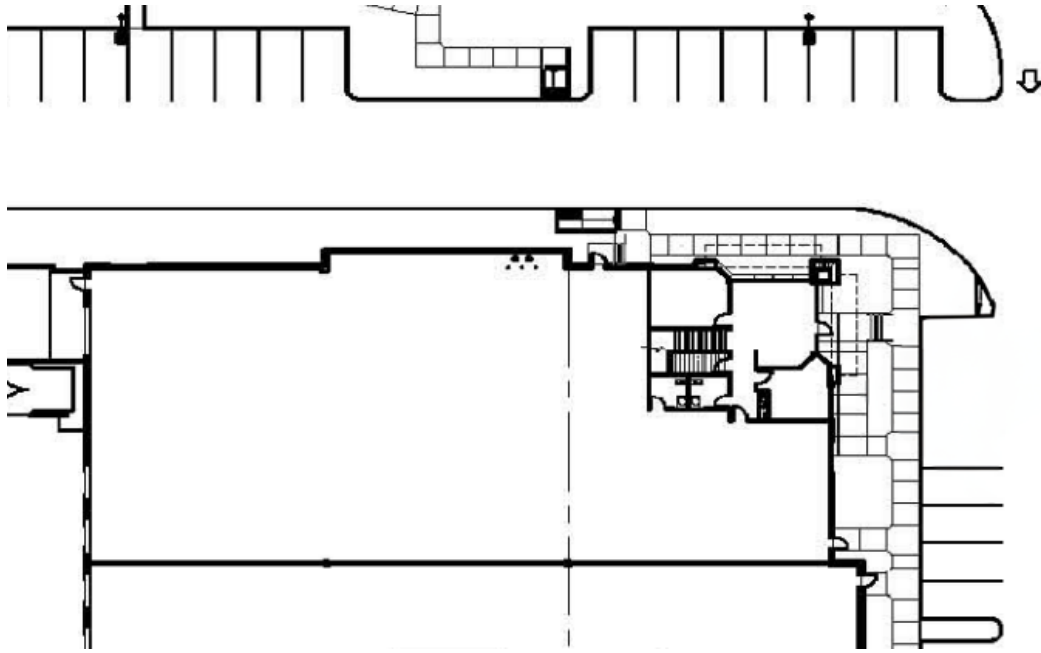
ASSOCIATE
P: 562.908.5115 | M: 760.703.2212
jhastings@daumcommercial.com
CA DRE#: 02145691

JEFF JIANG

ASSOCIATE
P: 562.692.8245 | M: 949.755.9966
jjiang@daumcommercial.com
CA DRE#: 02103623



FLOOR PLAN AND PHOTOS



*ALL MEASUREMENTS ARE APPROXIMATE AND ARE NOT TO SCALE. MEASUREMENTS ARE INTERIOR MEASUREMENTS, FLOOR PLAN DOES NOT SHOW ALL IMPROVEMENTS.



FOR MORE INFORMATION, PLEASE CONTACT:

JOHN HASTINGS

ASSOCIATE

P: 562.908.5115 | M: 760.703.2212

jhastings@daumcommercial.com

CA DRE#: 02145691

JEFF JIANG

ASSOCIATE

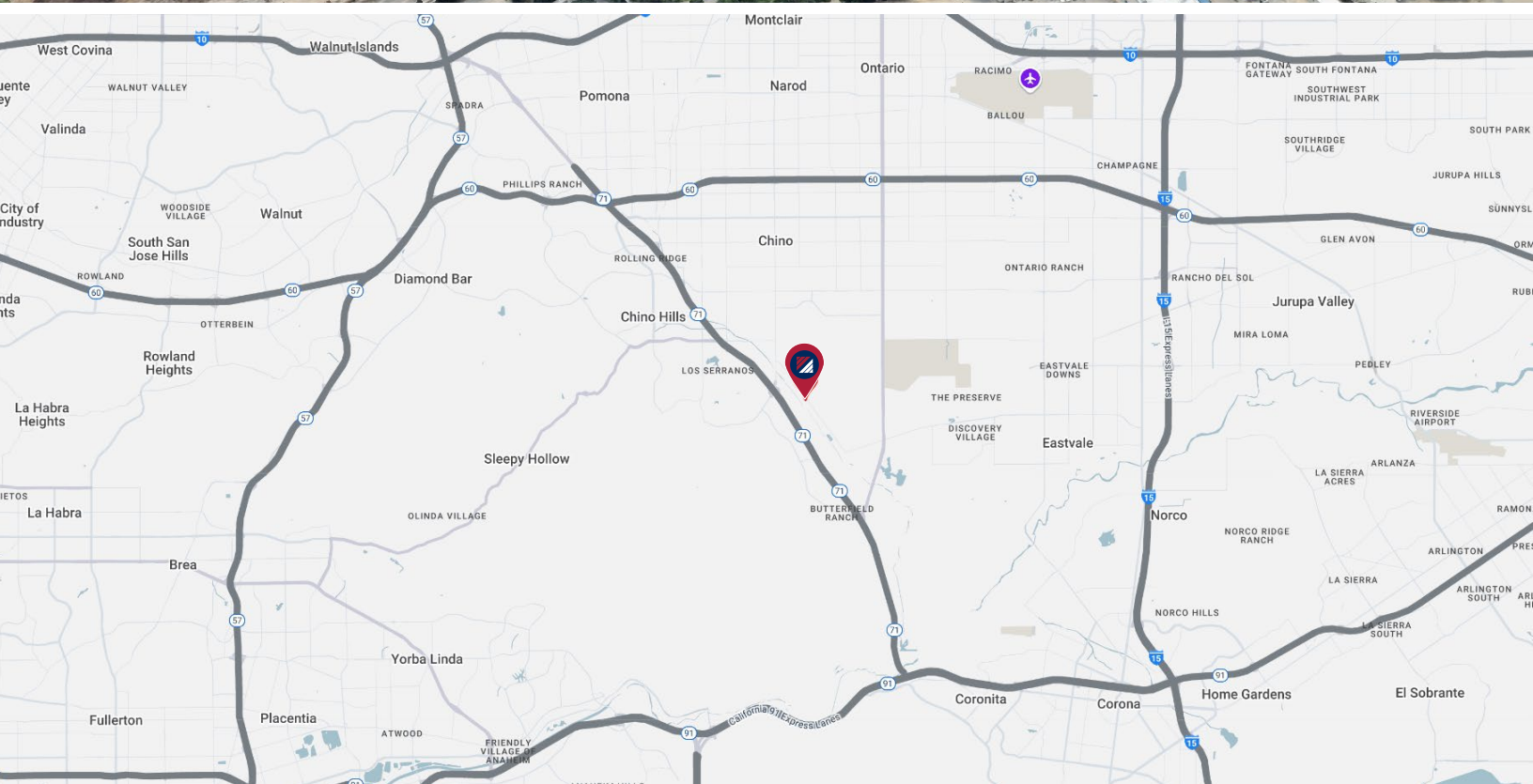
P: 562.692.8245 | M: 949.755.9966

jjiang@daumcommercial.com

CA DRE#: 02103623



AERIAL AND LOCATION MAP



FOR MORE INFORMATION, PLEASE CONTACT:

JOHN HASTINGS

ASSOCIATE

P: 562.908.5115 | M: 760.703.2212

jhastings@daumcommercial.com

CA DRE#: 02145691

JEFF JIANG

ASSOCIATE

P: 562.692.8245 | M: 949.755.9966

jjiang@daumcommercial.com

CA DRE#: 02103623

