



GROUND MATRIX



FOR LEASE

# CREATIVE OFFICE

at

# 972

MISSION STREET

San Francisco, CA 94103



Presented By:

**Jerry Adamson**

707.570.7802

[jerry@groundmatrix.com](mailto:jerry@groundmatrix.com)

CalDRE #01935945



972

TOP FLOOR CREATIVE OFFICE

**MISSION STREET**

San Francisco, CA 94103



GROUND MATRIX

FOR LEASE | OFFICE SPACE

Property Summary



## PROPERTY DESCRIPTION

972 Mission is a five floor office, retail and flex building that attracts many types of Tenants. Each floor is highly creative with original wood floors, exposed concrete and natural light that flows in through the large windows. The entire Fifth Floor totals +/- 11,000 square feet and is available immediately.

## LOCATION DESCRIPTION

The property is centrally located in the South of Market District. The building is in close proximity of many great restaurants, the Westfield Shopping Mall, Union Square, Market Street and public transportation. BART and the Fifth & Mission garage are only one block away.

### Jerry Adamson

707.570.7802

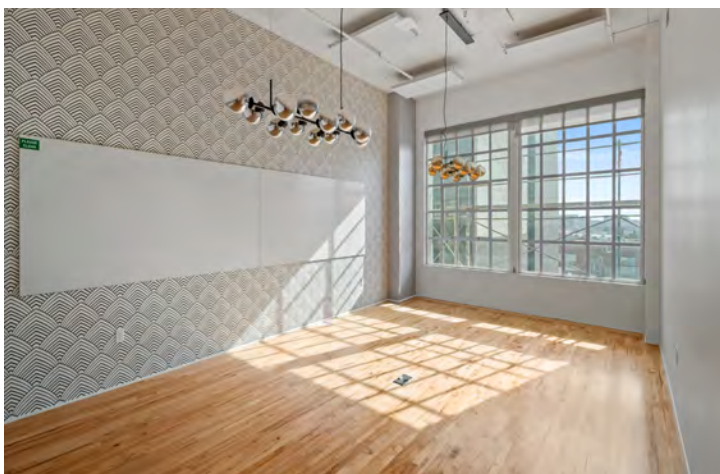
jerry@groundmatrix.com

CalDRE #01935945

## OFFERING SUMMARY

Availability:	Immediate
5th Floor SQFT:	+/- 11,000 RSF
Lease Rate:	\$22/RSF/YEAR
Lease Type:	Industrial Gross

FOR LEASE | OFFICE SPACE

**Jerry Adamson**707.570.7802  
jerry@groundmatrix.com  
CalDRE #01935945**SPACE DESCRIPTION**

Experience the ultimate creative workspace on the fully built-out fifth floor, designed in 2018 to inspire productivity and collaboration. The suite features original, beautifully refinished floors, high ceilings, and expansive windows that flood the space with natural light. Multiple exterior conference rooms offer private breakout areas for teams, while the spacious open kitchen provides a perfect spot for coffee, lunch, and informal meetings.

Enjoy competitive leasing rates and professional property management that accommodates your business needs, whether short, medium, or long term.

**FIFTH FLOOR HIGHLIGHTS**

- Highly creative tech/professional office space
- High ceilings with concrete structure
- Beautiful wood floors throughout the entire space
- Tons of natural light
- 4 Small meeting rooms/offices
- 5 Medium size conference rooms
- 1 Large conference room
- 1 All-Hands meeting room
- Open and modern kitchen with two dishwashers
- Bike Parking
- 2 multi-stall mens/womens restrooms, 1 gender-neutral restroom
- Mother's room
- Multiple Storage closets
- Full HVAC



# 972

TOP FLOOR CREATIVE OFFICE  
**MISSION STREET**  
San Francisco, CA 94103



GROUND MATRIX

FOR LEASE | OFFICE SPACE

5th Floor Photos



**Jerry Adamson**

707.570.7802

[jerry@groundmatrix.com](mailto:jerry@groundmatrix.com)

CalDRE #01935945



# 972

TOP FLOOR CREATIVE OFFICE  
**MISSION STREET**  
San Francisco, CA 94103



GROUND MATRIX

FOR LEASE | OFFICE SPACE

5th Floor Photos



**Jerry Adamson**

707.570.7802

[jerry@groundmatrix.com](mailto:jerry@groundmatrix.com)

CalDRE #01935945



# 972

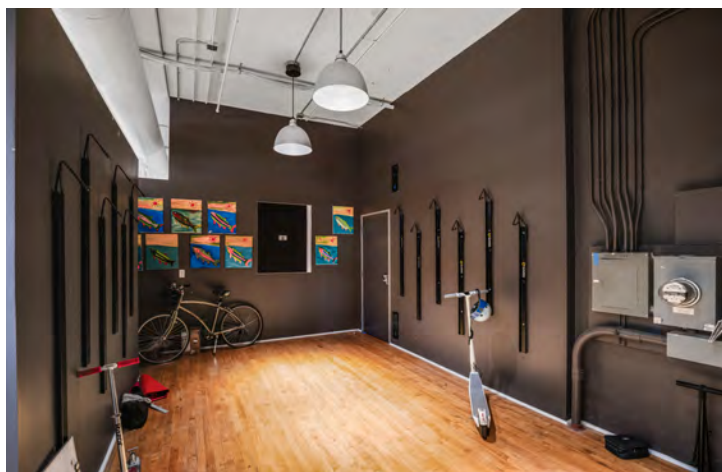
TOP FLOOR CREATIVE OFFICE  
**MISSION STREET**  
San Francisco, CA 94103



GROUND MATRIX

FOR LEASE | OFFICE SPACE

5th Floor Photos



**Jerry Adamson**

707.570.7802

[jerry@groundmatrix.com](mailto:jerry@groundmatrix.com)

CalDRE #01935945

# 972

TOP FLOOR CREATIVE OFFICE  
**MISSION STREET**  
 San Francisco, CA 94103

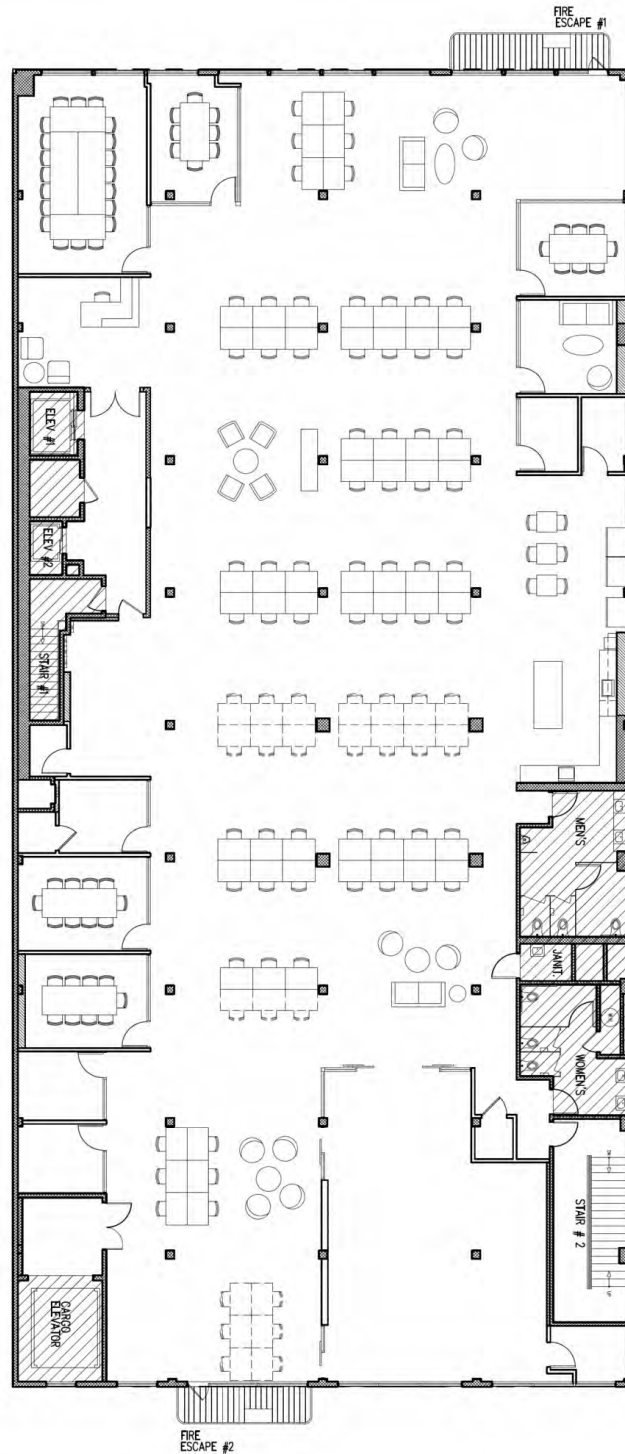


GROUND MATRIX

FOR LEASE | OFFICE SPACE

5th Floor Plans

NOT TO SCALE



**Jerry Adamson**

707.570.7802  
 jerry@groundmatrix.com  
 CalDRE #01935945



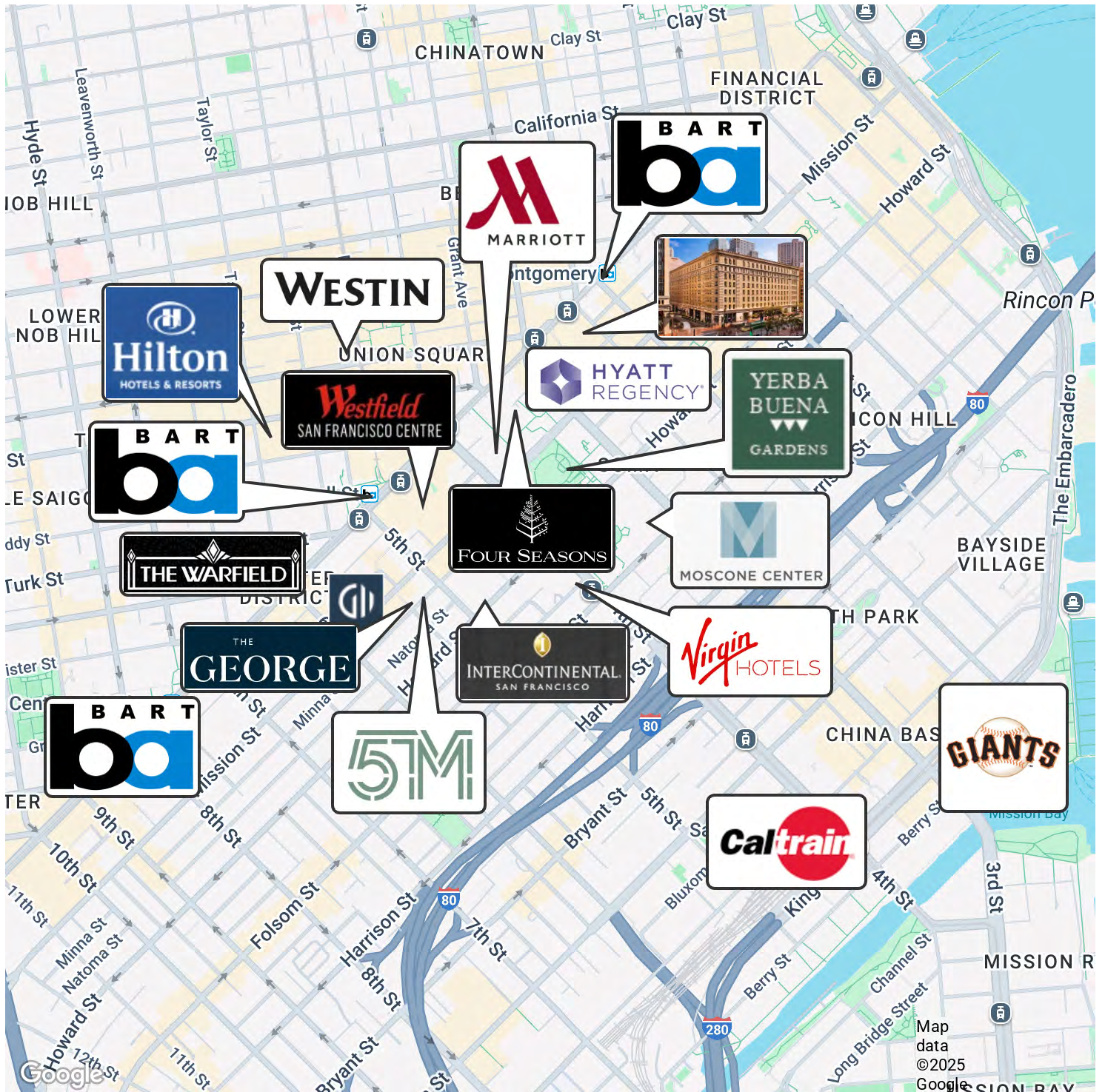
# 972

TOP FLOOR CREATIVE OFFICE  
**MISSION STREET**  
 San Francisco, CA 94103



FOR LEASE | OFFICE SPACE

Hotel And Transit Map



**Jerry Adamson**  
 707.570.7802  
 jerry@groundmatrix.com  
 CalDRE #01935945



# 972

TOP FLOOR CREATIVE OFFICE  
**MISSION STREET**  
 San Francisco, CA 94103



GROUND MATRIX

FOR LEASE | OFFICE SPACE

Bar, Restaurant, Retail Map



**Jerry Adamson**

707.570.7802  
 jerry@groundmatrix.com  
 CalDRE #01935945