



Avison Young - Raleigh-Durham | 5440 Wade Park Boulevard, Suite 200 | Raleigh, NC 27607

FOR LEASE

Arena Centre

1511 Sunday Drive, Raleigh, NC 27607

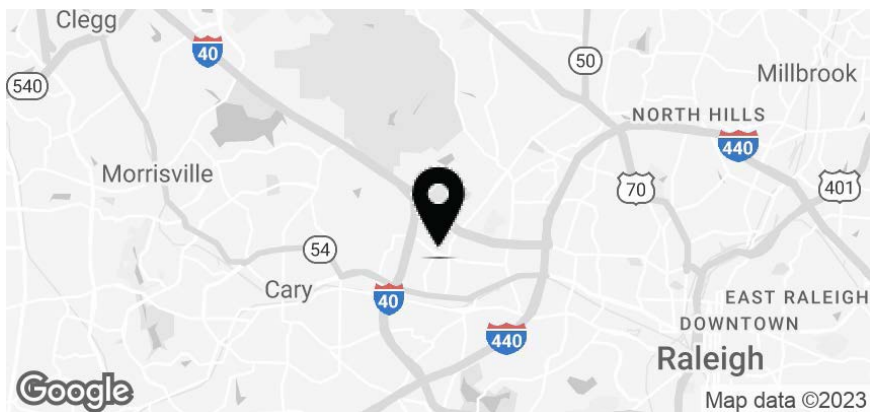
**AVISON
YOUNG**

Property highlights

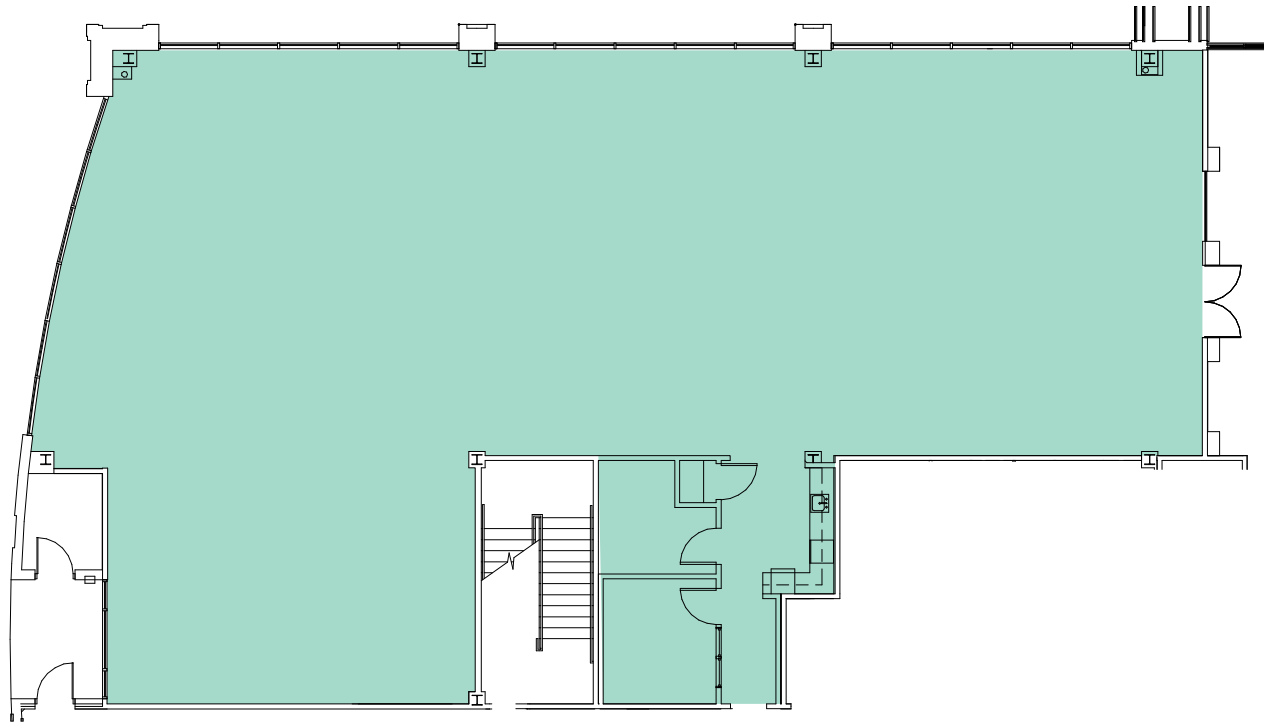
- Class A office building
- Spec suite available March 2025
- Building signage opportunity for larger square foot tenants
- Floor-to-ceiling glass provides abundant natural light
- Professional management and maintenance
- Well-appointed two-story atrium lobby
- Central location with easy access to I-40, I-440 Beltline, I-540, Research Triangle Park, RDU International Airport, and Cary

Offering Summary

Lease Rate:	\$29.50 SF/yr (Full Service)
Building Size:	62,000 SF
Available SF:	4,068 - 10,219 SF

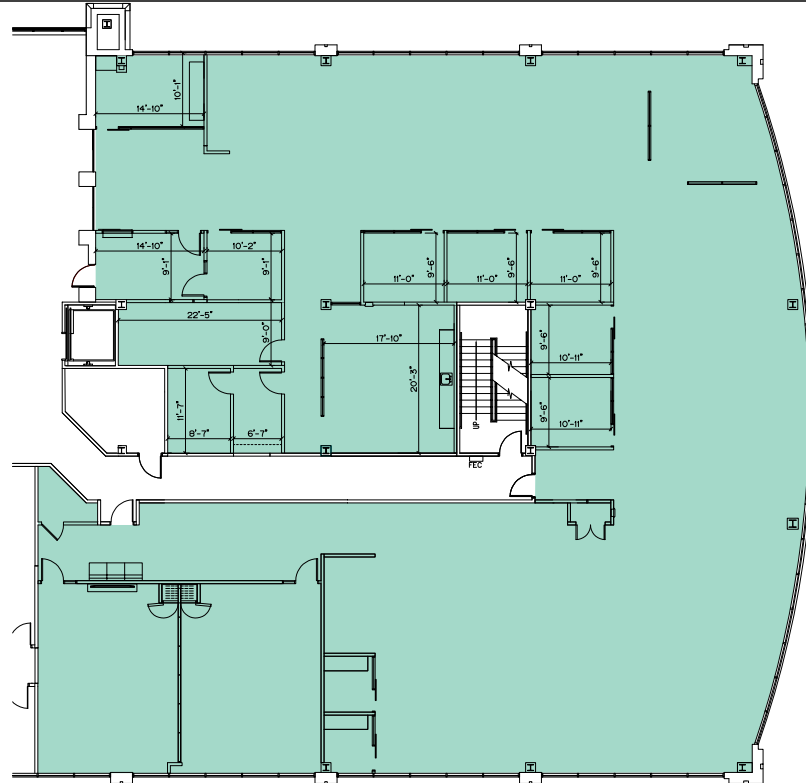


Floor Plans

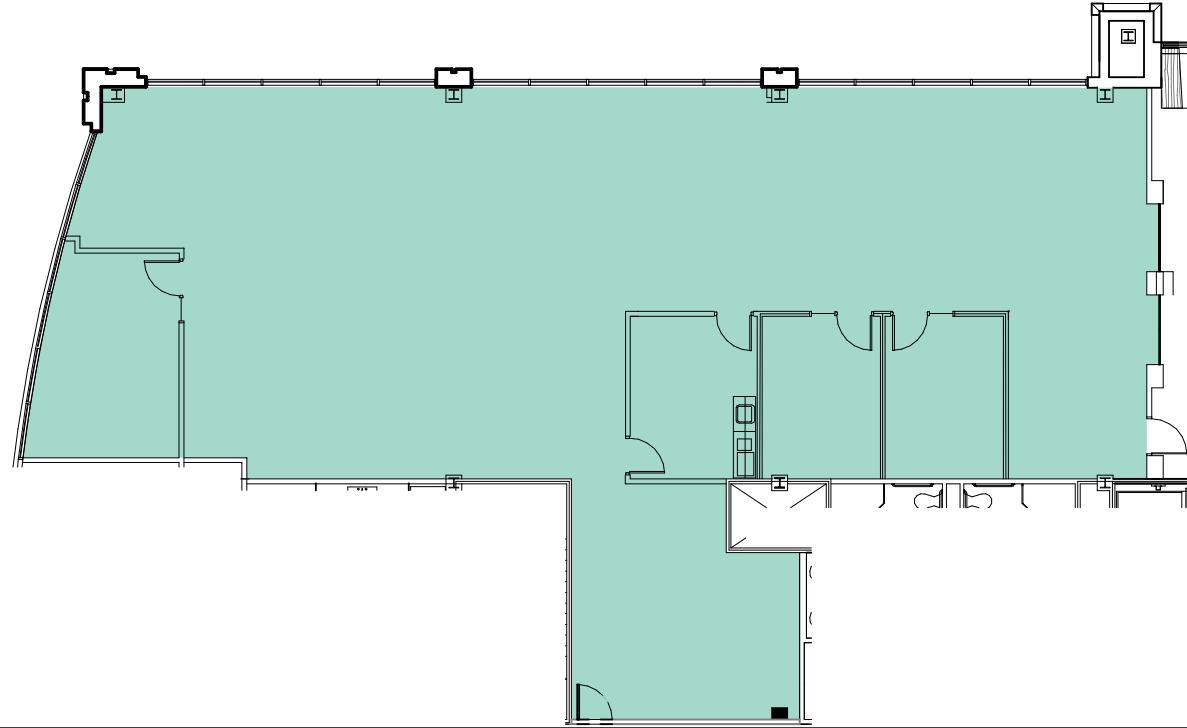


Suite 120 - 4,877 sf

VIRTUAL TOUR - 200

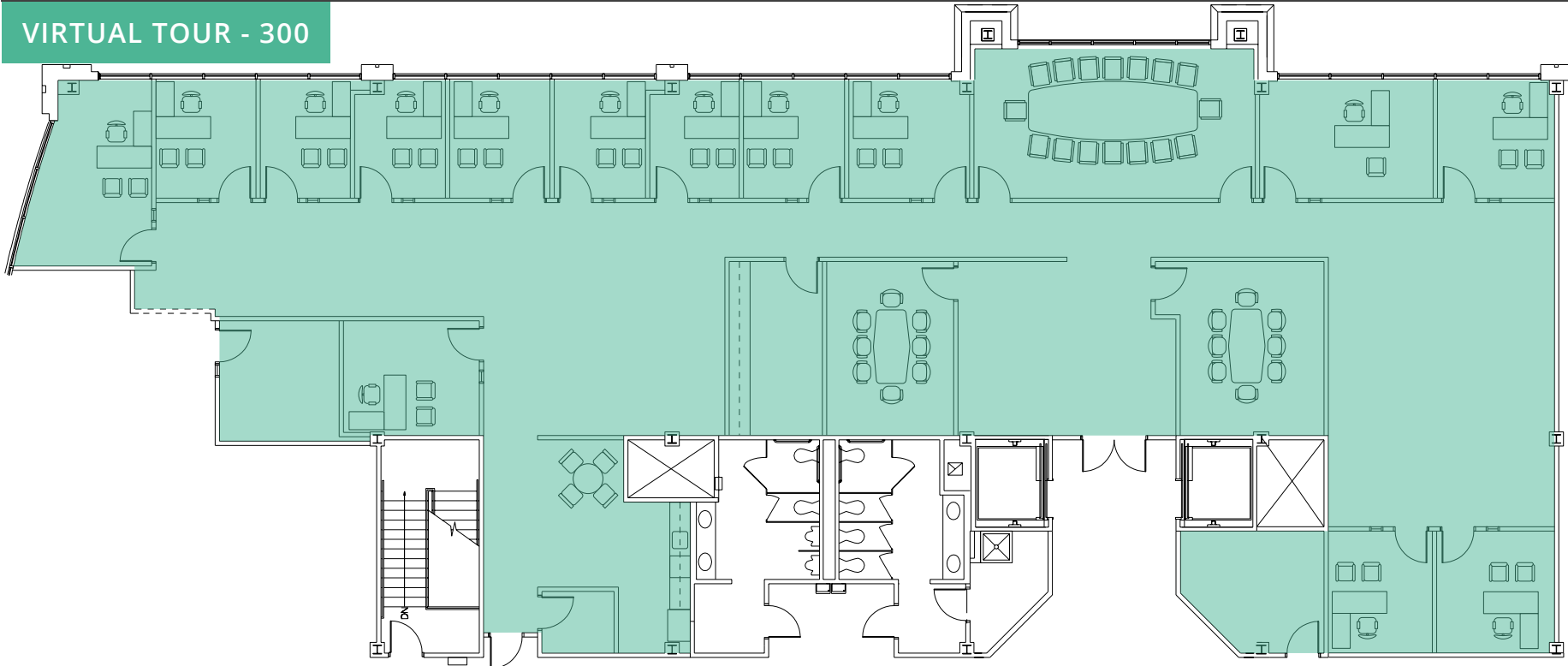


Suite 200 - 10,219 sf



Suite 220 - 4,068 sf (spec suite available March 2025)

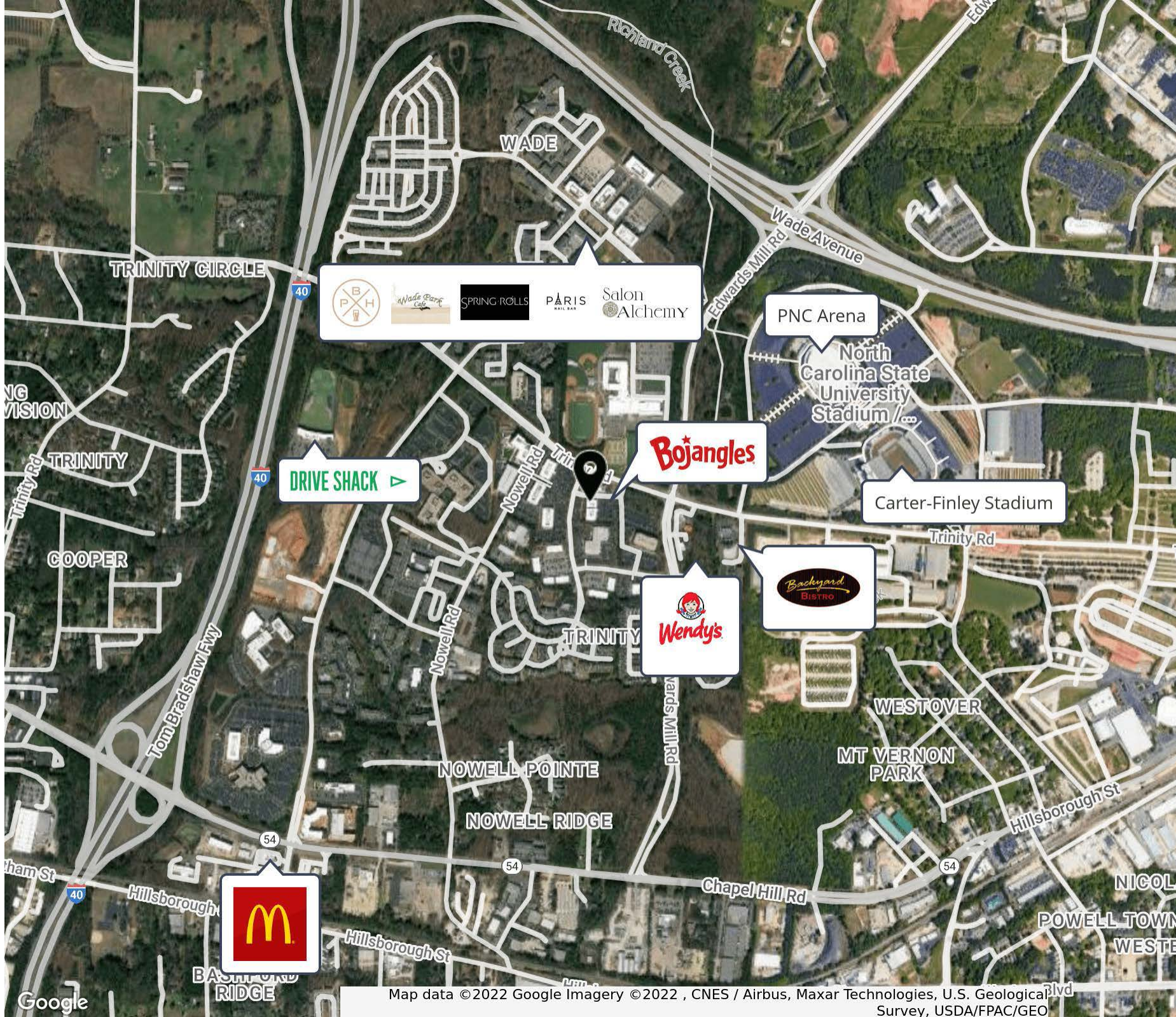
VIRTUAL TOUR - 300



Suite 300 - 6,227 sf

Floor Plans

Retailer map



Let's talk.

Michael Vulpis
Senior Vice President, Office Leasing & Sales
D 919 420 1562
michael.vulpis@avisonyoung.com

Avison Young - Raleigh-Durham
5440 Wade Park Boulevard, Suite 200 | Raleigh, NC 27607

© 2024. Avison Young - Raleigh-Durham. Information contained herein was obtained from sources deemed reliable and, while thought to be correct, have not been verified. Avison Young - Raleigh-Durham does not guarantee the accuracy or completeness of the information presented, nor assumes any responsibility or liability for any errors or omissions therein.

**AVISON
YOUNG**