



## Oakbrook Business Plaza

8404 83rd Ave SW, Lakewood, WA 98498

Two suites available in Oakbrook Business Plaza, located just off Steilacoom Blvd. at 83rd Ave and adjacent from Starbucks. Suite G is an 1,120sf former salon space with an open floor plan, and plenty of plumbing and natural light. Suite E is a desirable retail or office space 1,320sf featuring a spacious reception area, 4 private offices, and a restroom. There is a lighted box on the building fascia for tenant signage, potential for monument signage, and the parking is ample. Join great tenants Weeks Farmers Insurance, Hyper Sonic Games & Toys, Grooming By Lou, Quality Dentistry and more!

### Property Overview

- Mostly open floorplan
- In-suite restroom
- Lighted Box Signage
- Covered Walkways
- Ample Parking
- Suite E: 1,320 SF
- Suite G: 1,120 SF former salon
- Asking Rent: \$14/sf/yr
- \$7.49/sf/yr NNN includes power, water, garbage
- Available March 1, 2026

DISCLAIMER: The above information has been secured from sources believed to be reliable, however, no representations are made to its accuracy. Prospective tenants or buyers should consult their professional advisors and conduct their own independent investigation. Properties are subject to change in price and/or availability without notice.





## FLOOR PLAN - SUITE E



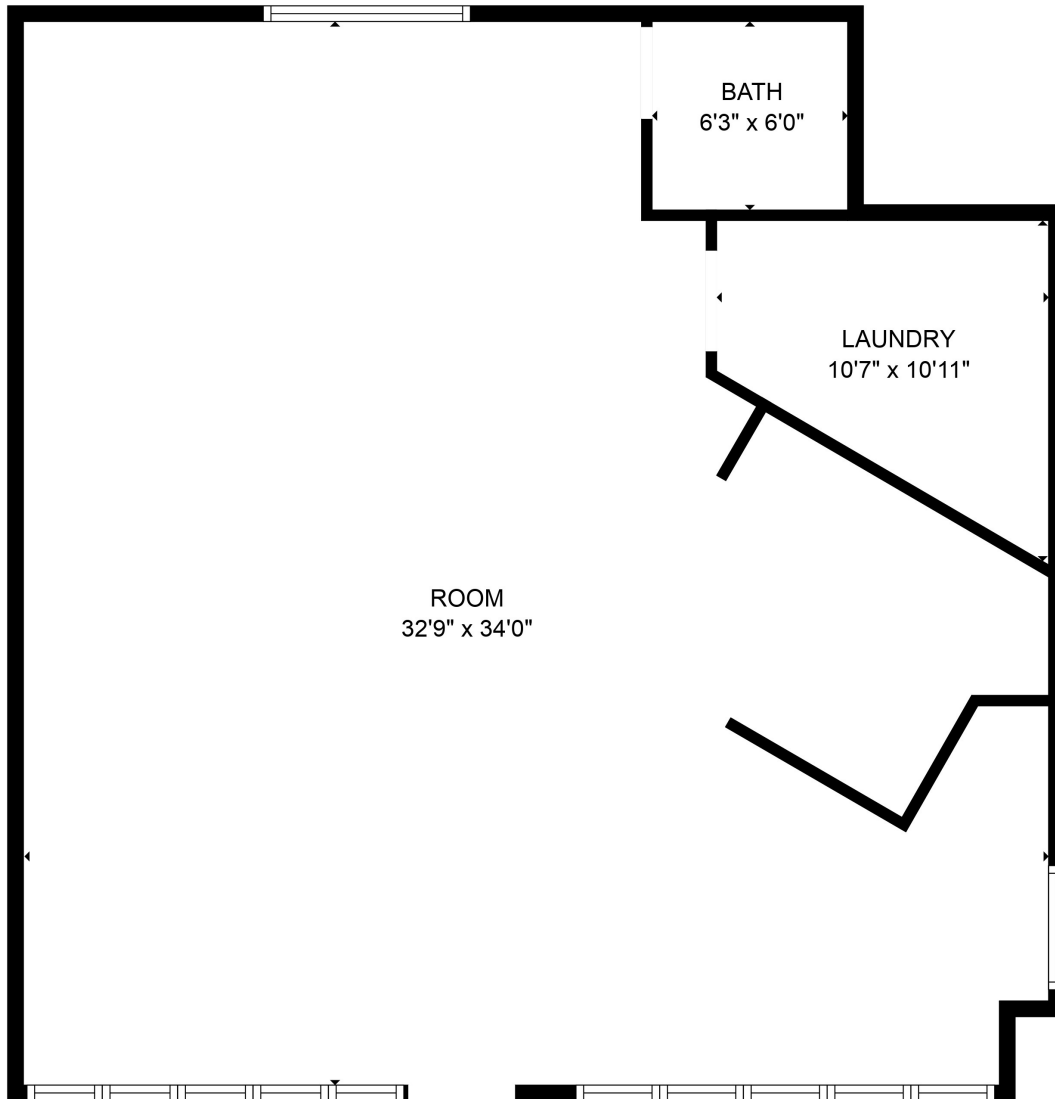
FLOOR PLAN CREATED BY CUBICASA APP. MEASUREMENTS DEEMED HIGHLY RELIABLE BUT NOT GUARANTEED.





# Retail/Office Space Available

## FLOOR PLAN - SUITE G



FLOOR PLAN CREATED BY CUBICASA APP. MEASUREMENTS DEEMED HIGHLY RELIABLE BUT NOT GUARANTEED.





PHOTOS - SUITE E





PHOTOS - SUITE G





AERIAL PHOTO



11120 Gravelly Lake Dr SW Ste 2  
Lakewood, Washington 98499  
johnson-commercial.com

**Margot Johnson**

margot@johnson-commercial.com  
(253) 209-9998