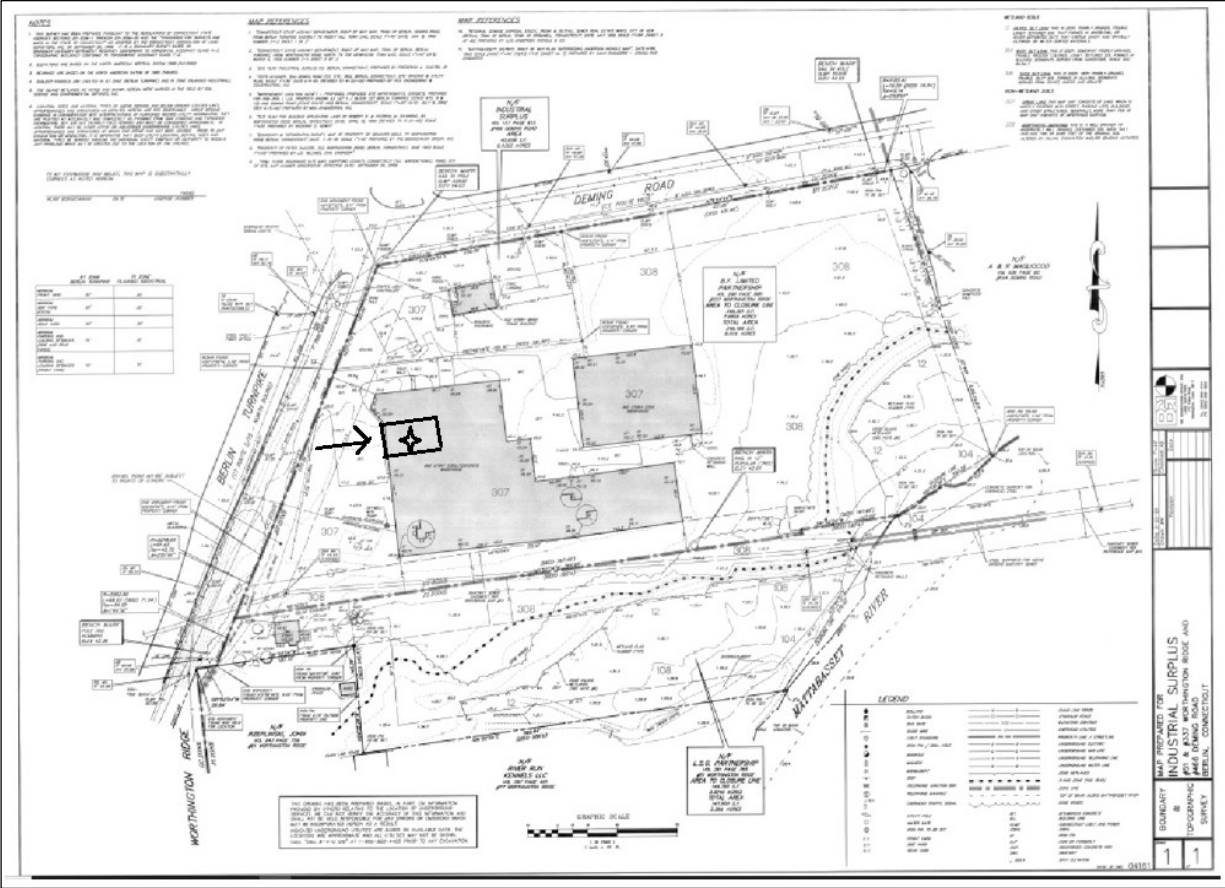
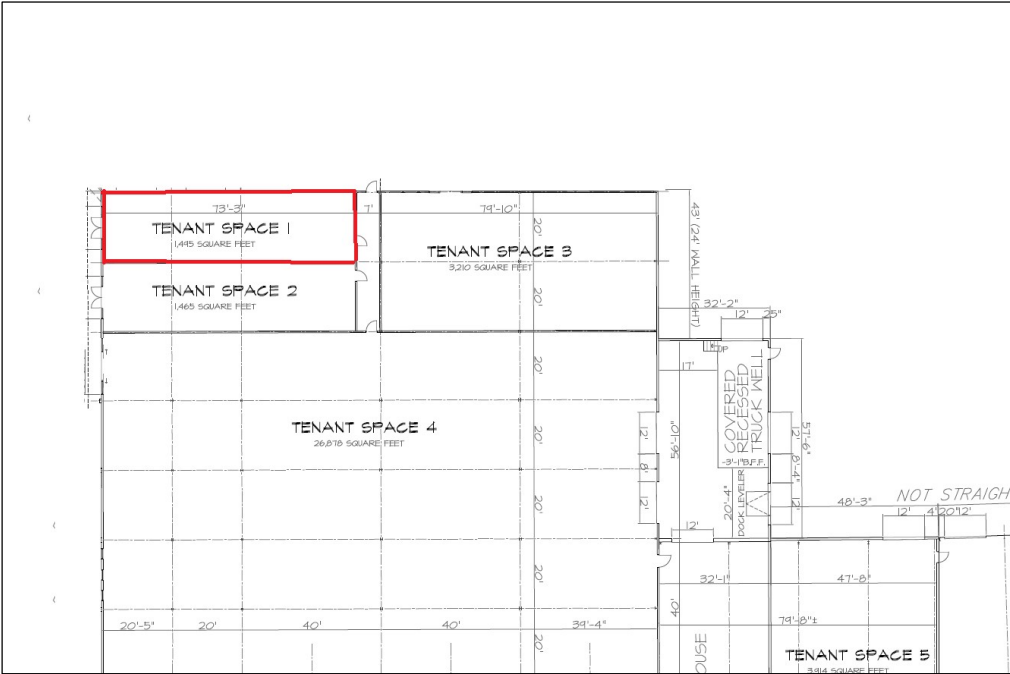


Brief Overview of the Tenant Suites

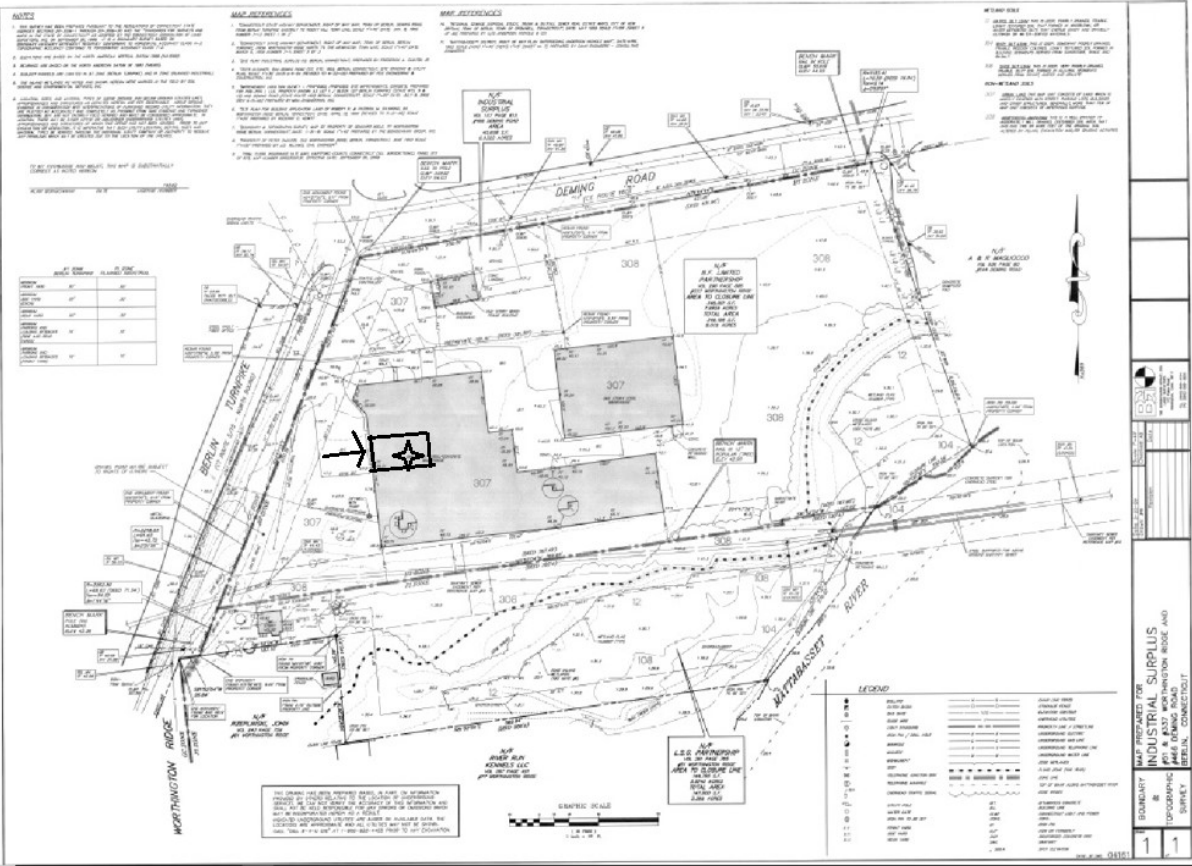
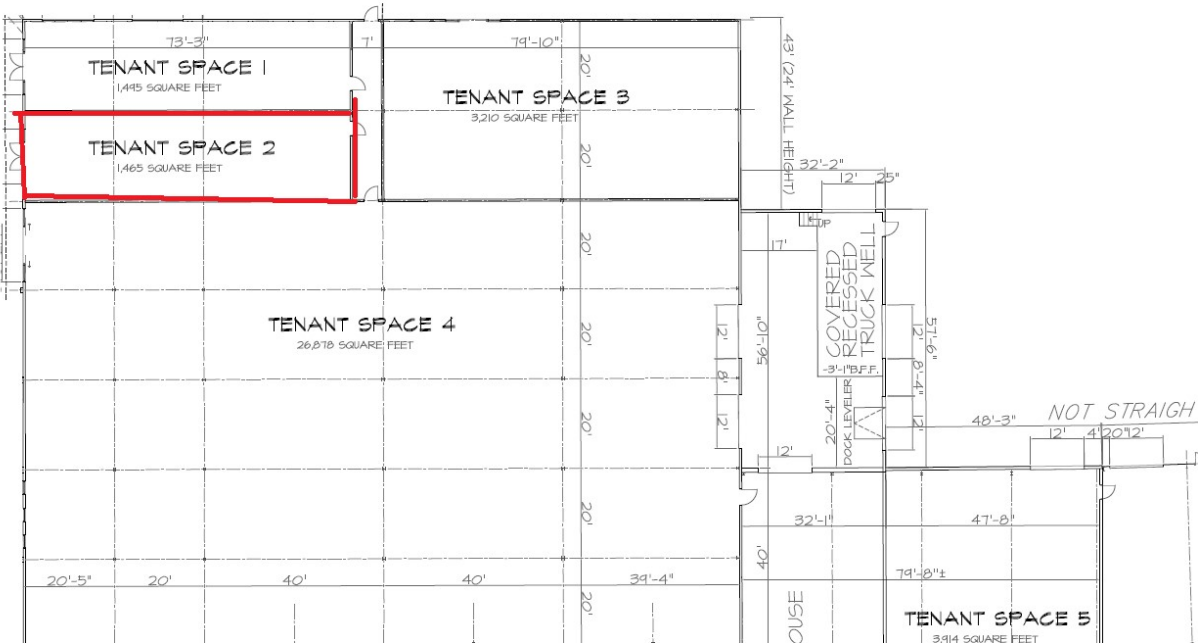


Tenant Space 1 is planned for a 1,495 square foot suite that measures about 20 feet wide with a depth of 73 feet, 3". Access will be from the west side of the building along the Berlin Turnpike and secondary access from a central hall to the northern exterior. The front of the suite will be finished with an anodized aluminum frame and plate glass.



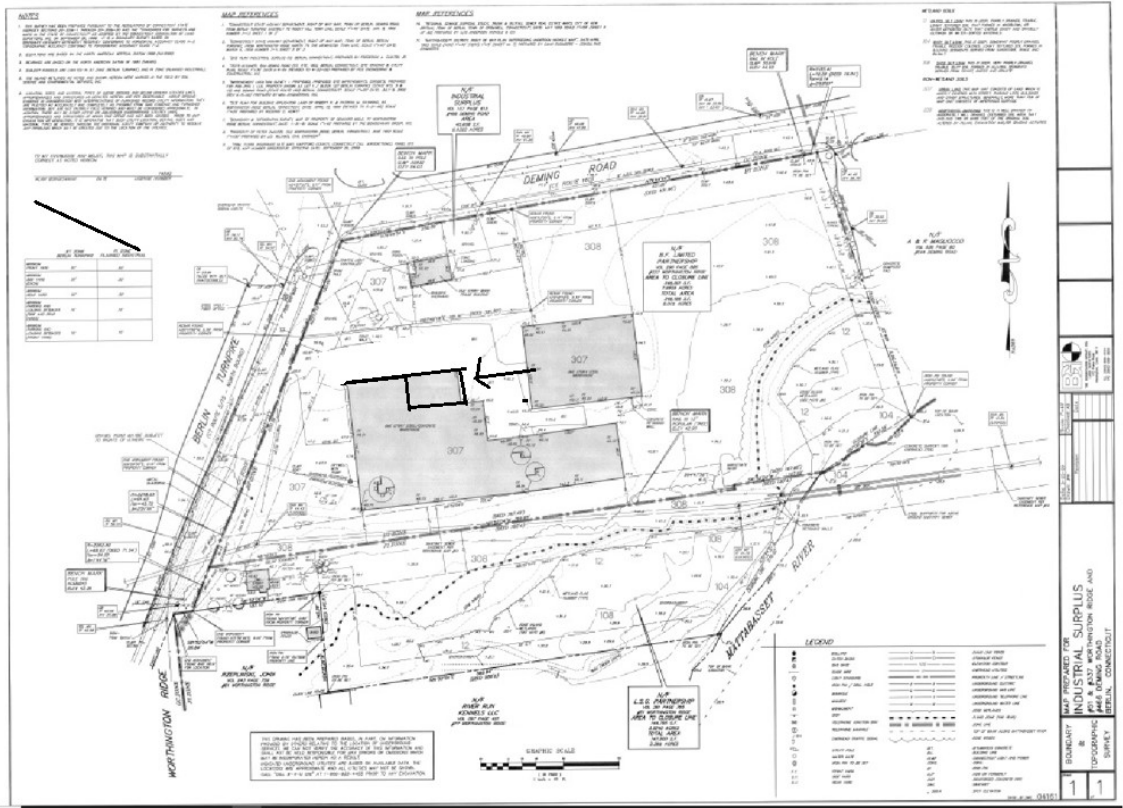
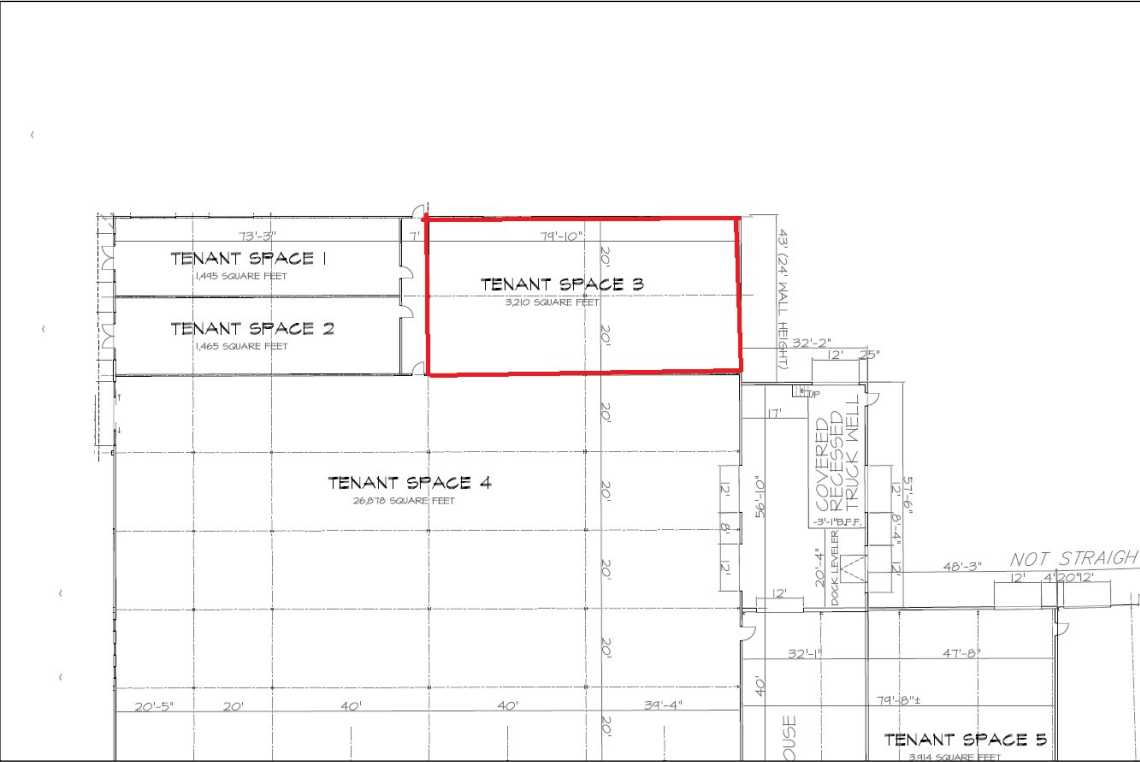


Tenant Space 2 is planned for a 1,465 square foot suite that measures about 20 feet wide with a depth of 73 feet, 3". Access will be from the west side of the building along the Berlin Turnpike and secondary access from a central hall to the northern exterior. The front of the suite will be finished with an anodized aluminum frame and plate glass.



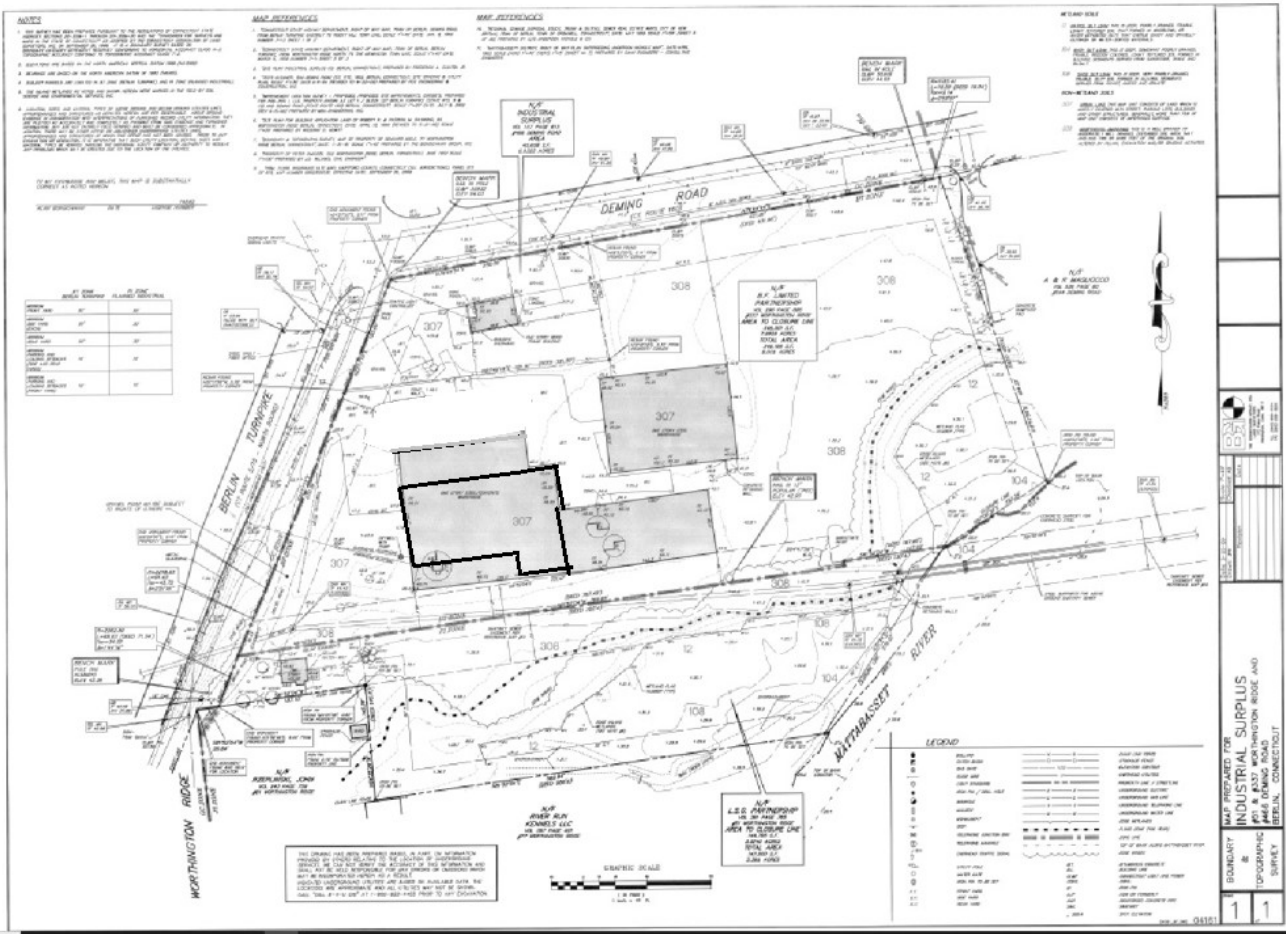
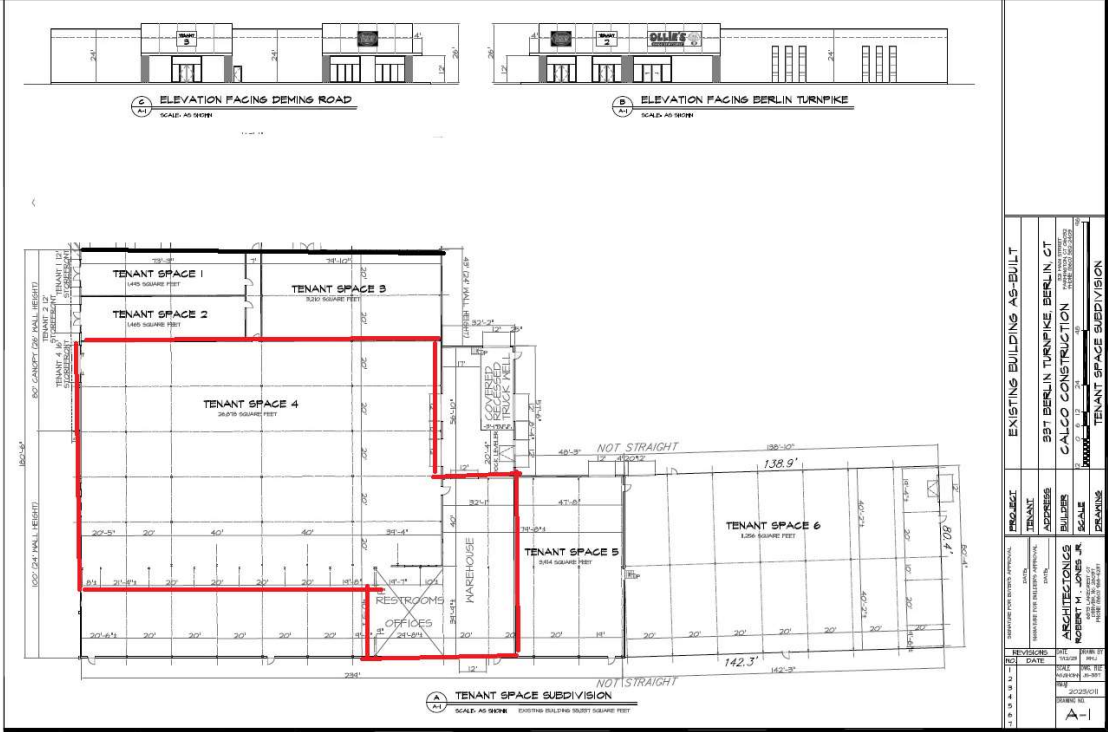


Tenant Space 3 is planned for a 3,210 square foot suite that measures about 40 feet wide with a depth of 73 feet, 3". Access will be from the north and east sides and secondary access from a central hall to the northern exterior. The north and east exterior walls will be of anodized aluminum frame and plate glass.



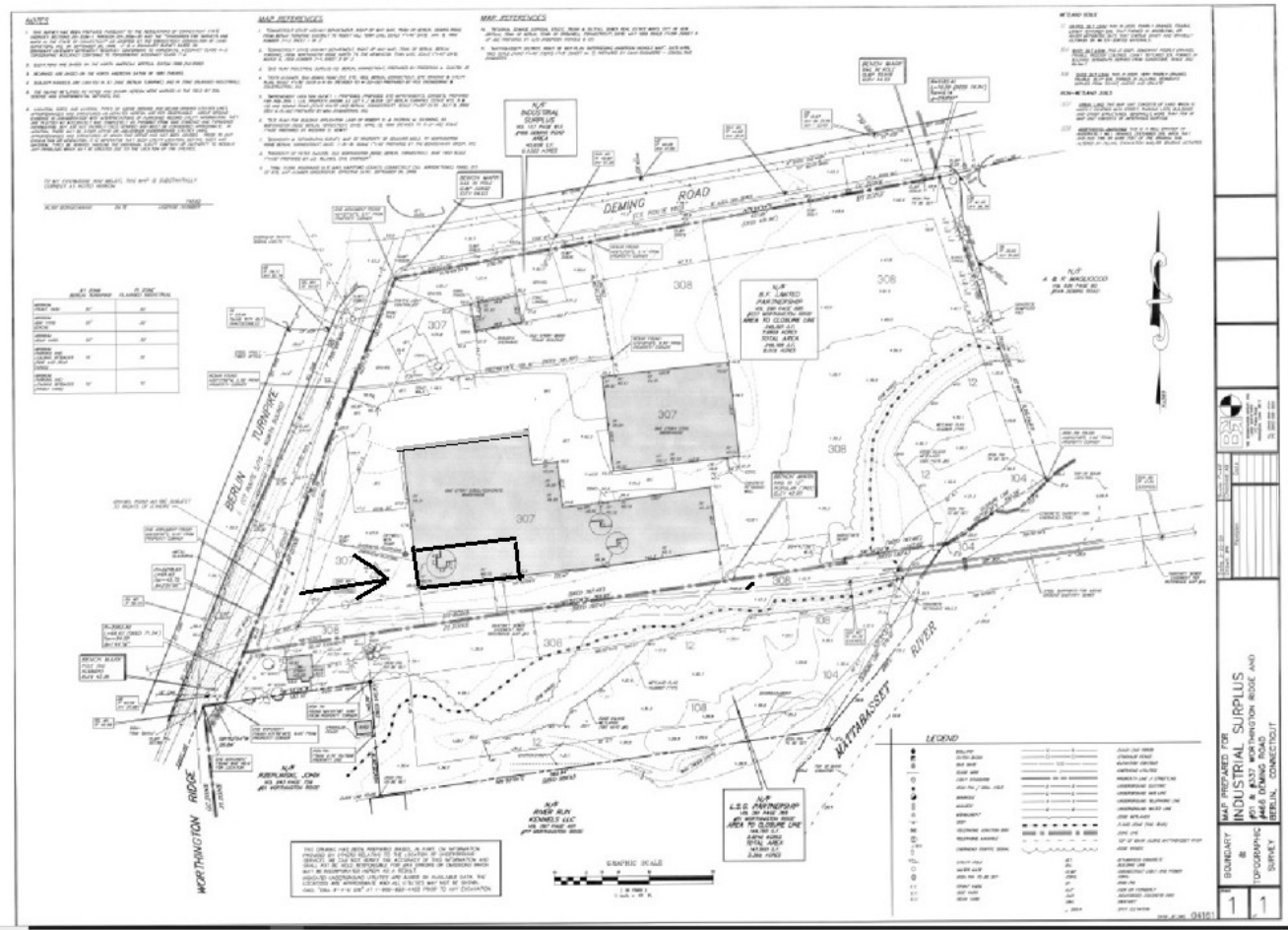
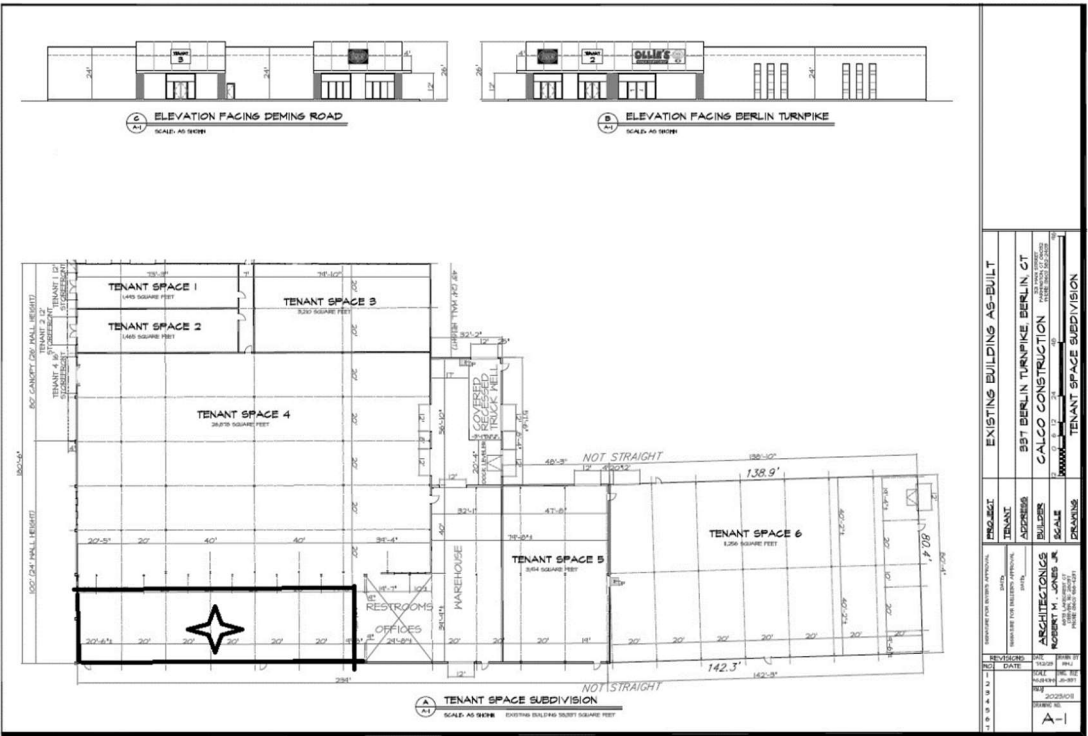


Tenant Space 4 is planned for a 26,878 square foot suite that measures about 100 feet wide with a depth of 160. Access is from the west side of the building for patrons and warehouse from the north. The façade will be finished with an anodized aluminum frame and plate glass. Warehouse will be raw on the interior.



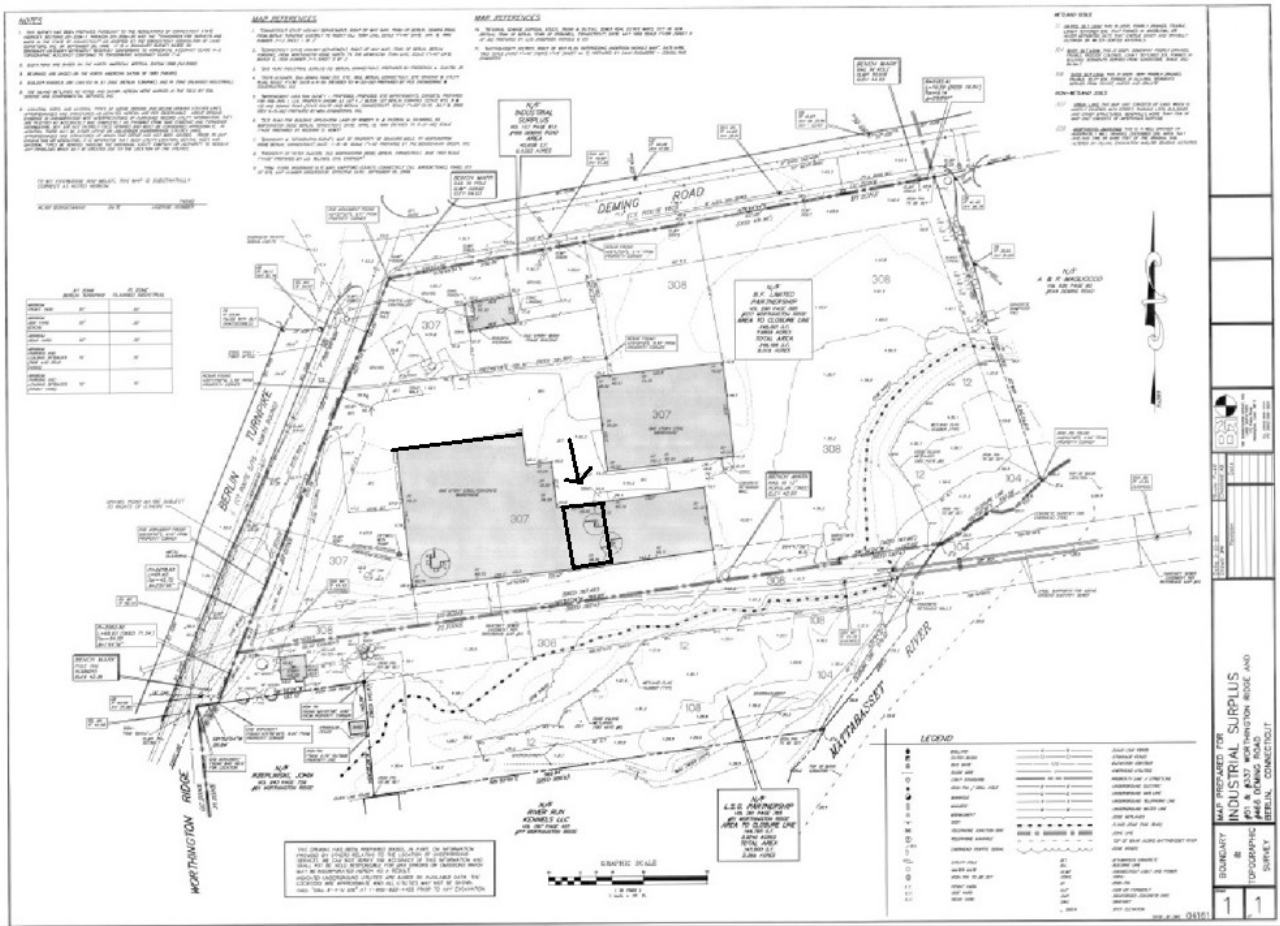
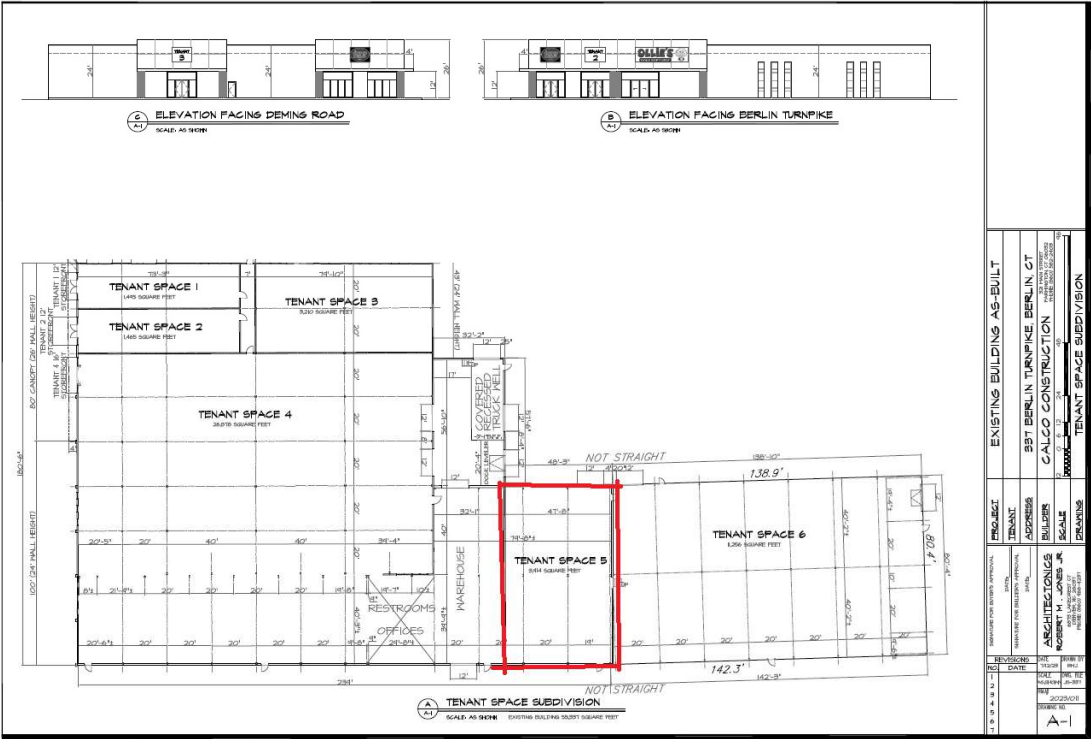


Tenant Space 4b is planned for a 6,400 square foot suite that measures about 40 feet wide with a depth of 160. Access will be from the west along the Berlin Turnpike with secondary access through the southern wall to the exterior.



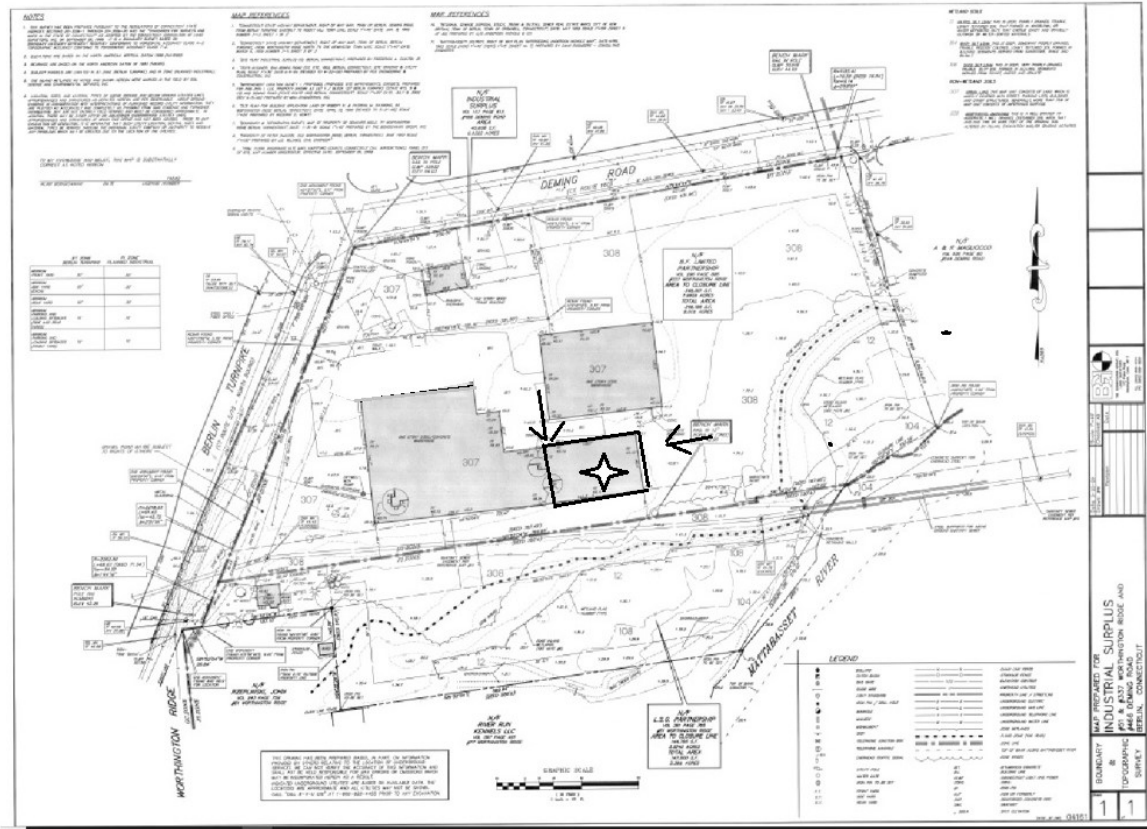
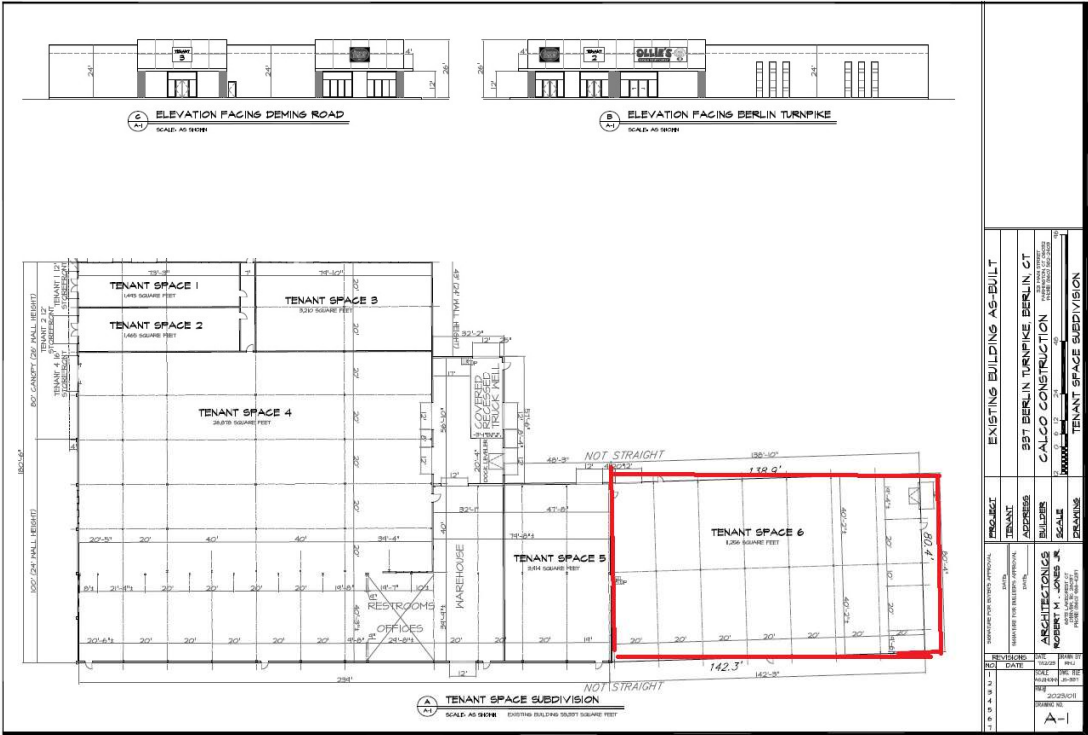


Tenant Space 5 is planned for a 3,914 square foot high clear height suite that measures about 48 feet wide with a depth of 80. Primary access will be from the north through standard doors with the option of an overhead door. Finishes depend on the tenant preferences ranging from limited finishes to fully finished.



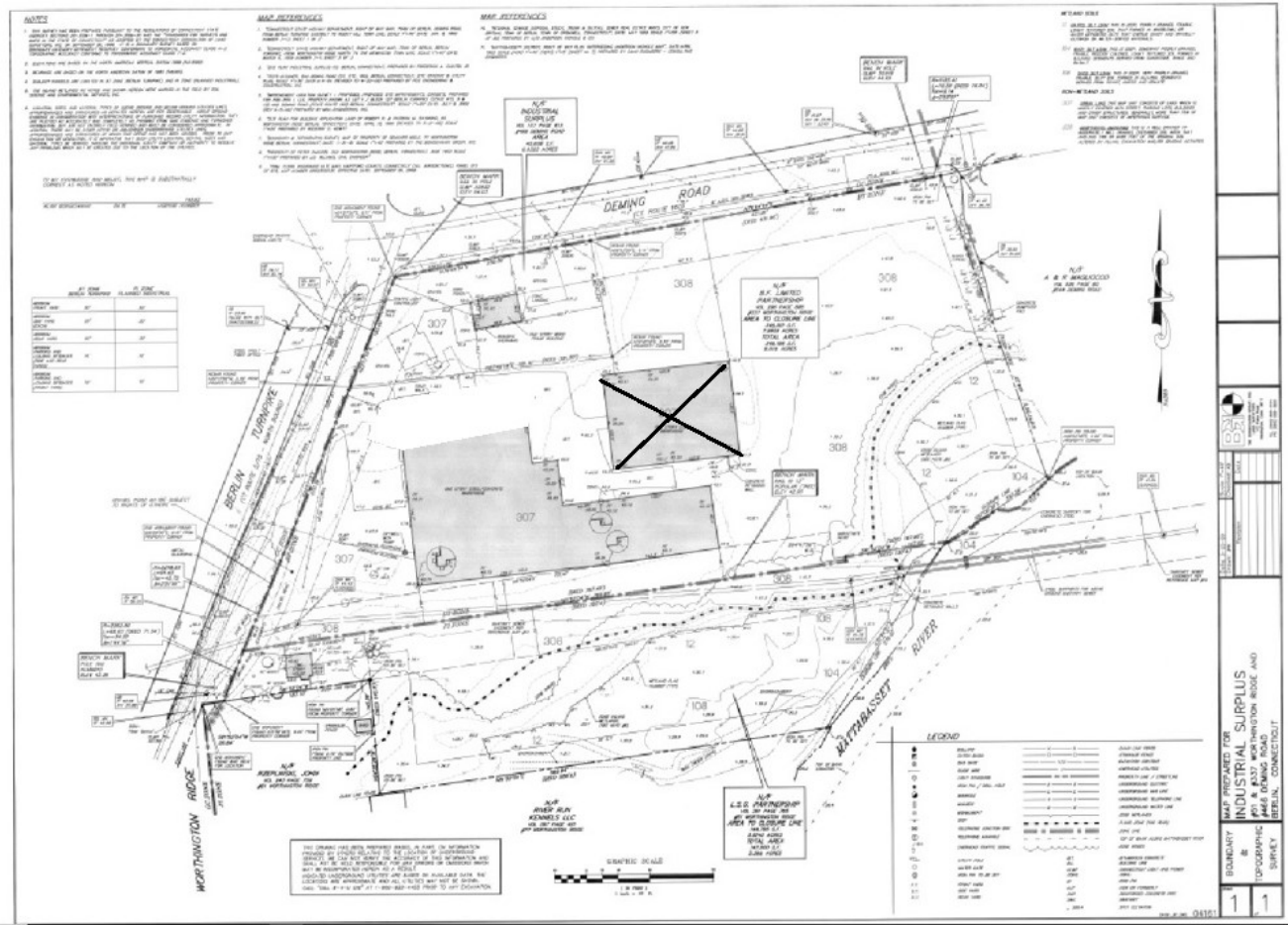


Tenant Space 6 is planned for a 11,256 square foot high clear height suite that measures about 140 feet wide with a depth of 80. Primary access will be from the north through standard doors with the option of overhead doors. Finishes depend on the tenant preferences ranging from limited finishes to fully finished.



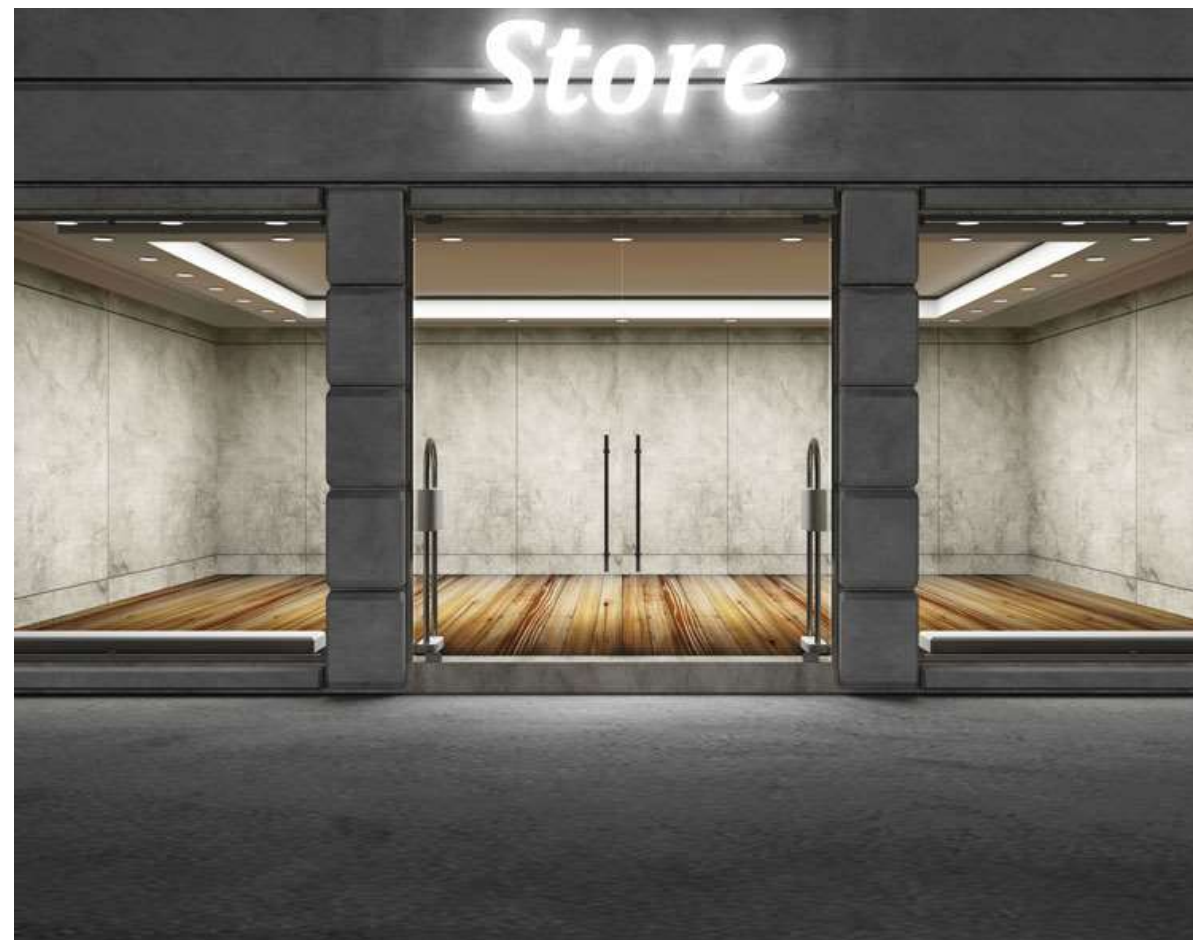


The freestanding warehouse is scheduled to be razed.





Suites 5 and 6 have the options to retain drive-in-doors and/or dock high-doors subject to Town approvals, Landlord and Tenant discretion.





Suites 5 and 6 have the options to retain drive-in-doors and/or dock high-doors subject to Town approvals, Landlord and Tenant discretion.

