

# FOR LEASE

## RETAIL SPACE WITH FRONTAGE ALONG US 41

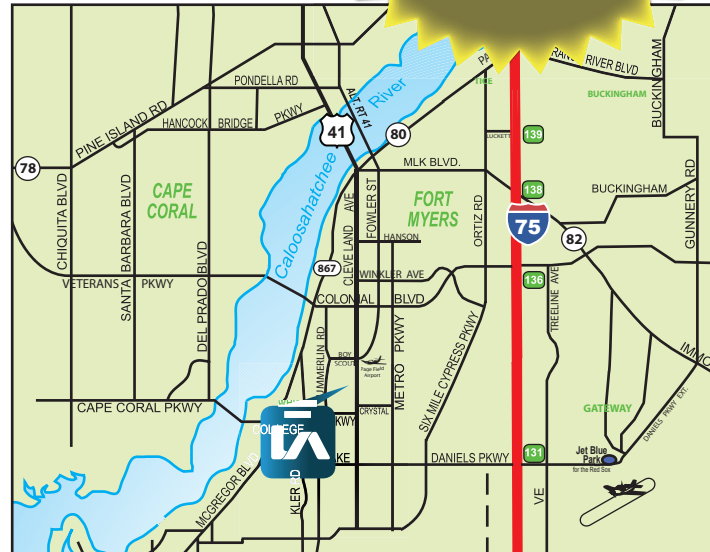
11120 S CLEVELAND AVENUE, FORT MYERS, FL 33907



- **AVAILABLE:** 1,200 SF - Unit A  
2,000 SF - Unit B  
3,200 SF - TOTAL
- **LEASE RATE:** \$14.00 / SF NNN
- **CAM:** \$5.30 / SF

### PROPERTY FEATURES

- Under New Ownership!
- Unit A has One (1) Grade-Level Door
- Unit B has Box-Truck High Doors with the Ability to Add a Ramp
- New Office, Restrooms, Paint, & Light Fixtures!
- 14 Parking Spots Plus a Dumpster Pad
- The Property has Over 130' of Frontage Along Cleveland Avenue (US 41)
- Zoned C-2 (Commercial - Lee County)  
[click here for permitted uses](#)



Please Contact:

**Colton Brausen**  
Vice President

239.210.7608

cbrausen@lee-associates.com

**Zack Tillery**  
Associate

239.210.7603

ztillery@lee-associates.com

All information furnished regarding property for sale, rental or financing is from sources deemed reliable, but no warranty or representation is made to the accuracy thereof and same is subject to errors, omissions, change of price, or other conditions prior to sale, lease or financing or withdrawal without notice. No liability of any kind is to be imposed on the broker herein.

YOUR LOCAL MARKET EXPERT

9979 Gulf Logistics Drive, Suite 210 | Fort Myers, Florida 33913 | Lee-FL.com





# FOR LEASE

## RETAIL SPACE WITH FRONTAGE ALONG US 41

11120 S CLEVELAND AVENUE, FORT MYERS, FL 33907

**LEE & ASSOCIATES**  
COMMERCIAL REAL ESTATE SERVICES



YOUR LOCAL MARKET **EXPERT**  
9979 Gulf Logistics Drive, Suite 210 | Fort Myers, Florida 33913 | Lee-FL.com

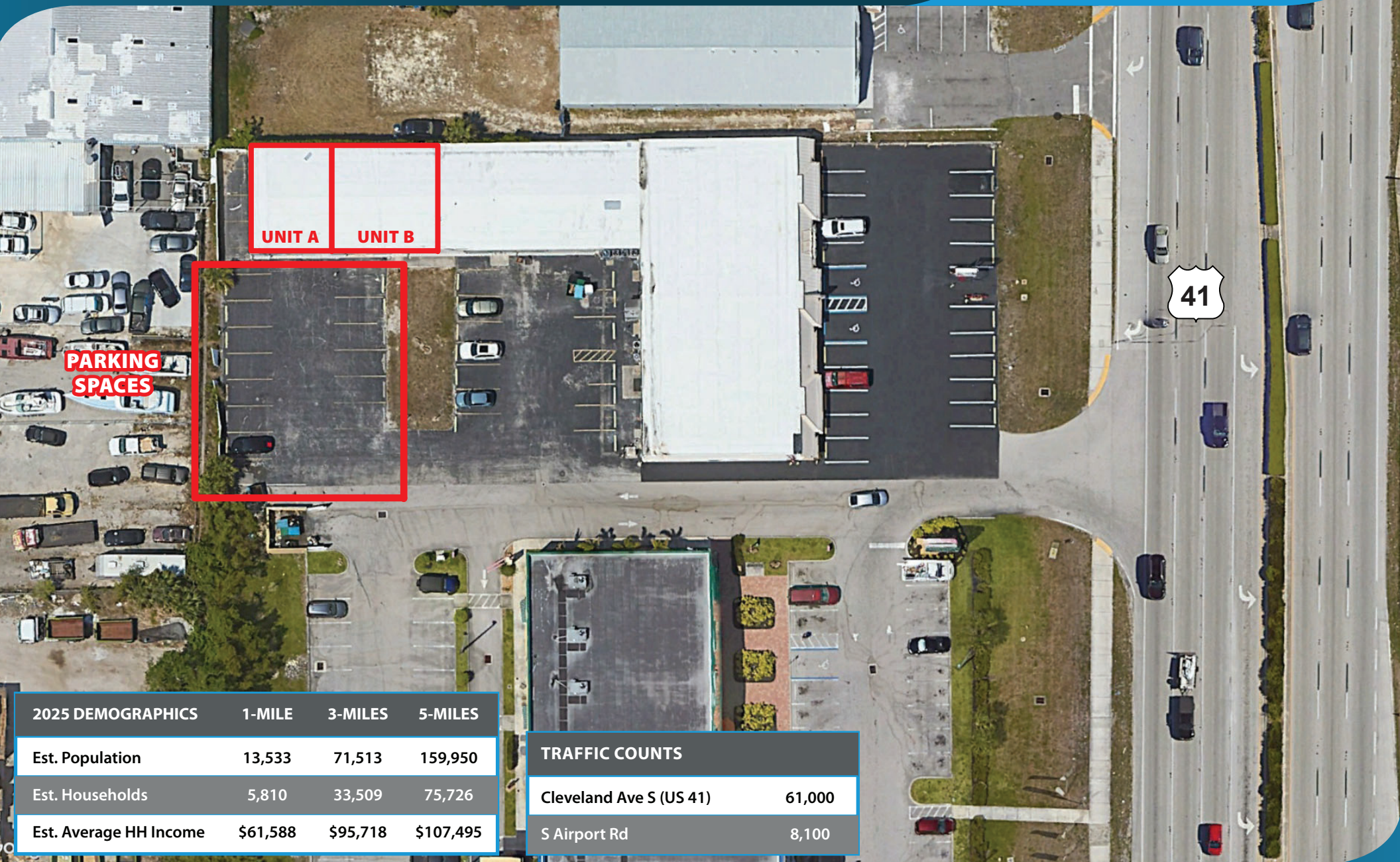




# FOR LEASE

## RETAIL SPACE WITH FRONTAGE ALONG US 41

11120 S CLEVELAND AVENUE, FORT MYERS, FL 33907



### 2025 DEMOGRAPHICS

	1-MILE	3-MILES	5-MILES
Est. Population	13,533	71,513	159,950
Est. Households	5,810	33,509	75,726
Est. Average HH Income	\$61,588	\$95,718	\$107,495

### TRAFFIC COUNTS

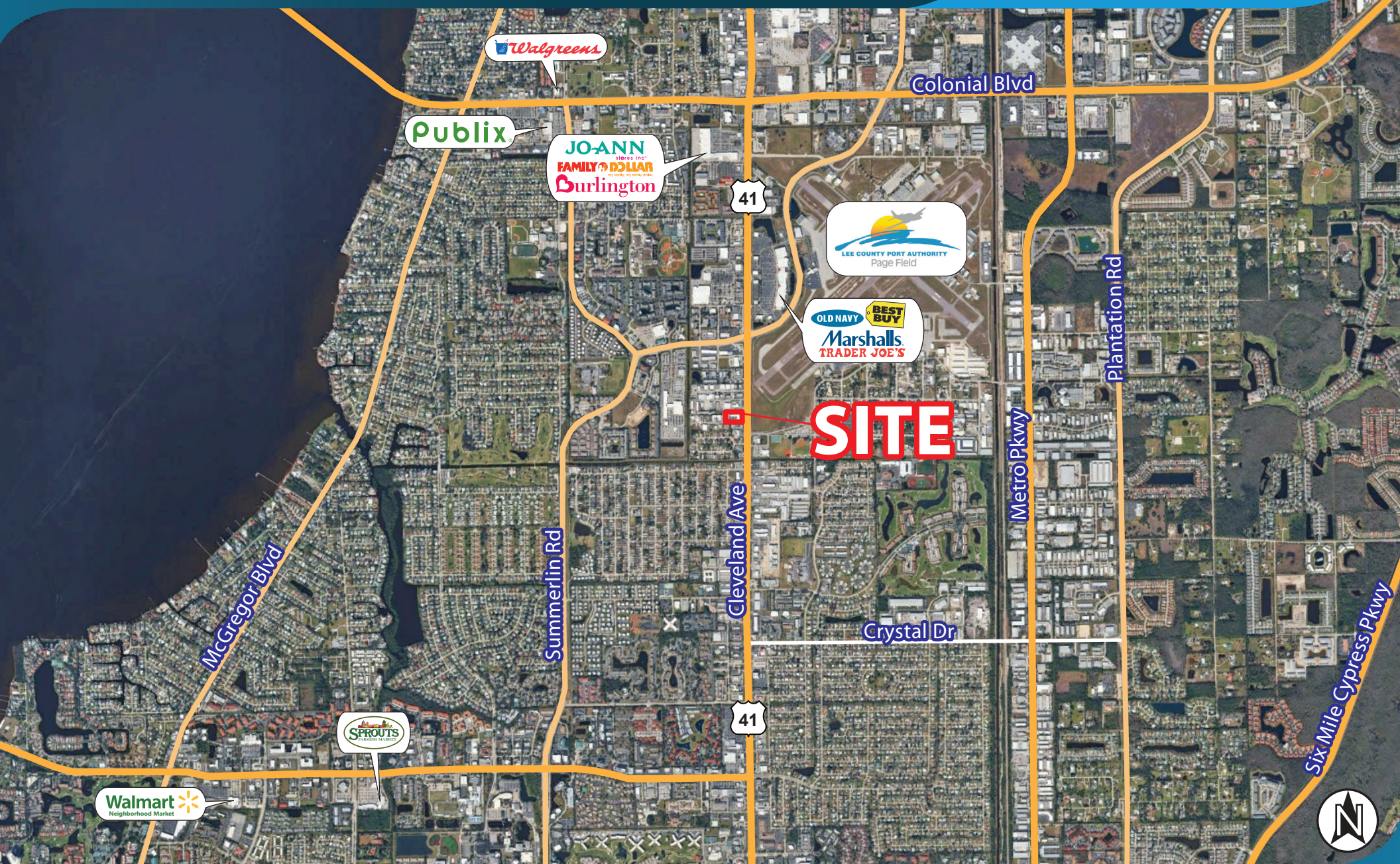
Cleveland Ave S (US 41)	61,000
S Airport Rd	8,100



# FOR LEASE

## RETAIL SPACE WITH FRONTAGE ALONG US 41

11120 S CLEVELAND AVENUE, FORT MYERS, FL 33907



YOUR LOCAL MARKET **EXPERT**

9979 Gulf Logistics Drive, Suite 210 | Fort Myers, Florida 33913 | Lee-FL.com