

1558 Cherry Street

Louisville, CO 80027

INDUSTRIAL/FLEX BUILDING
24,366 SF



FOR SALE





PROPERTY HIGHLIGHTS

1558 Cherry Street is a rare stand-alone industrial building in the highly coveted Colorado Technology Center (CTC). The property features 10,848 SF of two-story office space and 13,518 SF of warehouse space with abundant power and dock-high and drive-in loading capabilities.

Building Size	24,366 SF	Site Size	2.35 Acres
Office Size	10,848 SF (Two-Story)	County	Boulder
Warehouse Size	13,518 SF	Zoning	(I) Industrial
Clear Height	22'	Mill Levy	90.131
Year Built	1997	Parking	39 Surface Parking Spaces
Power	2,000 Amps, 208 & 480 Volt (to be verified)	Sprinkler	Yes
Loading	One (1) Drive-In Two (2) Dock-High		

SALE PRICE: CONTACT BROKERS

1ST FLOOR

TOTAL FIRST FLOOR: 18,512 SF

WAREHOUSE: 13,518 SF

OFFICE: 4,994 SF

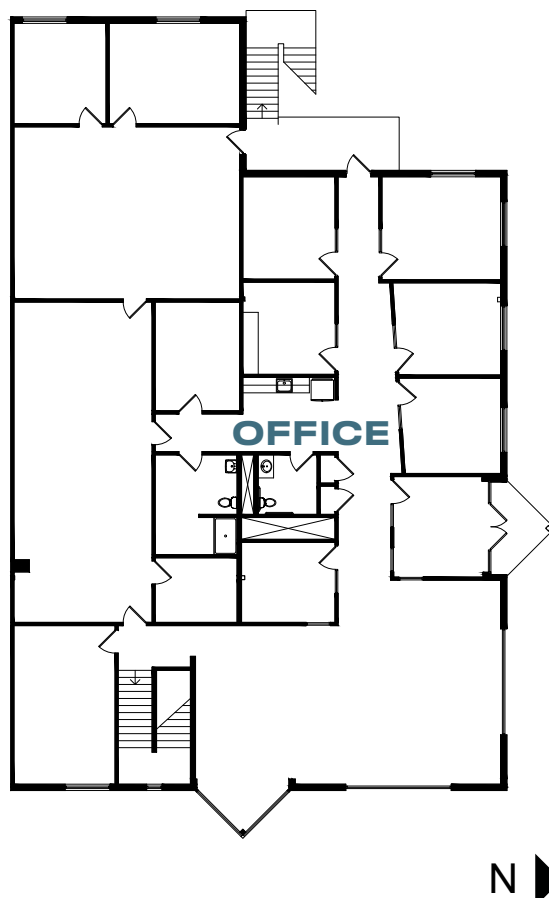
22' CLEAR

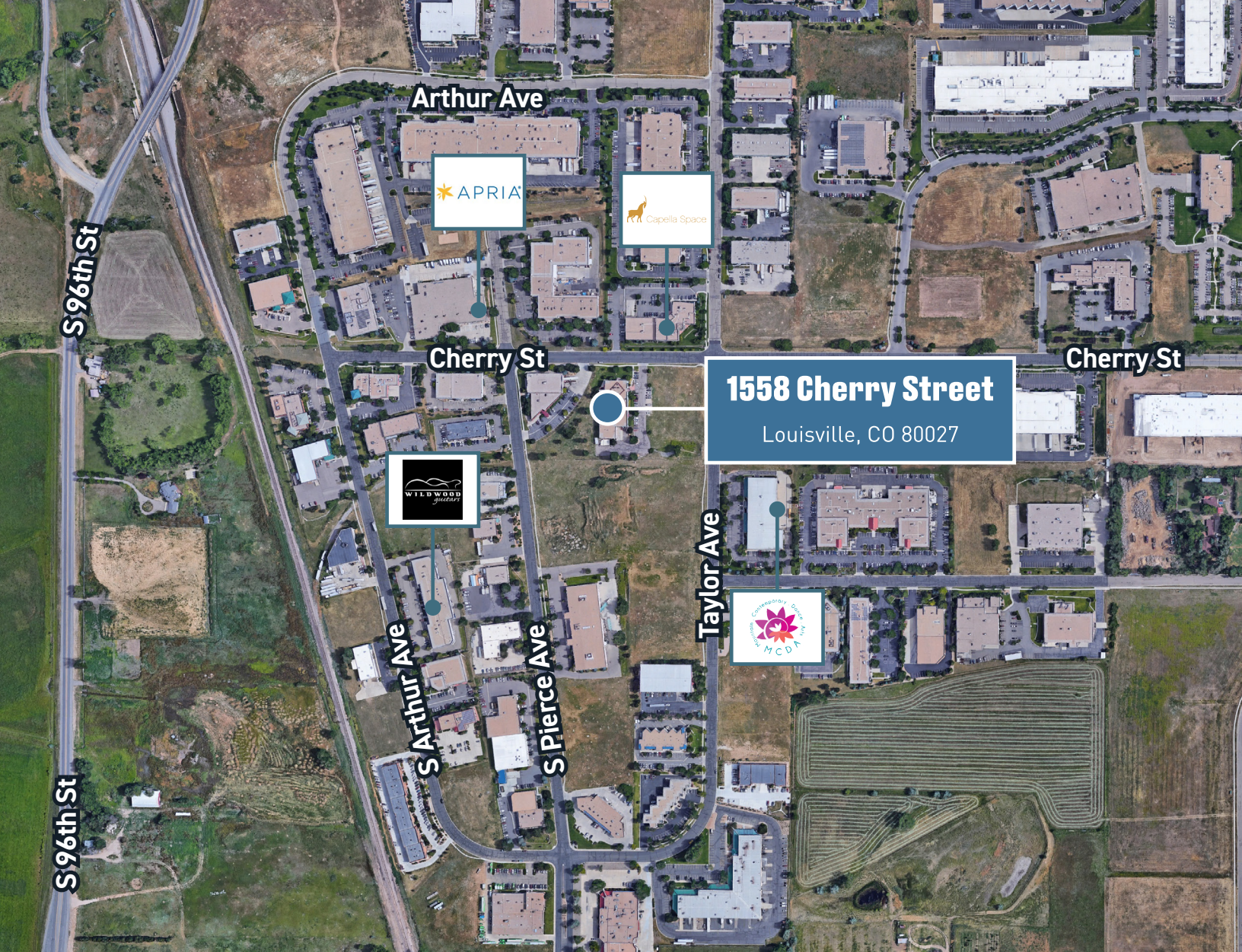


2ND FLOOR

OFFICE: 5,854 SF

- Rare stand-alone industrial building
- 39 Surface Parking Spaces





1558 Cherry Street

Louisville, CO 80027



HUGHES MARINO

FOR MORE INFORMATION, PLEASE CONTACT:

DAVID LEE

720-217-7223

david.lee1@jll.com

PHILIP LEE

303-257-5915

philip.lee1@jll.com

BRETT HASKINS

303-888-7365

brett.haskins@hughesmarino.com

Although information has been obtained from sources deemed reliable, JLL does not make any guarantees, warranties or representations, express or implied, as to the completeness or accuracy as to the information contained herein. Any projections, opinions, assumptions or estimates used are for example only. There may be differences between projected and actual results, and those differences may be material. JLL does not accept any liability for any loss or damage suffered by any party resulting from reliance on this information. If the recipient of this information has signed a confidentiality agreement with JLL regarding this matter, this information is subject to the terms of that agreement. ©2025 Jones Lang LaSalle Brokerage, Inc. All rights reserved.