

SOUTHEAST TULA CONTEMPORARY OFFICE/TECH SPACE FOR LEASE



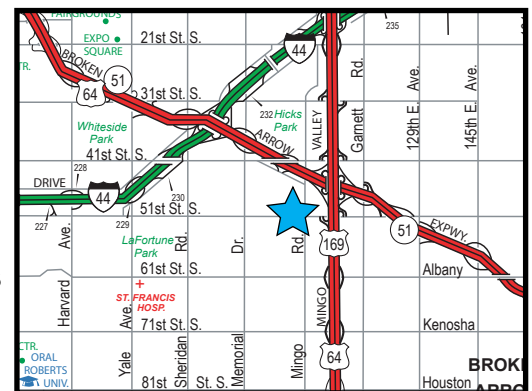
9410 E 51ST ST, TULSA, OK 74145
MARKET PLACE WEST

SIZES

- 1,380 - 4,007 SF
(See floor plan)

FEATURES

- Quality office/flex service center; newly repainted
- Flexibility with lease sizes and expansion needs
- Professional Front Office configuration with large window offices
- “Drive Up” front door parking convenience
- Exterior security cameras
- Locally owned and managed
- Building signage
- Abundant Parking
- Premier Southeast 51st Mingo Location
- Convenient ½ mile access to US 169/BA Expressway



The information contained herein is believed to be accurate but is not guaranteed as to accuracy and may change or be updated without notice.

Contact: Monty Berry, CCIM

Office (918) 280-9900 | **Cell** (918) 695-4162 | **Fax** (918) 280-9902

E-mail Monty@EquitasRealty.com

Aerial



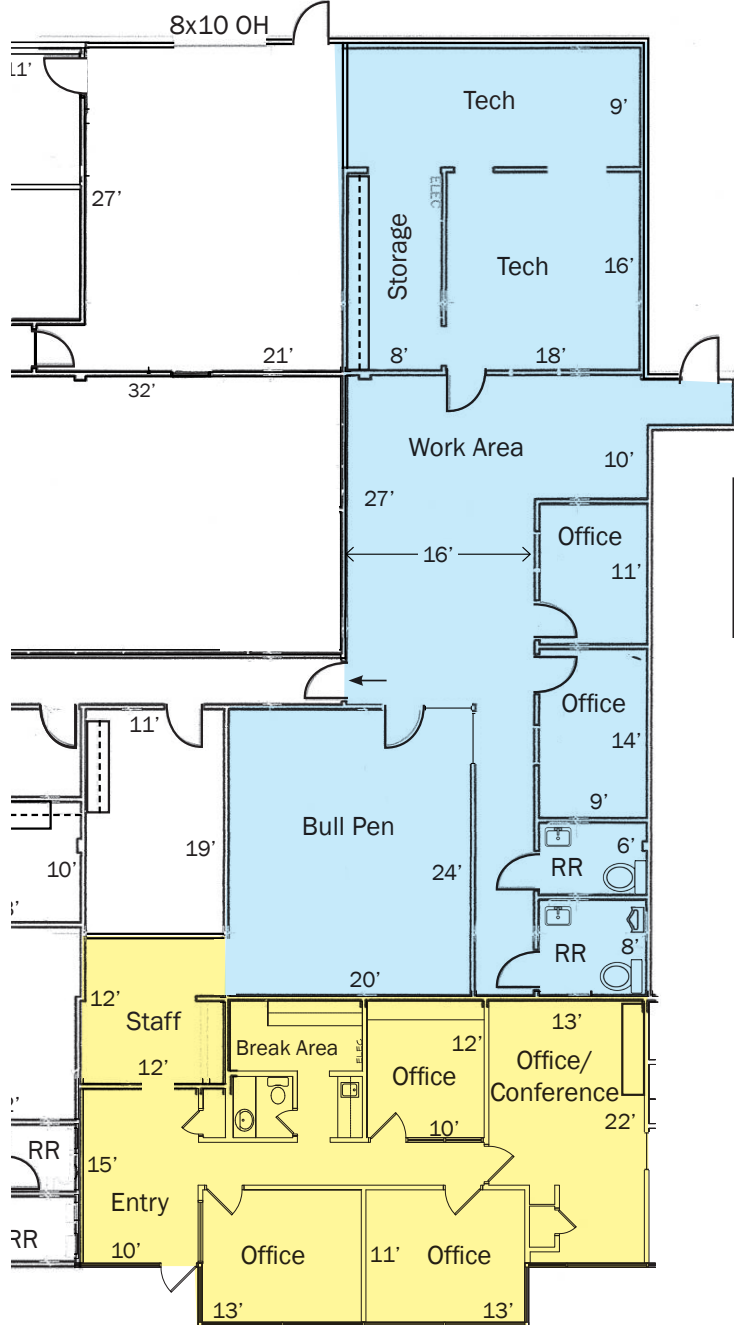
Floor Plan

SUITE E - 1,380-4,007 SF

To 51st St



Truck/Service Access Alleyway



Additional 2,627 SF
Work/Tech Area
Lease Partial or All

Minimum Lease Area
1,380 SF
Front Executive
Office Section

To 51st St



94th East Avenue

Photos Suite E



Entry



Corridor



Office/Conference



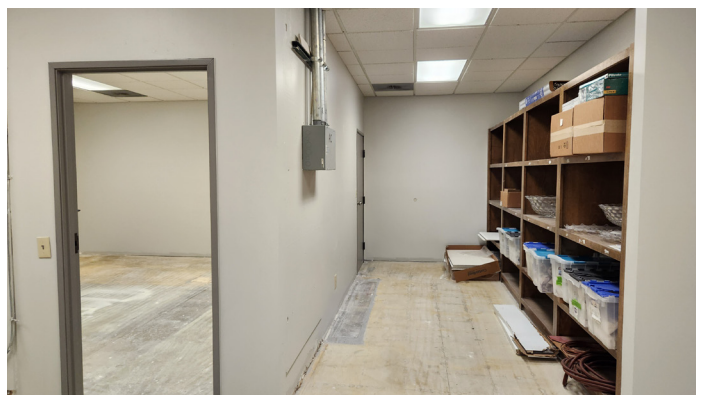
Office



Kitchenette



Work Area/Bullpen



Tech/Storage