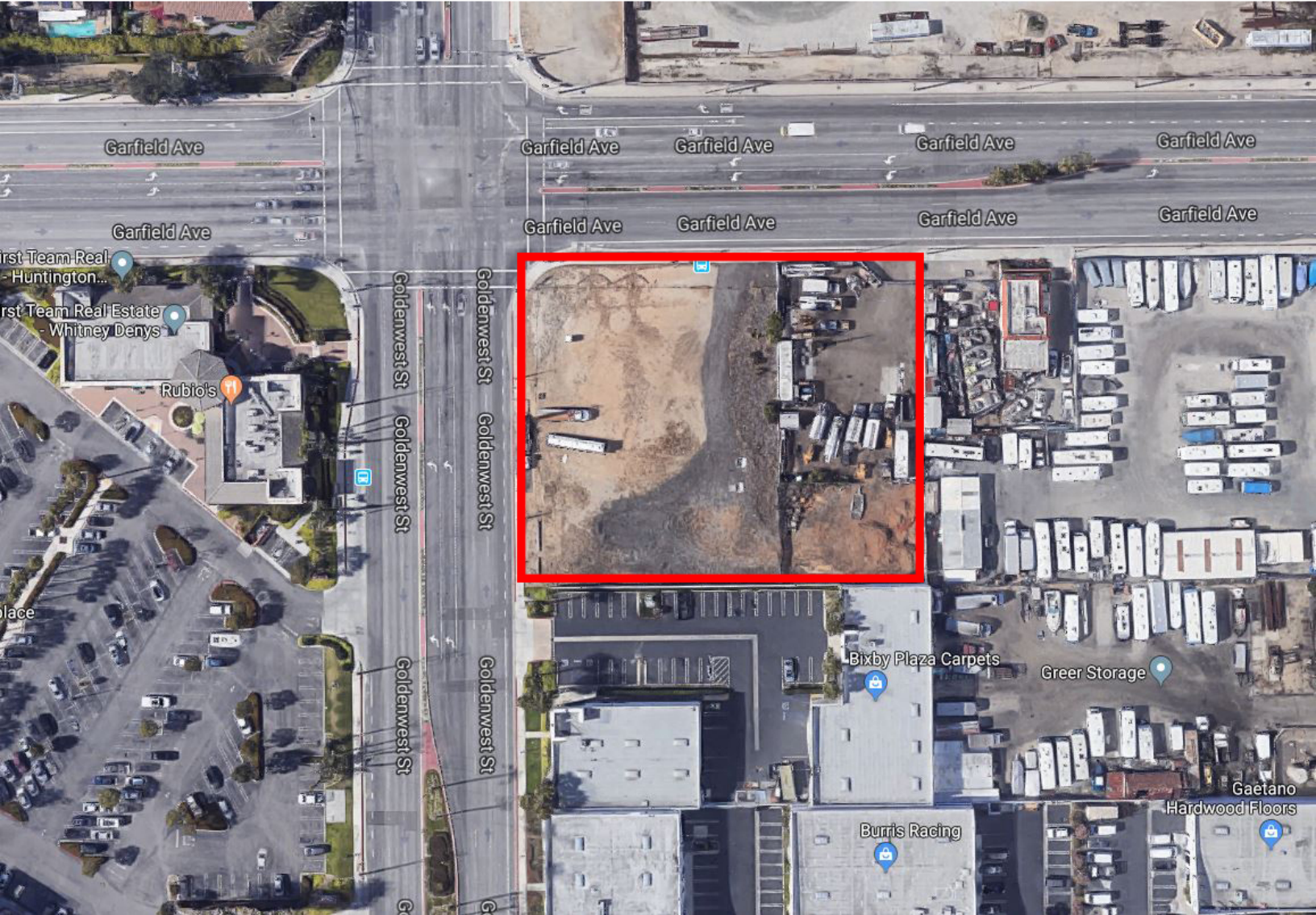


AVAILABLE FOR LEASE

PRIME CORNER LOT

SE CORNER OF GOLDENWEST ST & GARFIELD AVENUE
HUNTINGTON BEACH, CA



PRESENTED BY

Bill Gilmore

818.949.5243

CalDRE #BRE00955844

bgilmore@coldwellbanker.com



NRT

EXCLUSIVELY MARKETED BY:



NRT

TABLE OF CONTENTS

PROPERTY INFORMATION

4 EXECUTIVE SUMMARY

LOCATION INFORMATION

6 ZONING MAP

7 REGIONAL MAP

8 LOCATION MAPS

9 AERIAL MAPS

10 FAST FOOD MAP

11 RETAILER MAP

12 GAS MAP

DEMOGRAPHICS

14 DEMOGRAPHICS MAP & REPORT

www.cbcworldwide.com



COLDWELL BANKER COMMERCIAL

657 FOOTHILL BLVD

LA CANADA FLINTRIDGE, CA 91011

818-790-3344

©2018 Coldwell Banker Real Estate LLC, Coldwell Banker Commercial Coldwell Banker Commercial Affiliates. All Rights Reserved. Coldwell Banker Real Estate LLC, Coldwell Banker Commercial Coldwell Banker Commercial Affiliates fully supports the principles of the Equal Opportunity Act. Each Office is Independently Owned and Operated. Coldwell Banker Commercial and the Coldwell Banker Commercial Logo are registered service marks owned by Coldwell Banker Real Estate LLC, Coldwell Banker Commercial Coldwell Banker Commercial Affiliates. Each sales representative and broker is responsible for complying with any consumer disclosure laws or regulations.

1

PROPERTY INFORMATION

EXECUTIVE SUMMARY

PRESENTED BY

Bill Gilmore

818.949.5243

CalDRE #BRE00955844

bgilmore@coldwellbanker.com



NRT

2

LOCATION INFORMATION

ZONING MAP

REGIONAL MAP

LOCATION MAPS

AERIAL MAPS

FAST FOOD MAP

RETAILER MAP

GAS MAP

PRESENTED BY

Bill Gilmore

818.949.5243

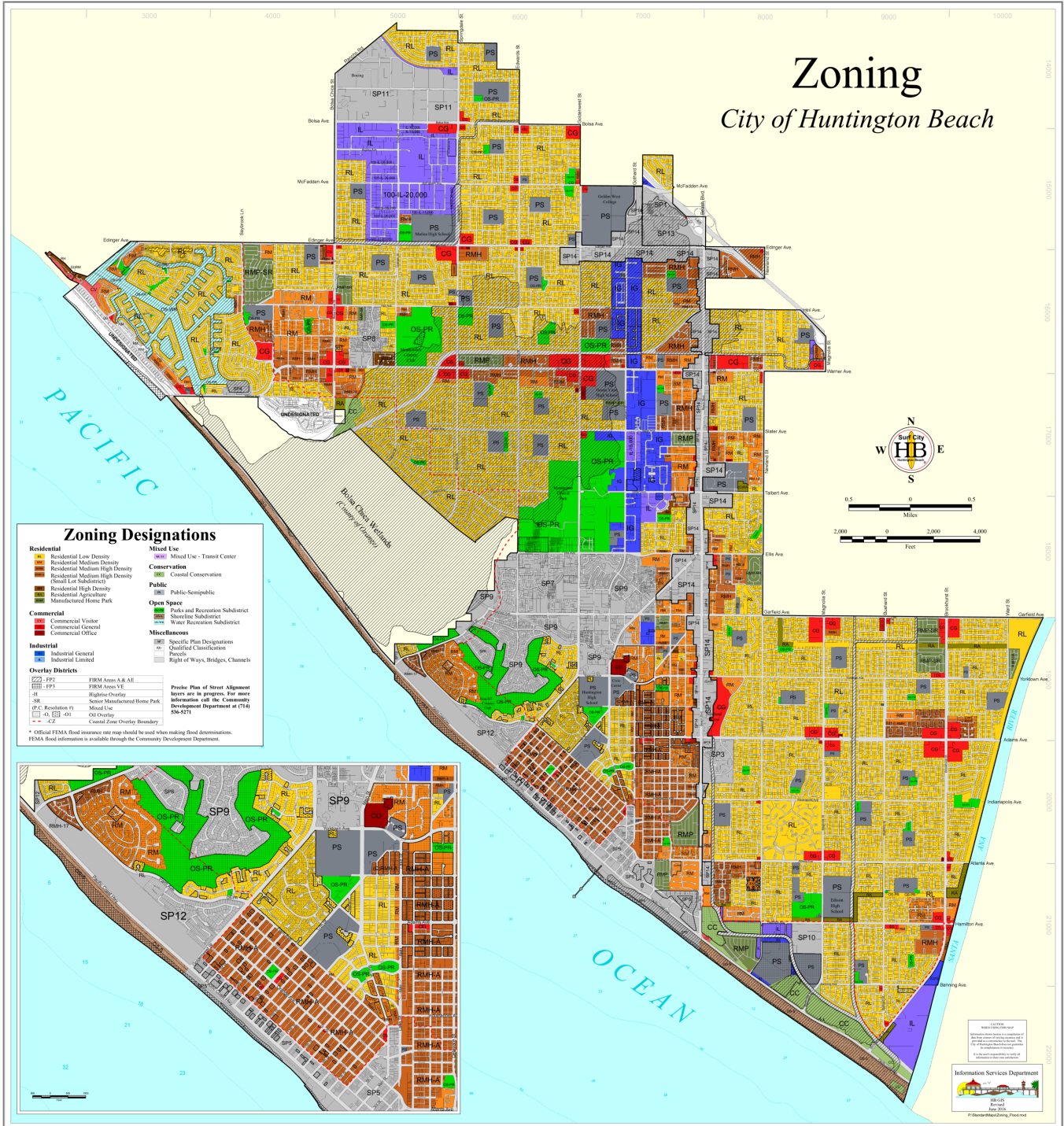
CalDRE #BRE00955844

bgilmore@coldwellbanker.com

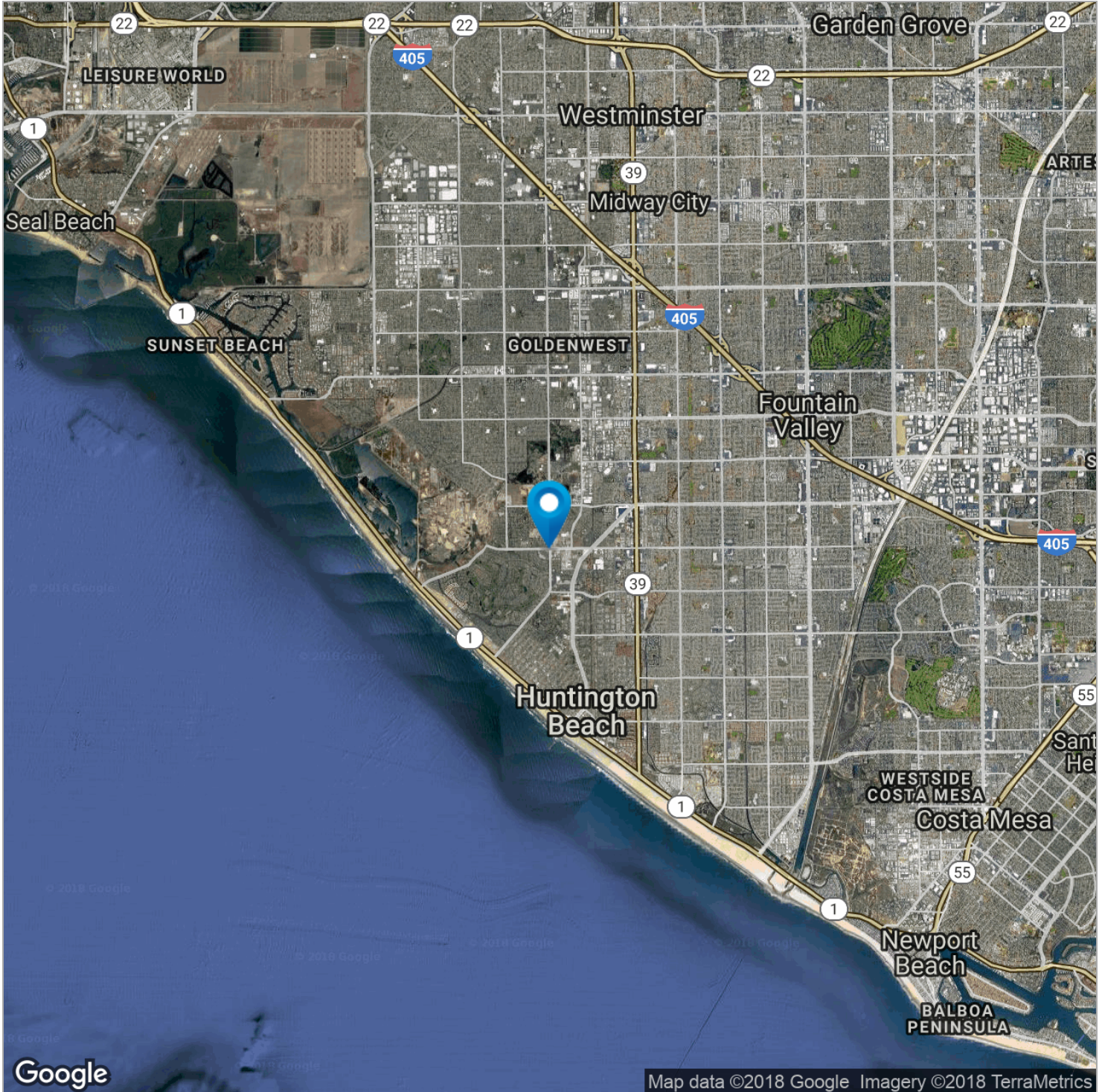


NRT

LOCATION INFORMATION
ZONING MAP

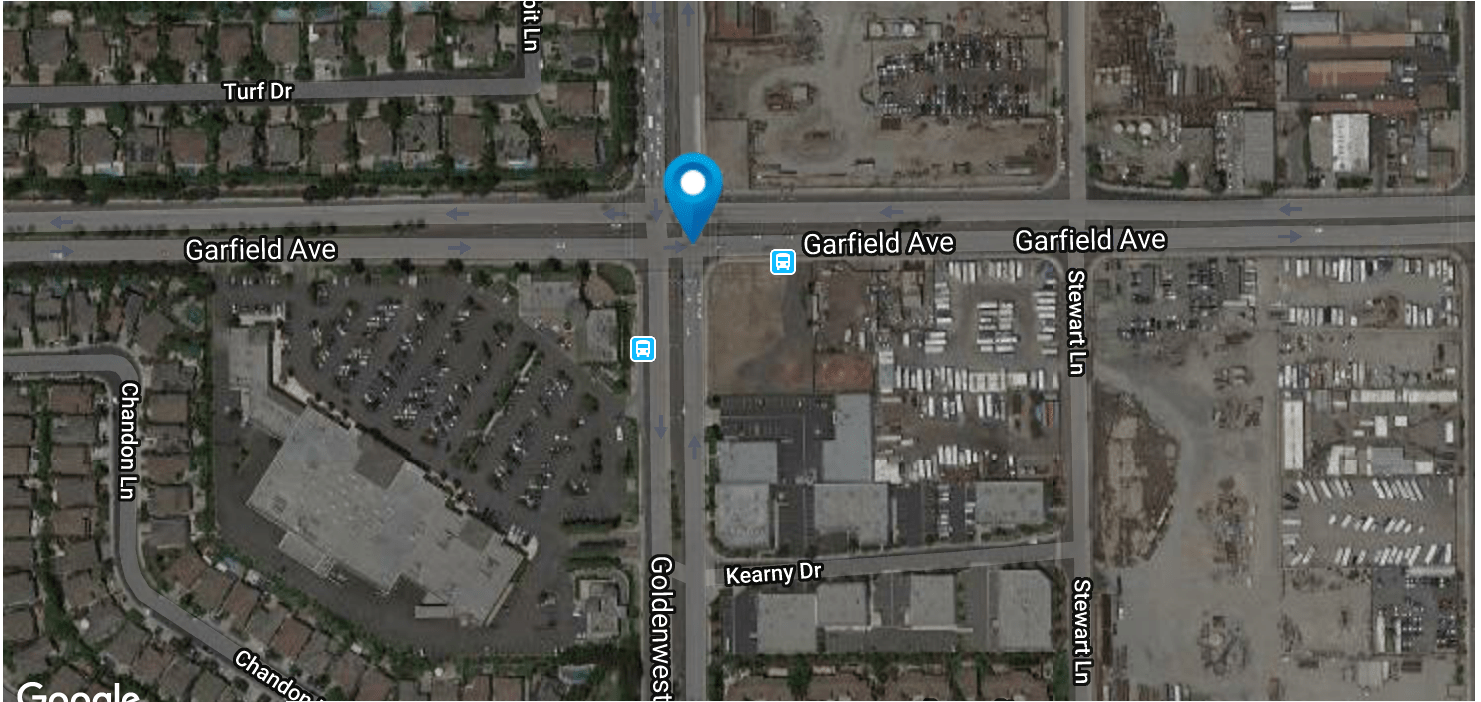


LOCATION INFORMATION
REGIONAL MAP

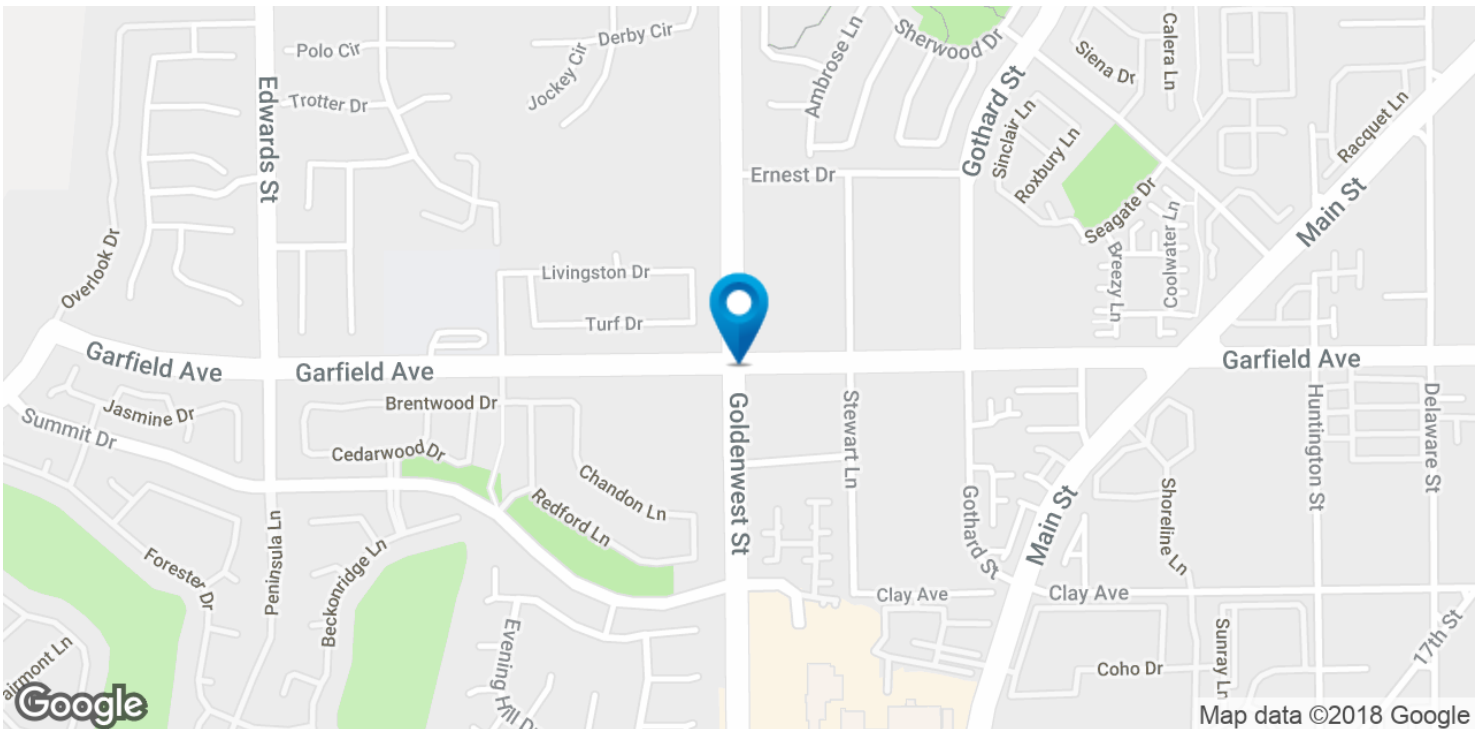


LOCATION INFORMATION

LOCATION MAPS

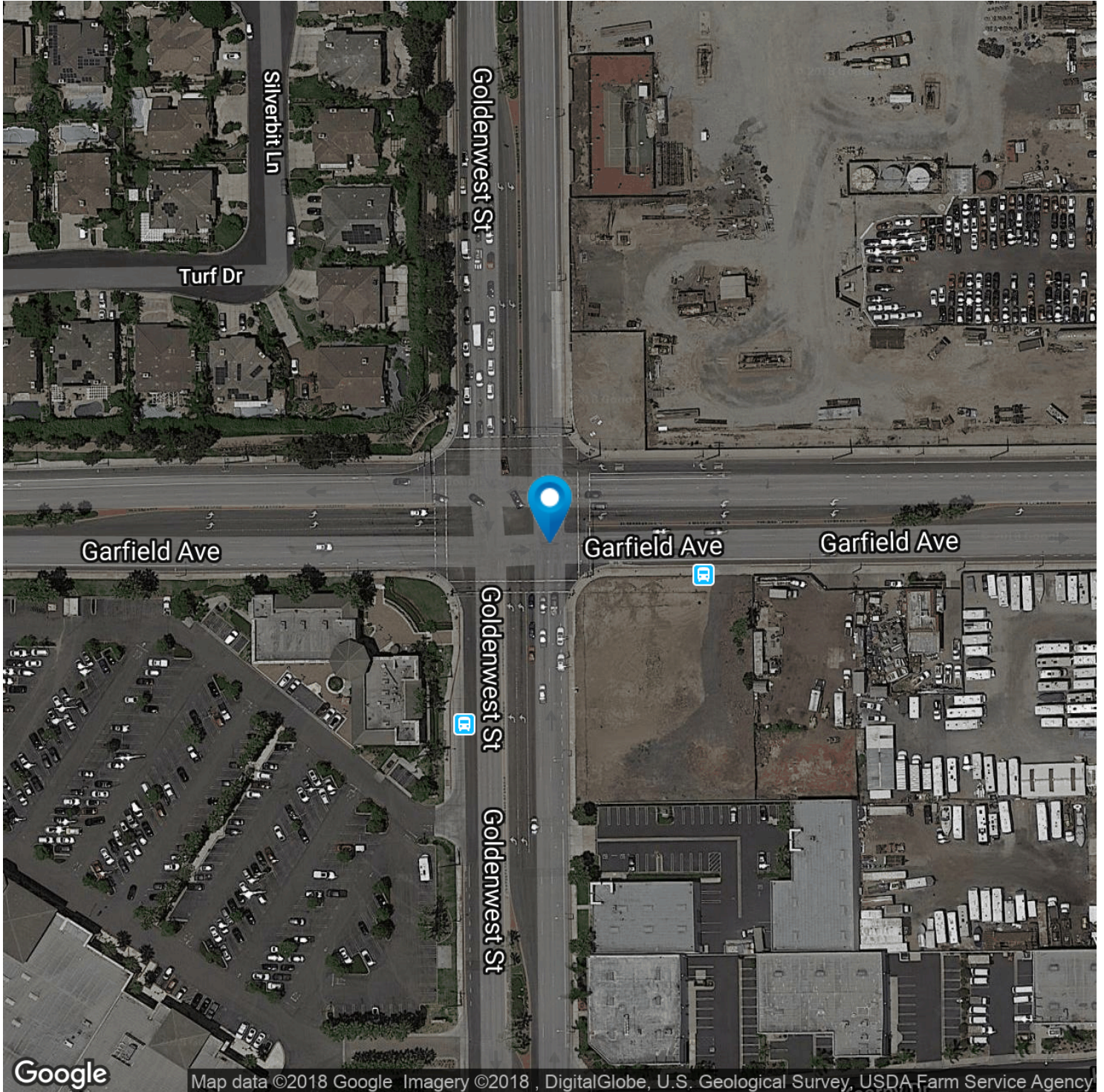


Map data ©2018 Google Imagery ©2018 , DigitalGlobe, U.S. Geological Survey, USDA Farm Service Agency

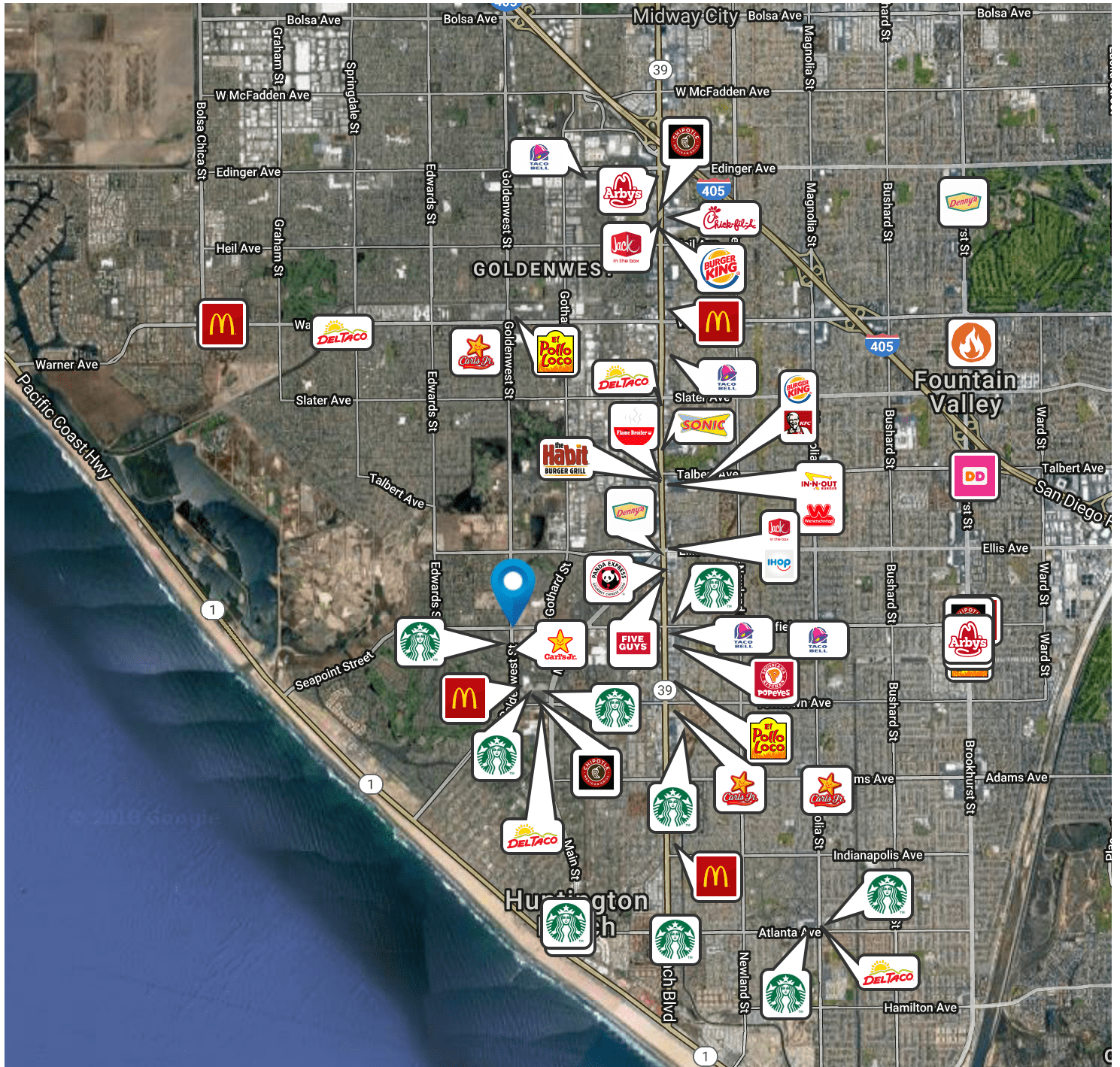


Map data ©2018 Google

LOCATION INFORMATION
AERIAL MAPS



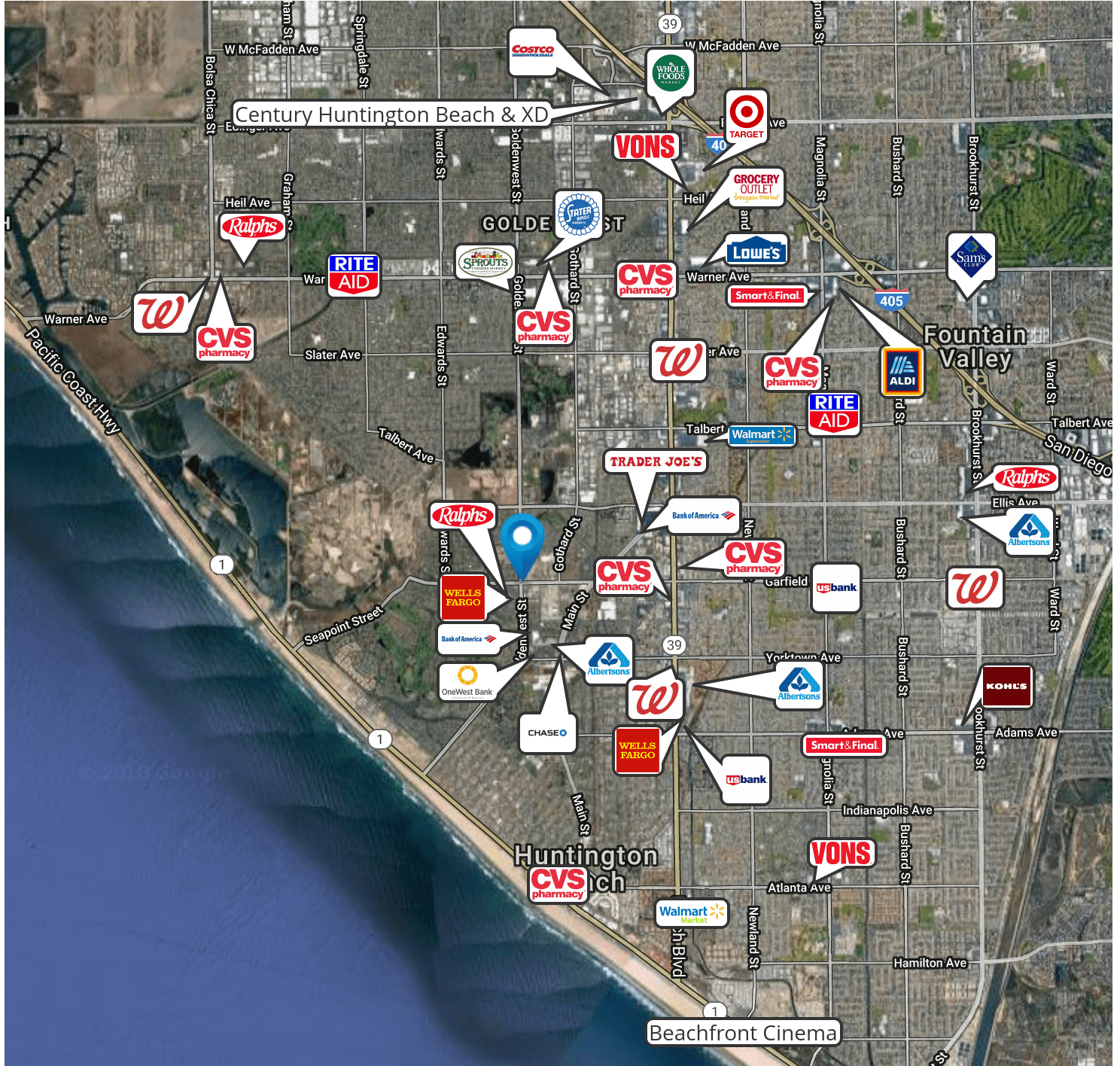
LOCATION INFORMATION
FAST FOOD MAP



Google

Map data ©2018 Google Imagery ©2018 , County of San Bernardino, Data CSUMB SFML, CA OPC, Data USGS, DigitalGlobe, Landsat / Copernicus, Sanborn, U.S. Geological Survey, USDA Farm Service Agency

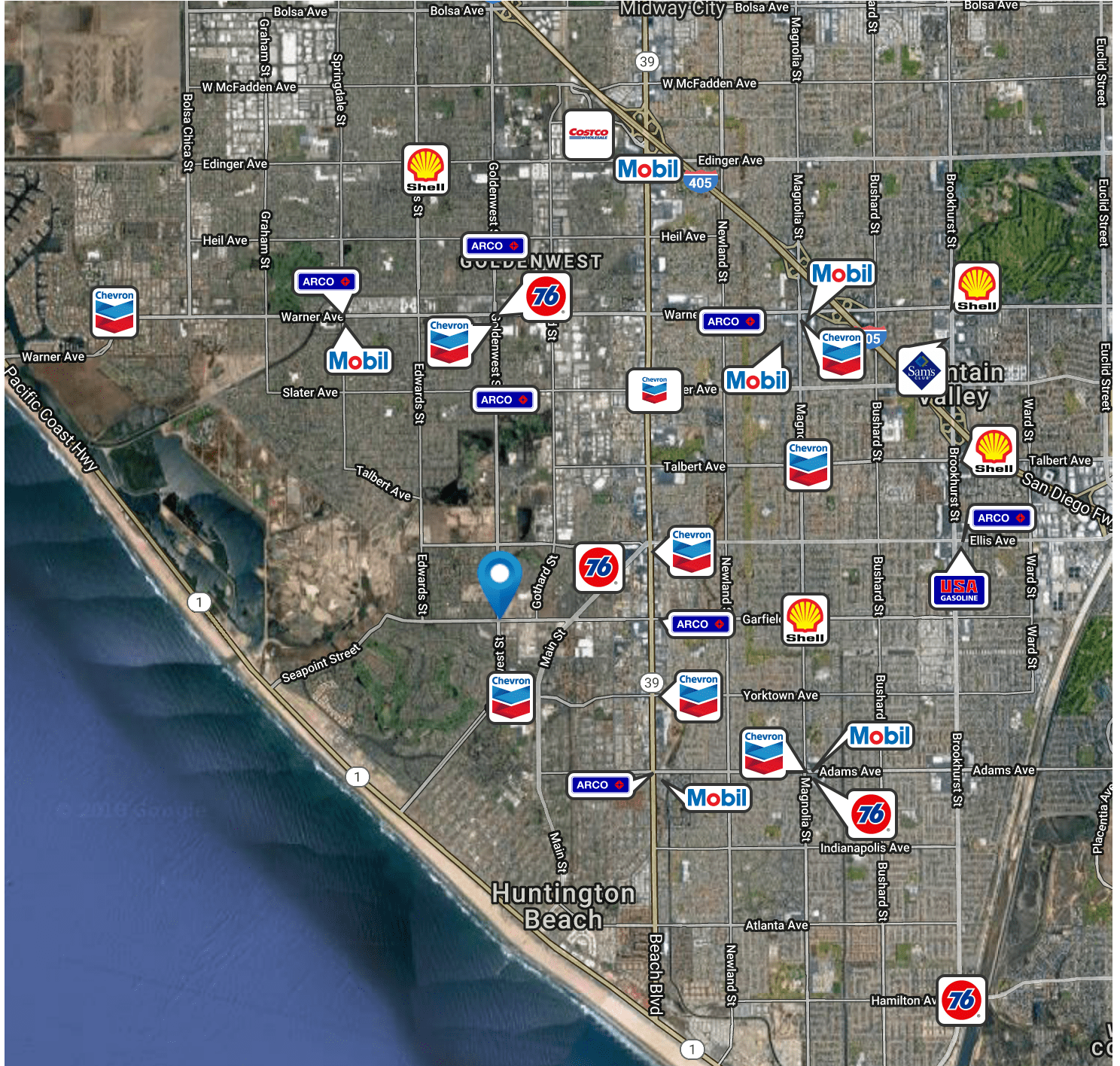
LOCATION INFORMATION
RETAILER MAP



Google

Map data ©2018 Google Imagery ©2018, County of San Bernardino, Data CSUMB SFML, CA OPC, Data USGS, DigitalGlobe, Landsat / Copernicus, Sanborn, U.S. Geological Survey, USDA Farm Service Agency

LOCATION INFORMATION
GAS STATIONS



Google

Map data ©2018 Google Imagery ©2018, County of San Bernardino, Data CSUMB SFML, CA OPC, Data USGS, DigitalGlobe, Landsat / Copernicus, Sanborn, U.S. Geological Survey, USDA Farm Service Agency

3

DEMOGRAPHICS

DEMOGRAPHICS MAP & REPORT

PRESENTED BY

Bill Gilmore

818.949.5243

CalDRE #BRE00955844

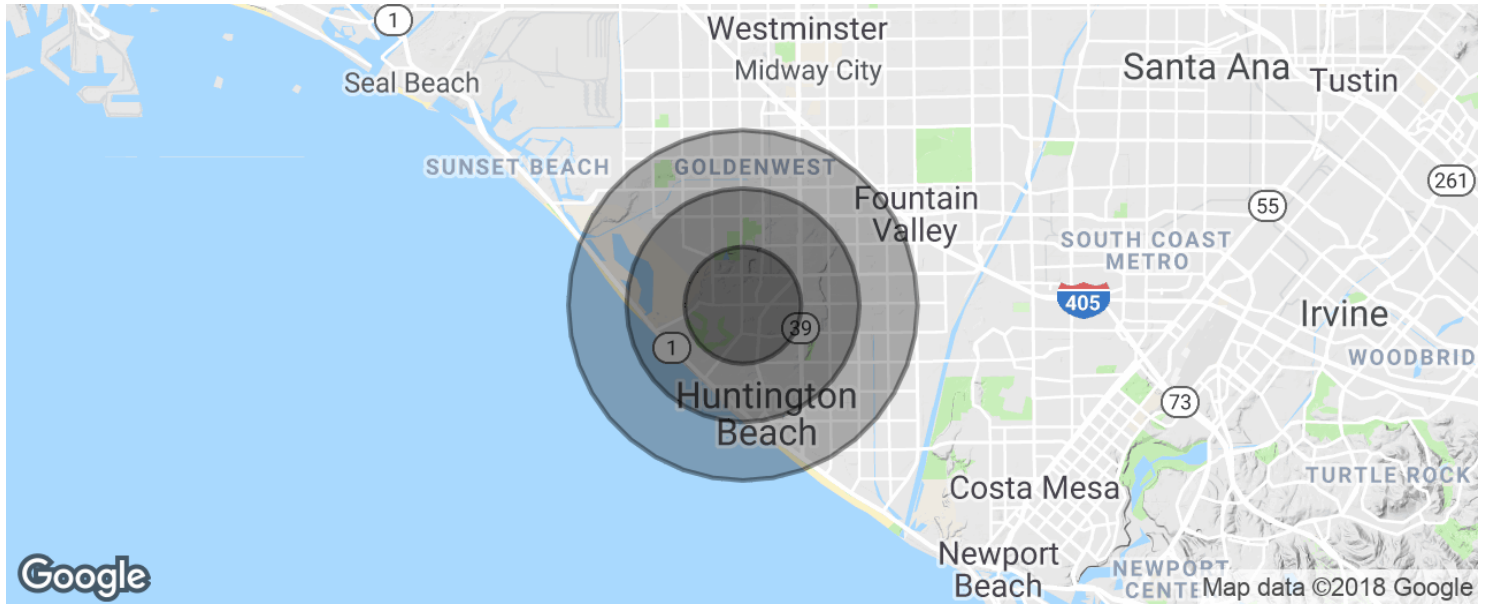
bgilmore@coldwellbanker.com



NRT

DEMOGRAPHICS

DEMOGRAPHICS MAP & REPORT



POPULATION

	1 MILE	2 MILES	3 MILES
2023 Projection	17,948	78,353	156,626
2018 Estimate	17,572	76,229	152,547
2010 Census	17,241	72,129	145,289

2018 POPULATION BY RACE

	1 MILE	2 MILES	3 MILES
White	13,599	61,706	119,949
Black	169	821	1,856
Am. Indian & Alaskan	101	581	1,235
Asian	2,967	9,847	22,707
Other	679	3,026	6,207

HOUSEHOLD INCOME

	1 MILE	2 MILES	3 MILES
2018 Average Household Income	\$141,041	\$123,917	\$118,055
2018 Median Household Income	\$110,442	\$95,914	\$92,774