

FOR SALE

MULTIFAMILY DEVELOPMENT SITE

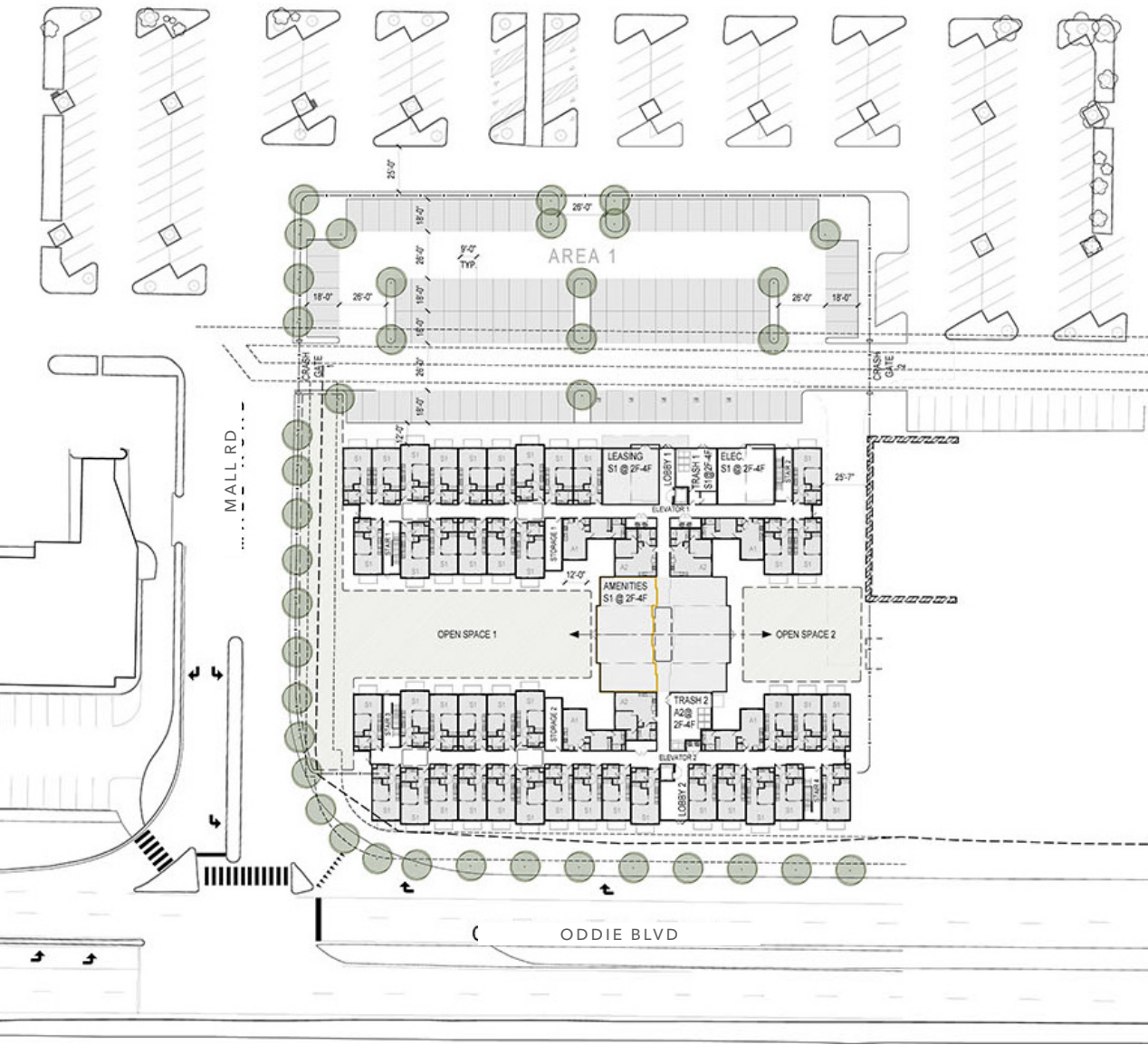
*Discover the Oddie District
Apartments in Sparks, NV*



KIDDER.COM

km Kidder
Mathews

MULTIFAMILY DEVELOPMENT SITE



Situated in the heart of an actively revitalizing area of Sparks. Oddie Apartments offers modern living with convenient access to the city's amenities. Spanning 2.34 acres, this prime location ensures that residents are never far from shopping, dining, and entertainment options.

Multifamily Development Site

Oddie Apartments - 242+/- Units

Located on Oddie Blvd in Sparks Nevada

2.34 Acres

Approved for 242+/- Apartment Units

Located in DDA Zone

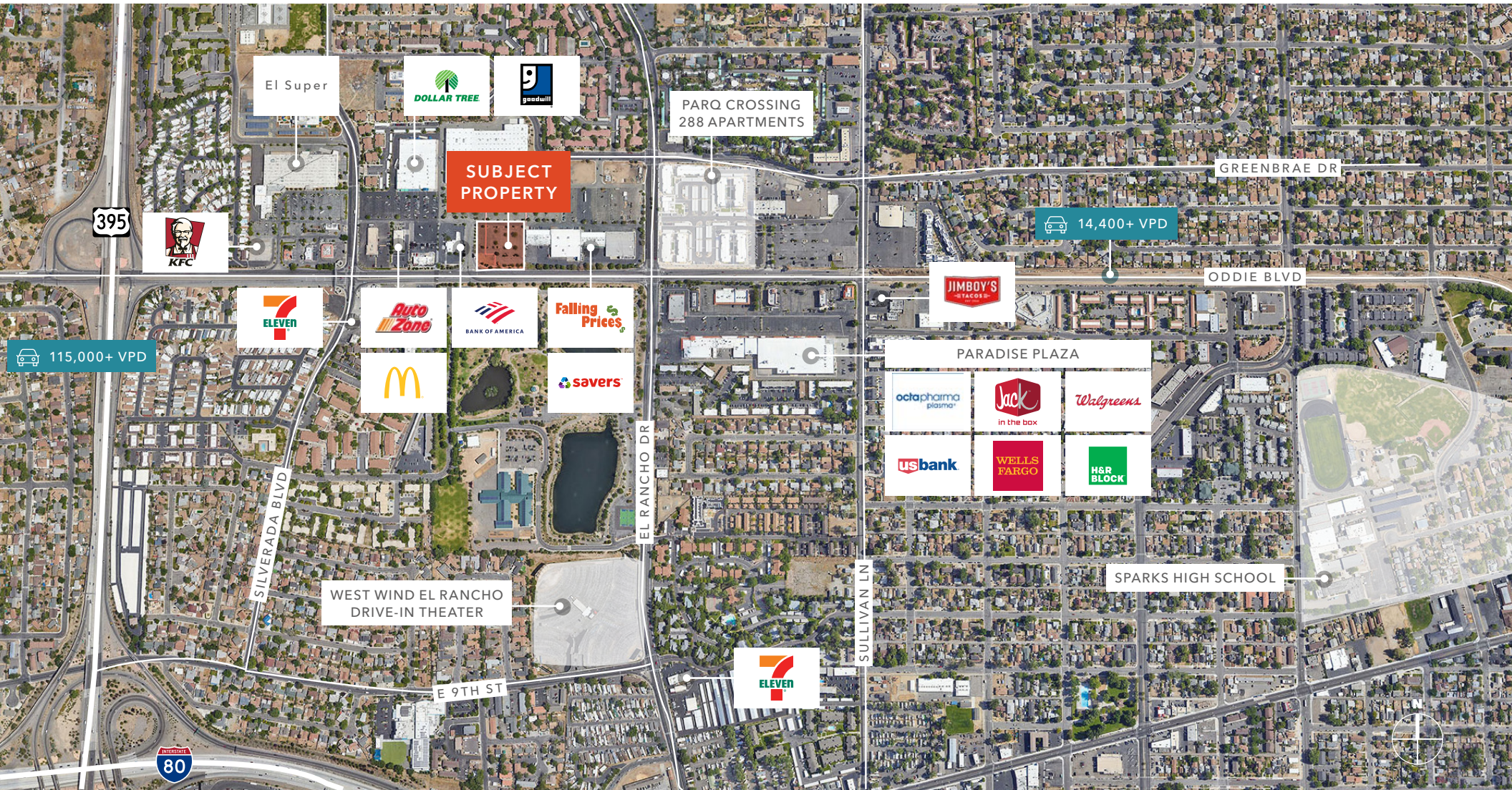
14,400

TRAFFIC COUNT ON
ODDIE BLVD

115,000

TRAFFIC COUNT ON
US 395 SOUTHBOUND

AERIAL



MULTIFAMILY DEVELOPMENT SITE

ODDIE BLVD RE-IMAGINED



Drive-In Movies

Playground

New Corridor

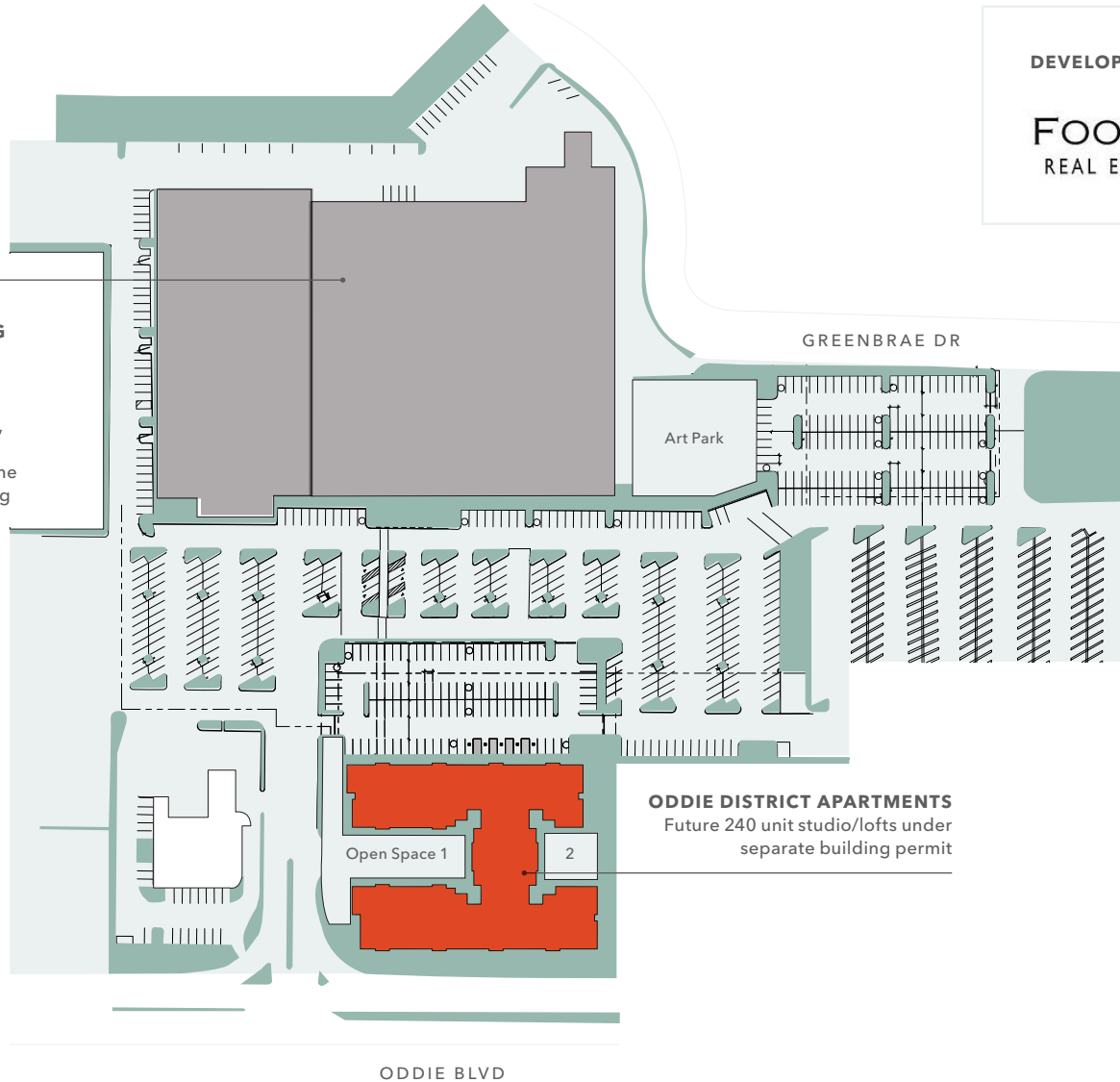
Intersection

**SUBJECT
PROPERTY**

SITE PLAN

**THE ODDIE DISTRICT
209,000 SF COMMERCIAL BLDG**

New Age Incubator experience.
A centralized project focusing on commerce, culture and community, alongside The Innovation Collective, the culture-first community and economic development company. The 209,000 square foot building is being redeveloped into a multipurpose innovation hub of work, live and creation spaces.



DEVELOPER

FOOTHILL PARTNERS
REAL ESTATE AND URBAN ECONOMICS

MULTIFAMILY DEVELOPMENT SITE

SUBJECT
PROPERTY

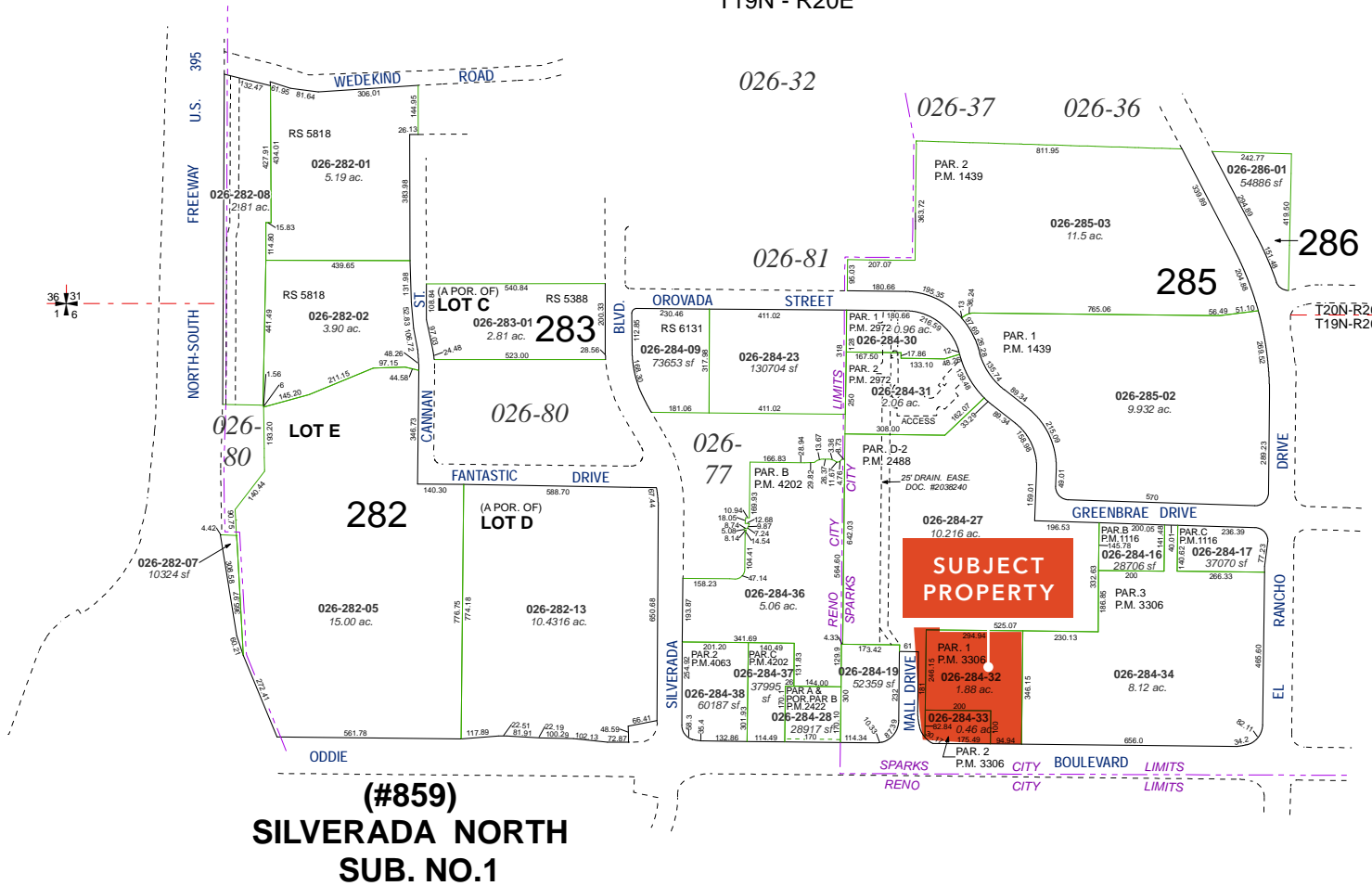


THE REDEFINED RETAIL EXPERIENCE

This multifamily development features 242+ spacious apartment units designed to cater to diverse lifestyles.

PARCEL MAP

A POR. OF THE S 1/2 OF SEC. 31
T20N - R20E
A POR. OF THE N 1/2 OF SEC. 6
T19N - R20E

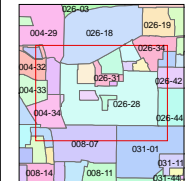
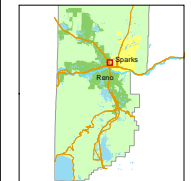


Assessor's Map Number
026-28

STATE OF NEVADA
WASHOE COUNTY
ASSESSOR'S OFFICE
1001 East Ninth Street, Building D
Reno, Nevada 89512
(775) 328-2231



Feet
0 75 150 225 300
1 inch = 300 feet



created by: **NLH 3/9/2010**
updated: EMG 4/21/15 JRA 9/14/21
area previously shown on map(s):
026-27

NOTE: This map was prepared for the use of the Washoe County Assessor for assessment and illustrative purposes only. It does not represent a survey of the premises. No liability is assumed as to the correctness of any data.



MULTIFAMILY DEVELOPMENT SITE

*For more information on
this property, please contact*

TED STOEVER
775.470.8854
ted.stoever@kidder.com
LIC N° 0054176

KIDDER.COM

This information supplied herein is from sources we deem reliable. It is provided without any representation, warranty, or guarantee, expressed or implied as to its accuracy. Prospective Buyer or Tenant should conduct an independent investigation and verification of all matters deemed to be material, including, but not limited to, statements of income and expenses. Consult your attorney, accountant, or other professional advisor.

