

For Lease - Northridge/Granada Hills Great for Fitness, Restaurant/Retail/ Medical/Office Uses

17018-17056 Devonshire St., Northridge, CA 91325

17048
AVAILABLE
±5,250 SF



MICHAEL SHARON (818) 572-4050
msharon@illicre.com • DRE#01495419

Follow us at:



5990 Sepulveda Blvd., Ste. 600 • Sherman Oaks, CA 91411 • 818.501.2212/Phone • 818.501.2202/Fax • www.illicre.com • DRE #01834124

This information has been secured from sources we believe to be reliable, but we make no representations or warranties, expressed or implied, as to the accuracy of the information. References to square footage are approximate. References to neighboring retailers are subject to change, and may not be adjacent to the vacancy being marketed either prior to, during, or after leases are signed. Lessee must verify the information and bears all risk for any inaccuracies.

For Lease - Northridge/Granada Hills Great for Fitness, Restaurant/Retail/ Medical/Office Uses

17018-17056 Devonshire St., Northridge, CA 91325

PROPERTY FEATURES

- Approx. 5,250 SF open floor plan, yoga room , office, storage, 2 restrooms
- Great co-tenancy in a multi-tenant shopping center
- New lighting
- Excellent signage and visibility on Devonshire Boulevard
- Abundant parking plus truck delivery access
- Great for fitness, restaurant, medical, retail, or office uses

AREA AMENITIES

- Heavy pedestrian and automobile traffic in trade area
- Located near a signalized intersection
- Located at Northridge
- Neighboring tenants include: Chipotle, Panda Express, Denny's, Hertz, Salon Centric, CVS, and Ralphs
- Nearby CSUN, Granada Hills Charter High School, Patrick Henry Middle School, Andasol Ave Elementary School, places of worship, restaurants, shopping, Regency Theaters, Mission College, and Mission Hills Golf Course.
- Close proximity to the 118 and 405 Freeways

RENTAL RATE

- 17048 Devonshire Street - ±5,250 SF \$1.95 PSF + \$0.80 PSF NNN



DEMOS	1 Mile	3 Mile	5 Mile
Population	24,456	194,852	612,092
Avg. HH Income	\$72,021	\$77,048	\$62,631
Daytime Pop	5,544	56,579	185,485
Traffic Count	± 67,234 cars per day		



MICHAEL SHARON (818) 572-4050

msharon@illicre.com • DRE#01495419

5990 Sepulveda Blvd., Ste. 600 • Sherman Oaks, CA 91411 • 818.501.2212/Phone • 818.501.2202/Fax • www.illicre.com • DRE #01834124

This information has been secured from sources we believe to be reliable, but we make no representations or warranties, expressed or implied, as to the accuracy of the information. References to square footage are approximate. References to neighboring retailers are subject to change, and may not be adjacent to the vacancy being marketed either prior to, during, or after leases are signed. Lessee must verify the information and bears all risk for any inaccuracies.

Follow us at:



For Lease - Northridge/Granada Hills Great for Fitness, Restaurant/Retail/ Medical/Office Uses

17018-17056 Devonshire St., Northridge, CA 91325



MICHAEL SHARON (818) 572-4050
msharon@illicre.com • DRE#01495419

5990 Sepulveda Blvd., Ste. 600 • Sherman Oaks, CA 91411 • 818.501.2212/Phone • 818.501.2202/Fax • www.illicre.com • DRE #01834124

This information has been secured from sources we believe to be reliable, but we make no representations or warranties, expressed or implied, as to the accuracy of the information. References to square footage are approximate. References to neighboring retailers are subject to change, and may not be adjacent to the vacancy being marketed either prior to, during, or after leases are signed. Lessee must verify the information and bears all risk for any inaccuracies.

Follow us at:

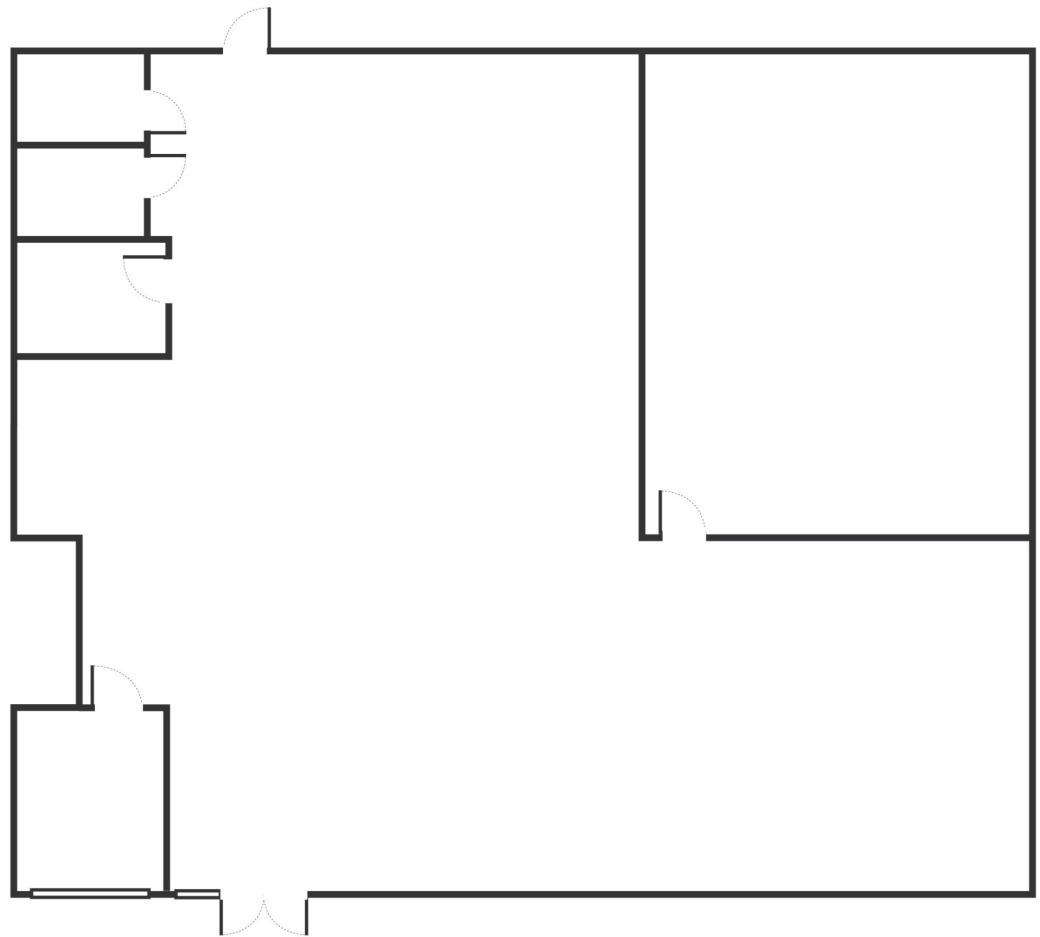


For Lease - Northridge/Granada Hills Great for Fitness, Restaurant/Retail/ Medical/Office Uses

17018-17056 Devonshire St., Northridge, CA 91325



SUITE 17048



MICHAEL SHARON (818) 572-4050

msharon@illicre.com · DRE#01495419

Follow us at:



5990 Sepulveda Blvd., Ste. 600 · Sherman Oaks, CA 91411 · 818.501.2212/Phone · 818.501.2202/Fax · www.illicre.com · DRE #01834124

This information has been secured from sources we believe to be reliable, but we make no representations or warranties, expressed or implied, as to the accuracy of the information. References to square footage are approximate. References to neighboring retailers are subject to change, and may not be adjacent to the vacancy being marketed either prior to, during, or after leases are signed. Lessee must verify the information and bears all risk for any inaccuracies.

For Lease - Northridge/Granada Hills Great for Fitness, Restaurant/Retail/ Medical/Office Uses

17018-17056 Devonshire St., Northridge, CA 91325



MICHAEL SHARON (818) 572-4050

msharon@illicre.com • DRE#01495419

Follow us at:



5990 Sepulveda Blvd., Ste. 600 • Sherman Oaks, CA 91411 • 818.501.2212/Phone • 818.501.2202/Fax • www.illicre.com • DRE #01834124

This information has been secured from sources we believe to be reliable, but we make no representations or warranties, expressed or implied, as to the accuracy of the information. References to square footage are approximate. References to neighboring retailers are subject to change, and may not be adjacent to the vacancy being marketed either prior to, during, or after leases are signed. Lessee must verify the information and bears all risk for any inaccuracies.

For Lease - Northridge/Granada Hills Great for Fitness, Restaurant/Retail/ Medical/Office Uses

17018-17056 Devonshire St., Northridge, CA 91325



MICHAEL SHARON (818) 572-4050
msharon@illicre.com • DRE#01495419



5990 Sepulveda Blvd., Ste. 600 • Sherman Oaks, CA 91411 • 818.501.2212/Phone • 818.501.2202/Fax • www.illicre.com • DRE #01834124

This information has been secured from sources we believe to be reliable, but we make no representations or warranties, expressed or implied, as to the accuracy of the information. References to square footage are approximate. References to neighboring retailers are subject to change, and may not be adjacent to the vacancy being marketed either prior to, during, or after leases are signed. Lessee must verify the information and bears all risk for any inaccuracies.

For Lease - Northridge/Granada Hills Great for Fitness, Restaurant/Retail/ Medical/Office Uses

17018-17056 Devonshire St., Northridge, CA 91325



MICHAEL SHARON (818) 572-4050
msharon@illicre.com • DRE#01495419

Follow us at:



5990 Sepulveda Blvd., Ste. 600 • Sherman Oaks, CA 91411 • 818.501.2212/Phone • 818.501.2202/Fax • www.illicre.com • DRE #01834124

This information has been secured from sources we believe to be reliable, but we make no representations or warranties, expressed or implied, as to the accuracy of the information. References to square footage are approximate. References to neighboring retailers are subject to change, and may not be adjacent to the vacancy being marketed either prior to, during, or after leases are signed. Lessee must verify the information and bears all risk for any inaccuracies.