



Accelerating success.

FOR LEASE

Greenbrier Circle Corporate Center
825 Greenbrier Circle & 1801 Sara Drive
Chesapeake, VA

Perry Frazer

Executive Vice President
+1 757 228 1833
perry.frazer@colliers.com

Pat Mugler

Executive Vice President
+1 757 228 1831
pat.mugler@colliers.com

Ricky Anderson

Executive Vice President
+ 1 757 217 1892
ricky.anderson@colliers.com

Property Owned By:

HERITAGE

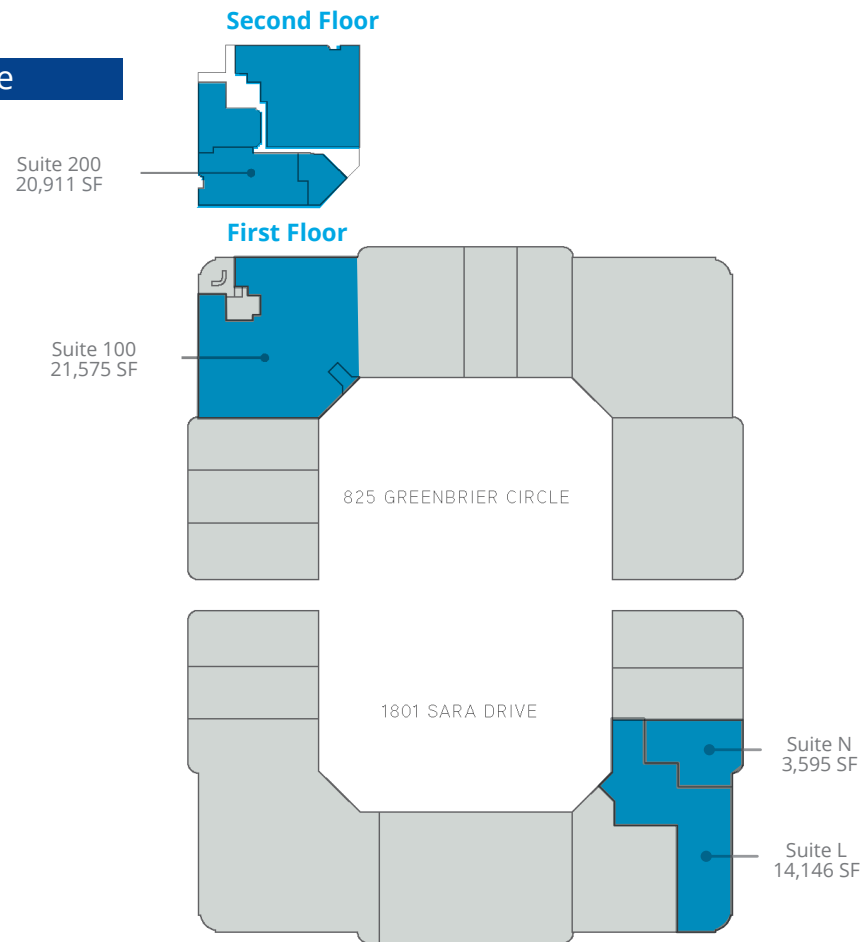
Features & Amenities

- Flexible floor plans featuring professional office and warehouse space
- Corporate park atmosphere featuring hotels, convention center, and restaurants in walking distance
- Dock loading screened from public view
- Easy access to I-64 and other major roads
- Abundant parking with rear dock loading
- Suites available ranging from $\pm 3,595$ SF up to $\pm 42,486$ SF

Specifications

| | |
|----------------|---|
| Total RBA | 232,671 |
| Stories | Two-story Flex R&D |
| Available | $\pm 3,595$ - 42,486 RSF |
| Ceiling Height | 22' 0" - 24'0" |
| Construction | Masonry |
| Built | 1981 |
| Power | 800 amp/480/277 volt service |
| Loading | Dock high |
| Location | Centrally located in the heart of Greenbrier, just minutes away from I-64 |

Available

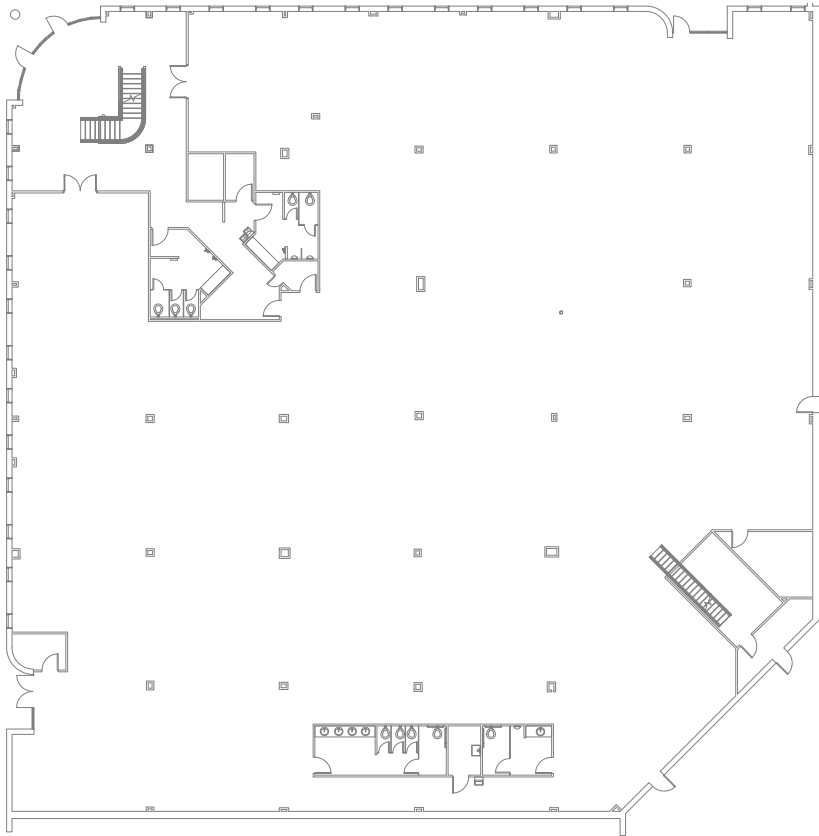


Property Owned By:

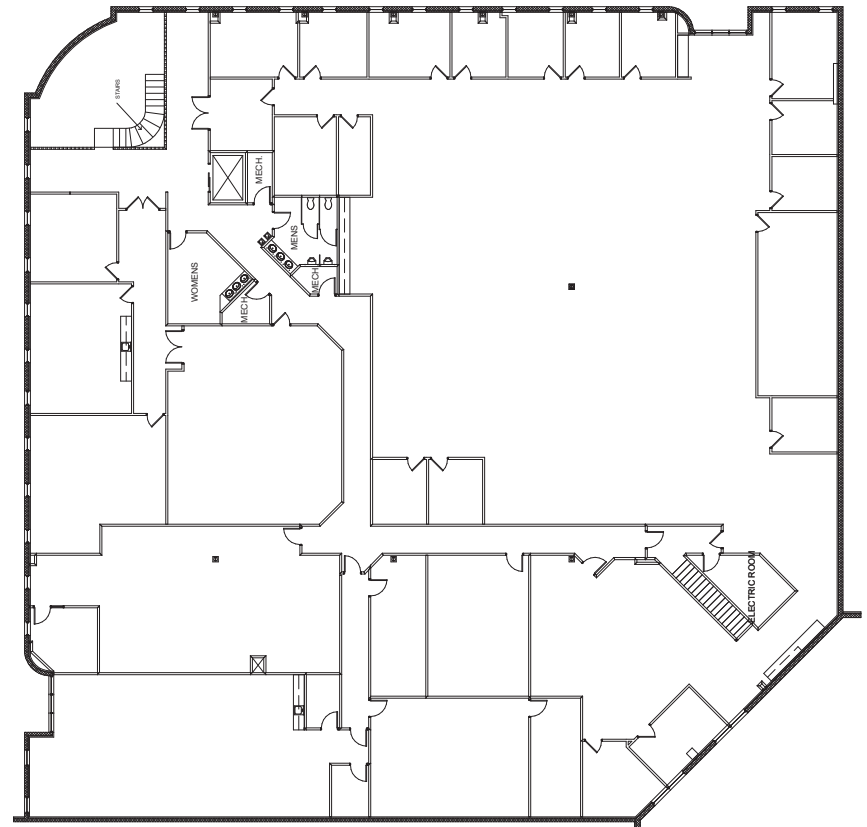


825 Greenbrier Circle

First Floor | Suite 100: 21,575 SF Available



Second Floor | Suite 200: 20,911 SF Available

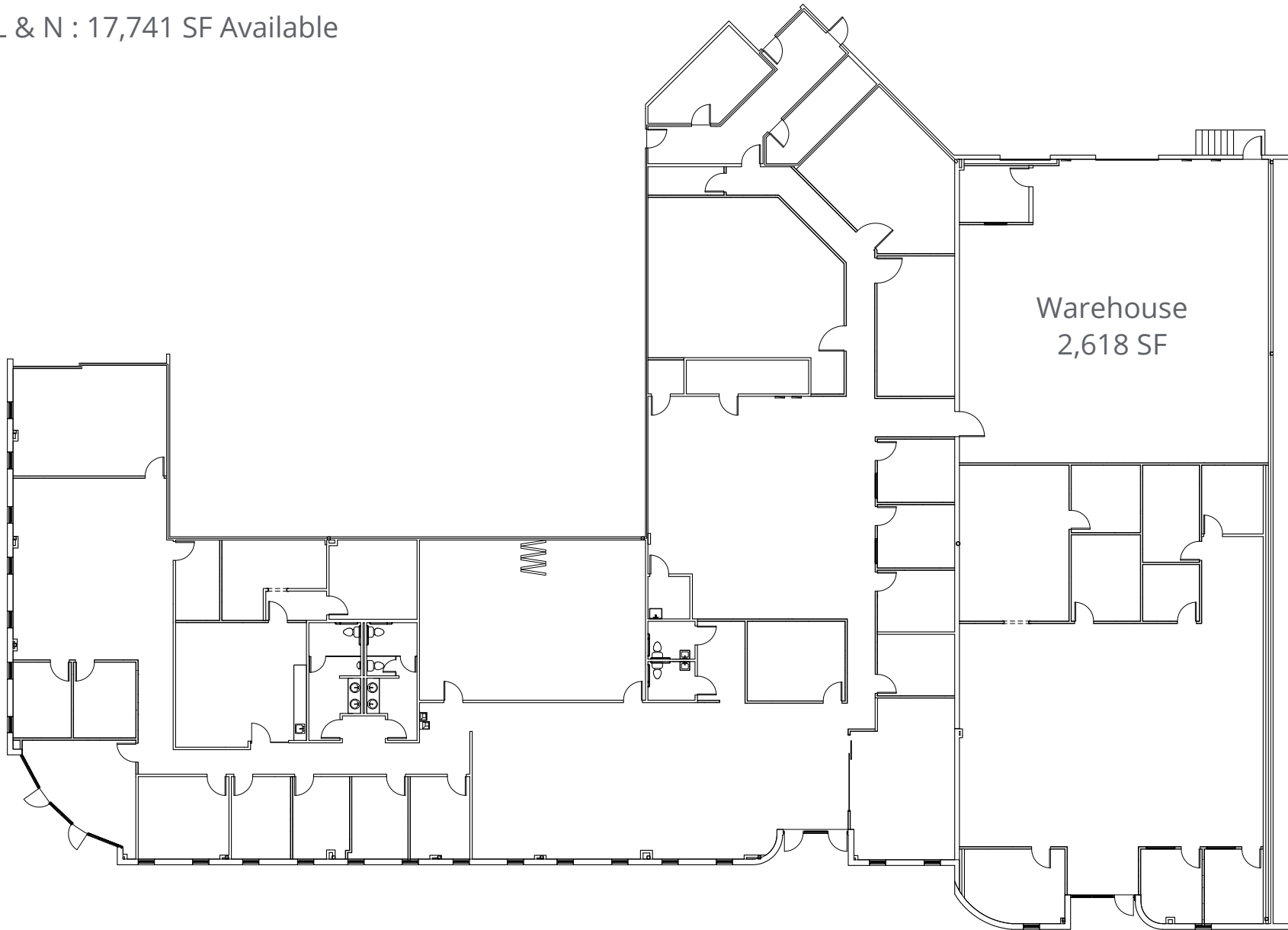


Property Owned By:



1801 Sara Drive

Suites L & N : 17,741 SF Available



Property Owned By:

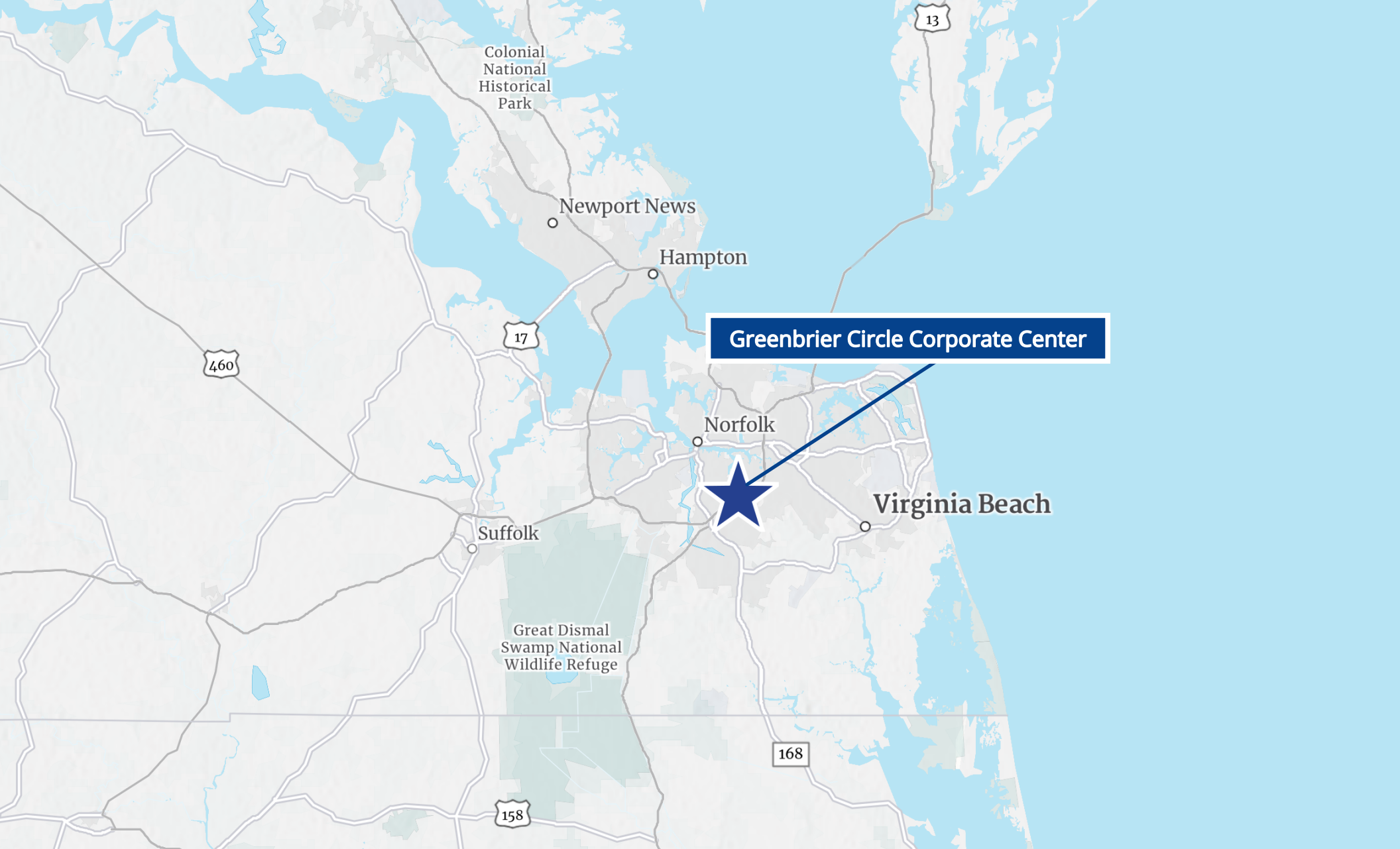




Greenbrier Circle Corporate Center



Greenbrier Circle Corporate Center



Perry Frazer

Executive Vice President
+1 757 228 1833
perry.frazer@colliers.com

Pat Mugler

Executive Vice President
+1 757 228 1831
pat.mugler@colliers.com

Ricky Anderson

Executive Vice President
+ 1 757 217 1892
ricky.anderson@colliers.com

150 West Main Street
Suite 1100
Norfolk, VA 23510
P: +1 757 490 3300

