

1865

SECOND AVENUE

CORNER OF 96TH STREET
UPPER EAST SIDE



AKSR
**RETAIL SPACE
FOR LEASE**
Emmanuel Chera Nathan Aballi
8.614.1731 917.915.8763
chera@ksr.com naballi@ksr.com

AKSR
**RETAIL SPACE
FOR LEASE**
Emmanuel Chera Nathan Aballi
8.614.1731 917.915.8763
chera@ksr.com naballi@ksr.com



1865

SECOND AVENUE

CORNER OF 96TH STREET
UPPER EAST SIDE

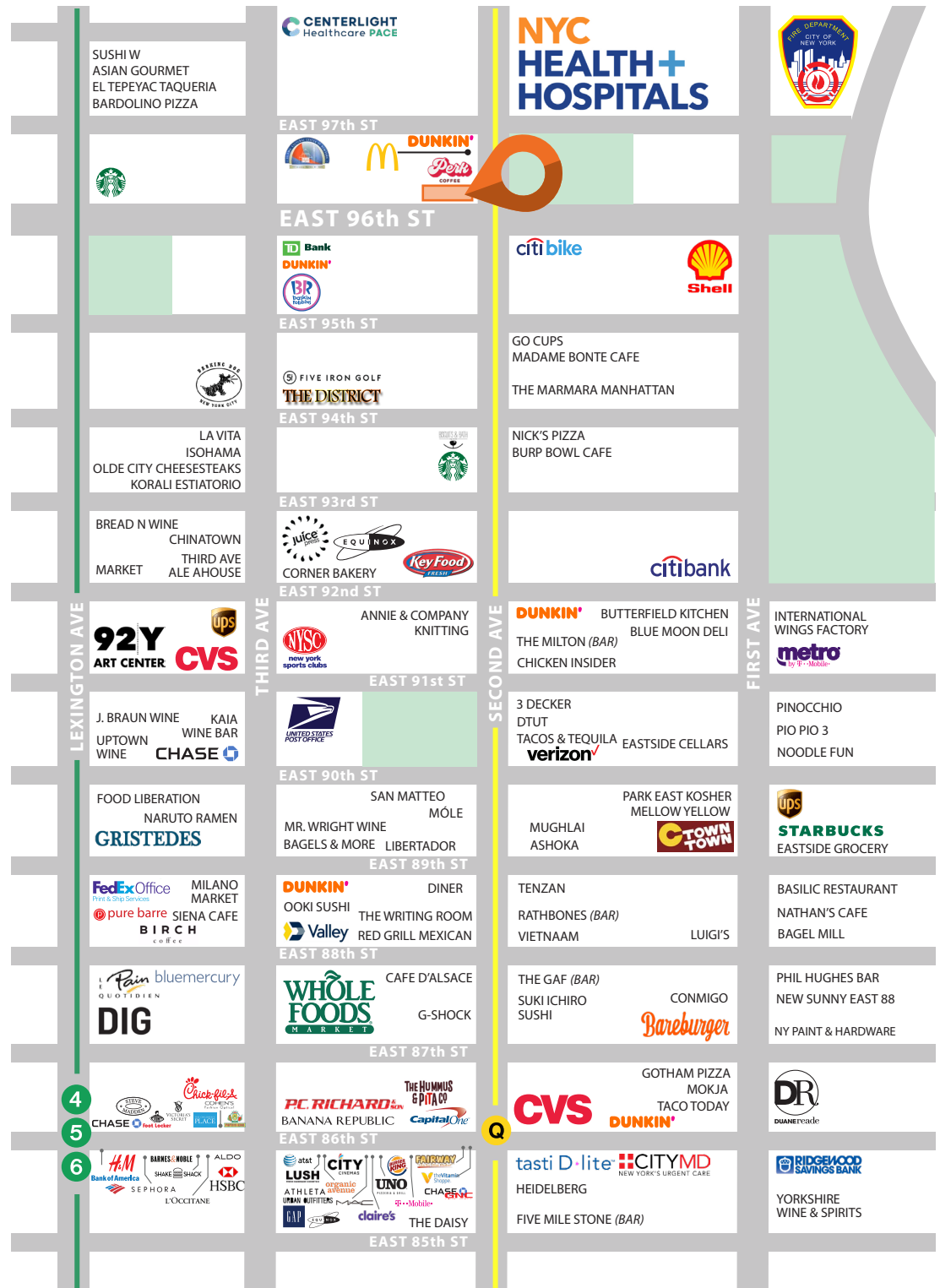
SIZE: 1,800 SF Ground Floor
FRONTAGE: 82' wraparound
CEILING HEIGHT: 17'
POSSESSION: Immediate
ASKING RENT: Upon Request
TRANSPORTATION: **Q 6**

HIGHLIGHTS:

- Formerly Capital One bank
- All uses considered
- Steps from the Second Avenue subway line
- Across the street from Metropolitan Hospital
- High foot traffic area in dense residential neighborhood
- Neighboring tenants include: *Dunkin'*, *McDonald's*, *Perk Coffee*, *Azure Nails & Spa*, *Starbucks*, *Key Food*, *Madame Bonte Cafe*, *Go Cups*, *Merrion Square Pu*, *Soledad*, *NYC Health + Hospitals/Metropolitan: ER*



All information supplied in this marketing presentation and/or flyer is from sources deemed reliable and is furnished subject to errors, omissions, modifications, removal of listings from sale/lease and to any listing condition. Any square footage, dimensions, floor plans and/or technical data set forth are approximations and are subject to further elaboration/confirmation.

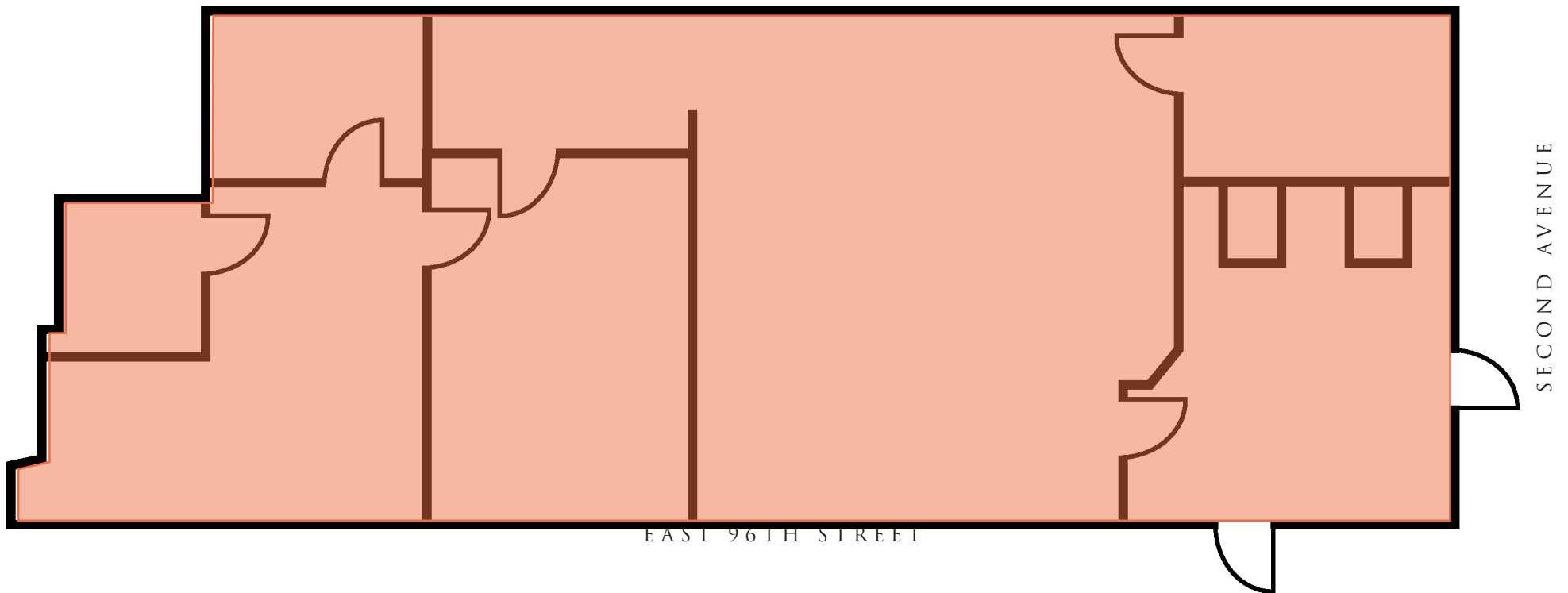


1865

SECOND AVENUE

FLOOR PLANS

GROUND FLOOR
1,800 SF



All information supplied in this marketing presentation and/or flyer is from sources deemed reliable and is furnished subject to errors, omissions, modifications, removal of listings from sale/lease and to any listing condition. Any square footage, dimensions, floor plans and/or technical data set forth are approximations and are subject to further elaboration/confirmation.

1865

SECOND AVENUE

CORNER OF 96TH STREET
UPPER EAST SIDE

FOR MORE INFORMATION,
PLEASE CONTACT:

SAMUEL CHERA

718.614.1731 | SChera@ksrny.com

NATHAN ABALLI

917.915.8763 | NAballi@ksrny.com

