



FOR LEASE

713 N Shoreline Blvd

MOUNTAIN VIEW, CA



±1,500 SF R&D Office Space

NEW IMPROVEMENTS, front unit

FLEXIBLE workspace

OPEN collaborative break room

HIGH CEILING exposed beams, polished concrete floors, skylights, glass roll-up door and glass on two sides

NORTH SHORELINE location and close to amenities

ONE MILE from Highways 101 and 85

CLOSE to Caltrain

ON-SITE parking; mature landscaping

05/01/24

AVAILABLE

\$5.50

PSF GROSS

100%

HVAC

DAVE GEISSBERGER

408.588.2338

dave.geissberger@kidder.com

LIC N° 01401887

KIDDER.COM

This information supplied herein is from sources we deem reliable. It is provided without any representation, warranty, or guarantee, expressed or implied as to its accuracy. Prospective Buyer or Tenant should conduct an independent investigation and verification of all matters deemed to be material, including, but not limited to, statements of income and expenses. Consult your attorney, accountant, or other professional advisor.

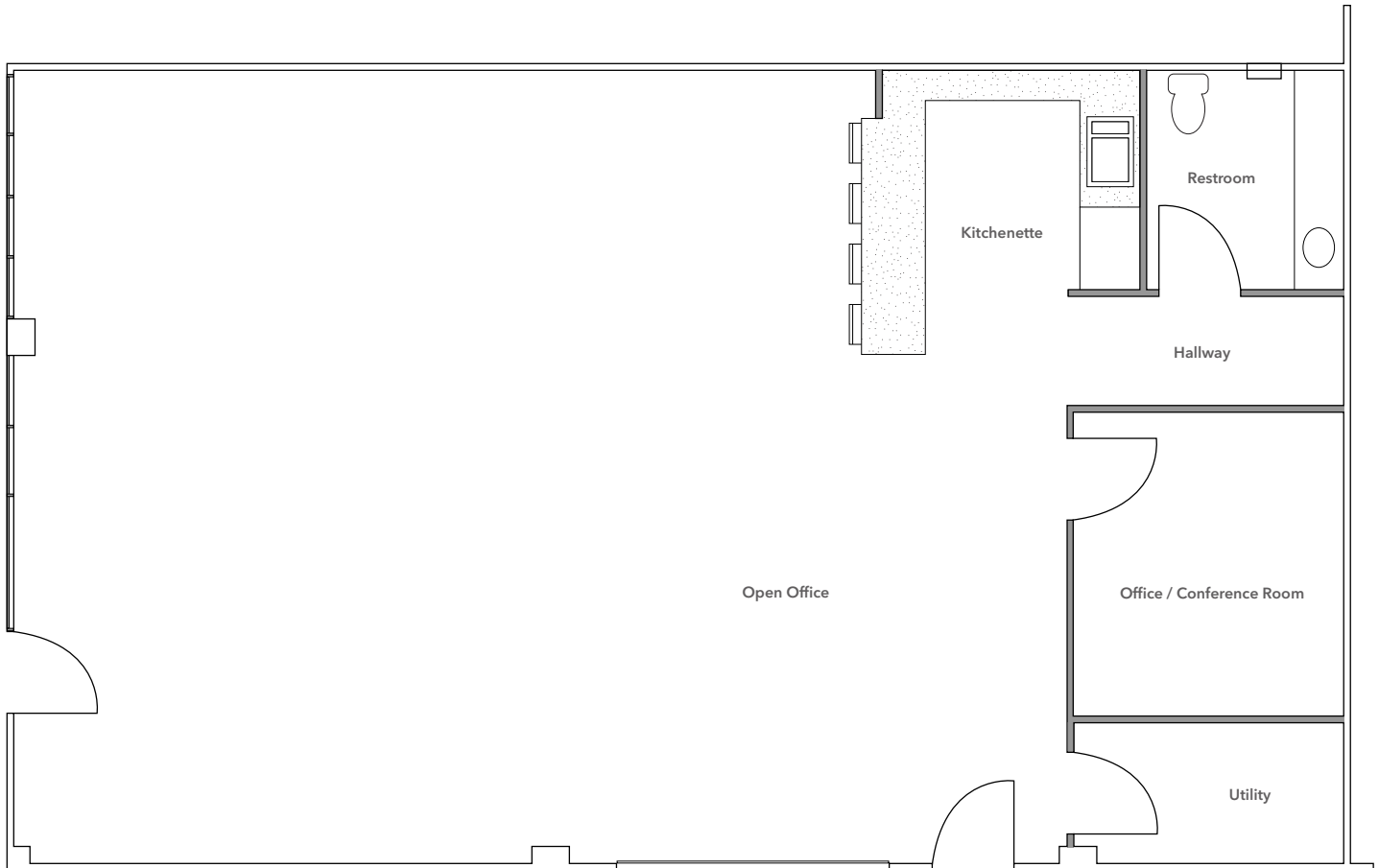
Kidder Mathews

FOR LEASE

713 N Shoreline Blvd

MOUNTAIN VIEW, CA

Suite 713 | ±1,500 SF R&D Office Space



Glass Roll-Up Door

FLOOR PLAN
NOT TO SCALE



KIDDER.COM

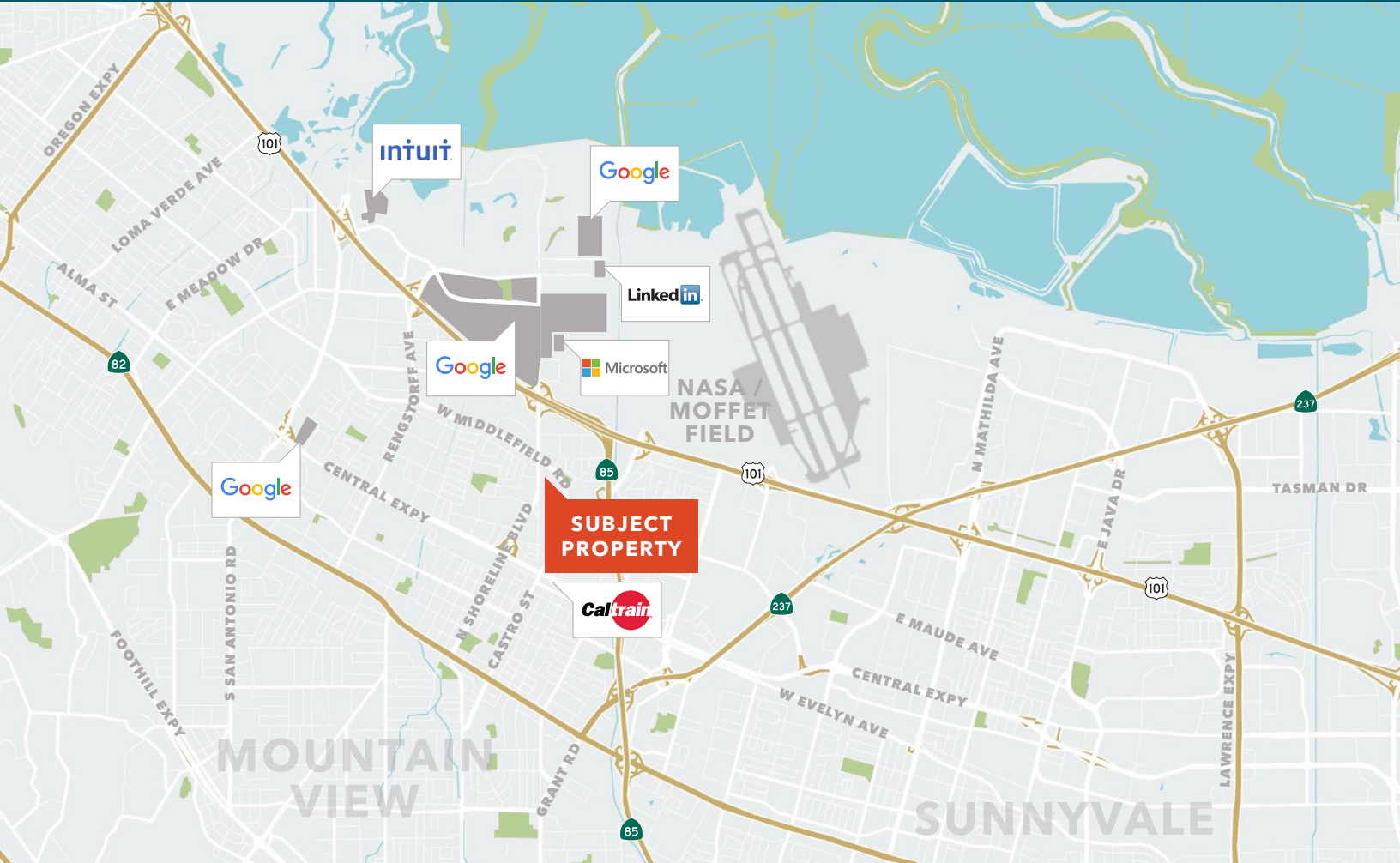
This information supplied herein is from sources we deem reliable. It is provided without any representation, warranty, or guarantee, expressed or implied as to its accuracy. Prospective Buyer or Tenant should conduct an independent investigation and verification of all matters deemed to be material, including, but not limited to, statements of income and expenses. Consult your attorney, accountant, or other professional advisor.



FOR LEASE

713 N Shoreline Blvd

MOUNTAIN VIEW, CA



DRIVING DISTANCE FROM SUBJECT

Caltrain Mountain View Station	5 minutes
Palo Alto	10 minutes
San Jose International Airport	15 minutes
Downtown San Jose	20 minutes
San Francisco International Airport	25 minutes

KIDDER.COM

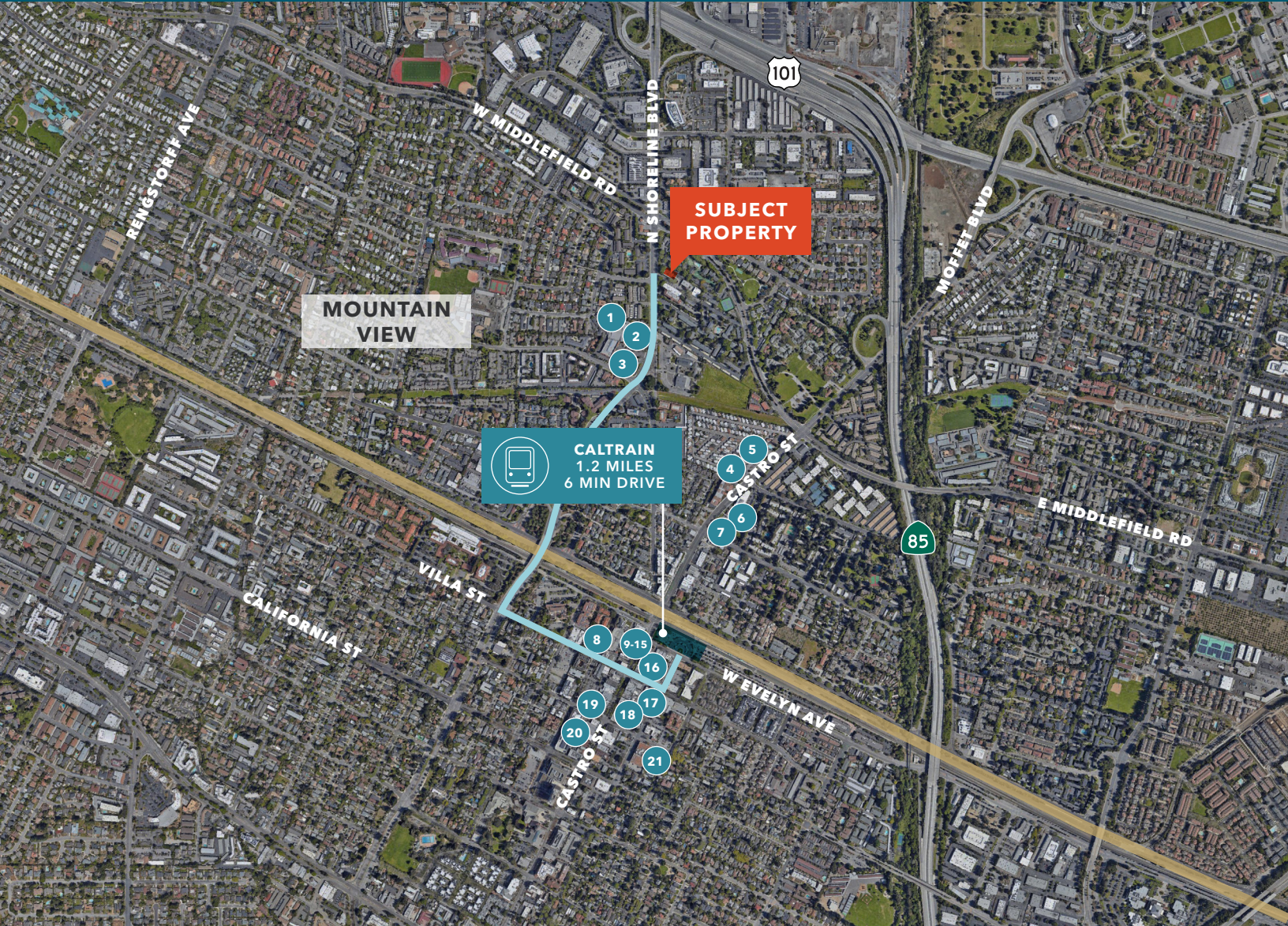
This information supplied herein is from sources we deem reliable. It is provided without any representation, warranty, or guarantee, expressed or implied as to its accuracy. Prospective Buyer or Tenant should conduct an independent investigation and verification of all matters deemed to be material, including, but not limited to, statements of income and expenses. Consult your attorney, accountant, or other professional advisor.

 **Kidder
Mathews**

FOR LEASE

713 N Shoreline Blvd

MOUNTAIN VIEW, CA



EAT + DRINK

- | | | | |
|--------------------|--------------------------|--------------------|-----------------------|
| 1 Safeway | 7 Shana Thai | 12 Bushido | 17 Fiesta Del Mar Too |
| 2 Momoya Sushi | 8 Chez TJ | 13 Asian Box | 18 Don Giovanni |
| 3 Jack in the Box | 9 Little Sheep Mongolian | 14 Doppio Zero | 19 Bonchon Chicken |
| 4 Chef Zhao Bistro | 10 Vaso Azzurro | 15 Blue Line Pizza | 20 Crepevine |
| 5 Los Portales | 11 Oren's Hummus | 16 Eureka! | 21 Sushi Tomi |

KIDDER.COM

This information supplied herein is from sources we deem reliable. It is provided without any representation, warranty, or guarantee, expressed or implied as to its accuracy. Prospective Buyer or Tenant should conduct an independent investigation and verification of all matters deemed to be material, including, but not limited to, statements of income and expenses. Consult your attorney, accountant, or other professional advisor.

