



Prime Land Opportunity in Sacramento – 109.18 AC for Sale

8285 14th Ave & SE of Jackson Rd, Sacramento, CA 95826



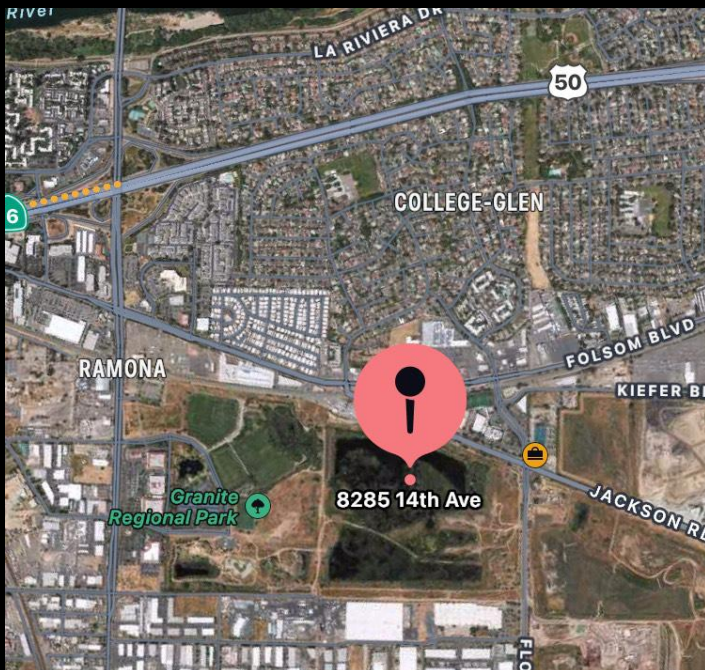
- ◇ **Price:** \$20,000,000
- ◇ **Lot Size:** 109.18 Acres
- ◇ **Zoning:** OB-SWR-PUD
(Various lots with different zoning allocations)
- ◇ **Parcel Options:** Available

Key Highlights

- ✓ **Easy Access to Major Highways/Roads** – Near Folsom Blvd
- ✓ **Diverse Investment Potential** – Commercial, residential
- ✓ **Thriving Neighborhood** – Close to Sacramento's growth
- ✓ **Proximity to Parks & Green Space** – Adjacent to **Granite Regional Park**
- ✓ **Flexible Development Opportunities** – Multiple zoning classifications
- ✓ **Growing Community** – Median home price: **\$349,300** | Estimated population: **40,847**

Neighborhood Insights

- 📍 **Estimated Population:** 40,847
- 📍 **Median Age:** 32.8
- 📍 **Median Home Price:** \$349,300
- 📍 **Growing Workforce:** 84% White Collar, 16% Blue Collar
- 📍 **Annual Residential Turnover:** 19.38%



Overview

This expansive land in a fast-growing Sacramento area presents unlimited development possibilities, from commercial projects to industrial investments. Don't miss this rare opportunity to acquire prime real estate in a strategic location. Reach out to us via the contact info below and we look forward to helping you make your dreams come true.

Nina Kovalyov

✉ **Email:** ninakovalyov@sbcglobal.net

☎ **Phone:** (916) 402-1714

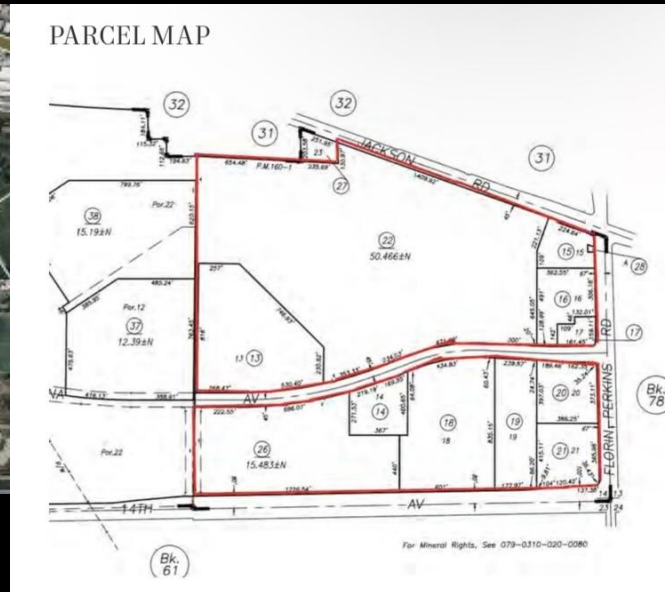
🏢 **Capitol Commercial Real Estate & Business Sales**

LIC# 01718290


Available Parcels & Pricing


CIAL

Parcel Size	Zoning	Price
2.81 AC	OB-SWR-PUD	\$450,000
8.10 AC	OB-SWR-PUD	\$850,000
5.30 AC	OB-SWR-PUD	\$850,000
3.59 AC	OB-SWR-PUD	\$850,000
3.46 AC	OB-SWR-PUD	\$850,000
0.92 AC	C2-SWR-PUD	\$450,000
3.24 AC	OB-SWR-PUD	\$850,000
11.37 AC	OB-SWR-PUD	\$850,000
15.48 AC	A-OS-SWR-PUD	\$850,000
50.47 AC	A-OS-SWR-PUD	\$850,000
0.004 AC	OB-SWR-PUD	\$30,000
TOTAL (109.18 AC)	Mixed Zoning	



Nina Kovalyov

 **Email:** ninakovalyov@sbcglobal.net

 **Phone:** (916) 402-1714

 **Capitol Commercial Real Estate & Business Sales**

LIC# 01718290