




# For lease

1811 Lucerne Terrace

2,300 ± SF medical/office space available

 **JLL** SEE A BRIGHTER WAY



## Opportunity Details



Building can be available 4/1/2026



Building size:  $\pm$  2,300 SF



Offered at \$35.00/SF NNN



Includes waiting room/reception, 4 exam rooms, storage, office, break room, and 3 restrooms



Rare opportunity for freestanding, medical-office building



Free surface parking; 5.6/1,000 SF ratio



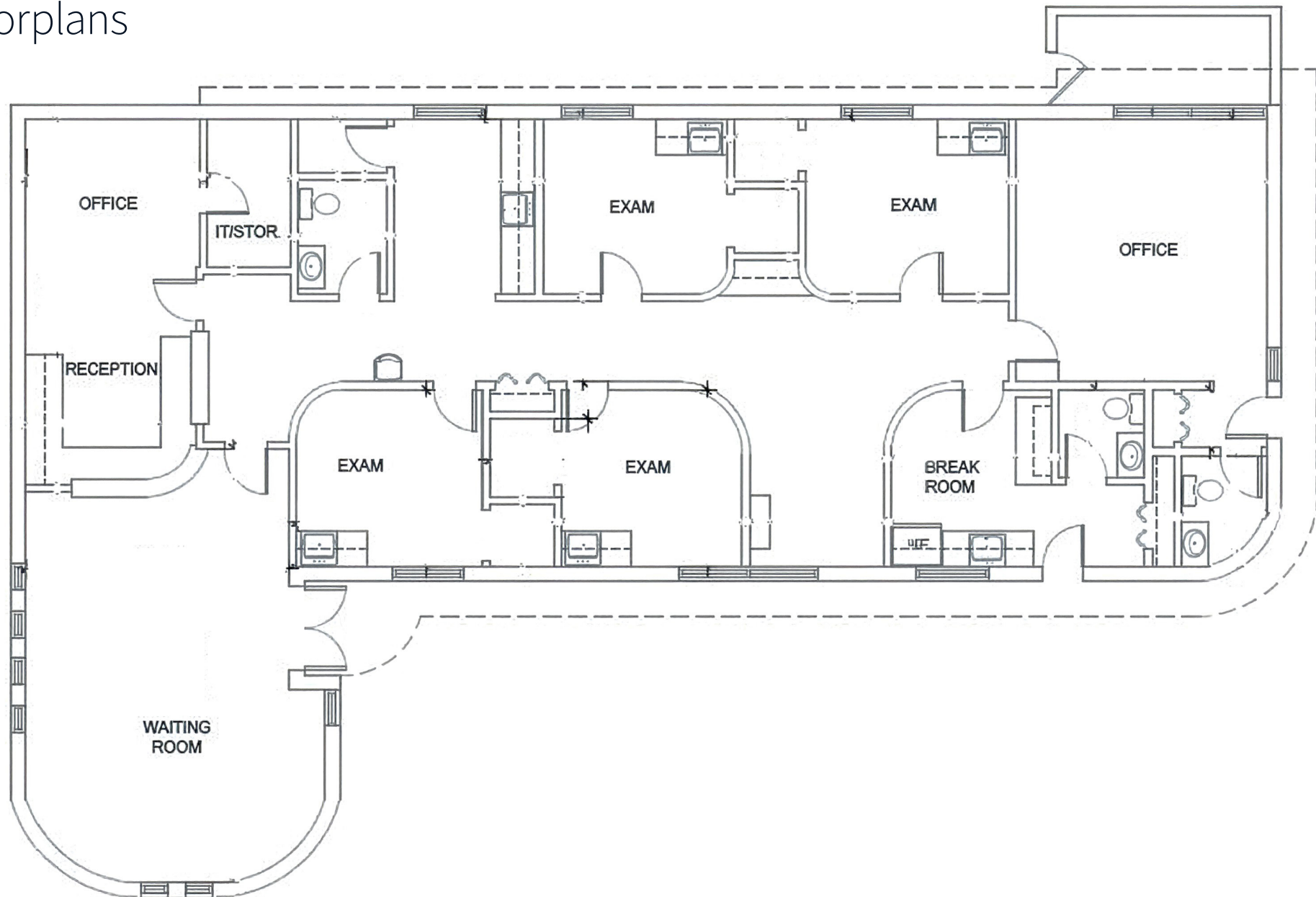
On the southern-edge of the main campus of Orlando Health



Easy access to main Central Florida arterials including Orange Avenue, I-4 and SR-408

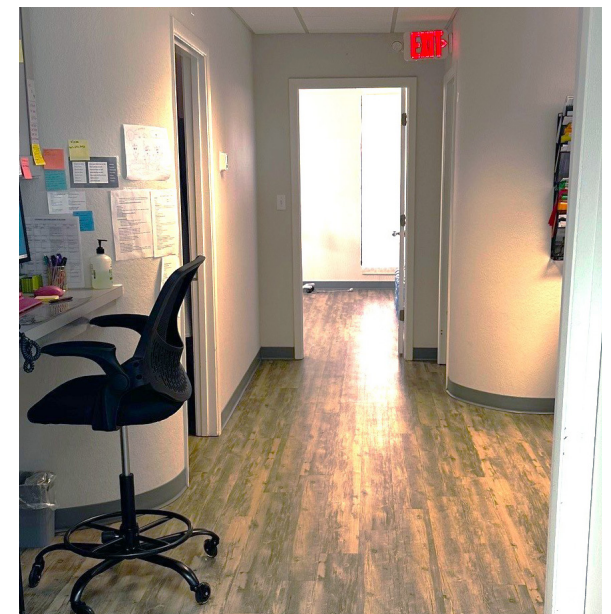


# Floorplans





1811 Lucerne Terrace / Orlando



[jll.com/orlando](https://jll.com/orlando)

## Contact Information:

### **Jamie Barati**

Senior Vice President  
+1 407 930 1803  
[jamie.barati@jll.com](mailto:jamie.barati@jll.com)

### **John Worrell**

Senior Vice President  
+1 407 930 1809  
[john.worrell@jll.com](mailto:john.worrell@jll.com)