

PROPERTY FOR SALE / LEASE



L. MASON CAPITANI  
CORFAC INTERNATIONAL

# Oakland Mall Outlet

506 West 14 Mile Road Troy, MI 48083

## PROPERTY SUMMARY



### Property Highlights

- High Visibility/Traffic Location
- Excellent Owner/User Opportunity
- Oakland Mall Outlet
- Up to 4,048 SF Available
- Quick Access to I-75
- General Business Zoning
- Medical/Dental/Office Use Possible



### FOR MORE INFORMATION:

**Aaron Smith**

Vice President  
248.637.3515  
asmith@lmcap.com

**Michael Elle**

Sales Associate  
248.637.3526  
melle@LMCap.com



CONNECT WITH US

248.637.9700 | [www.LMCap.com](http://www.LMCap.com)

Information contained herein was obtained from sources deemed to be reliable but is not guaranteed. Subjects to prior sales, changes of price or withdrawal.

PROPERTY FOR SALE / LEASE

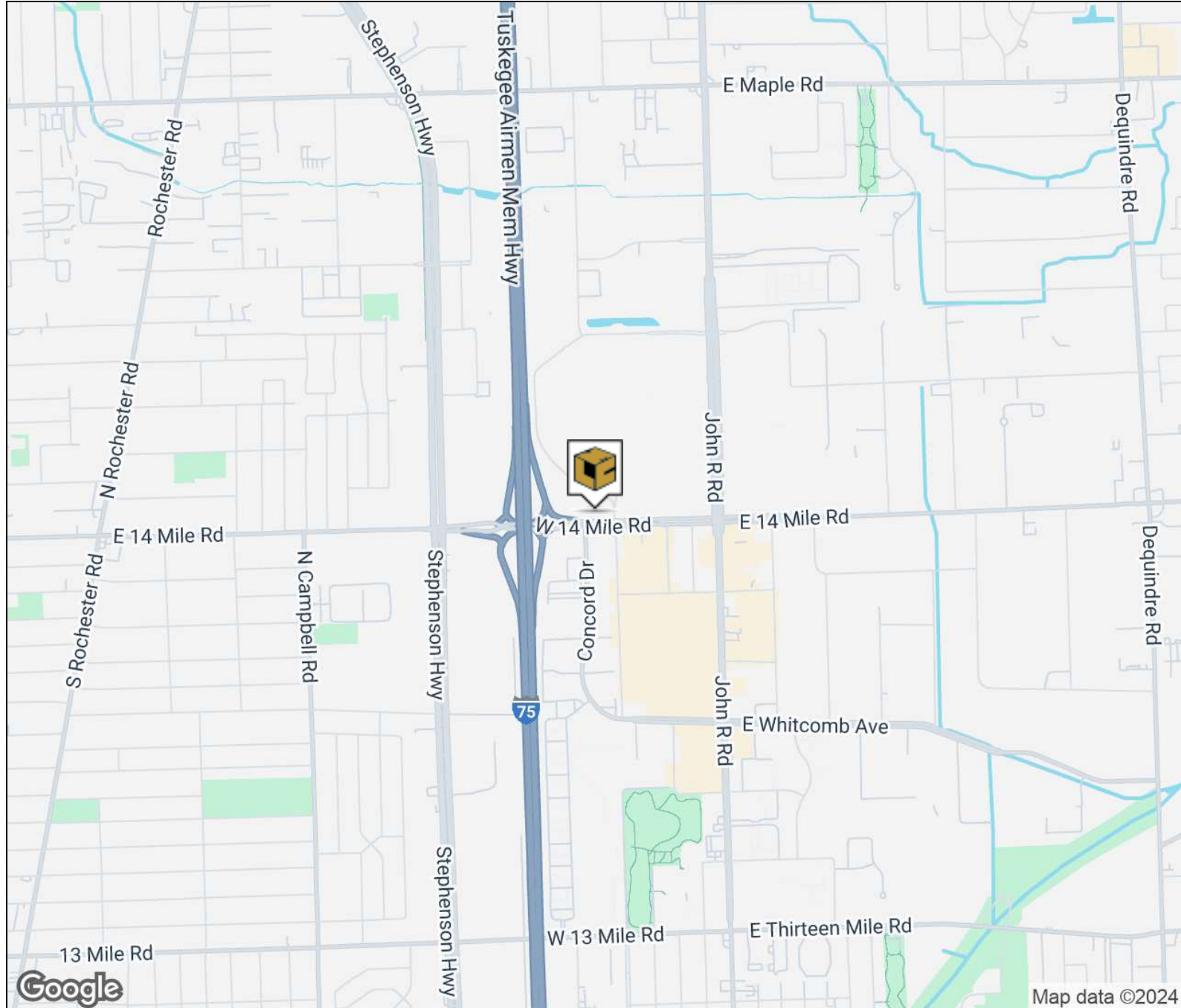
# Oakland Mall Outlet

506 West 14 Mile Road Troy, MI 48083



L. MASON CAPITANI  
CORFAC INTERNATIONAL

## LOCATION MAP



### FOR MORE INFORMATION:

**Aaron Smith**

Vice President  
248.637.3515  
asmith@lmcap.com

**Michael Elle**

Sales Associate  
248.637.3526  
melle@LMCap.com



CONNECT WITH US

248.637.9700 | [www.LMCap.com](http://www.LMCap.com)

Information contained herein was obtained from sources deemed to be reliable but is not guaranteed. Subjects to prior sales, changes of price or withdrawal.

PROPERTY FOR SALE / LEASE



L. MASON CAPITANI  
CORFAC INTERNATIONAL

# Oakland Mall Outlet

506 West 14 Mile Road Troy, MI 48083

## RETAIL PROPERTY DETAILS

### Location Information

Building Name	Oakland Mall Outlet
Street Address	506 West 14 Mile Road
City, State, Zip	Troy, MI 48083
County	Oakland
Nearest Highway	I-75
Location Description	NW Corner of Elliott Avenue & 14 Mile Road

### Building Information

Building Size	15,154 SF
Building Class	-
Tenancy	Multiple
Number of Floors	1
Year Built	1972
Gross Leasable Area	15,154 SF
Number of Buildings	-

Sale Price	<b>\$3,300,000</b>
Price/SF	<b>\$217.76/SF</b>

Lease Rate	<b>\$20.00 SF/yr NNN</b>
------------	--------------------------

### Property Information

Property Type	Retail
Property Subtype	Street Retail
Lot Size	1 Acre
Zoning	General Business
APN #	20-35-400-023
Property Description	Free-standing retail building with high traffic/high visibility location in Oakland Mall Outlet. Quick access to I-75, medical/dental/office use possible.

### Parking & Transportation

Parking Type	Surface
Parking Ratio	6.22

### Available Space

Unit 514 - 2,024 SF	\$20.00 NNN
Unit 516 - 2,024 SF	\$20.00 NNN
Unit 514/516 - 4,048 SF	\$20.00 NNN

#### FOR MORE INFORMATION:

#### Aaron Smith

Vice President  
248.637.3515  
asmith@lmcap.com

#### Michael Elle

Sales Associate  
248.637.3526  
melle@LMCap.com



CONNECT WITH US

248.637.9700 | [www.LMCap.com](http://www.LMCap.com)

Information contained herein was obtained from sources deemed to be reliable but is not guaranteed. Subjects to prior sales, changes of price or withdrawal.

PROPERTY FOR SALE / LEASE

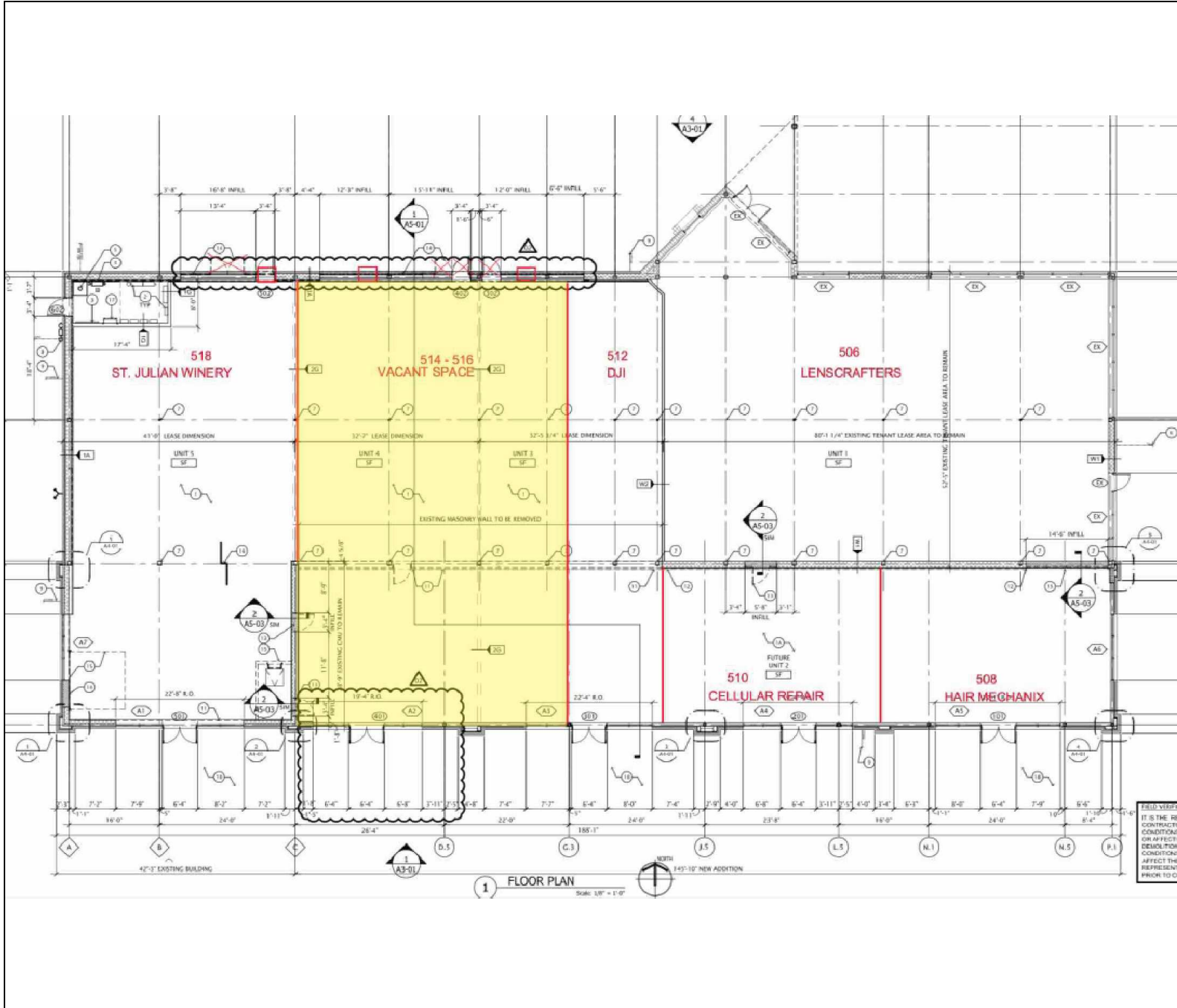


L. MASON CAPITANI  
CORFAC INTERNATIONAL

# Oakland Mall Outlet

506 West 14 Mile Road Troy, MI 48083

## FLOOR PLAN



### FOR MORE INFORMATION:

**Aaron Smith**  
Vice President  
248.637.3515  
asmith@lmcap.com

**Michael Elle**  
Sales Associate  
248.637.3526  
melle@LMCap.com



CONNECT WITH US

248.637.9700 | [www.LMCap.com](http://www.LMCap.com)

Information contained herein was obtained from sources deemed to be reliable but is not guaranteed. Subjects to prior sales, changes of price or withdrawal.

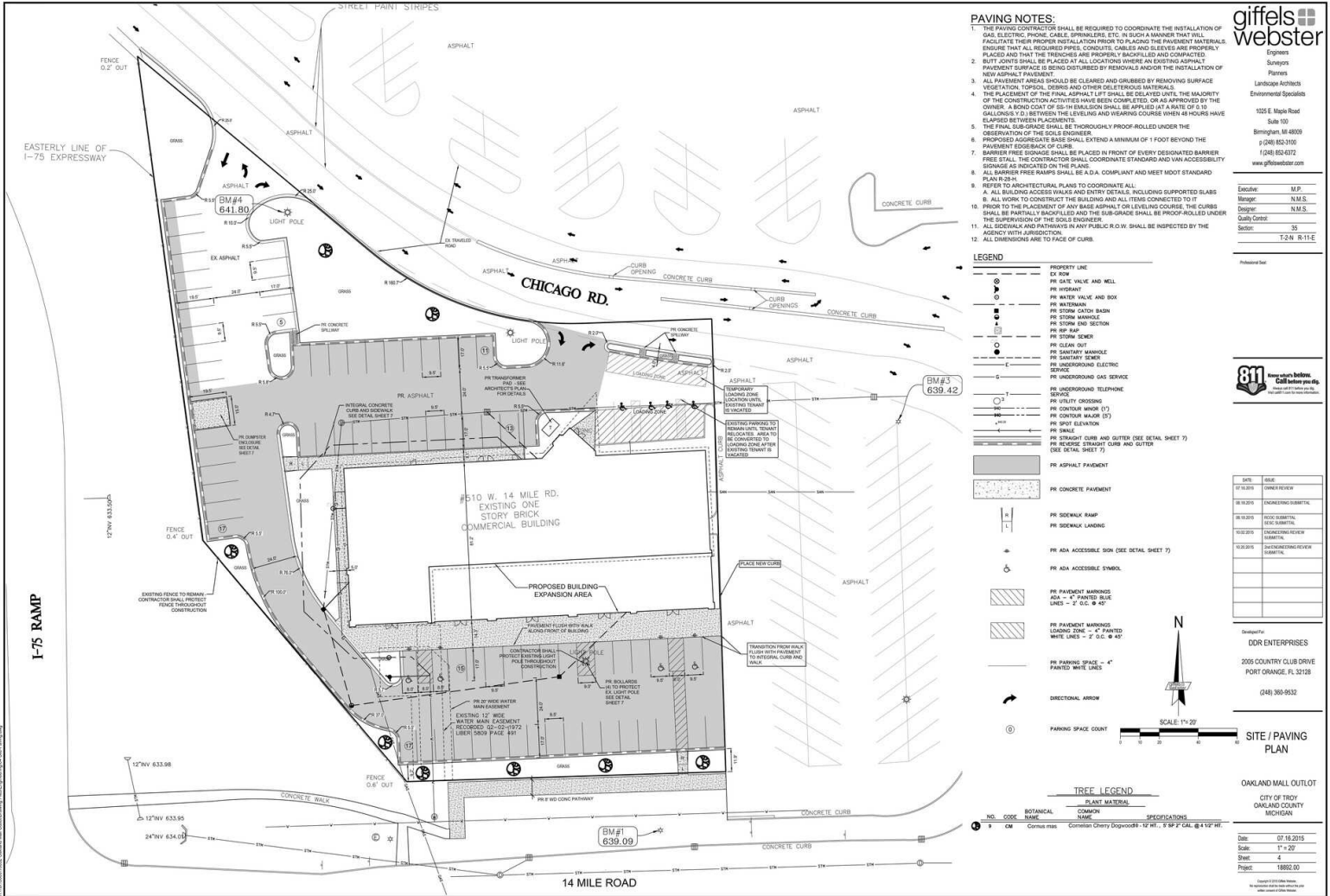


# Oakland Mall Outlet

506 West 14 Mile Road Troy, MI 48083



## SITE PLAN



**giffels webster**  
Engineers  
Surveyors  
Planners  
Landscape Architects  
Environmental Specialists  
1020 E. Maple Road  
Suite 100  
Birmingham, MI 48009  
P: (248) 852-3100  
F: (248) 852-4372  
www.giffelswebster.com

Designer: M.P.  
Manager: N.M.S.  
Designer: N.M.S.  
Quality Control:  
Scale: 35  
T.S.N. B.11-E



**DDP ENTERPRISES**  
2020 COUNTRY CLUB DRIVE  
PORT ORANGE, FL 32128  
(408) 365-9532

**OAKLAND MALL OUTLOT**  
CITY OF TROY  
OAKLAND COUNTY  
DATE: 07.18.2015  
SCALE: 1" = 20'  
SHEET: 4  
PROJECT: 18853.00

FOR MORE INFORMATION:

**Aaron Smith**  
Vice President  
248.637.3515  
asmith@lmcap.com

**Michael Elle**  
Sales Associate  
248.637.3526  
melle@LMCap.com



CONNECT WITH US