

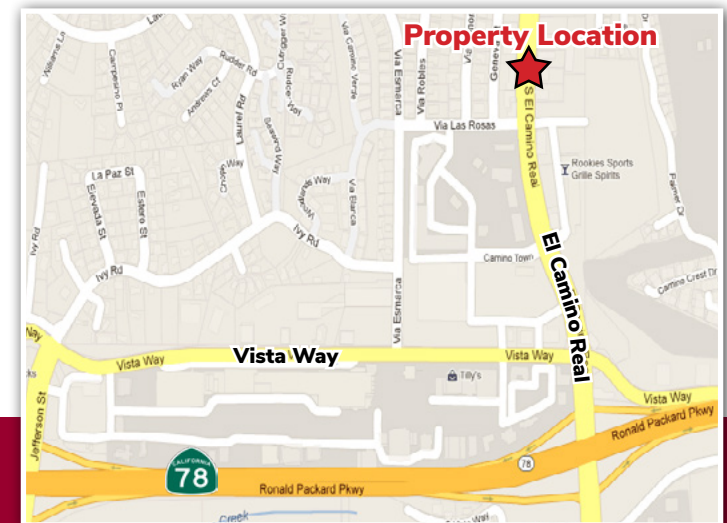
ONE SUITE AVAILABLE!
700 RSF

FOR LEASE
OFFICE SUITES

2181 EL CAMINO REAL
OCEANSIDE, CALIFORNIA 92054

PROPERTY HIGHLIGHTS

- Flexible Floor Plan
- High Speed Internet Access Available
- Easy Access to Highway 78 and Interstate 5
- Within Walking Distance to Banks, Restaurants, Major Shopping Centers and Fitness Center



Lee & Associate, Inc - NSDC
1902 Wright Place Suite 180
Carlsbad, CA 92008
P: (760) 929-9700 - F:(760) 929-9977

JEFF ABRAMSON

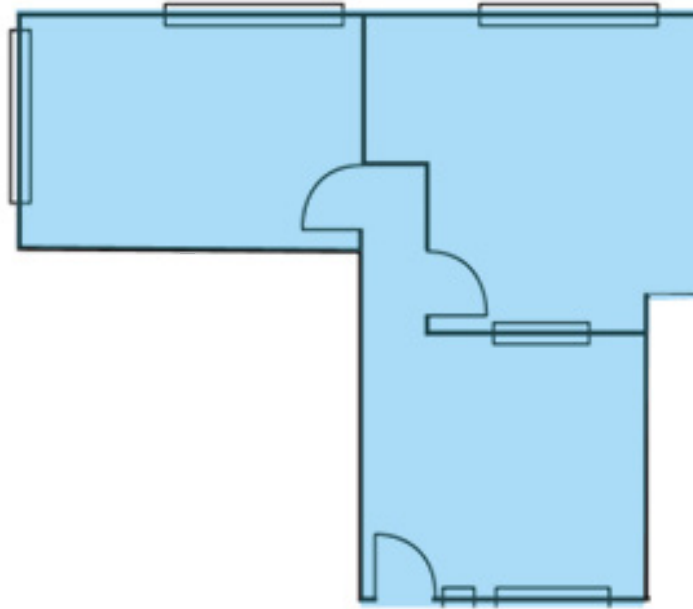
jabramson@lee-associates.com
(760) 929-7835
CalBRE Lic# 00956805

FOR LEASE

700 RSF

OCEANSIDE OFFICE SUITES
2181 El Camino Real, Oceanside CA 92054

SUITE 303



Suite #	Size	Rate	Available
303	700 RSF	\$1,400/month + U & CAM	Now



Lee & Associate, Inc - NSDC
1902 Wright Place Suite 180
Carlsbad, CA 92008
P: (760) 929-9700 - F:(760) 929-9977

JEFF ABRAMSON
jabramson@lee-associates.com
(760) 929-7835
CalBRE Lic# 00956805