



**Investment  
Properties  
Corporation**

**KITE**  
REALTY GROUP

**F O R L E A S E**

# KINGS LAKE SQUARE

📍 Publix-anchored center off of Davis Blvd in East Naples

4810-4890 Davis Blvd | Naples, FL 34104



Join Publix, Starbucks, Tacos & Tequila, and other key retailers at Kings Lake Square. Serving the enormous community of Kings Lake and the rapidly-growing area of East Naples.



**CONTACT 📞 (239) 261-3400 John Cheffy, ext. 182, [john@ipcnaples.com](mailto:john@ipcnaples.com)**

Investment Properties Corporation of Naples

3838 Tamiami Trail North Suite 402

Naples Florida 34103-3586

Tel: 239-261-3400 Fax: 249-261-7579 [www.ipcnaples.com](http://www.ipcnaples.com)

*Licensed Real Estate Broker*

The statement and figures presented herein, while not guaranteed, are secured from sources we believe authoritative.  
Subject to prior sale, lease, withdrawal and price change without notice.





# KINGS LAKE SQUARE

4810-4890 Davis Blvd | Naples, FL 34104

## LEASE INFORMATION

SUITE	SF	PSF/YR	EST. 2024 CAM	AVAILABILITY
B109	2,271 SF	Call For Details	\$7.72	IMMEDIATELY



Investment Properties Corporation of Naples  
3838 Tamiami Trail North Suite 402  
Naples Florida 34103-3586

Tel: 239-261-3400 Fax: 249-261-7579 [www.ipcnaples.com](http://www.ipcnaples.com)

*Licensed Real Estate Broker*

The statement and figures presented herein, while not guaranteed, are secured from sources we believe authoritative.  
Subject to prior sale, lease, withdrawal and price change without notice.





**KITE**  
REALTY GROUP

# KINGS LAKE SQUARE

4810-4890 Davis Blvd | Naples, FL 34104



## TENANT ROSTER:

A121: Starbucks 2,160 SF  
 A117: Aldo's Restaurant 3,240 SF  
 A115: Towncare Dental 2,160 SF  
 A111: Kings Lake Hair Design 1,960 SF  
 A107: Café Seabreeze 985 SF  
 A105: Tacos and Tequila Cantina 4,020 SF  
 A101: Leased 1,215 SF  
 B101: Mitch's Cookies 848 SF  
 B103: Estrella 825 SF  
 B105: H&R Block 1,194 SF  
 B107: Pho-An Vietnamese Cuisine 1,155 SF

**B109: AVAILABLE 2,310 SF**  
 B117: Publix 45,600 SF  
 B119: Publix Liquors 1,400 SF  
 B121: Great Clips 1,120 SF  
 B123: Hand & Stone 3,144 SF  
 B124: Tacos & Tequila Office 1,241 SF  
 B125: Pet Supplies Plus 8,657 SF  
 B130: Utopia Nail & Spa 1,050 SF  
 B135: Quest Diagnostics 2,100 SF  
 B140: Naples Preserve Villas 1,064 SF  
 B150: Tide 1,200 SF

Investment Properties Corporation of Naples  
 3838 Tamiami Trail North Suite 402  
 Naples Florida 34103-3586

Tel: 239-261-3400 Fax: 249-261-7579 [www.ipcnaples.com](http://www.ipcnaples.com)

*Licensed Real Estate Broker*

The statement and figures presented herein, while not guaranteed, are secured from sources we believe authoritative.  
 Subject to prior sale, lease, withdrawal and price change without notice.



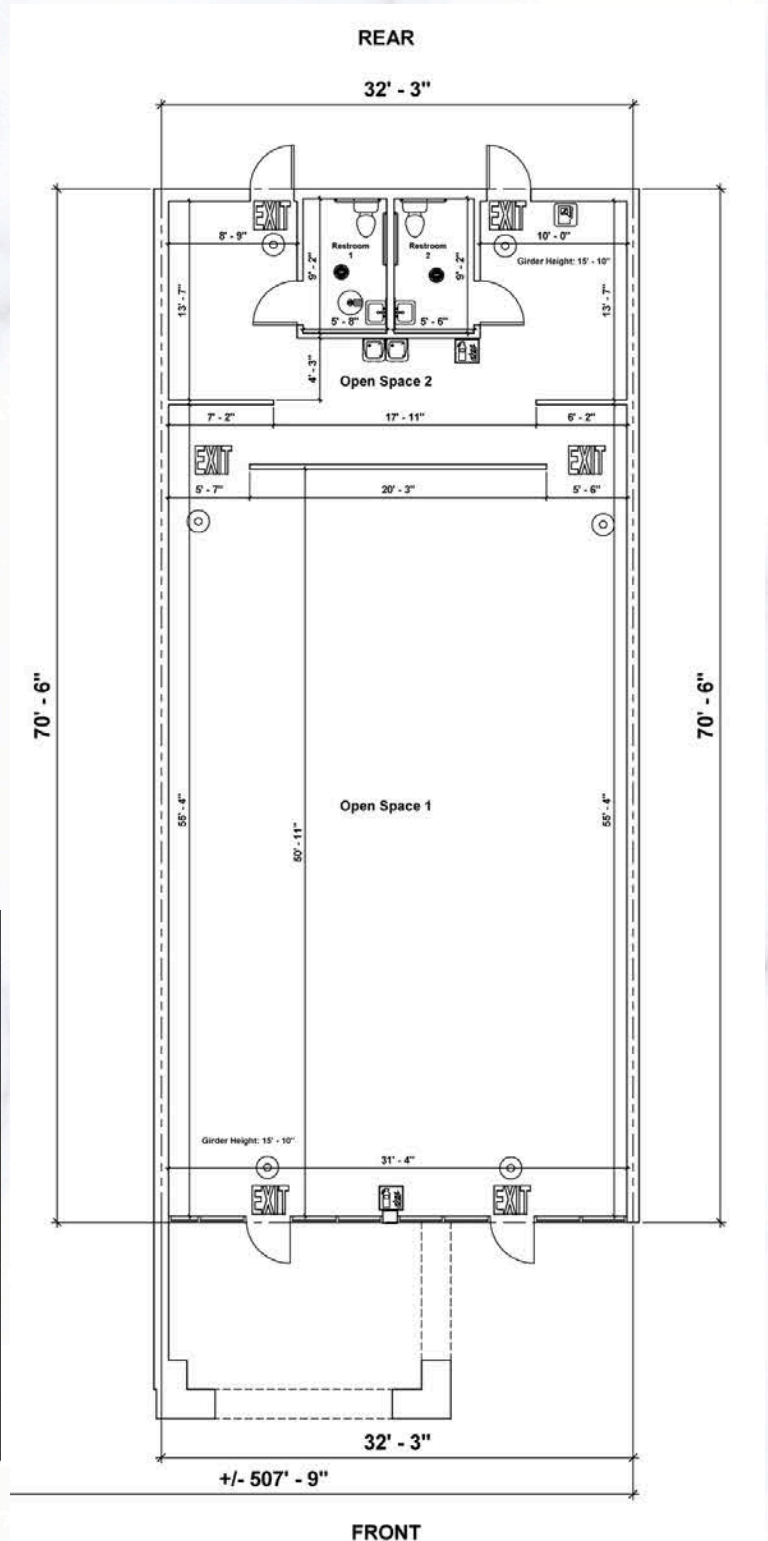
**KITE**  
REALTY GROUP

# KINGS LAKE SQUARE

4810-4890 Davis Blvd | Naples, FL 34104

## Unit #B109

2,271 SF



Investment Properties Corporation of Naples  
3838 Tamiami Trail North Suite 402  
Naples Florida 34103-3586

Tel: 239-261-3400 Fax: 249-261-7579 [www.ipcnaples.com](http://www.ipcnaples.com)

*Licensed Real Estate Broker*

The statement and figures presented herein, while not guaranteed, are secured from sources we believe authoritative.  
Subject to prior sale, lease, withdrawal and price change without notice.





**KITE**  
REALTY GROUP

# KINGS LAKE SQUARE

4810-4890 Davis Blvd | Naples, FL 34104



POPULATION

## 1 MILE

8,059

## 3 MILES

60,076

## 5 MILES

130,517



AVG. INCOME

\$83,253

\$101,406

\$114,866



HOUSING UNITS

3,879

28,465

57,280

click here!



Google  
Maps

**CONTACT** **(239) 261-3400**

**John Cheffy, ext. 182, john@ipcnaples.com**