

**2210
SYLVAN
ROAD**
EAST POINT,
GA 30344

FOR LEASE
3,500+/-SF - 7,000+/- SF Warehouse

SALLY TENNANT, SIOR

Senior Vice President
404.942.2021
stennant@kingindustrial.com

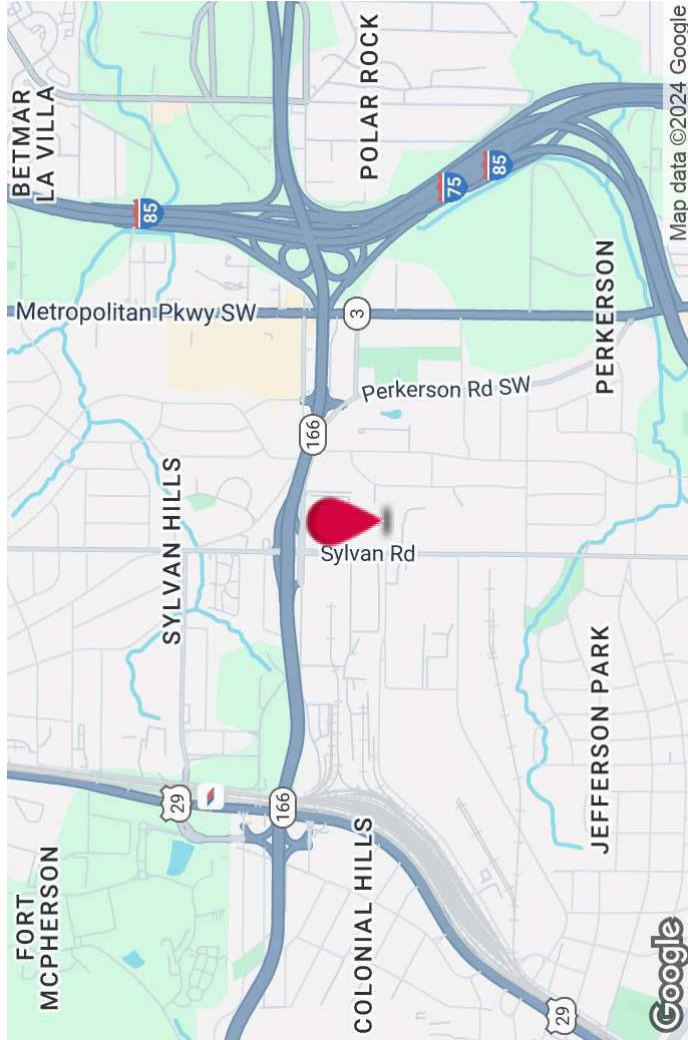
RYAN CLARK

Vice President
404.942.2037
rclark@kingindustrial.com

KING *Industrial
Realty, Inc.*

Industrial • Commercial • Investment
404.942.2000 | kingindustrial.com

FOR LEASE
3,500+/- SF TO
7,000+/-SF



PROPERTY HIGHLIGHTS

- **Suite C:** 3,500+/- SF to 7,000+/- SF
- Small Office and Restroom
- 1 Exterior Dock Door
- 12' Ceiling Height
- (5) 10'x10' Drive-In Bays

OFFERING SUMMARY

Building Size:

29,488 SF

Zoning:

I1

SALLY TENNANT, SIOR

Senior Vice President

404.942.2021

stennant@kingindustrial.com

Every effort has been made to provide accurate information, but no liability is assumed for errors or omissions.

RYAN CLARK

Vice President

404.942.2037

rclark@kingindustrial.com

King
Industrial
Realty, Inc.
CORFAC
INTERNATIONAL

Industrial • Commercial • Investment
404.942.2000 | kingindustrial.com

SUITE C
3,500+/- SF TO
7,000+/- SF



SALLY TENNANT, SIOR

Senior Vice President

404.942.2021

stennant@kingindustrial.com

Every effort has been made to provide accurate information, but no liability is assumed for errors or omissions.

RYAN CLARK

Vice President

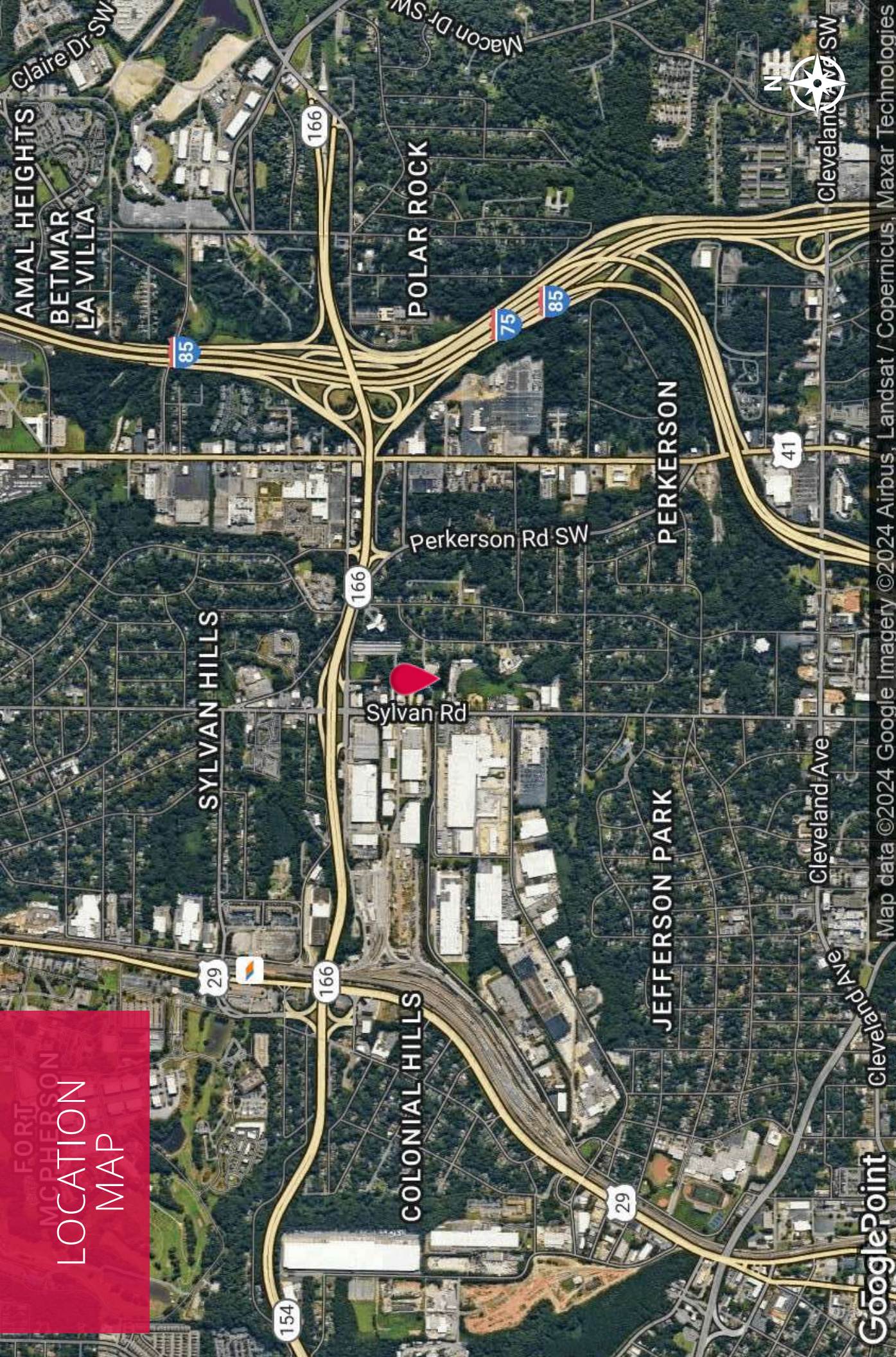
404.942.2037

rclark@kingindustrial.com

King
Industrial
Realty, Inc.
CORFAC
INTERNATIONAL

Industrial • Commercial • Investment
404.942.2000 | kingindustrial.com

**LOCATION
MAP**



GooglePoint

Map data ©2024 Google Imagery ©2024 Airbus, Landsat / Copernicus, Maxar Technologies

SALLY TENNANT, SIOR
Senior Vice President
404.942.2021
stennant@kingindustrial.com
Every effort has been made to provide accurate information, but no liability is assumed for errors or omissions.

RYAN CLARK
Vice President
404.942.2037
rclark@kingindustrial.com

King Industrial Realty, Inc.
CORFAC INTERNATIONAL
Industrial • Commercial • Investment
404.942.2000 | kingindustrial.com