



138 W JESSUP AVE

150 W JESSUP AVE



[VIEW THE DRONE VIDEO](#)

## THE BARN & THE BUNGALOW - FOR SALE

138 -150 W Jessup Avenue, Longwood, FL 32750

Two-Building, Campus Style  
Property Available in the Heart of  
Downtown Longwood

### PROPERTY HIGHLIGHTS

- Unique gem in Longwood submarket with a one-of-a-kind campus layout.
- Well maintained, single-user buildings.
- Frontage along W Jessup Avenue and steps to Ronald Reagan Blvd.
- Efficient layout with exceptional interior/exterior finishes.
- Ample parking options: Dedicated on-site parking, free street parking, and adjacent access to a public city lot.
- Walking distance to Longwood's downtown corridor including City Hall, SunRail Station, Farmer's Market, and Reiter Park.
- Proximity to Orlando Health's re-imagined, new state-of-the-art Healthcare Hub (pictured below) and planned site redevelopment.



#### ASKING PRICE:

Call for Details



#### SQUARE FOOTAGE:

**138 W Jessup:** 1,525 ± SF

*Plus Detached Studio: ± 172 SF*

**150 W Jessup:** 3,508 ± SF



#### ZONING:

[Downtown Storefront](#)



#### PARKING:

Ample Parking Available



**HARBERT**  
REALTY SERVICES

**DAMIEN MADSEN**

[dmadsen@harbertrealty.com](mailto:dmadsen@harbertrealty.com) | 407.256.2844

**JOSH SMITH**

[jsmith@harbertrealty.com](mailto:jsmith@harbertrealty.com) | 407.377.4050

**For More Information: [HarbertRealty.com](https://www.HarbertRealty.com)**

400 S Park Ave, Suite 225, Winter Park, FL 32789

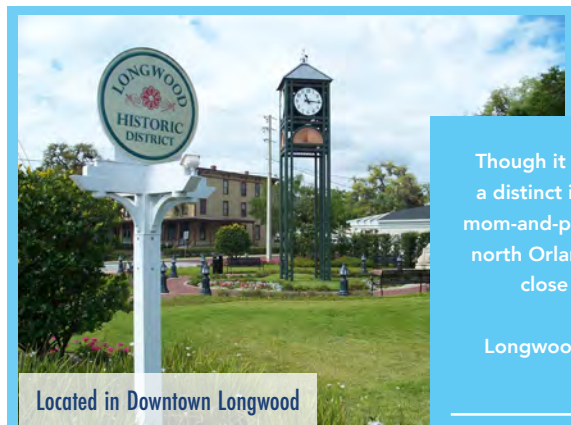
The information contained herein has been obtained from sources deemed reliable, however, HRS makes no guarantees, warranties or representation as to its completeness or accuracy thereof. The presentation of this property is submitted subject to errors, omissions, change of price or conditions, prior to sale or lease or withdrawal without notice



# OFFICE BUILDINGS FOR SALE

138-150 W Jessup Ave, Longwood, FL 32750

## AREA OVERVIEW



## LONGWOOD, FLORIDA

Though it sits in the shadow of Orlando, Longwood, Florida, has a distinct identity, boasting a small historic downtown and many mom-and-pop shops and eateries. This community of 17,089 in the north Orlando suburbs is part of a sprawling metro area, offering close to health care centers, sports and entertainment.

Longwood was named one of only eight of AARP's "Great and Affordable Places to Live" for 2026.

**AARP**® Great and Affordable Places to Live  
2026 Edition



DAMIEN MADSEN  
dmadsen@harbertrealty.com | 407.256.2844

JOSH SMITH  
jsmith@harbertrealty.com | 407.377.4050

For More Information: [HarbertRealty.com](https://www.HarbertRealty.com)  
400 S Park Ave, Suite 225, Winter Park, FL 32789



# OFFICE BUILDINGS FOR SALE

138-150 W Jessup Ave, Longwood, FL 32750

## PROPERTY HIGHLIGHTS

### 138 W JESSUP AVE "THE BUNGALOW"



- One-story, **1,525 ± SF** bungalow-style office building; built in 1925 (ren. 1990)
- Known as "The Bungalow" for its standalone charm and private setting
- Rich hardwood flooring and contemporary finishes throughout
- Dedicated meeting room; private offices with garden-facing windows
- Detached air-conditioned studio (172 ± SF) ideal for focused work or flexible use
- Walkway connecting buildings with natural tree canopy overhead
- Dedicated parking lot; free street parking available



**HARBERT**  
REALTY SERVICES

**DAMIEN MADSEN**

[dmadsen@harbertrealty.com](mailto:dmadsen@harbertrealty.com) | 407.256.2844

**JOSH SMITH**

[jsmith@harbertrealty.com](mailto:jsmith@harbertrealty.com) | 407.377.4050

**For More Information: [HarbertRealty.com](https://www.HarbertRealty.com)**

400 S Park Ave, Suite 225, Winter Park, FL 32789



# OFFICE BUILDINGS FOR SALE

138-150 W Jessup Ave, Longwood, FL 32750

## INTERIOR PHOTOS

### 138 W JESSUP AVE



Central Workspace



Office



Meeting Room



Office



Meeting Room



Break Room



DAMIEN MADSEN  
dmadsen@harbertrealty.com | 407.256.2844

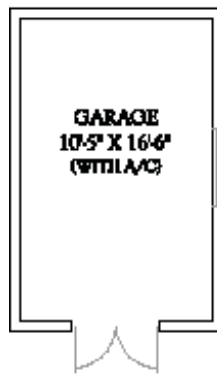
JOSH SMITH  
jsmith@harbertrealty.com | 407.377.4050

For More Information: [HarbertRealty.com](https://www.harbertrealty.com)  
400 S Park Ave, Suite 225, Winter Park, FL 32789

# OFFICE BUILDINGS FOR SALE

138-150 W Jessup Ave, Longwood, FL 32750

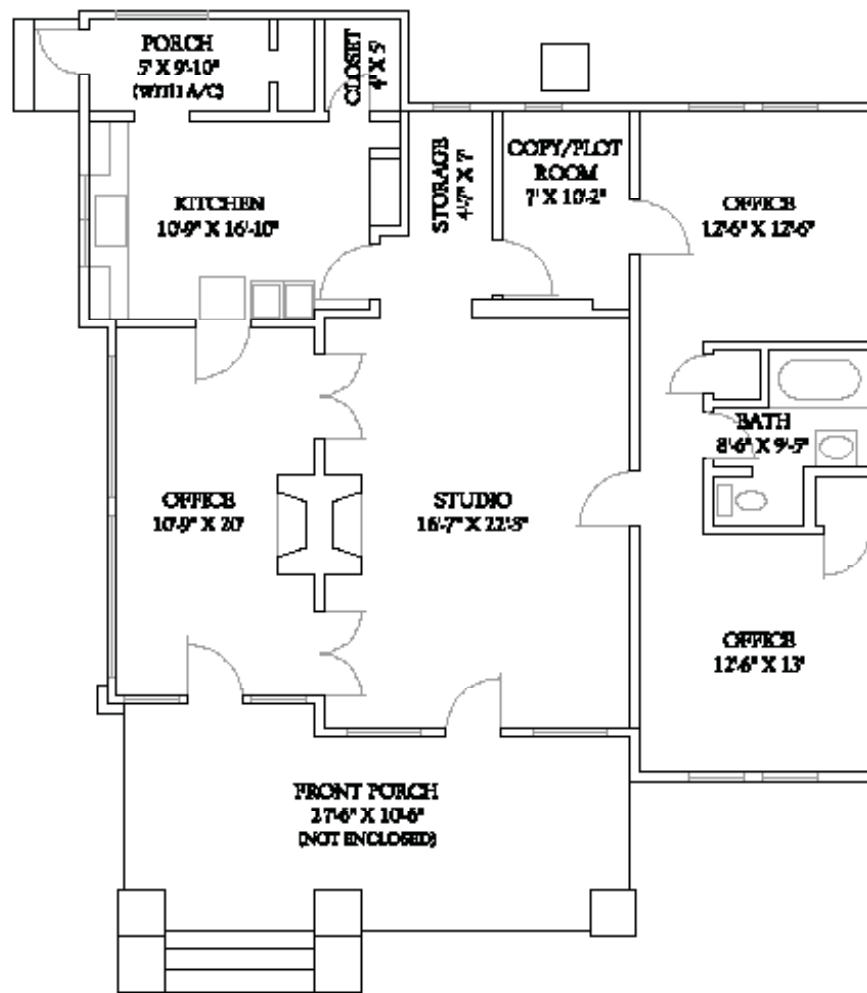
## FLOOR PLAN



**138 W JESSUP AVE**

**MAIN BUILDING: 1,525 ± SF**

**STUDIO: 172 ± SF**



**HARBERT**  
REALTY SERVICES

**DAMIEN MADSEN**

dmdadsen@harbertrealty.com | 407.256.2844

**JOSH SMITH**

jsmith@harbertrealty.com | 407.377.4050

*For More Information: [HarbertRealty.com](http://HarbertRealty.com)*

400 S Park Ave, Suite 225, Winter Park, FL 32789



# OFFICE BUILDINGS FOR SALE

138-150 W Jessup Ave, Longwood, FL 32750

## PROPERTY HIGHLIGHTS

### 150 W JESSUP AVE "THE BARN"



- Two-story, **3,508 ± SF** bungalow-style office building; built in 1981
- Known as "The Barn" for its warm, rustic charm
- Features exposed wooden beams and plank-lined vaulted ceilings
- Open-concept loft layout with multiple workstations
- Dedicated conference room
- Walkway connecting buildings with natural tree canopy overhead
- Dedicated parking lot; free street parking available



HARBERT  
REALTY SERVICES

DAMIEN MADSEN

[dmadsen@harbertrealty.com](mailto:dmadsen@harbertrealty.com) | 407.256.2844

JOSH SMITH

[jsmith@harbertrealty.com](mailto:jsmith@harbertrealty.com) | 407.377.4050

*For More Information: [HarbertRealty.com](https://www.HarbertRealty.com)*

400 S Park Ave, Suite 225, Winter Park, FL 32789



# OFFICE BUILDINGS FOR SALE

138-150 W Jessup Ave, Longwood, FL 32750

## INTERIOR PHOTOS

### 150 W JESSUP AVE



Conference Room



Offices



Lobby/Reception



Shared Workspace



Offices



Stairwell



DAMIEN MADSEN  
dmadsen@harbertrealty.com | 407.256.2844

JOSH SMITH  
jsmith@harbertrealty.com | 407.377.4050

For More Information: [HarbertRealty.com](http://HarbertRealty.com)  
400 S Park Ave, Suite 225, Winter Park, FL 32789



# OFFICE BUILDINGS FOR SALE

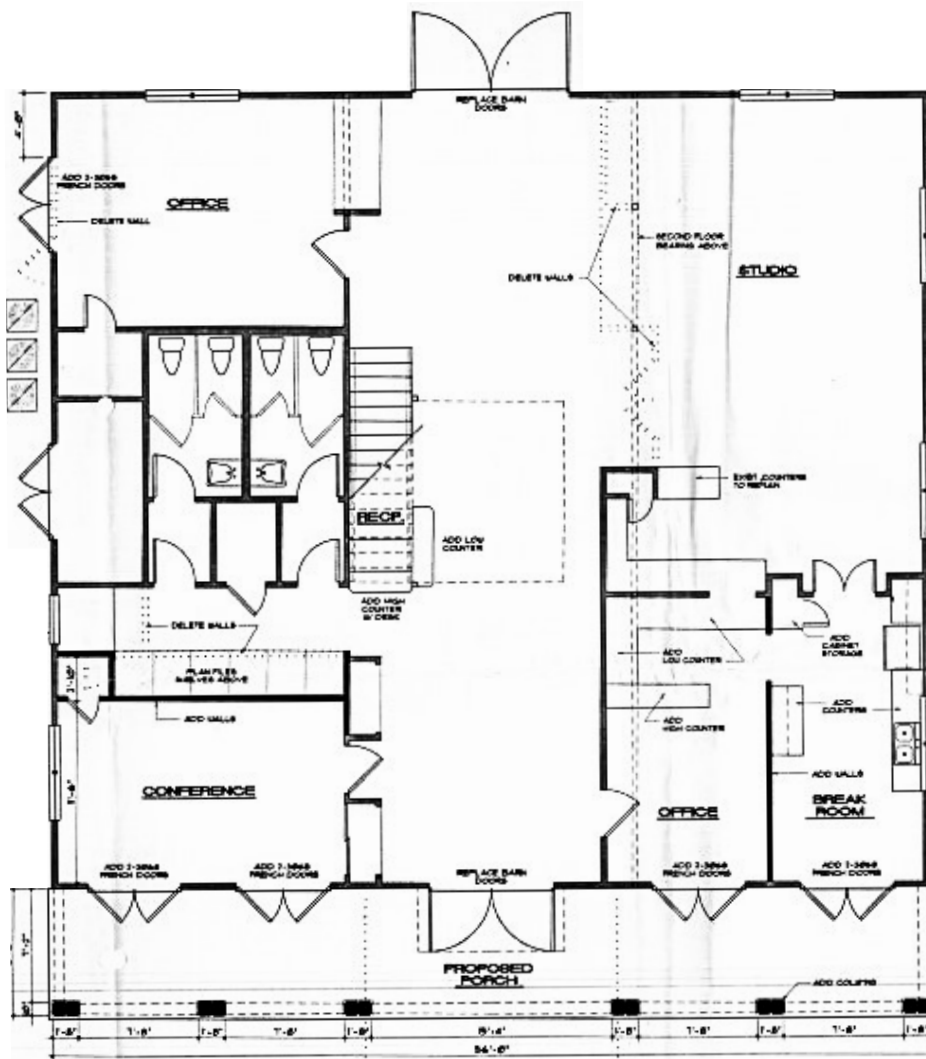
138-150 W Jessup Ave, Longwood, FL 32750

## FLOOR PLAN

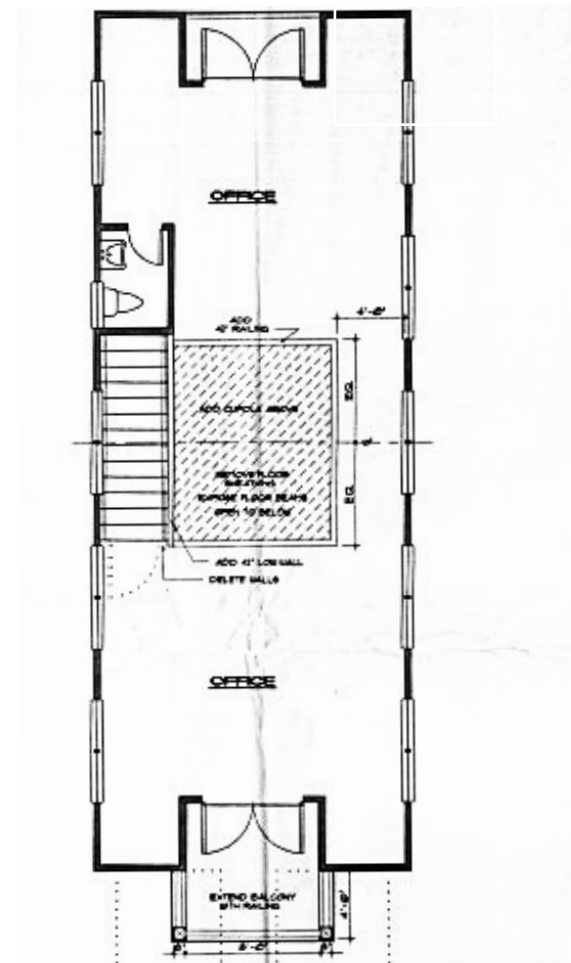
150 W JESSUP AVE

3,508 ± SF

### 1ST FLOOR



### 2ND FLOOR



HARBERT  
REALTY SERVICES

DAMIEN MADSEN

[dmadsen@harbertrealty.com](mailto:dmadsen@harbertrealty.com) | 407.256.2844

JOSH SMITH

[jsmith@harbertrealty.com](mailto:jsmith@harbertrealty.com) | 407.377.4050

For More Information: [HarbertRealty.com](http://HarbertRealty.com)

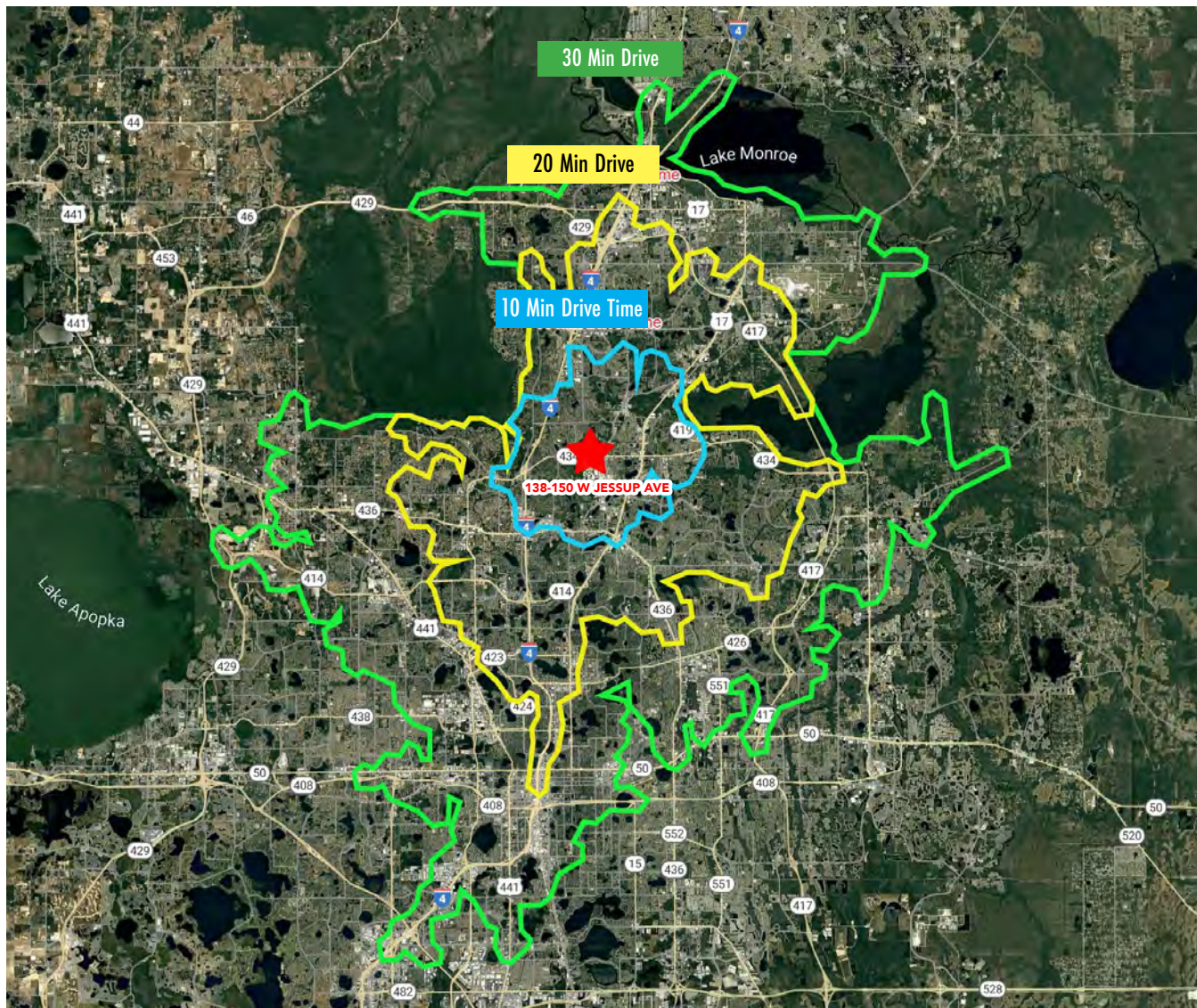
400 S Park Ave, Suite 225, Winter Park, FL 32789



# OFFICE BUILDINGS FOR SALE

138-150 W Jessup Ave, Longwood, FL 32750

## DRIVE TIMES



### <5 MIN

1 minute  
Reiter Park  
Orlando Health Campus

2 minutes  
Longwood City Hall

3 minutes  
Longwood SunRail Station  
Winn-Dixie Shopping Plaza

### <10 MIN

2 minutes  
W SR 434

7 minutes  
Interstate 4 (I-4)

8 minutes  
to N US Hwy 17-92

### <20 MIN

17 minutes  
SFB  
(Orlando Sanford  
International Airport)

### 30+ MIN

30 minutes  
Orlando Executive Airport

35 minutes  
MCO  
(Orlando International  
Airport)



HARBERT  
REALTY SERVICES

DAMIEN MADSEN

dmadsen@harbertrealty.com | 407.256.2844

JOSH SMITH

jsmith@harbertrealty.com | 407.377.4050

*For More Information: HarbertRealty.com*  
400 S Park Ave, Suite 225, Winter Park, FL 32789