

36555 AMRHEIN ROAD  
LIVONIA, MICHIGAN



**SIGNATURE  
ASSOCIATES**  
KNOW SIGNATURE | KNOW RESULTS

INDUSTRIAL FOR SALE OR LEASE  
147,000 Square Feet on 10.86 Acres

**OUTSTANDING CRANE FACILITY**



## PROPERTY FEATURES

- 147,000 square feet with 8,125 square feet office
- Located on 10.86 acres of land
- Zoned for outside storage/truck parking
- (11) 10-ton cranes in (4) crane bays
- 30' clear height
- (4) 14' x 20' and (2) 12' x 14' grade level doors
- Two drive through offloading bays
- 1500 amps, 240/480 volts, 3-phase power est.
- Whole building generator/step down trans.
- Several private offices and cubicles
- Near I-96/I-275/M-14 interchanges
- Lease Rate: \$6.00/sq. ft. NNN
- Sale Price: \$11,025,000 (\$75.00/sq. ft.)



For more information, please contact:

**STEVE GORDON**

(248) 948 0101

sgordon@signatureassociates.com

**JACK TOWNSEND**

(248) 948 0115

jtownsend@signatureassociates.com

**SIGNATURE ASSOCIATES**

One Towne Square, Suite 1200

Southfield, MI 48076

www.signatureassociates.com



# 36555 Amrhein Road – Livonia, Michigan

## Industrial For Sale or Lease

147,000  
Square Feet  
AVAILABLE

### Additional Photos



For more information, please contact:

**STEVE GORDON**

(248) 948 0101

[sgordon@signatureassociates.com](mailto:sgordon@signatureassociates.com)

**JACK TOWNSEND**

(248) 948 0115

[jtownsend@signatureassociates.com](mailto:jtownsend@signatureassociates.com)

**SIGNATURE ASSOCIATES**

One Towne Square, Suite 1200

Southfield, MI 48076

[www.signatureassociates.com](http://www.signatureassociates.com)

Information is subject to verification and no liability for errors or omissions is assumed. Price is subject to change and listing withdrawal.



# 36555 Amrhein Road – Livonia, Michigan

## Industrial For Sale or Lease

147,000  
Square Feet  
AVAILABLE

### Additional Photos



For more information, please contact:

**STEVE GORDON**  
(248) 948 0101  
[sgordon@signatureassociates.com](mailto:sgordon@signatureassociates.com)

**JACK TOWNSEND**  
(248) 948 0115  
[jtownsend@signatureassociates.com](mailto:jtownsend@signatureassociates.com)

**SIGNATURE ASSOCIATES**  
One Towne Square, Suite 1200  
Southfield, MI 48076  
[www.signatureassociates.com](http://www.signatureassociates.com)

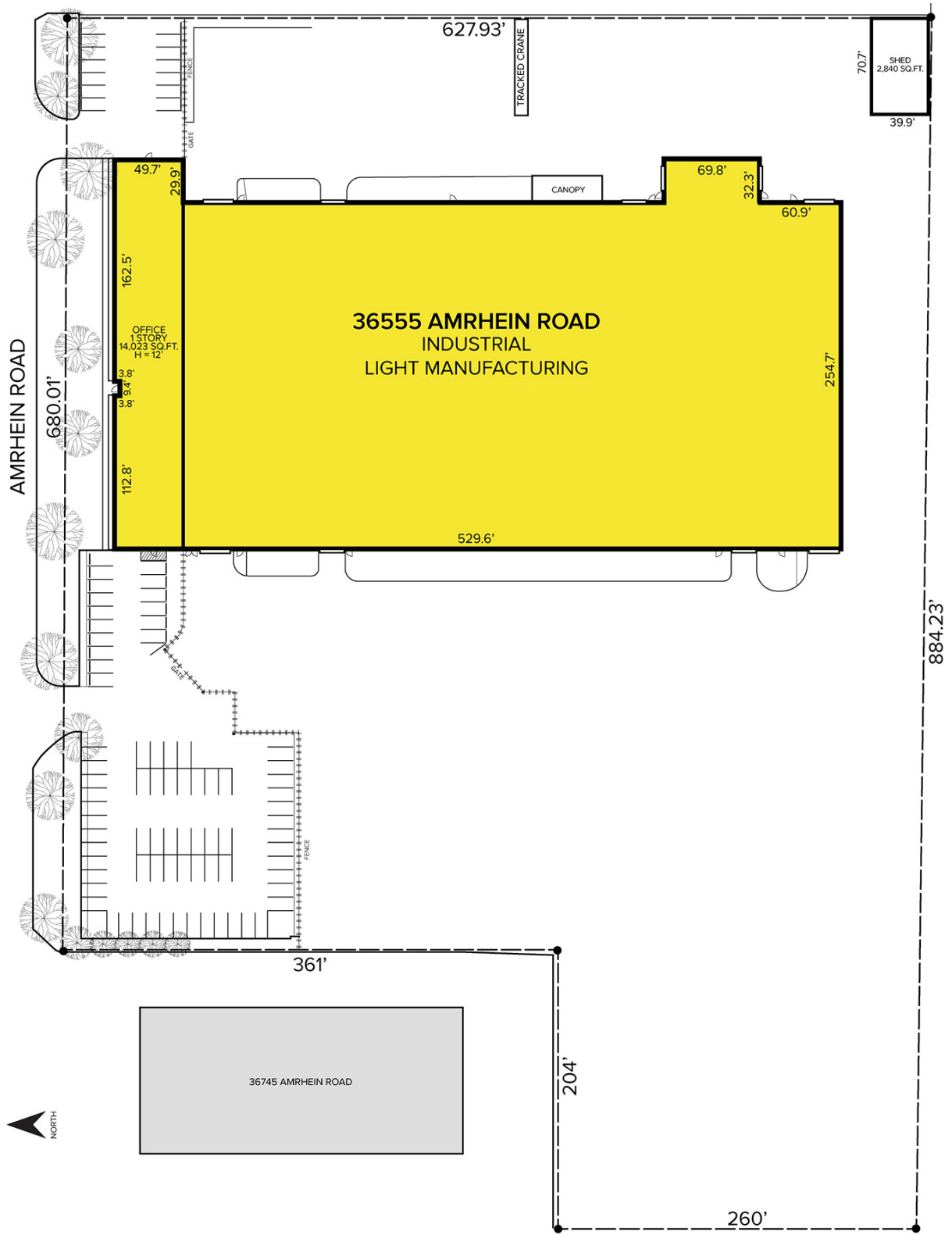
Information is subject to verification and no liability for errors or omissions is assumed. Price is subject to change and listing withdrawal.

# 36555 Amrhein Road – Livonia, Michigan

## Industrial For Sale or Lease

147,000  
Square Feet  
AVAILABLE

### Site Plan



For more information, please contact:

**STEVE GORDON**

(248) 948 0101

sgordon@signatureassociates.com

**JACK TOWNSEND**

(248) 948 0115

jtownsend@signatureassociates.com

**SIGNATURE ASSOCIATES**

One Towne Square, Suite 1200

Southfield, MI 48076

www.signatureassociates.com



# 36555 Amrhein Road – Livonia, Michigan

## Industrial For Sale or Lease

147,000  
Square Feet  
AVAILABLE

Aerial



For more information, please contact:

**STEVE GORDON**

(248) 948 0101

[sgordon@signatureassociates.com](mailto:sgordon@signatureassociates.com)

**JACK TOWNSEND**

(248) 948 0115

[jtownsend@signatureassociates.com](mailto:jtownsend@signatureassociates.com)

**SIGNATURE ASSOCIATES**

One Towne Square, Suite 1200

Southfield, MI 48076

[www.signatureassociates.com](http://www.signatureassociates.com)