



 **JLL** SEE A BRIGHTER WAY

For lease

2nd generation
restaurant space
available at The Plaza
Shoppes in Ankeny, Iowa

Furniture, fixtures & equipment not included (except for grease trap, walk in cooler and hood system).

Availability: 3,491 RSF

Lease rate: \$21.00/RSF NNN

2510 SW White Birch Dr, Suite 7 & 8
Ankeny, Iowa 50023

Property overview

Available space: 3,491 RSF

Lease rate: \$21.00/RSF NNN

Est. OPEX: Available upon request

- Positioned at the center of it all, The Plaza Shoppes are home to grocery, retail, boutiques, fitness, dining, and more.
- Prairie Trail a 1,031-acre planned community built on the tradition of Iowa's greatest neighborhoods in Ankeny, Iowa.
- Ankeny, Iowa is the 10th fastest growing city in the United States by U.S. Census Bureau

Contact broker for
additional information

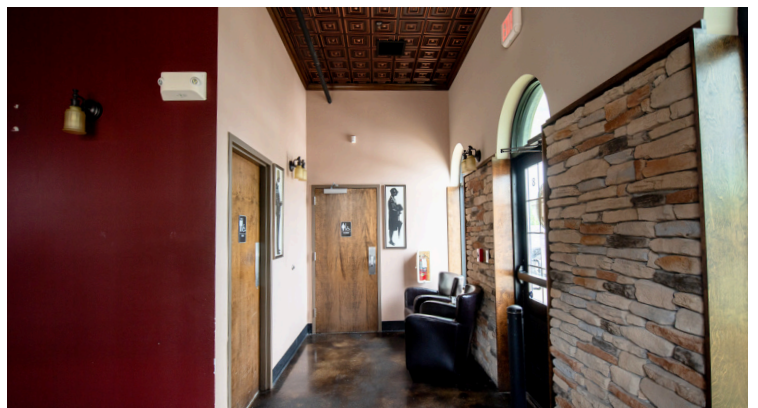
jll.com/des-moines

Meredith Hedstrom
Vice President
meredith.hedstrom@jll.com
+1 515 419 2963

Nick Anderson
Associate
nicholas.anderson@jll.com
+1 515 729 6015

Aaron Hyde
Senior Vice President
aaron.hyde@jll.com
+1 515 953 8834

Property photos



Floor plan

**For marketing purposes only, subject to change.*

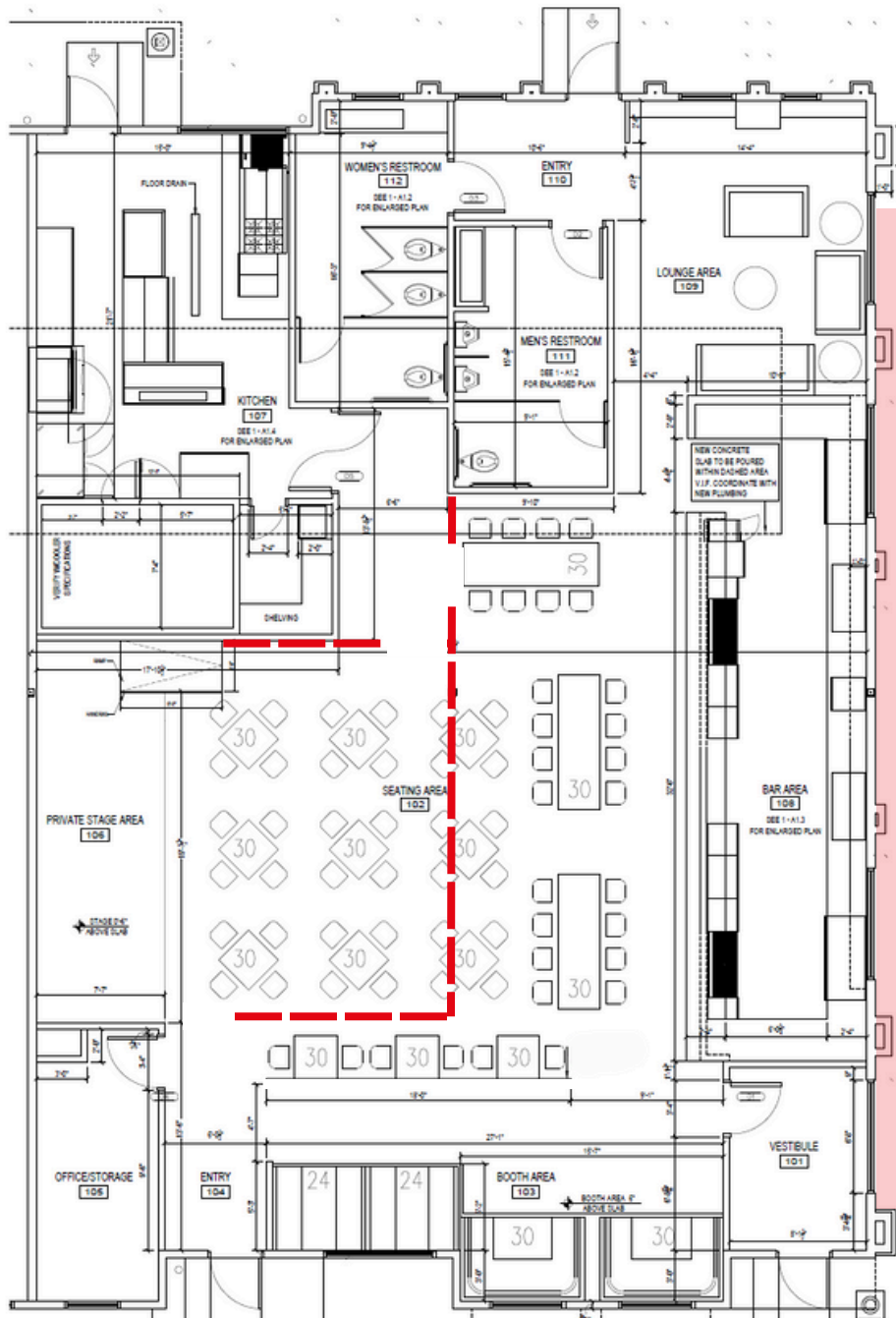
Availability: 3,491 RSF

Lease rate: \$21.00/PSF NNN

Est. OPEX: Available upon request

Furniture, fixtures & equipment not included (except for grease trap, walk in cooler and hood system).

Rear
Entrance



Patio

3,491 RSF
For lease

Front
Entrance

For lease

2510 SW White Birch Dr, Suite 7 & 8 | Ankeny, Iowa 50023



Prairie Trail is a 1,031-acre urbanism community located in the heart of Ankeny, Iowa. Featuring single-and-multi-family residences, numerous grocery, retail, boutiques, restaurants, fitness, office users, and 200+ acres of public parks, trails and open green spaces.

Contact broker for additional information

jll.com/des-moines

Meredith Hedstrom
Vice President
meredith.hedstrom@jll.com
+1 515 419 2963

Nick Anderson
Associate
nicholas.anderson@jll.com
+1 515 729 6015

Aaron Hyde
Senior Vice President
aaron.hyde@jll.com
+1 515 953 8834