

10
GREG STREET
SUITES
SPARKS, NV 89431

FLEX
INDUSTRIAL
FOR LEASE

LEASE RATE | \$1.40/SF/MG
SIZES | 1,980 SF - 3,750 SF
APN | 034-481-17



TRAVIS HANSEN, SIOR, CCIM
775.624.3957 **OFFICE**
775.351.5578 **CELL**
thansen@dicksoncg.com
S.170076



10 GREG STREET

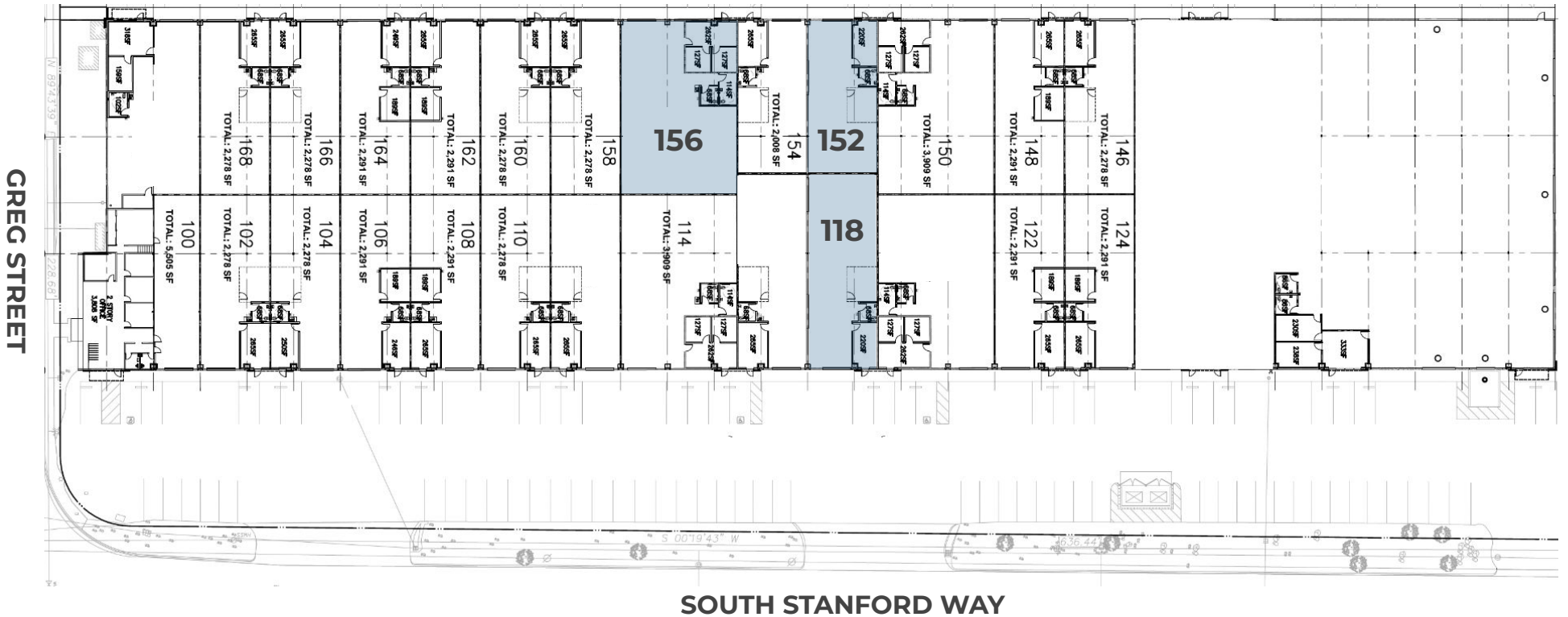


Property Highlights Include:

- Large 12' x 14' roll up doors.
- Estimated CAM of \$.06/SF.
- Well located, multi-tenant industrial facility offering good visibility and excellent access to I-80, Industrial Sparks, the Tahoe-Reno Industrial Center (TRIC) and the Southeast Connector.
- Industrial flex units available immediately.
- The units are in an industrial-zoned business park that includes Fly High Trampoline Park, Glory Cloud Coffee Roasters, Triple A Carpet, Sparks Diesel Service and others.
- Located on the corner of E. Greg Street and Stanford Way in Sparks, Nevada, the area boasts nearby amenities including restaurants, retail, and hospitality as well as easy access to I-80.
- The units are delivered in excellent condition with fresh paint and carpeting throughout.

SUITES AVAILABLE

SUITE	SIZE	LEASE RATE	AVAILABLE	360 TOUR
118	2,520 SF	\$1.40/SF/MG	IMMEDIATELY	VIEW SUITE 118
152	1,980 SF	\$1.40/SF/MG	IMMEDIATELY	VIEW SUITE 152
156	3,750 SF	\$1.40/SF/MG	IMMEDIATELY	VIEW SUITE 156



*Sizes and dimensions are approximate, actual may vary.

PARCEL MAP

Downtown Reno



156

152

118

GREG STREET

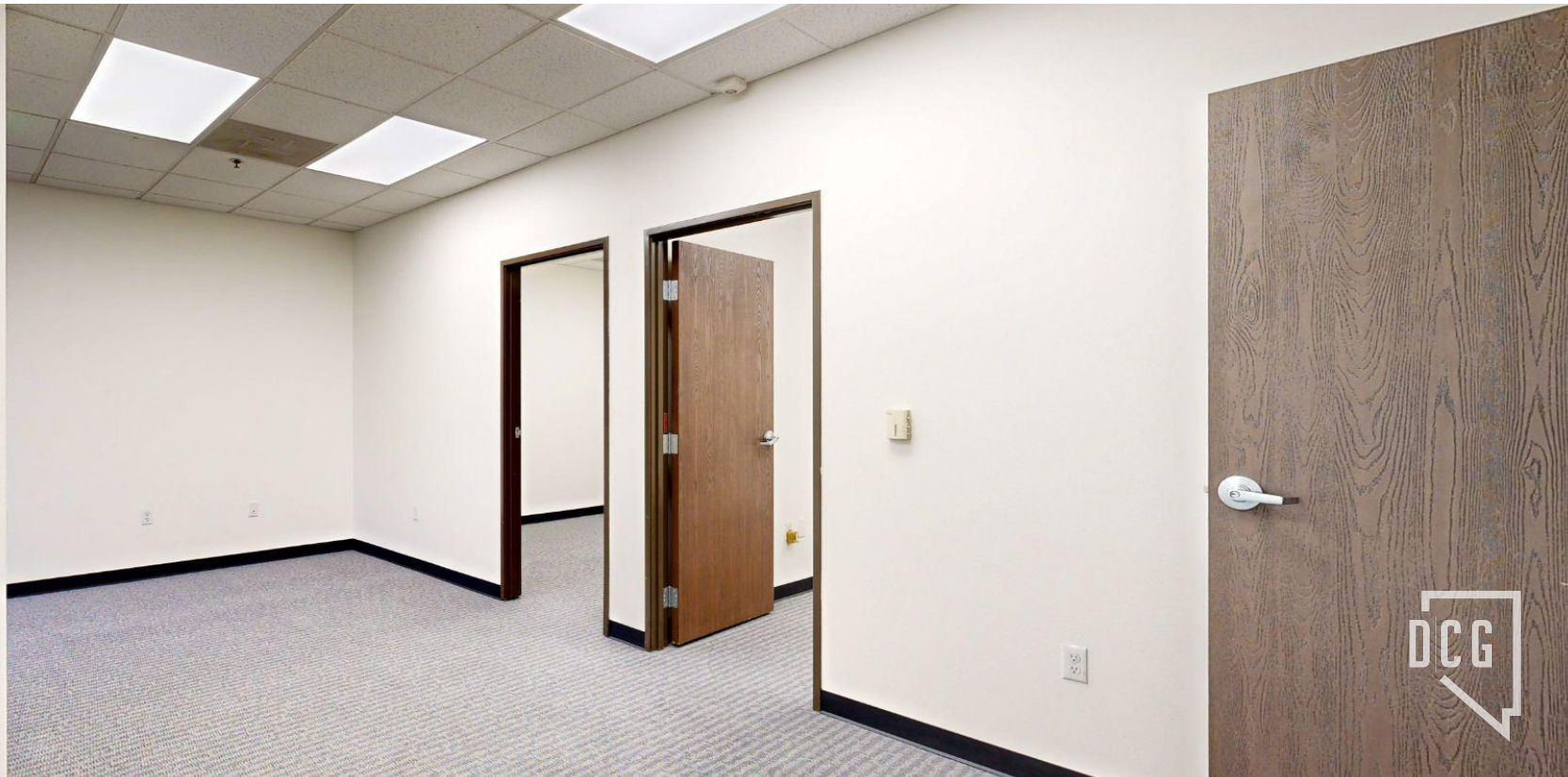
SOUTH STANFORD WAY



SUITE 156



SUITE 156

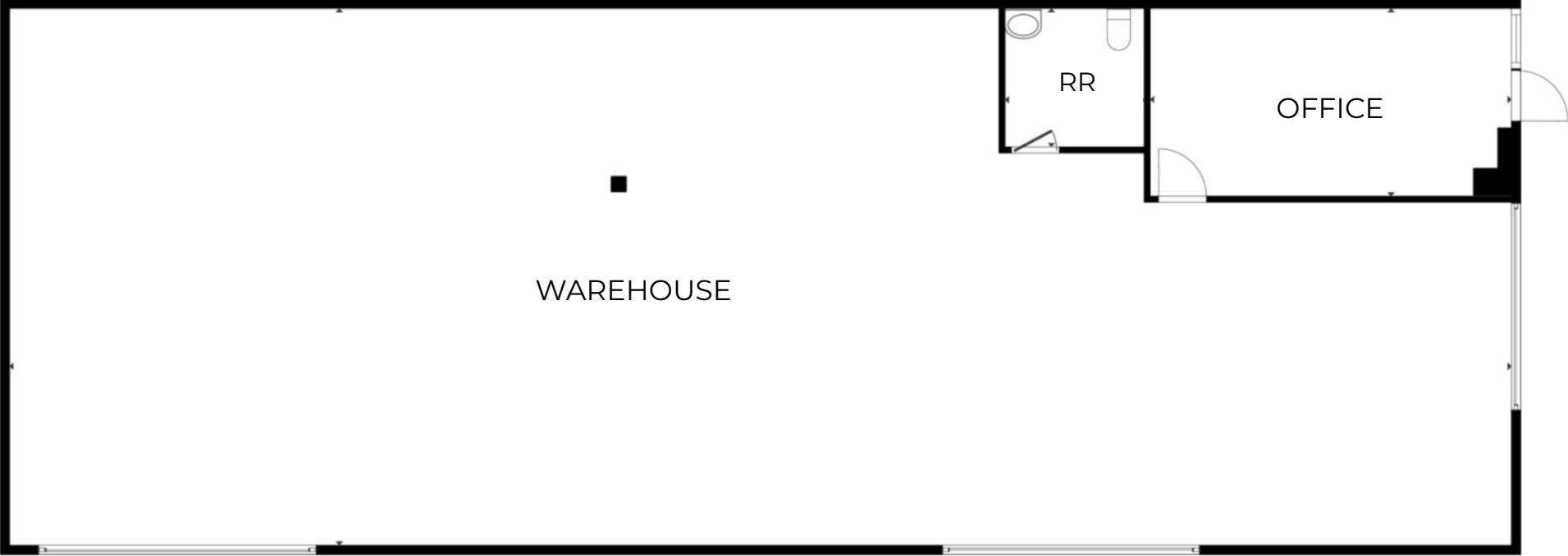


SUITE 156



SUITE 118

2,520 SF



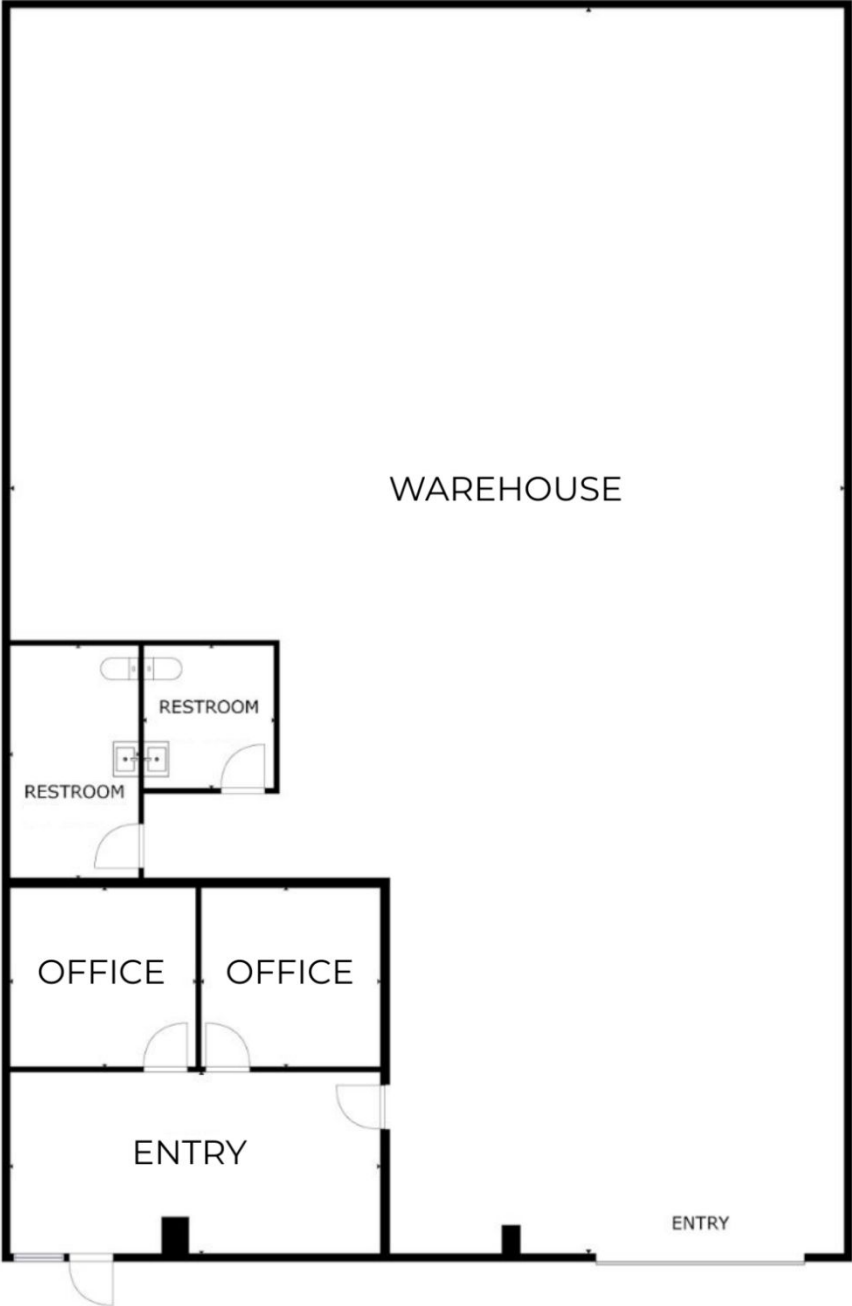
SUITE 152

1,980 SF



SUITE 156

3,750 SF



THE NEW NEVADA

Grow Your Business Here.

NORTHERN NEVADA



CITY OF RENO

- **Over 100 new start up companies** have set up shop in Northern Nevada in the past 2 years.
- Ranked in **TOP 10** places to live.
- Ranks **6TH** in Gen Z City Index for best places to live.
- Average commute time is **20 MINUTES**.

BUSINESS FRIENDLY



- Ranked in **TOP 10** states for best business tax climate.
- Ranked in **TOP 10** states for business incentives.

TECHNOLOGY INFRASTRUCTURE



- Major data centers: **Switch, Apple, Rackspace**.
- Research Collaboration.
- Home to **New Deantronics, Panasonic, Sierra Nevada Corporation**
- **“Super-Loop”** Fiber Network in Progress.

REAL ESTATE, LAND, RESOURCES



- Affordable large-scale real estate and water available.
- Large Industrial Space.
- (**Tesla Gigafactory** in the Tahoe Reno Industrial Center).

ENTREPRENEURIAL ECOSYSTEM



- Ranked as one of the **14 best** startup cities in America.
- Support for entrepreneurs from education, mentorship and funding.
- Home to **Switch, Filament, Flirtey, Bombora, Iris Automation, Clickbio, My-Vr and Many More**

SHIPPING HUB



- Less Than **1-Day** Truck Service To **> 60 M Customers, 8 States, 5 Major Ports**.
- **2-Day** Truck Service to **11 States**.

TAX ADVANTAGES



- **No** Corporate Tax
- **No** Personal Income Tax
- **No** Inventory Tax
- **No** Franchise Tax
- **No** Special Intangible Tax

TIER 1 UNIVERSITY



- University of Nevada Reno, more than **20,000 students**
- **R1** - University for Research by Carnegie Classifications

WORKFORCE DEVELOPMENT



- Meeting the changing needs of industry through higher education, new college technical programs, industry certifications, steam programs, and attracting talent to the region.



ICONIC COMPANIES IN **NORTHERN NEVADA**

Tesla plans to invest \$3.6 billion to expand Gigafactory, introducing two new factories; a battery manufacturing facility and a truck factory that can support approximately 3,000 new team members.



TESLA

Gigafactory Nevada currently spans 5.4 million square feet and represents a \$6.2 billion investment for Tesla to date. Annually Tesla produces 7.3 billion battery cells, 1.5 million battery packs, 3.6 million electric vehicles and 1 million energy modules, employing over 11,000 staff members.

Switch is the largest, most advanced data center campus in the world encompassing up to 1.3 million square feet on 2,000 acres in the Tahoe Reno Industrial Center. The facility is powered 100-percent by renewable energy.



Google/Alphabet owns 1,210 acres in The Tahoe Reno Industrial Center a few miles south of Tesla's Gigafactory. The land will reportedly house a future data center and could also host a testing track for Waymo, the Alphabet-owned autonomous driving company.



ITS Logistics is a premier Third-Party Logistics company that provides creative supply chain solutions. ITS logistics headquarters is located in Sparks, Nevada. ITS logistics also has a 40,000 square foot office located in the heart of Downtown Reno.



New Deantronics built a 200,00 square foot medical device technology campus in the Spanish Springs Industrial Park in 2021. The industrial park is home to well known companies like U-Haul, San Mar and Foot Locker.



Panasonic

Panasonic added 94,483 square foot campus located in Reno's airport submarket. The location is the PENA's division headquarters and features state of the art engineering labs, employee recruitment and training facilities and other functions.



Dragonfly Energy has a 99,000 square foot facility in Reno Nevada and has created over 150 jobs. Dragonfly Energy is an industry-leading manufacturer of deep cycle lithium-ion batteries and is spearheading conventional and solid-state lithium-ion battery research and development worldwide.



Apple's \$1 Billion data campus at the Reno Technology Park continues to expand years after its announcement in 2017 with over 100 employees and claims to get 100% of its power from renewable energy sources.



Redwood Materials is creating a closed-loop, domestic supply chain for lithium-ion batteries across collection, refurbishment, recycling, refining, and remanufacturing of sustainable battery materials. Headquartered in Carson City, with a 173 acre battery recycling operation at the Tahoe-Reno Industrial Center and leasing 670,000 square feet of Class A industrial space inside the Comstock Commerce Center. Redwood expects to invest \$3.5 billion in Northern Nevada over the coming decade and hire more than 1,500 people at their Tahoe-Reno Industrial Center site.

TRAVIS HANSEN, SIOR, CCIM

775.624.3957 **OFFICE**

775.351.5578 **CELL**

thansen@dicksoncg.com

S.170076

