



OFFICE SPACE AVAILABLE IN ARLINGTON | FOR LEASE

9000 Regency Square Blvd
Jacksonville, FL 32211

KAYLA DEGUZMAN
D - 904.302.6930
M - 904.208.1168
kayla@cantrellmorgan.com



LEASE DETAILS

PROPERTY OVERVIEW

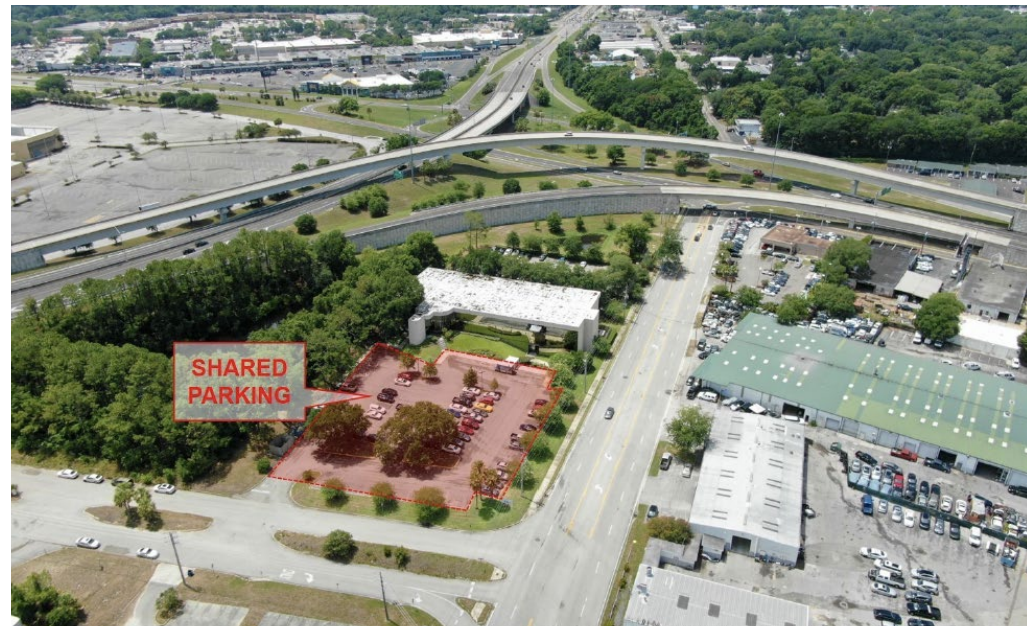
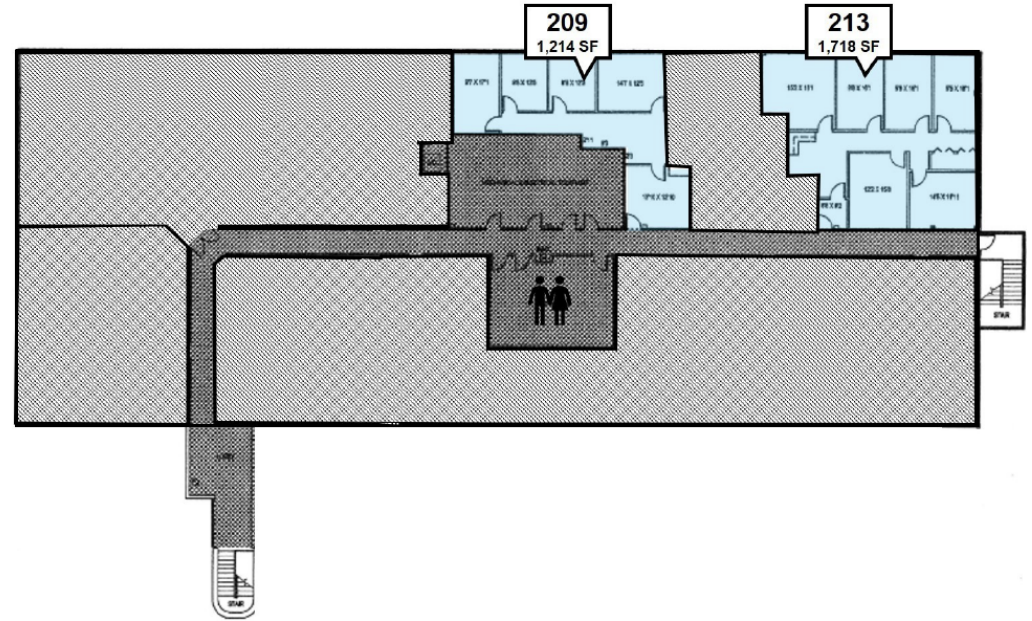
Cantrell & Morgan is pleased to be exclusively listing 9000 Regency Square Blvd. This beautiful 3 story glass building has multiple suites available for lease on the second floor. The building is located near the intersection of the Arlington Expressway and Southside Boulevard in the area of the Regency Mall within the new Kendall Town Center and minutes away from the downtown area.

PROPERTY DETAILS

- Ample shared parking
- Magnetic card security system that records every entry and exit
- Beautiful thermopane glass exterior that provides natural light without heat
- Monument signage available
- Renovated in 2009
- Easy access to Arlington Exwy and Southside Blvd
- CCG-1 zoning

AVAILABLE SPACES

Space	Size	Lease Rate
Suite 209	1,214 SF	\$16.50/SF/yr Full Service
Suite 213	1,718 SF	\$16.50/SF/yr Full Service



9000 Regency Square Blvd | Jacksonville, FL 32211

KAYLA DEGUZMAN
D - 904.302.6930
M - 904.208.1168
kayla@cantrellmorgan.com



CENTER PHOTOS

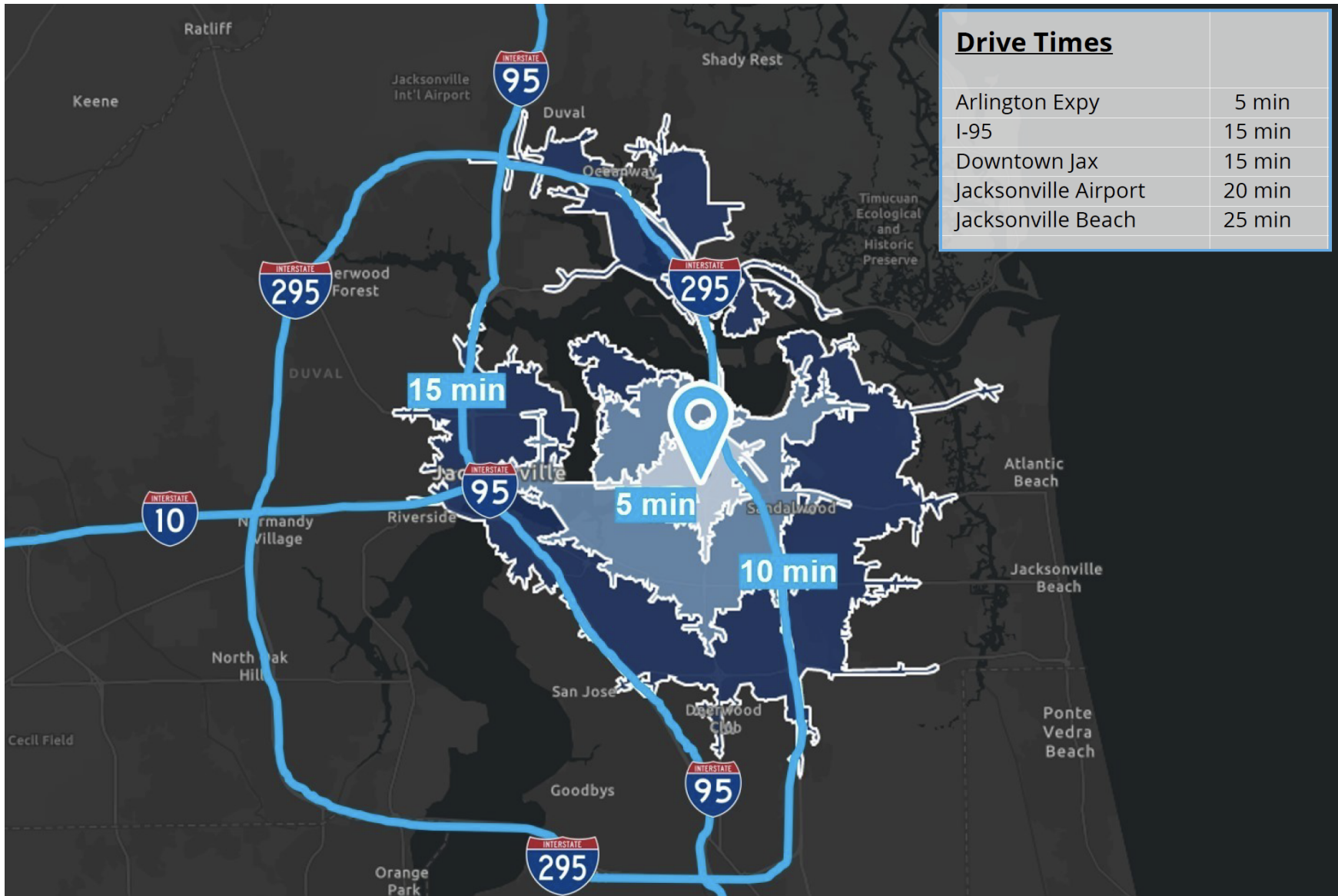


9000 Regency Square Blvd | Jacksonville, FL 32211

KAYLA DEGUZMAN
D - 904.302.6930
M - 904.208.1168
kayla@cantrellmorgan.com



DRIVE TIMES



9000 Regency Square Blvd | Jacksonville, FL 32211

KAYLA DEGUZMAN
 D - 904.302.6930
 M - 904.208.1168
kayla@cantrellmorgan.com



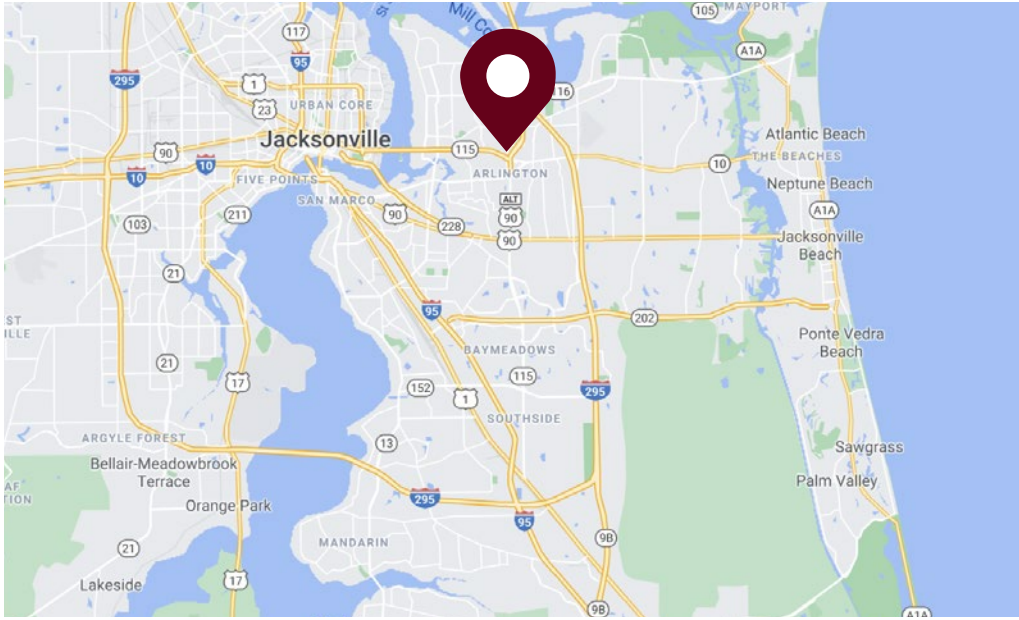
SUB-MARKET OVERVIEW



9000 Regency Square Blvd | Jacksonville, FL 32211

KAYLA DEGUZMAN
D - 904.302.6930
M - 904.208.1168
kayla@cantrellmorgan.com





DEMOGRAPHICS

	3 MILES	5 MILES
2019 Population	89,426	206,143
2024 Projected Population	94,369	218,313
Households	35,799	80,416
Average Household Income	\$60,496	\$65,869
Median Age	36.3	36.0



9000 Regency Square Blvd | Jacksonville, FL 32211

KAYLA DEGUZMAN
 D - 904.302.6930
 M - 904.208.1168
 kayla@cantrellmorgan.com

