

# ±41,200 SF SUNNYVALE, CA

690 Kifer Rd., Sunnyvale, CA 94086



## UNIQUE WAREHOUSE AVAILABLE

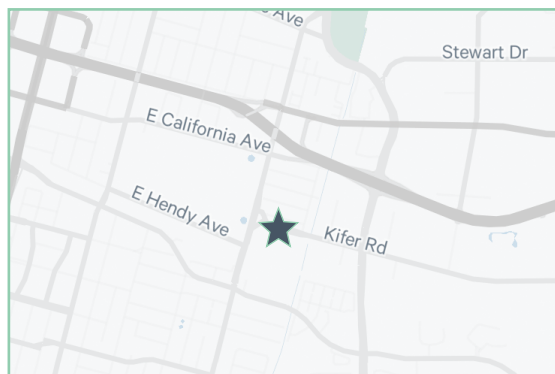


### DAILY TRAFFIC CONDITIONS

TRAFFIC COUNT	DAILY TRAFFIC
Count	7,436
Street	Kifer Rd.

### DEMOGRAPHICS - 2024

	1 MILE	3 MILE
Estimated Population	30,822	219,987
Average HH Income	\$228,989	\$239,563
Estimated Households	12,415	83,778



### PROPERTY HIGHLIGHTS

- ±41,200 SF adjacent to The Home Depot along Kifer Rd.
- ±1,520 SF Office, Break room, and Restrooms
- 5 Dock High Doors
- ±27' Clear Height
- ESFR Rated Fire Sprinkler System
- Parking: 20 Spaces

#### BRUCE HAMOUS

Vice President

Lic. # 01073432

1+ 818 636 8600

BHamous@Retail-PA.com

#### MATT KIRCHER

Executive Vice President

Lic. # 01037365

+1 415 772 0123

matt.kircher@cbre.com

#### BOB STEINBOCK

Senior Vice President

Lic. # 01111853

+1 408 453 7424

bob.steinbock@cbre.com

#### RICK SHAFFER

Senior Vice President

Lic. # 00853889

+1 408 453 7430

rick.shaffer@cbre.com

RPA  
RETAIL PROPERTY ADVISORS

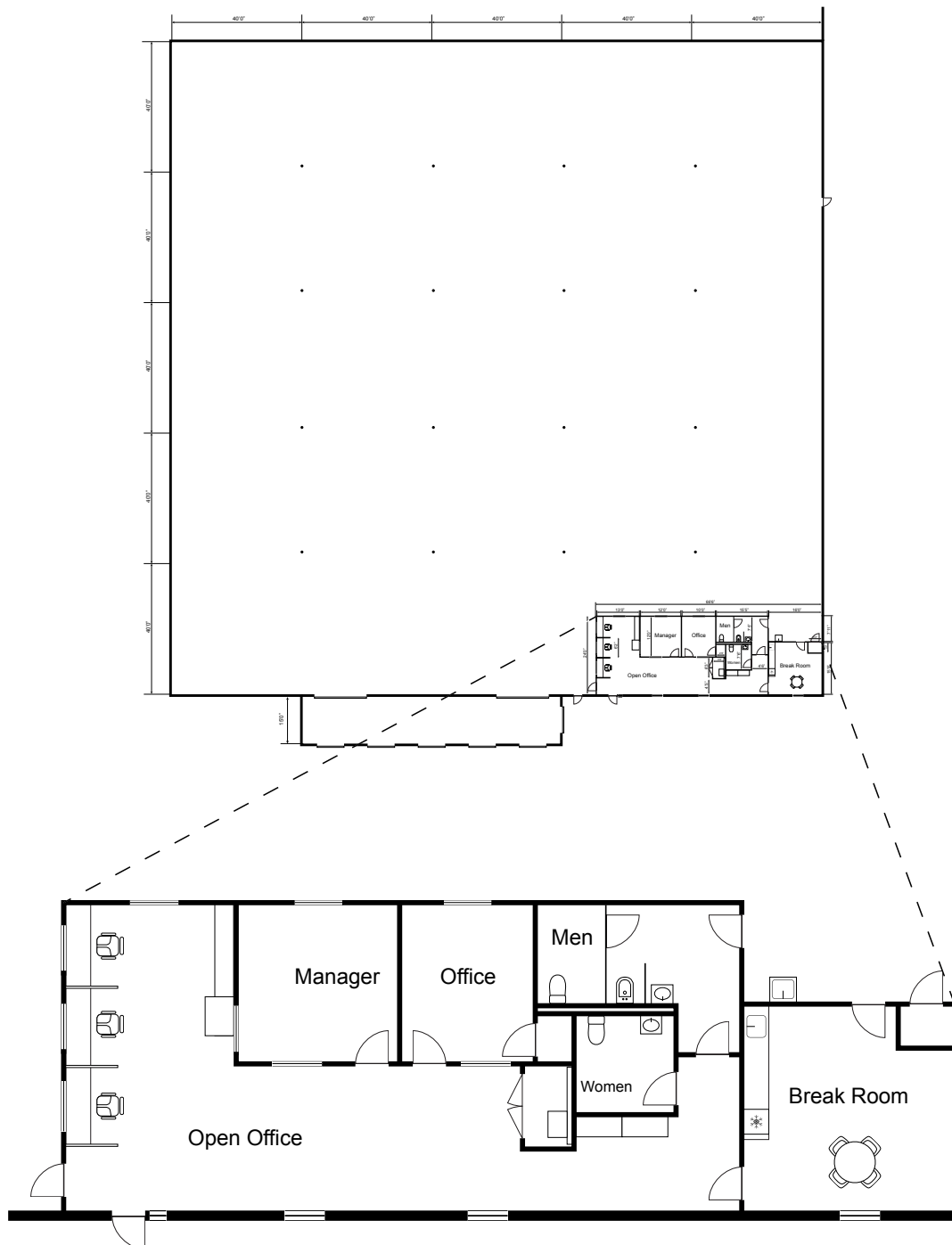
CBRE

© 2024 CBRE, Inc. All rights reserved. This information has been obtained from sources believed reliable but has not been verified for accuracy or completeness. CBRE, Inc. makes no guarantee, representation or warranty and accepts no responsibility or liability as to the accuracy, completeness, or reliability of the information contained herein. You should conduct a careful, independent investigation of the property and verify all information. Any reliance on this information is solely at your own risk without the express written content of the owner is prohibited.

690 Kifer Rd., Sunnyvale, CA 94086



## FLOOR PLAN



**BRUCE HAMOUS**

## Vice President

Lic. # 01073432

1+ 818 636 8600

BHamous@Retail-PA.com

**MATT KIRCHER**

Executive Vice President

Lic. # 01037365

+1 415 772 0123

matt.kircher@cbre.com

**BOB STEINBOCK**

## Senior Vice President

Lic. # 01111853

+1 408 453 7424

bob.steinbock@cbre.com

## RICK SHAFFER

## Senior Vice President

Lic. # 00853889

+1 408 453 7430

rick.shaffer@cbre.com

**RPA**  
RETAIL PROPERTY ADVISORS

**CBRE**

© 2024 CBRE, Inc. All rights reserved. This information has been obtained from sources believed reliable but has not been verified for accuracy or completeness. CBRE, Inc. makes no guarantee, representation or warranty and accepts no responsibility or liability as to the accuracy, completeness, or reliability of the information contained herein. You should conduct a careful, independent investigation of the property and verify all information. Any reliance on this information is solely at your own risk without the express written content of the owner is prohibited.

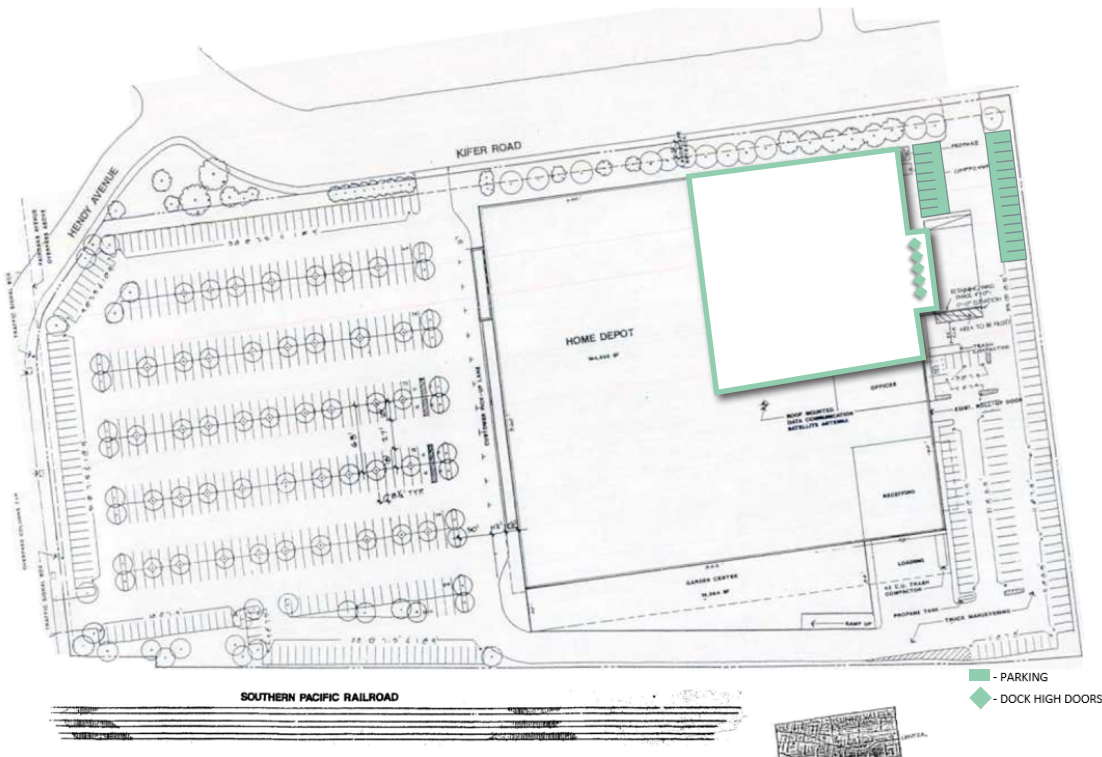
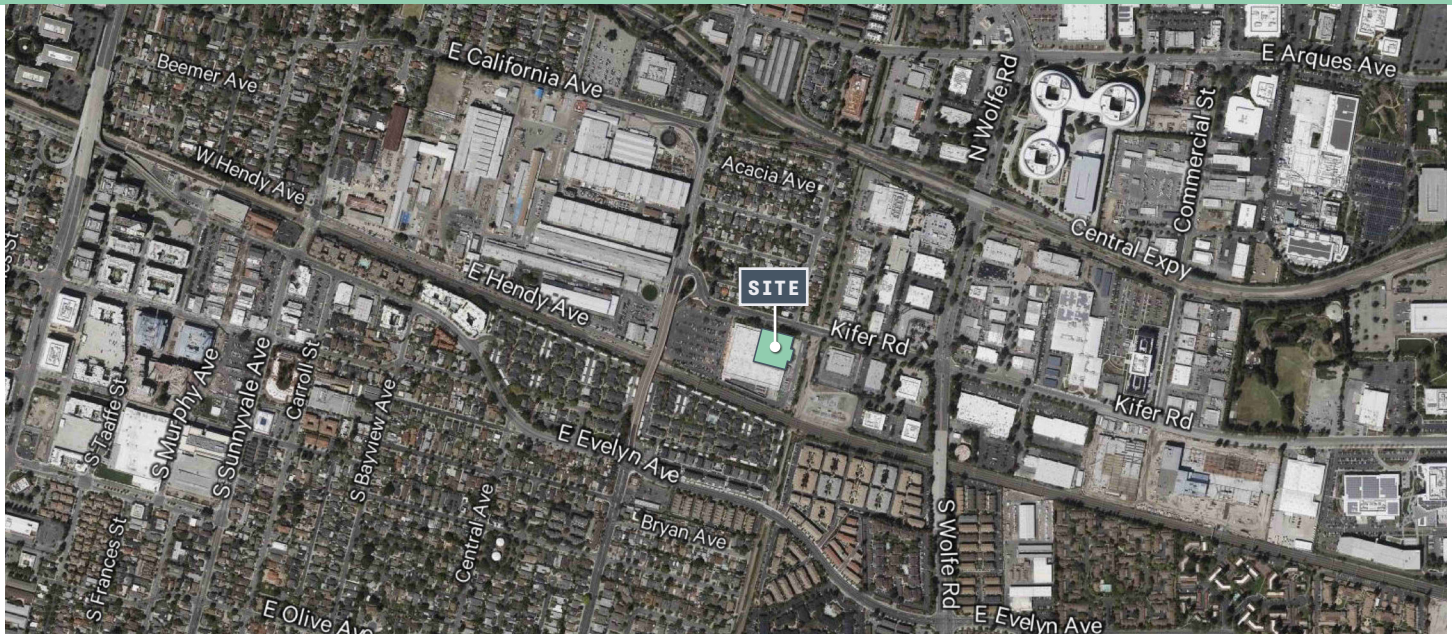


# ±41,200 SF SUNNYVALE, CA

690 Kifer Rd., Sunnyvale, CA 94086



## LOCATION MAPS



### BRUCE HAMOUS

Vice President

Lic. # 01073432

1+ 818 636 8600

BHamous@Retail-PA.com

### MATT KIRCHER

Executive Vice President

Lic. # 01037365

+1 415 772 0123

matt.kircher@cbre.com

### BOB STEINBOCK

Senior Vice President

Lic. # 01111853

+1 408 453 7424

bob.steinbock@cbre.com

### RICK SHAFFER

Senior Vice President

Lic. # 00853889

+1 408 453 7430

rick.shaffer@cbre.com

RPA  
RETAIL PROPERTY ADVISORS

CBRE

© 2024 CBRE, Inc. All rights reserved. This information has been obtained from sources believed reliable but has not been verified for accuracy or completeness. CBRE, Inc. makes no guarantee, representation or warranty and accepts no responsibility or liability as to the accuracy, completeness, or reliability of the information contained herein. You should conduct a careful, independent investigation of the property and verify all information. Any reliance on this information is solely at your own risk without the express written content of the owner is prohibited.