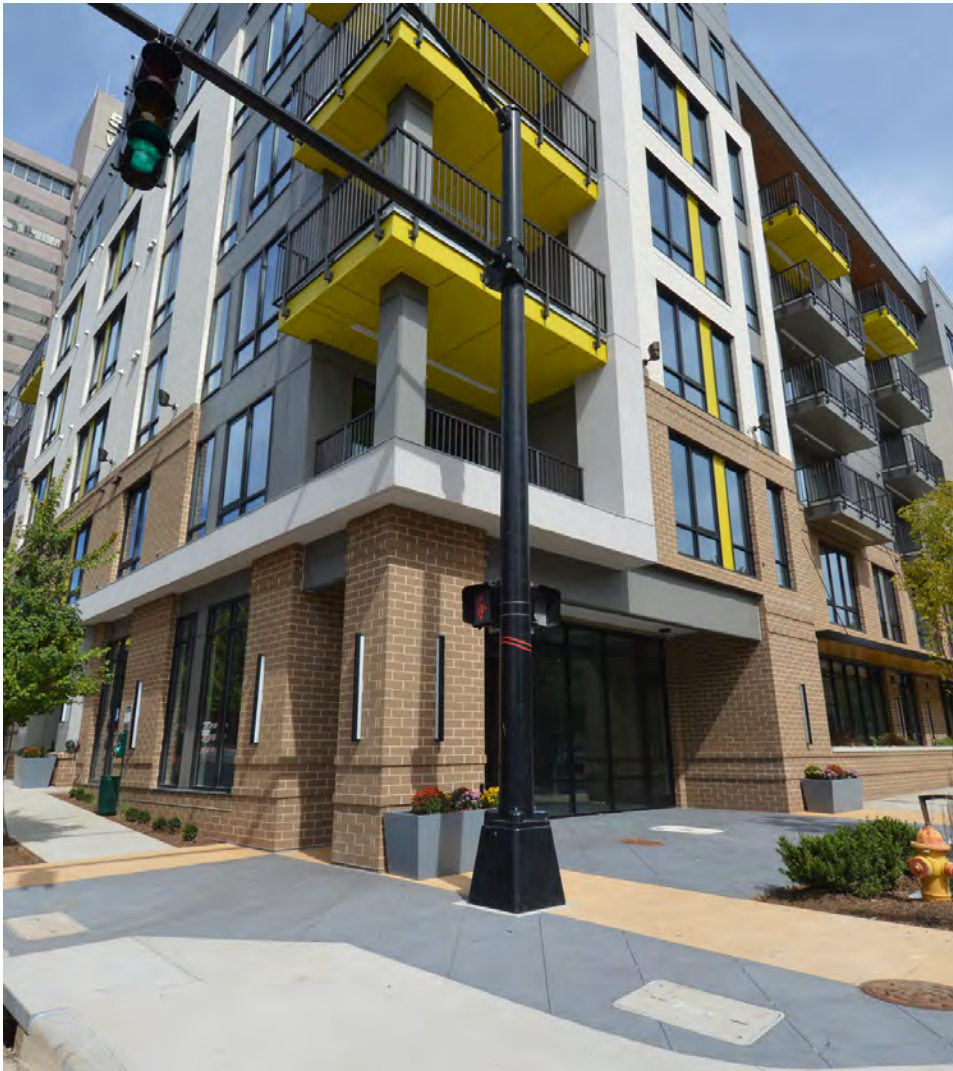


# 501 WEST 4TH STREET - WINSTON-SALEM, NC

RETAIL PROPERTY FOR LEASE



**501 WEST 4TH STREET**  
WINSTON-SALEM, NC 27101

## PROPERTY DESCRIPTION

Prime retail location in downtown Winston-Salem! The  $\pm 1,255$  SF suite is located on the corner of W. 4th Street and Poplar Street. The suite has an open layout, tons of natural light, an industrial aesthetic, and a private restroom. The space has previously been used as a photography studio. Steps away from all of the great restaurants, retailers, and bars that downtown Winston-Salem has to offer.

## PROPERTY HIGHLIGHTS

Property Type	Retail
Available SF	$\pm 1,255$ SF
Lease Rate	Contact Broker For Pricing

Katie Hayes

336.473.0206  
katie@ltpcommercial.com

Taryne Seatz

828.406.6858  
tseatz@ltpcommercial.com

**Linville | Team Partners**  
COMMERCIAL REAL ESTATE

WINSTON-SALEM, NC

L | T

# 501 WEST 4TH STREET - WINSTON-SALEM, NC

RETAIL PROPERTY FOR LEASE



Katie Hayes

336.473.0206

katie@ltpcommercial.com

Taryne Seatz

828.406.6858

tseatz@ltpcommercial.com

**Linville | Team Partners**  
COMMERCIAL REAL ESTATE



# 501 WEST 4TH STREET - WINSTON-SALEM, NC

RETAIL PROPERTY FOR LEASE



Katie Hayes

336.473.0206

katie@ltpcommercial.com

Taryne Seatz

828.406.6858

tseatz@ltpcommercial.com

Linville | Team Partners

COMMERCIAL REAL ESTATE



# 501 WEST 4TH STREET - WINSTON-SALEM, NC

RETAIL PROPERTY FOR LEASE

## LOCATION INFORMATION

Street Address	501 West 4th Street
City, State, Zip	Winston-Salem, NC 27101

## PROPERTY INFORMATION

Property Type	Retail
Zoning	CB WO
Lot Size	1.33 Acres
Year Built	2021
Available SF	±1,255 SF
Exterior Walls	Brick Veneer
Tax Pin	6835-07-8066
Tax Lot/Block	304B/0082

**LEASE RATE: CONTACT  
BROKER FOR PRICING**



Katie Hayes

336.473.0206  
katie@ltpcommercial.com

Taryne Seatz

828.406.6858  
tseatz@ltpcommercial.com

The information contained herein has been taken from sources deemed to be reliable. Linville Team Partners makes no representation or warranties, expressed or implied, as to the accuracy of this information. All information in this document is subject to verification prior to purchase or lease.

**Linville | Team Partners**  
COMMERCIAL REAL ESTATE