

2228 Wadsworth Road, Waukegan, IL

10.02 Acres Available



INDUSTRIAL ZONED LAND

FOR SALE: 10.02 Acres with Two Buildings

AVAILABLE: 10.02 Acres

BUILDING: 3,000 SF Storage Bldg; 1,500 SF House/Office

ZONING: Industrial (I-1)

TAXES: \$6,438 (2024)

FOR SALE: \$1,750,000 (\$4.00 PSF on Land Price)

- Landscaping and Nursery Property
- Great for Landscapers, Nurseries, Potential Trucking, Self Storage, Contractors Yard
- Car Count 16,500
- High Visibility
- Great Signage
- Directly Across from Waukegan Airport



SCAN FOR LISTING

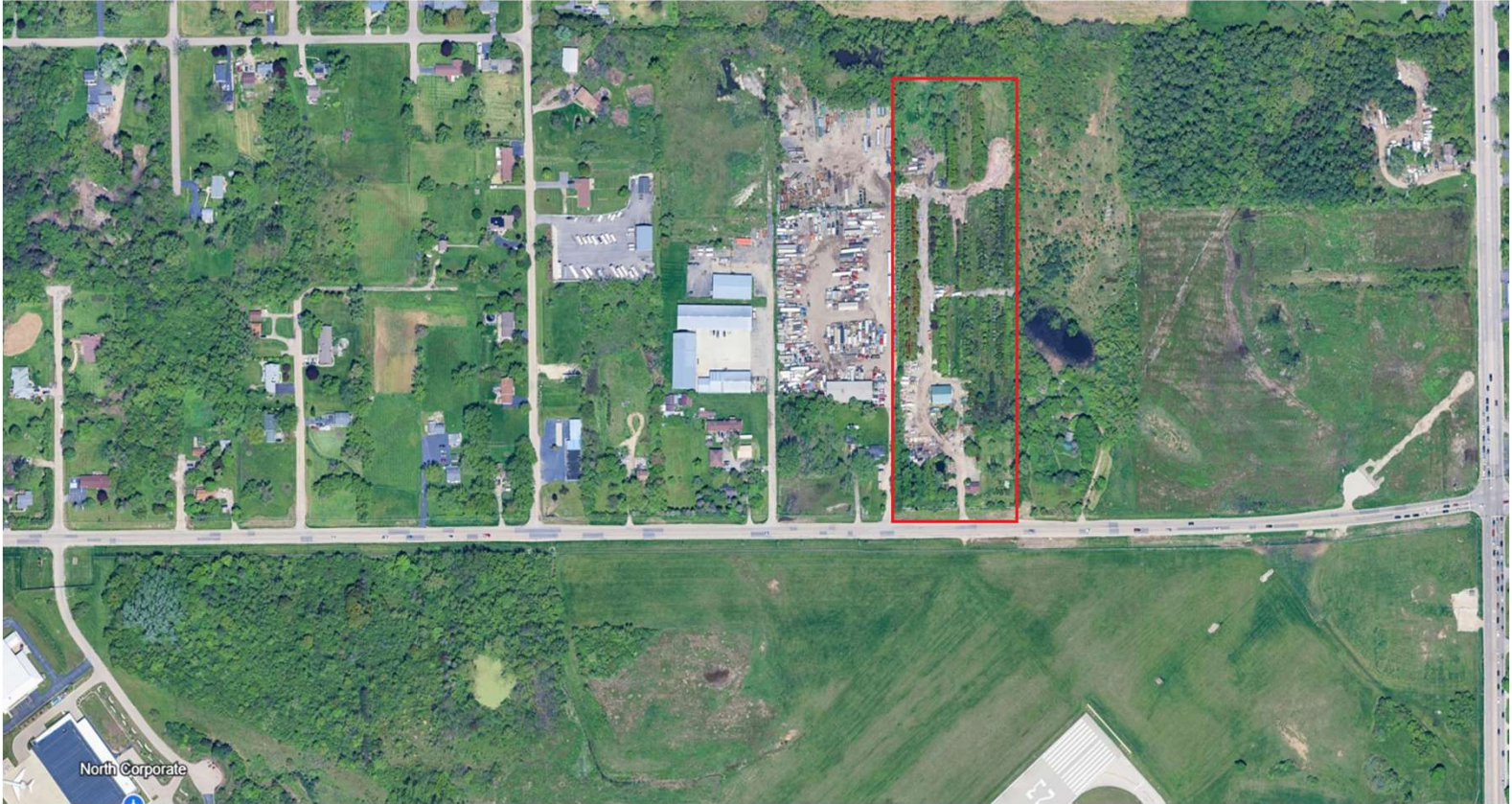


ENTRE
Commercial Realty LLC

Brian Bocci, SIOR
847-310-4296
bbocci@entrecommercial.com

The information contained herein is from sources deemed reliable but is submitted subject to errors, omissions and to change of price or terms without notice.

PHOTOS

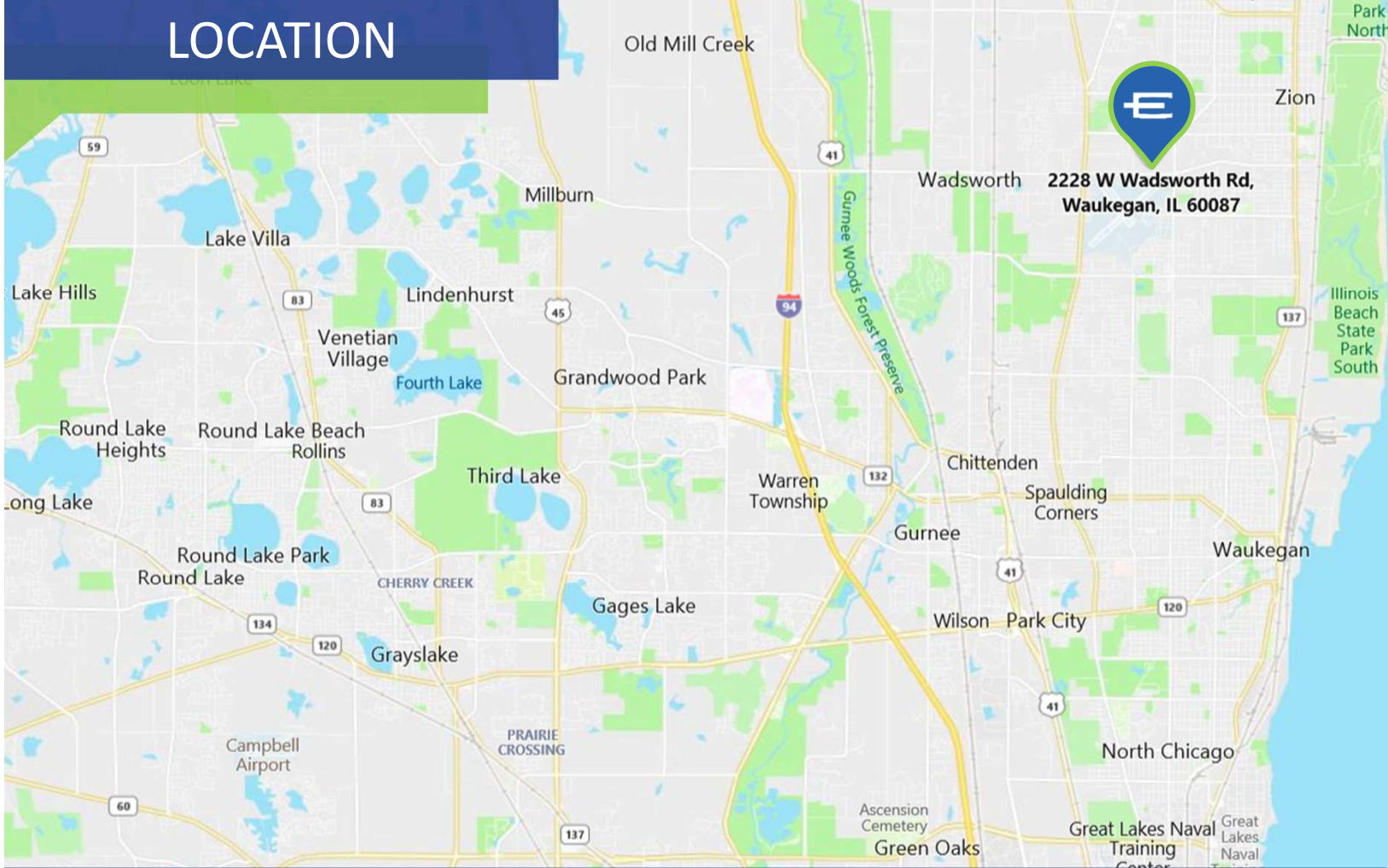


ENTRE
Commercial Realty LLC

Brian Bocci, SIOR
847-310-4296
bbocci@entrecommercial.com

The information contained herein is from sources deemed reliable but is submitted subject to errors, omissions and to change of price or terms without notice.

LOCATION



2228 Wadsworth Road, Waukegan, IL

