

FOR SALE



INDUSTRIAL / FLEX

2732 6TH AVE. S
ST. PETERSBURG, FL
33712

VECTOR
COMMERCIAL REAL ESTATE SERVICES

EXECUTIVE SUMMARY

PROPERTY OVERVIEW

Located in St. Petersburg's Warehouse Arts District, 2732 6th Avenue South is a 2,368-square-foot industrial space offering a blend of creative energy and versatile use. The property features conditioned front space, flex space, grade-level loading, 220V power, and one grade-level door. Zoned Industrial Traditional (IT), it's ideal for studios, fabrication, live-work use, or small creative businesses. Surrounded by galleries, makers, and innovative enterprises—and located minutes from downtown St. Petersburg—this property delivers a unique opportunity to establish a presence in one of the city's most dynamic cultural hubs.



LOCATION
2732 4TH AVENUE S
ST. PETERSBURG, FL
33712



PARCEL ID
23-31-16-17298-010-0150



PROPERTY SIZE
2,368 SF



ZONING
Industrial Traditional
IT



PRICING
\$727,000



USE
industrial/Flex

o o o o

AERIAL MAP

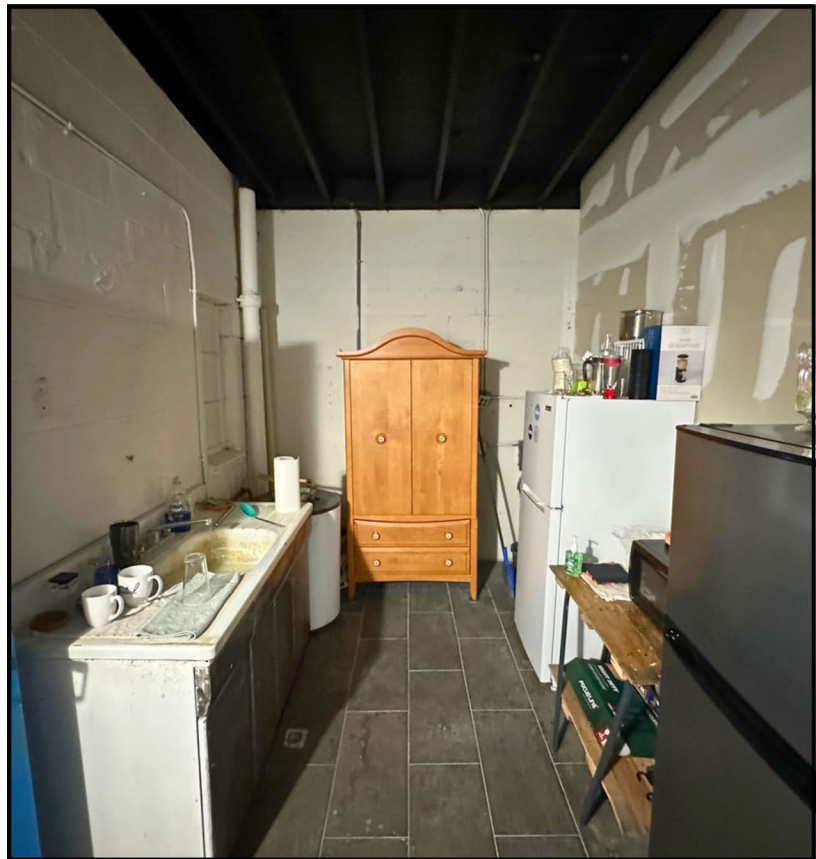
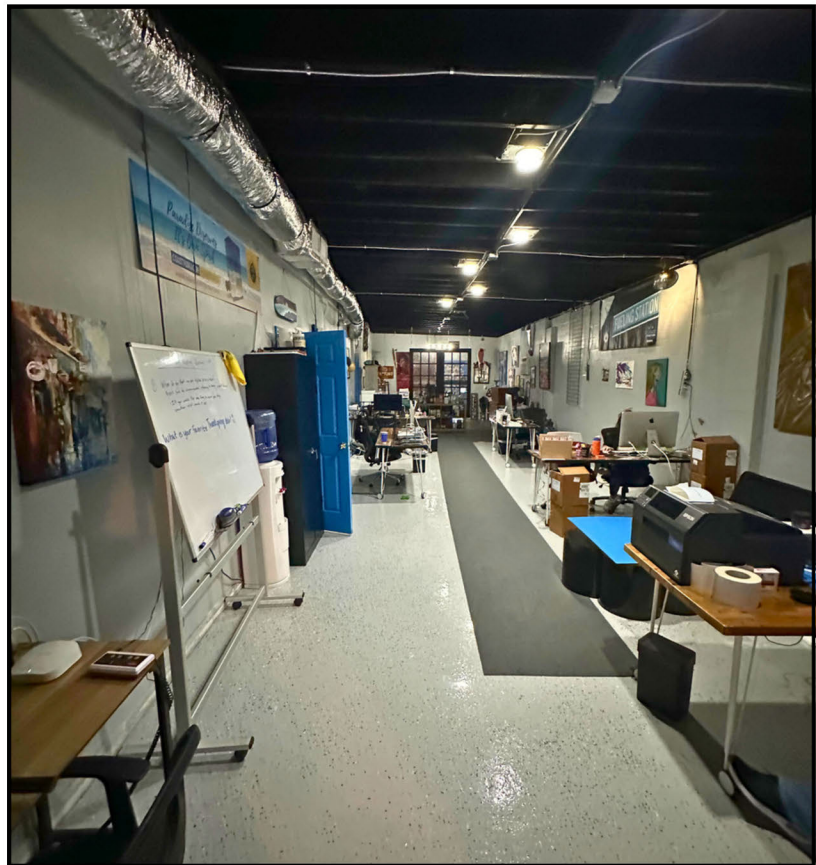
6TH AVE SOUTH



28TH STREET SOUTH

27TH STREET SOUTH

2,368-SF



Vector Commercial Real Estate Services, LLC is a licensed Real Estate Brokerage. No warranties or representations, express or implied, are made as to the accuracy of the information contained herein, and same is submitted subject to omissions, changes of price, rental or other conditions, withdrawal without notice, and to any other limitations imposed by our principals.

o o o o

CONTACT US



MONTANA MASSA

(386) 295-2989

MMASSA@VECTORREALTY.COM



MICHAEL HERETICK

(727) 692-3034

MHERETICK@VECTORREALTY.COM

We look forward to working with you



125 5th Street South
St. Petersburg, FL 33701



(727)823-1230



www.VectorRealty.com



VECTOR
COMMERCIAL REAL ESTATE SERVICES