

5600 MAPLE ROAD  
WEST BLOOMFIELD, MICHIGAN

OFFICE/MEDICAL FOR LEASE  
563 & 739 Square Feet Available



**SIGNATURE  
ASSOCIATES**  
KNOW SIGNATURE | KNOW RESULTS

**TANBARK BUILDING**



## PROPERTY FEATURES

- 563 & 739 square foot suites available
- Well maintained multi-tenant complex
- Move in ready office suites
- Located in a very desirable area
- Convenient and ample parking
- Gross leases – utilities included



For more information, please contact:

**JASON STOUGH**  
(248) 948 4180  
jstough@signatureassociates.com

**DAN MORROW**  
(248) 799 3144  
dmorrow@signatureassociates.com

**SIGNATURE ASSOCIATES**  
One Towne Square, Suite 1200  
Southfield, MI 48076  
www.signatureassociates.com

## AVAILABILITY

SUITES	SIZE (SF)	PRICE/MONTH
214B	563	\$800
402D	739	\$1,100

For more information, please contact:

**JASON STOUGH**  
(248) 948 4180  
jstough@signatureassociates.com

**DAN MORROW**  
(248) 799 3144  
dmorrow@signatureassociates.com

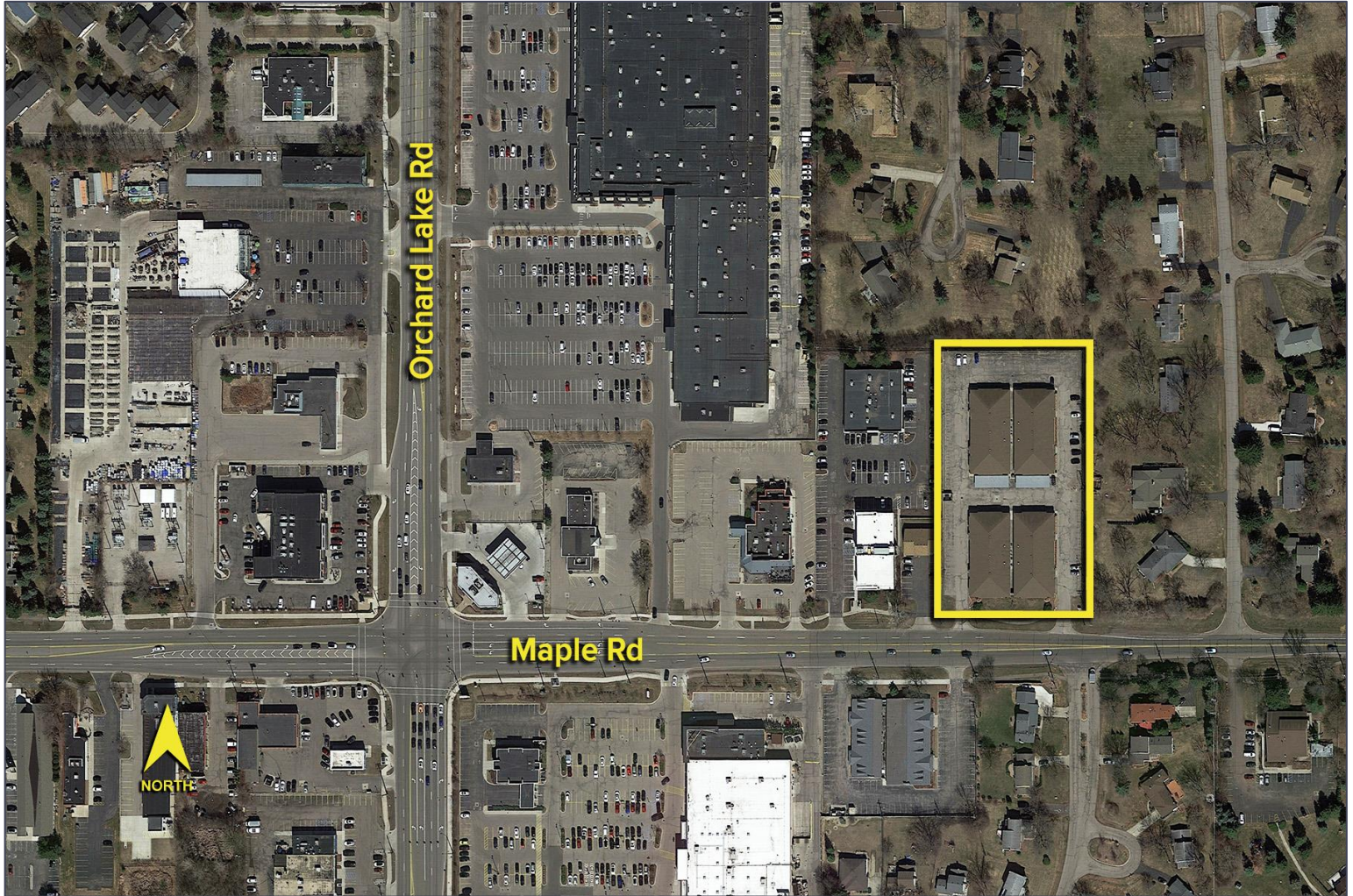
**SIGNATURE ASSOCIATES**  
One Towne Square, Suite 1200  
Southfield, MI 48076  
www.signatureassociates.com

# 5600 Maple Road – West Bloomfield, Michigan

Office For Lease

563 & 739  
Square Feet  
AVAILABLE

Aerial



For more information, please contact:

**JASON STOUGH**

(248) 948 4180

[jstough@signatureassociates.com](mailto:jstough@signatureassociates.com)

**DAN MORROW**

(248) 799 3144

[dmorrow@signatureassociates.com](mailto:dmorrow@signatureassociates.com)

**SIGNATURE ASSOCIATES**

One Towne Square, Suite 1200

Southfield, MI 48076

[www.signatureassociates.com](http://www.signatureassociates.com)