



SHOPPES AT WOODCREEK

5160 SUNSET LAKE RD. | APEX, NC



PROPERTY DETAILS

- » Suite 105: 1,213 SF
- » Second generation self-service bank branch
- » Located at the intersection of Sunset Lake Road & Holly Springs Road
- » Great visibility on Holly Springs Road in close proximity to future NC-540 interchange exit
- » Cotenants include: Edwards Jones, Shakey Ray's Tavern, Osteria G Italian Restaurant, Trinity Life Care Center, Imagine That Learning Center

LEASE RATE

\$26.00 PSF, NNN
TICAM: \$6.05 psf

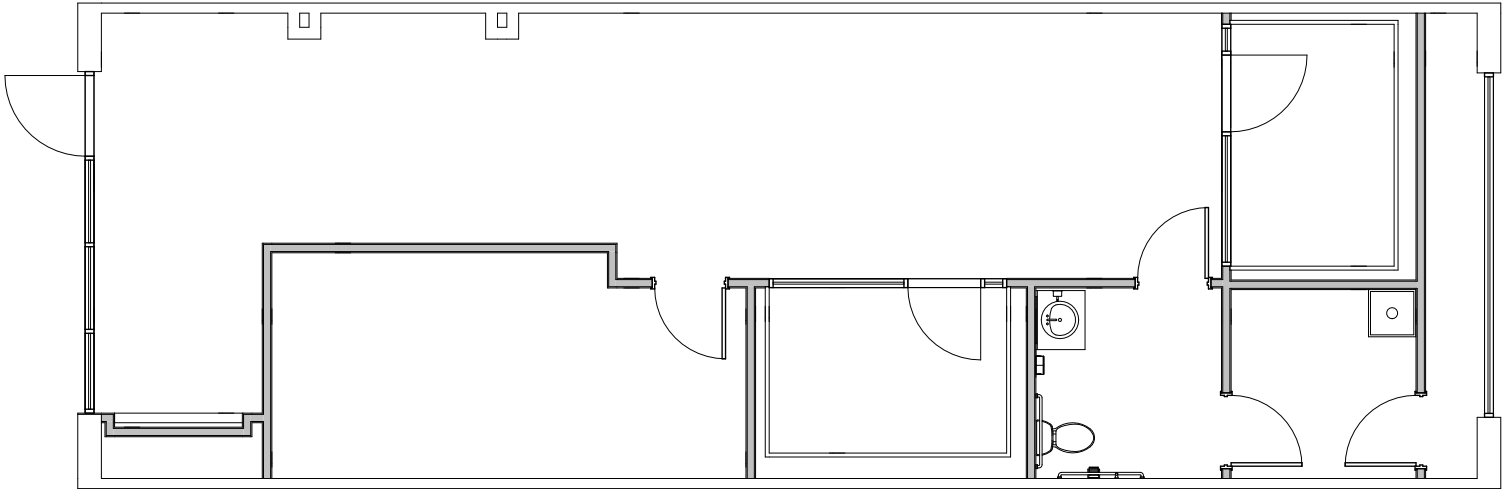
FOR MORE INFO, CONTACT

MICHAEL EDWARDS | michael@edwardscore.com | 919.605.3715 (Owner/Broker)
GARRETT LEWIS | glewis@trinity-partners.com | 919.360.6108
ZACH MILLER | zmiller@trinity-partners.com | 919.418.5449





SUITE 105: 1,213 SF



SHOPPES AT WOODCREEK

TRINITY
PARTNERS



SHOPPES AT WOODCREEK



DEMOGRAPHICS

	1 MILE	3 MILE	5 MILE
TOTAL BUSINESSES	138	1,282	3,419
TOTAL EMPLOYEES	933	11,067	37,315
POPULATION	5,413	55,271	124,039
HOUSEHOLDS (HH)	1,814	18,809	43,377
MEDIAN HH INCOME	\$150,233	\$126,810	\$121,631

TRAFFIC COUNTS

Sunset Lake Rd	13,500 VPD
Optimist Farm Rd	11,000 VPD
Holly Springs Rd	15,500 VPD



The information contained herein was obtained from sources believed reliable; however, Trinity Partners makes no guarantees, warranties, or representations as to the completeness or accuracy thereof. The presentation of this property is submitted subject to errors, omissions, changes of price or conditions prior to sale or lease, or withdrawal without notice.

FOR MORE INFO, CONTACT

MICHAEL EDWARDS | michael@edwardscore.com | 919.605.3715 (Owner/Broker)

GARRETT LEWIS | glewis@trinity-partners.com | 919.360.6108

ZACH MILLER | zmill@trinity-partners.com | 919.418.5449

TRINITY
PARTNERS