

# FOR SALE

2402 W. FAYETTE STREET | BALTIMORE

ASKING PRICE:

# \$325,000

## PROPERTY SUMMARY

GROSS BUILDING AREA: 3,423 SF

LOT AREA: 12,850 SF (0.295 acres)

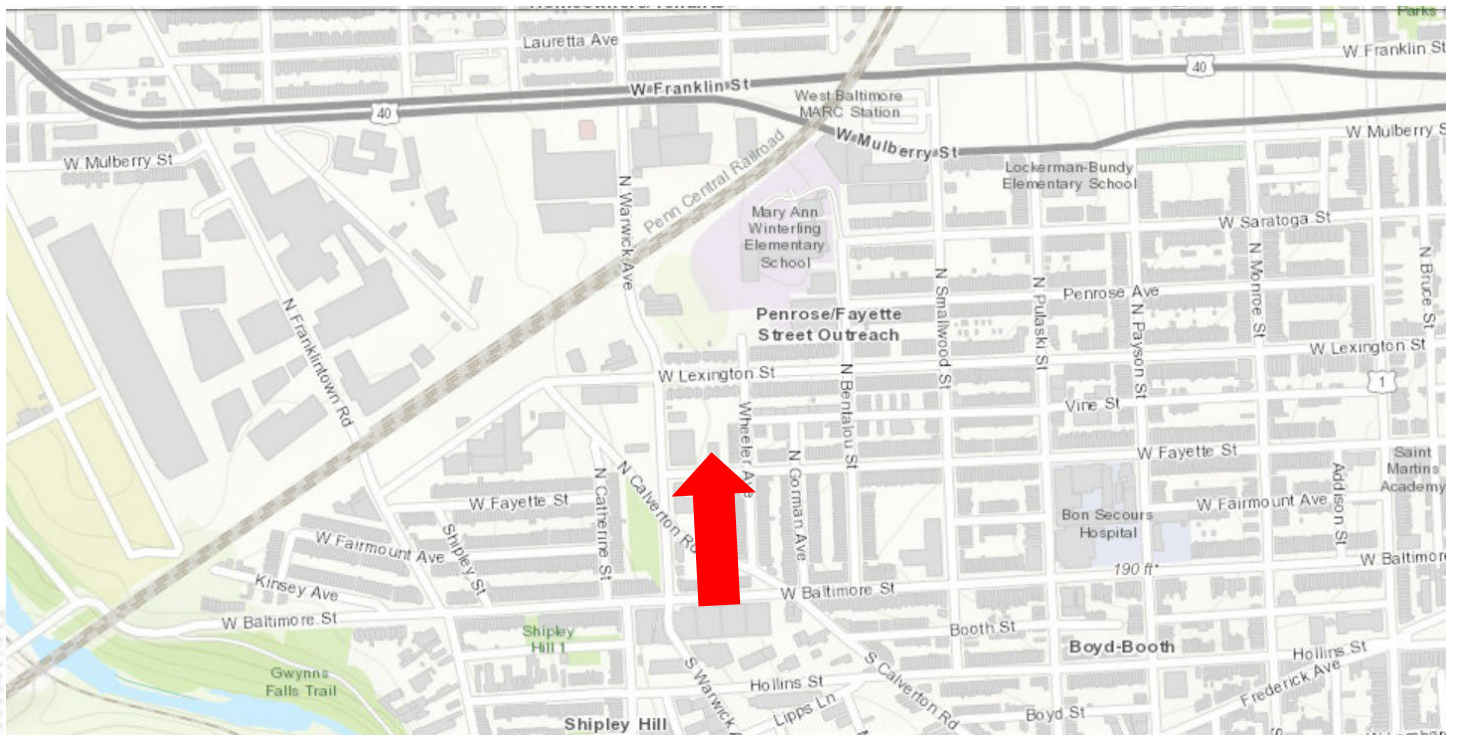
ZONING: R-8, Residential District.

YEAR BUILT: 1950

SPACE USE: Church

NEIGHBORHOOD: Penrose/ Fayette  
Street Outreach

PARKING: 7 spaces, off-street



**DOUGLAS R. KINGTON**  
Broker/Co-Owner  
(410) 630-1240 x1  
doug@crelogic.net

**RE/MAX**  
COMMERCIAL®

**WENDY L. BLAIR**  
Managing Director  
(410) 630-1240 x2  
wendy@crelogic.net

Disclaimer: While REMAX Commercial Logic has relied upon sources that it reasonably believes are reliable, Kington Commercial, LLC makes no representations or warranty, express or implied, as to the accuracy of the information contained herein. This document is submitted subject to errors, omissions, change of price and other conditions, and withdrawal without notice as imposed by our principals. Each Office Independently Owned and Operated.

# PROPERTY INFO.

PROPERTY ADDRESS:	2402 West Fayette Street, Baltimore, Maryland 21223
TAX ID:	20-14-2163-004
OWNER:	The Church of the Living God The Pillar and Ground of the Truth Which He Purchased with His Own Blood
COMMUNITY:	Penrose / Fayette Street Outreach
GROSS BUILDING AREA:	3,423 SF
LAND PARCEL:	12,850 SF (0.295 acres)
BUILT :	1950
HEIGHT:	One story
CONSTRUCTION:	Brick and masonry block walls, steel frame.
ZONING:	R-8, Residential Rowhouse District
CURRENT USE:	Religious Facility
PARKING:	7 spaces on paved lot on the west side of property. Additional parking could be created by paving rear yard, which is currently a mixture of paving and grass.

Radius	1 - Mile	2 - Mile	Radius	1 - Mile	2 - Mile
<u>Population</u>			<u>2024 HH Income</u>		
2029 Projection	37,000	118,427	Average	\$46,184	\$54,833
2024 Estimate	36,113	118,925	Median	\$33,937	\$38,650
2020 Census	26,322	104,115	<u>2024 Race &amp; Ethnicity</u>		
<u>Households</u>			Black	29,853 (82.67%)	94,630 (79.57%)
2029 Projection	14,497	49,906	White	3,357 (9.30%)	14,574 (3.22%)
2024 Estimate	14,177	50,276	Asian	214 (0.59%)	1,863 (1.56%)
2020 Census	10,354	44,352	Hispanic Origin	1,493 (4.13%)	3,837 (3.22%)

**DOUGLAS R. KINGTON**  
 Broker/Co-Owner  
 (410) 630-1240 x1  
 doug@crelogic.net

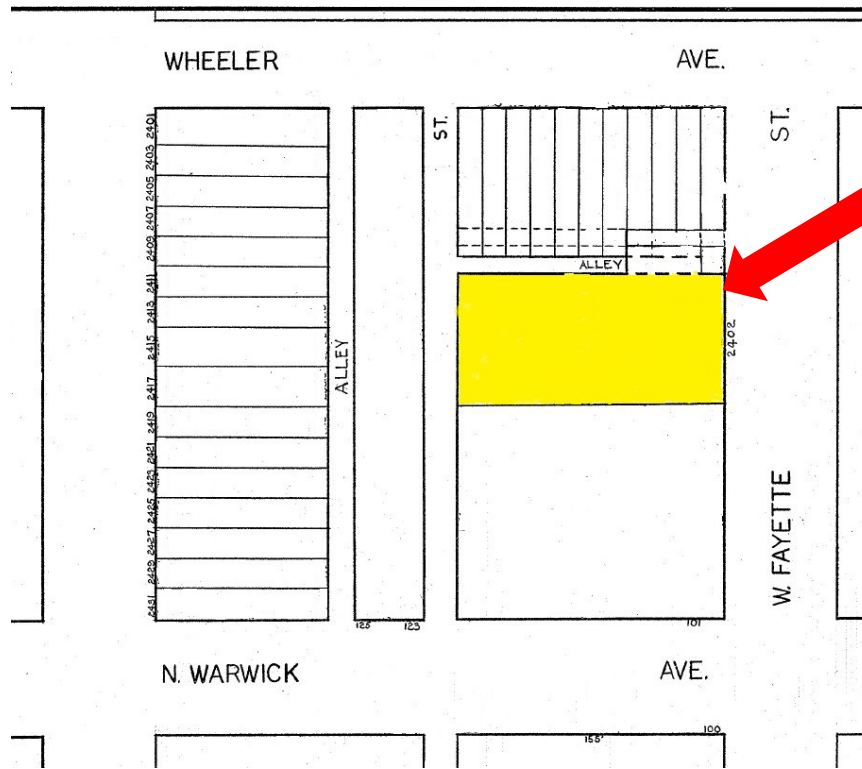


**WENDY L. BLAIR**  
 Managing Director  
 (410) 630-1240 x2  
 wendy@crelogic.net

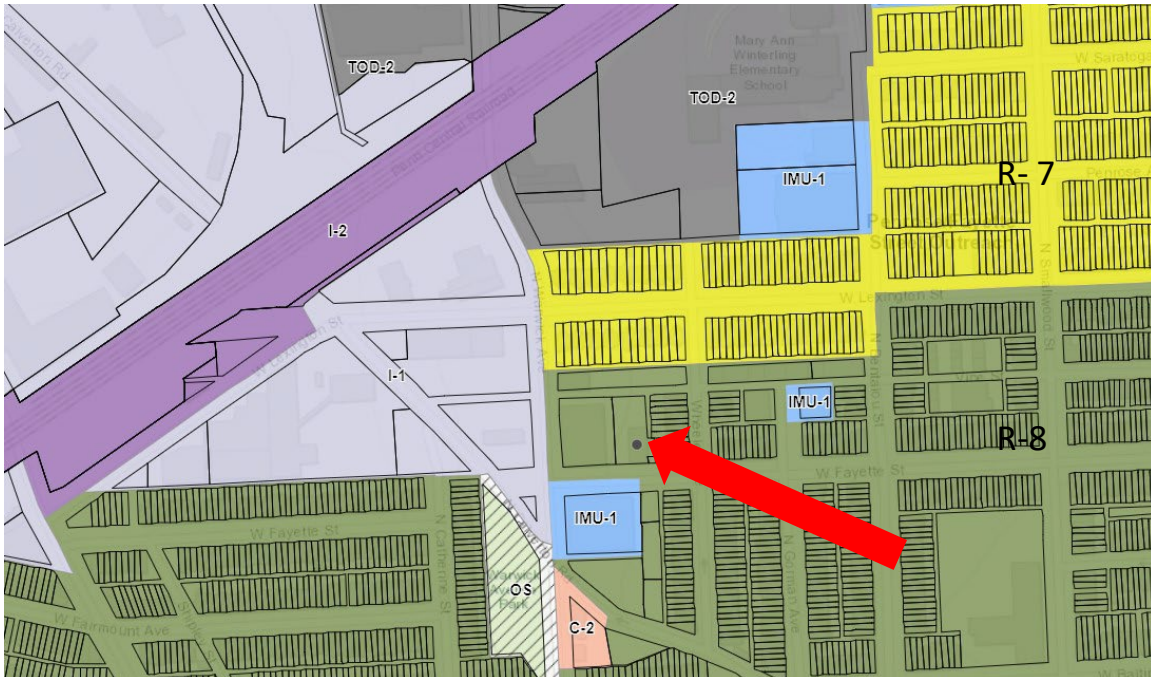
Disclaimer: While REMAX Commercial Logic has relied upon sources that it reasonably believes are reliable, RE/MAX Commercial Logic makes no representations or warranty, express or implied, as to the accuracy of the information contained herein. This document is submitted subject to errors, omissions, change of price and other conditions, and withdrawal without notice as imposed by our principals. Each office independently owned and operated.

# FLOOR PLANS

## BLOCK PLAT



## ZONING MAP



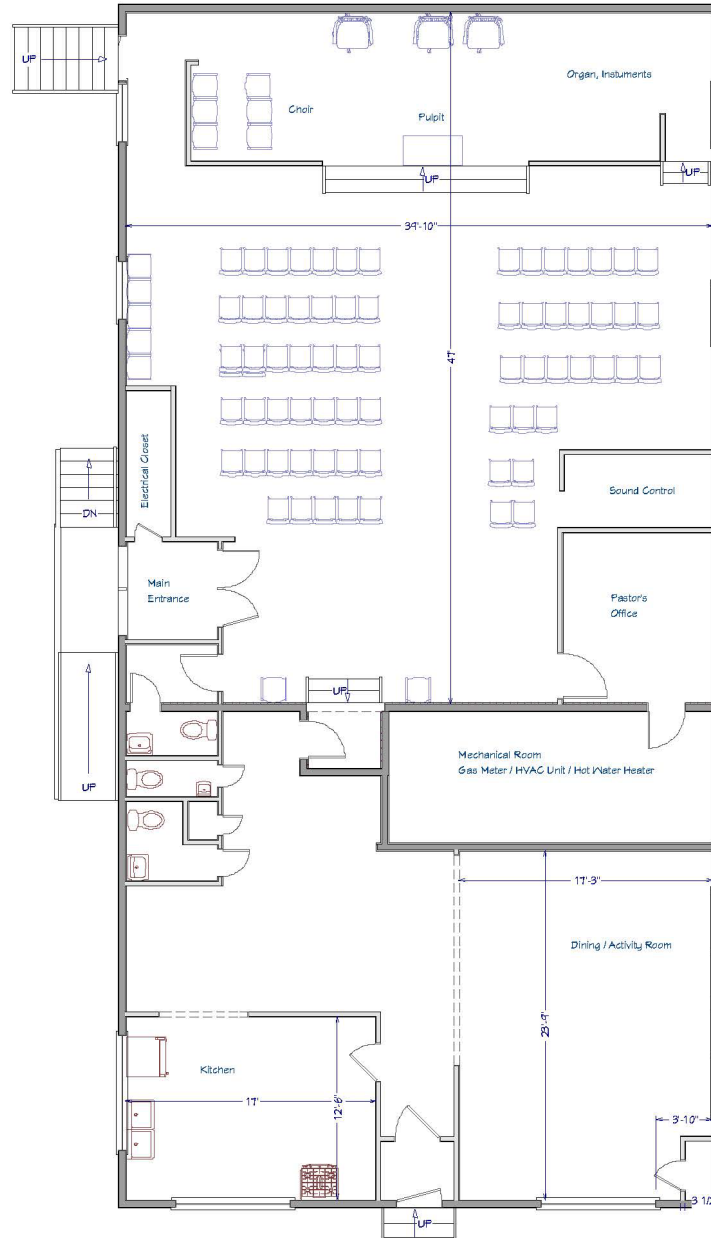
**DOUGLAS R. KINGTON**  
Broker/Co-Owner  
(410) 630-1240 x1  
doug@crelogic.net

**RE/MAX**  
COMMERCIAL®

**WENDY L. BLAIR**  
Managing Director  
(410) 630-1240 x2  
wendy@crelogic.net

Disclaimer: While REMAX Commercial Logic has relied upon sources that it reasonably believes are reliable, RE/MAX Commercial Logic makes no representations or warranty, express or implied, as to the accuracy of the information contained herein. This document is submitted subject to errors, omissions, change of price and other conditions, and withdrawal without notice as imposed by our principals. Each office independently owned and operated.

# FLOOR PLANS



Note: This floor plan is meant for illustrative purposes only. It is not drawn to scale and features shown on the floor plan may or may not exist and may or not convey.

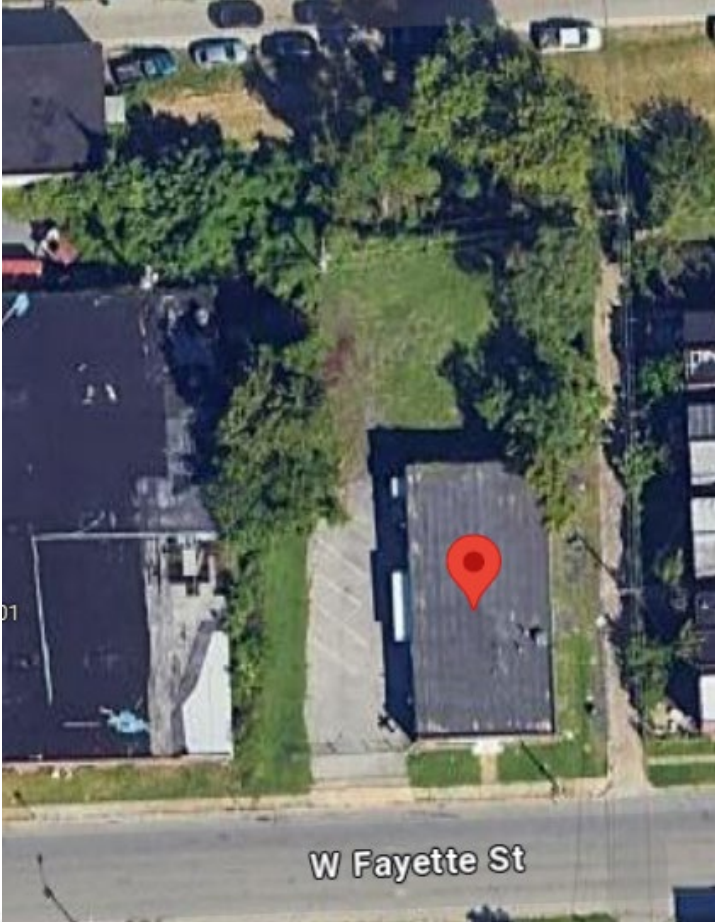
**DOUGLAS R. KINGTON**  
Broker/Co-Owner  
(410) 630-1240 x1  
doug@crelogic.net



**WENDY L. BLAIR**  
Managing Director  
(410) 630-1240 x2  
wendy@crelogic.net

Disclaimer: While REMAX Commercial Logic has relied upon sources that it reasonably believes are reliable, RE/MAX Commercial Logic makes no representations or warranty, express or implied, as to the accuracy of the information contained herein. This document is submitted subject to errors, omissions, change of price and other conditions, and withdrawal without notice as imposed by our principals. Each office independently owned and operated.

# PHOTOGRAPHS



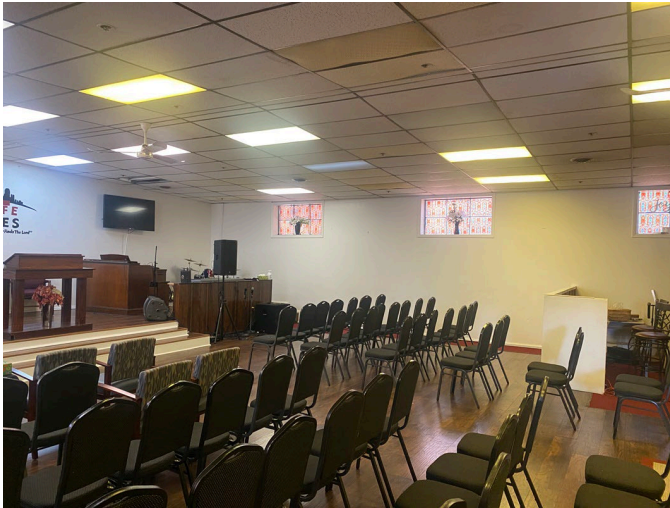
**DOUGLAS R. KINGTON**  
Broker/Co-Owner  
(410) 630-1240 x1  
doug@crelogic.net

**RE/MAX**  
COMMERCIAL®

**WENDY L. BLAIR**  
Managing Director  
(410) 630-1240 x2  
wendy@crelogic.net

Disclaimer: While REMAX Commercial Logic has relied upon sources that it reasonably believes are reliable, RE/MAX Commercial Logic makes no representations or warranty, express or implied, as to the accuracy of the information contained herein. This document is submitted subject to errors, omissions, change of price and other conditions, and withdrawal without notice as imposed by our principals. Each office independently owned and operated.

# PHOTOGRAPHS



**DOUGLAS R. KINGTON**  
Broker/Co-Owner  
(410) 630-1240 x1  
doug@crelogic.net

**RE/MAX**  
COMMERCIAL®

**WENDY L. BLAIR**  
Managing Director  
(410) 630-1240 x2  
wendy@crelogic.net

Disclaimer: While REMAX Commercial Logic has relied upon sources that it reasonably believes are reliable, RE/MAX Commercial Logic makes no representations or warranty, express or implied, as to the accuracy of the information contained herein. This document is submitted subject to errors, omissions, change of price and other conditions, and withdrawal without notice as imposed by our principals. Each office independently owned and operated.