

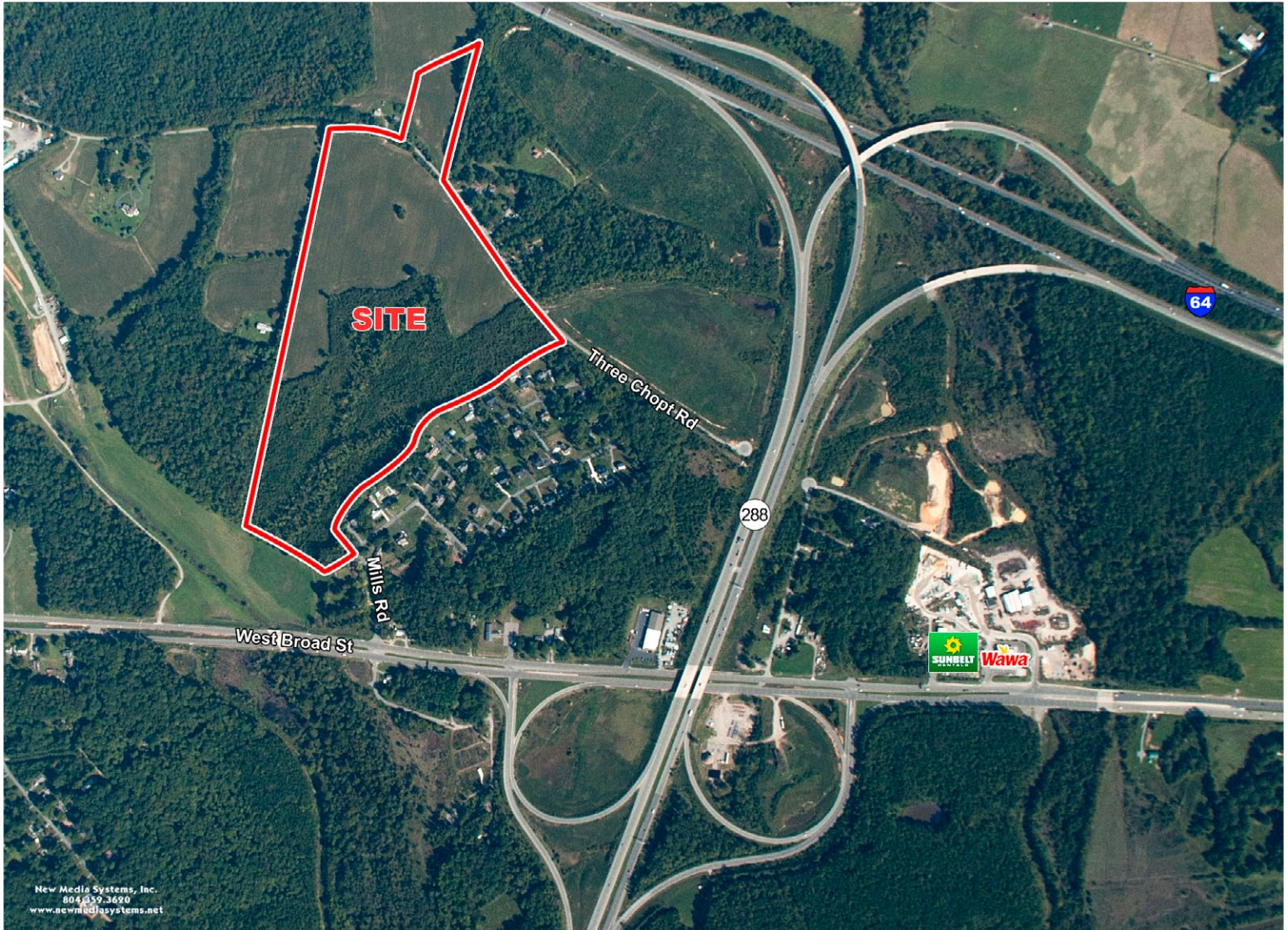
# 60+ Acres Near I-64 & Rt-288

Goochland, Virginia



LAND

FOR SALE



## DEVELOPMENT HIGHLIGHTS

- 60+ acres of land
- Access to Broad Street and Old Three Chopt Road
- Utilities on site
- Comprehensive Plan Mixed Use



General Land Commercial  
Real Estate Co.  
(804) 359-3575

MIKE CARROLL  
mcarroll@glcva.com

2800 Patterson Ave ~ Richmond, VA 23221

# 60+ Acres Near I-64 & Rt-288

## Goochland, Virginia



LAND

FOR SALE

**NOTES**

1.) OWNERSHIP AND REFERENCES:

**PARCEL 'A'**  
THE ESTATE OF ADELE B. MILLS  
W.B. 37 PG. 487  
D.B. 79 PG. 347  
GPN 7726-58-8906

**PARCEL 'B'**  
THOMAS ARNOLD MILLS, JR.  
INSTRUMENT #060003174  
GPN 7726-57-0677

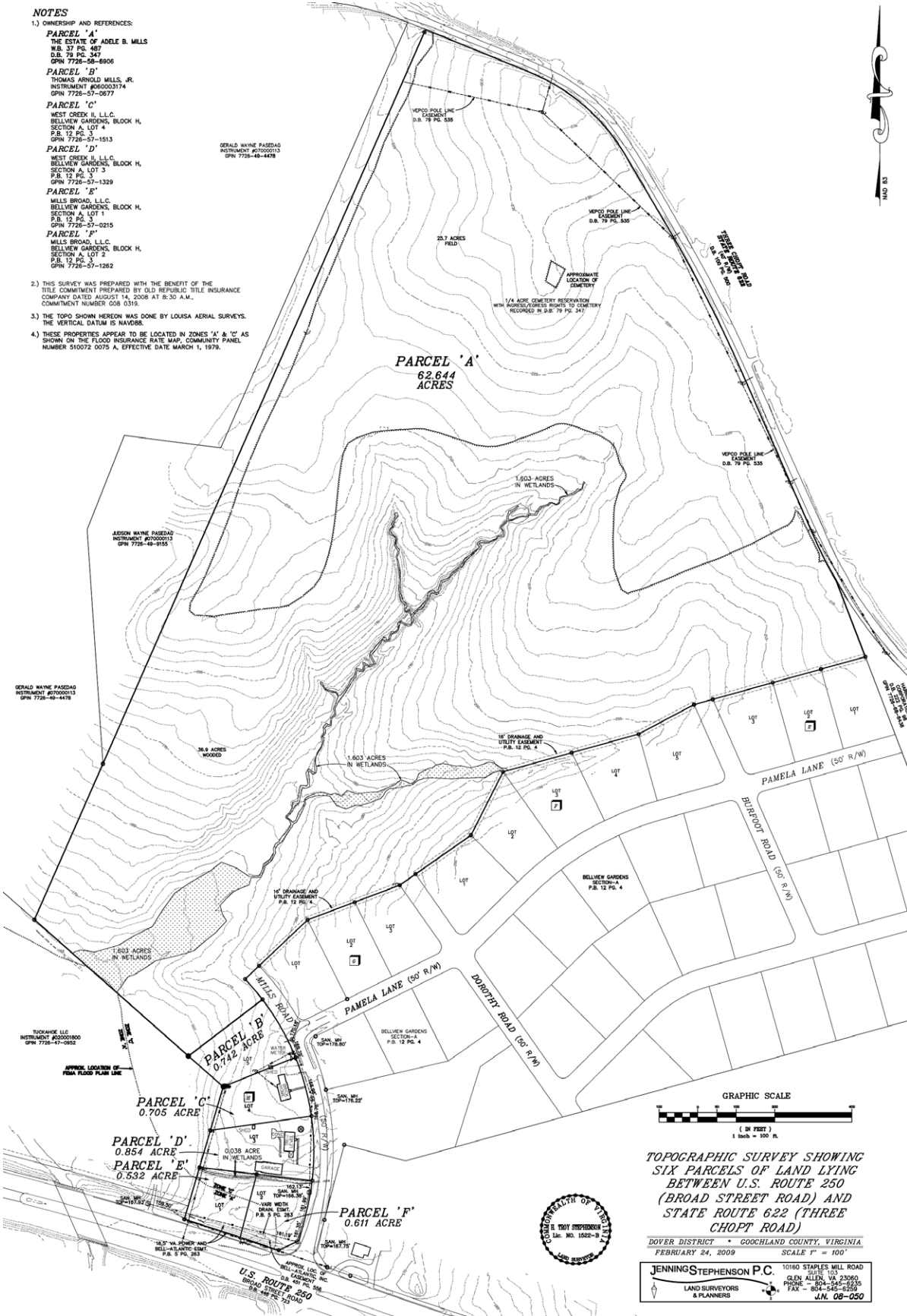
**PARCEL 'C'**  
WEST CREEK II, L.L.C.  
BELLVIEW GARDENS, BLOCK H,  
SECTION A, LOT 4  
P.B. 12 PG. 3  
GPN 7726-57-1513

**PARCEL 'D'**  
WEST CREEK II, L.L.C.  
BELLVIEW GARDENS, BLOCK H,  
SECTION A, LOT 3  
P.B. 12 PG. 3  
GPN 7726-57-1329

**PARCEL 'E'**  
MILLS BROAD, L.L.C.  
BELLVIEW GARDENS, BLOCK H,  
SECTION A, LOT 1  
P.B. 12 PG. 3  
GPN 7726-57-0215

**PARCEL 'F'**  
MILLS BROAD, L.L.C.  
BELLVIEW GARDENS, BLOCK H,  
SECTION A, LOT 2  
P.B. 12 PG. 3  
GPN 7726-57-1262

- 2.) THIS SURVEY WAS PREPARED WITH THE BENEFIT OF THE TITLE COMMITMENT PREPARED BY OLD REPUBLIC TITLE INSURANCE COMPANY DATED AUGUST 14, 2008 AT 8:30 A.M., COMMITMENT NUMBER 008 0319.
- 3.) THE TOPO SHOWN HEREON WAS DONE BY LOUISA AERIAL SURVEYS. THE VERTICAL DATUM IS NAVD83.
- 4.) THESE PROPERTIES APPEAR TO BE LOCATED IN ZONES 'A' & 'C' AS SHOWN ON THE FLOOD INSURANCE RATE MAP, COMMUNITY PANEL NUMBER 310072 0075 A, EFFECTIVE DATE MARCH 1, 1978.



TOPOGRAPHIC SURVEY SHOWING SIX PARCELS OF LAND LYING BETWEEN U.S. ROUTE 250 (BROAD STREET ROAD) AND STATE ROUTE 622 (THREE CHOPT ROAD)

DOVER DISTRICT • GOOCHLAND COUNTY, VIRGINIA  
FEBRUARY 24, 2009 SCALE 1" = 100'

JENNINGS STEPHENSON P.C.  
LAND SURVEYORS & PLANNERS  
10180 STAPLES MILL ROAD  
SUITE 103  
GLEN ALLEN, VA 23060  
PHONE - 804-545-2376  
FAX - 804-545-2359  
J.N. 08-050

Information contained herein was provided by sources believed to be reliable, General Land Commercial Real Estate Co. makes no representation, expressed or implied, as to its accuracy and said information is subject to errors, omissions or changes.

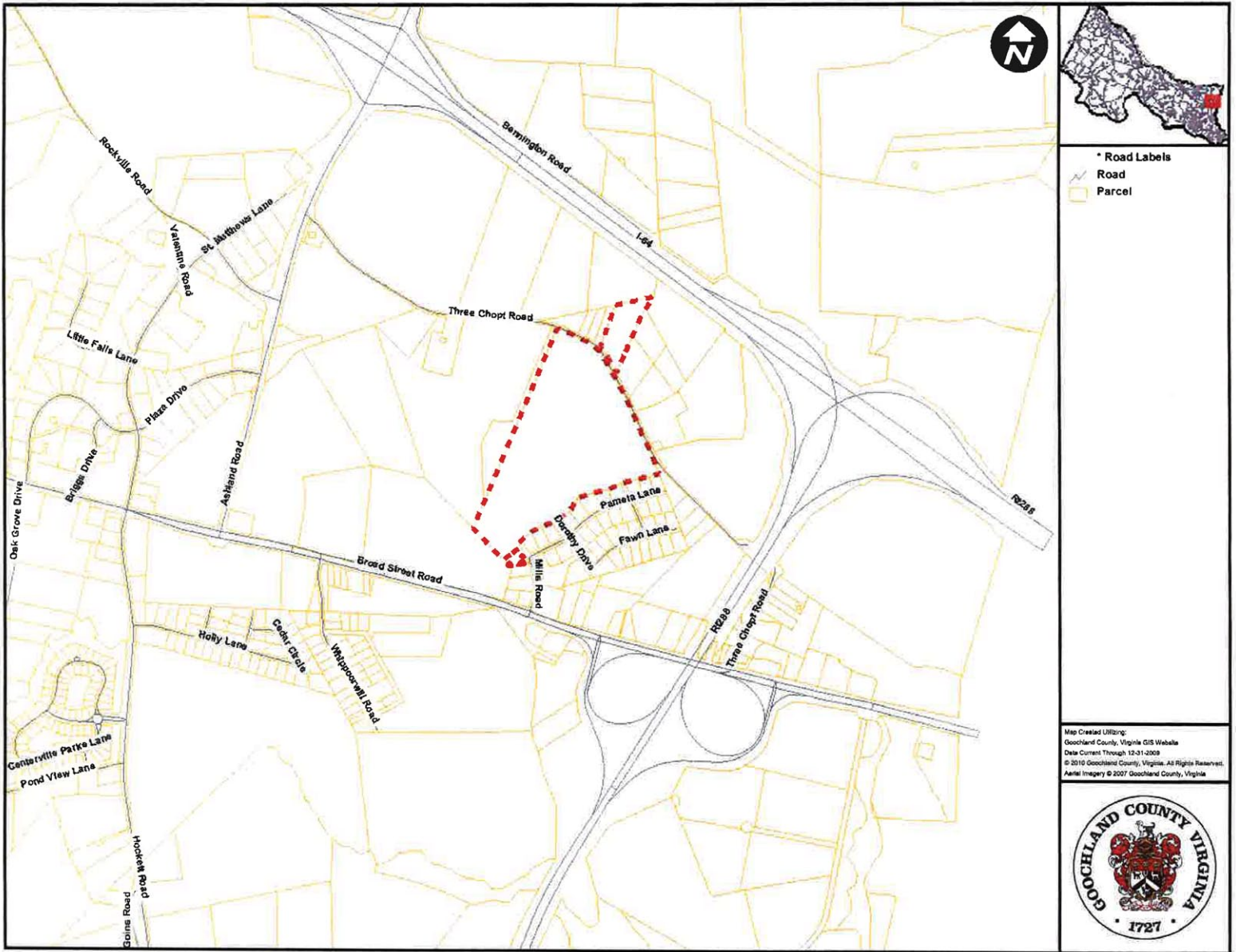
# 60+ Acres Near I-64 & Rt-288

Goochland, Virginia



LAND

FOR SALE



Information contained herein was provided by sources believed to be reliable, General Land Commercial Real Estate Co. makes no representation, expressed or implied, as to its accuracy and said information is subject to errors, omissions or changes.

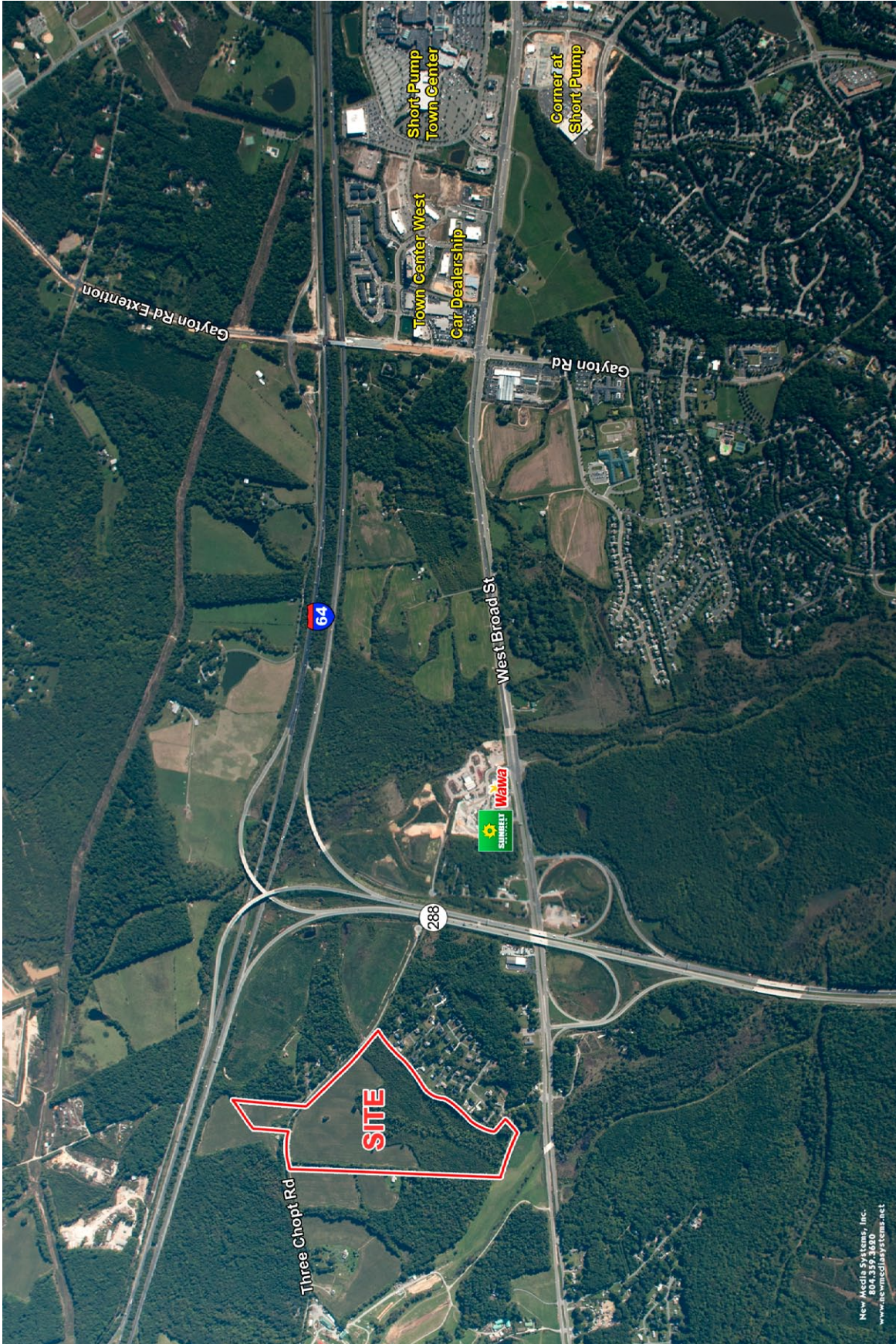
# 60+ Acres Near I-64 & Rt-288

Goochland, Virginia



LAND

FOR SALE



Information contained herein was provided by sources believed to be reliable, General Land Commercial Real Estate Co. makes no representation, expressed or implied, as to its accuracy and said information is subject to errors, omissions or changes.

New Media Systems, Inc.  
804.359.3620  
www.acwmsolairsystems.net