



RETAIL FOR LEASE ▾

## 523 Fenton Place

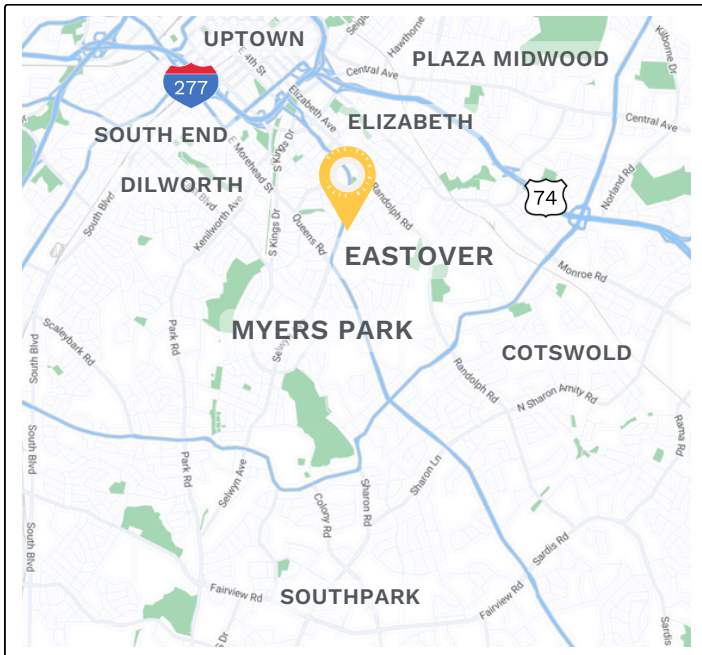
Charlotte, NC 28203

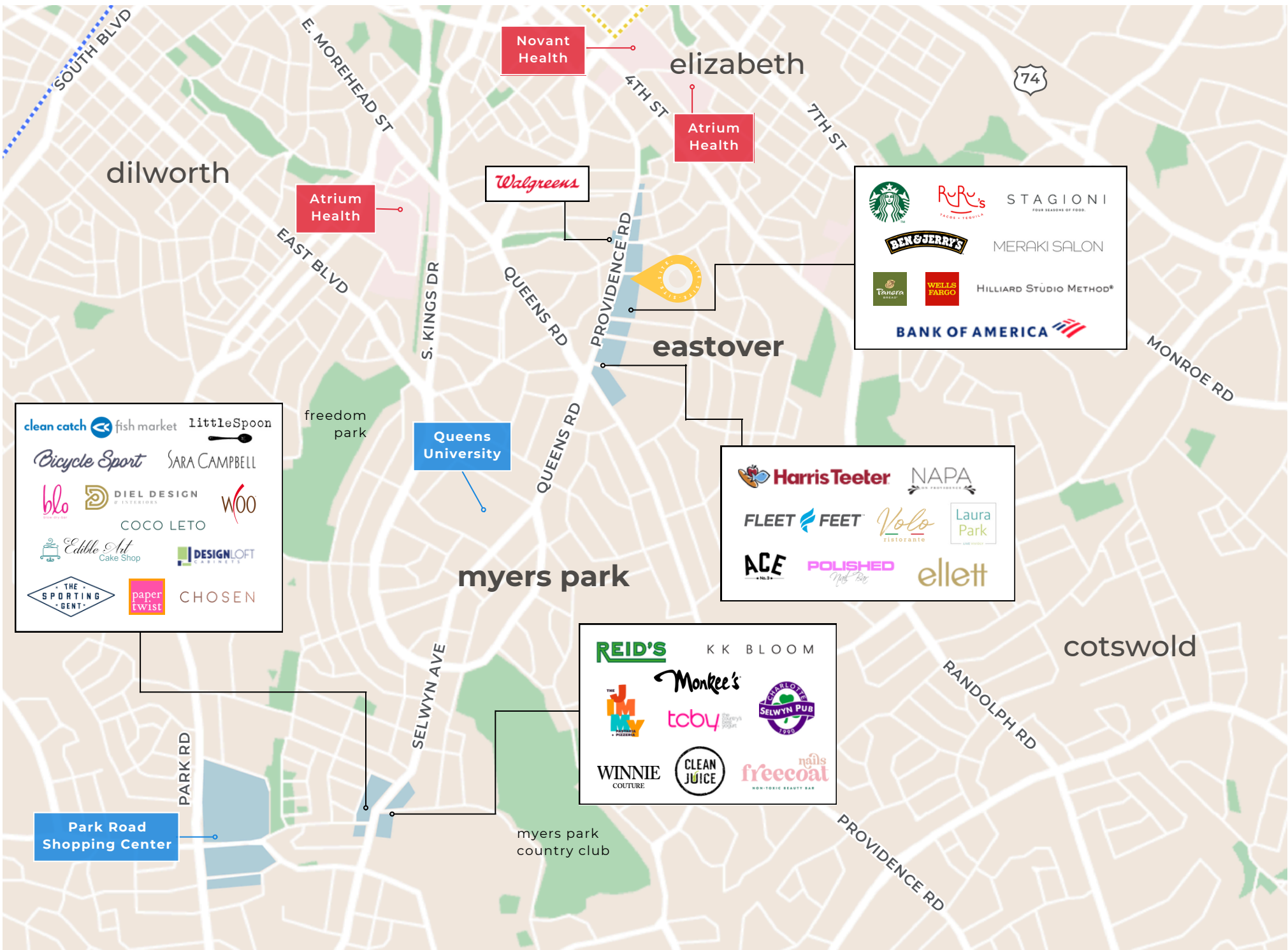


# Myers Park/Eastover

Myers Park and neighboring Eastover are two of Charlotte's most affluent and sought after residential neighborhoods. With 100-year-old oak trees lining the streets and rows of stunning homes, they are easily two of the most beautiful neighborhoods in the Queen City.

Conveniently located near center city Charlotte, it is remarkably walkable and features a cluster of specialty shops, galleries, and neighborhood eateries. Anchored by the stately Queen's University, this area also boasts the elegant Duke Mansion, The Mint Museum and Freedom Park among its attractions.





PROPERTY DETAILS ▾



**523 Fenton Place**  
Charlotte, NC 28207



**3,085 SF**  
Available retail



**2nd Generation Retail**  
Former OM Spa



**2 Levels**  
Interior staircase



**Parking**  
Convenient surface parking

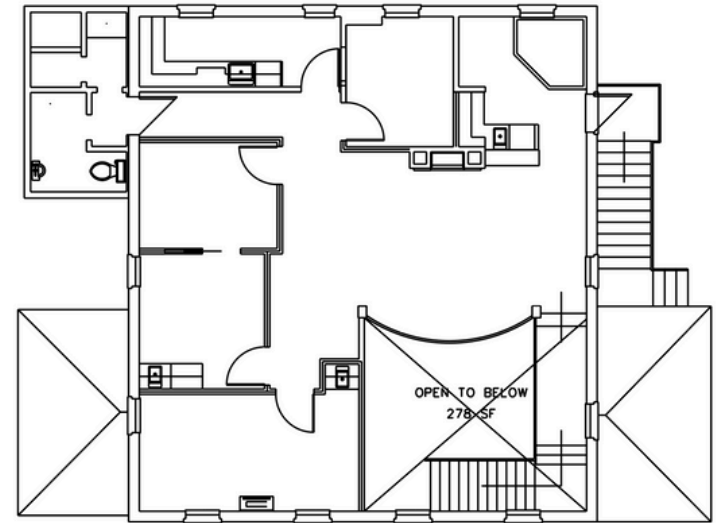


**Charming Neighborhood**  
Myers Park/Eastover

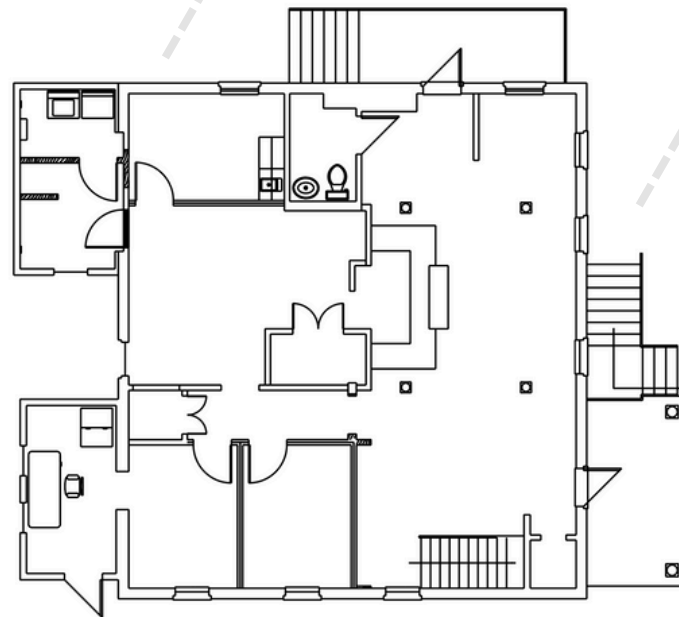


523 FENTON PLACE | CHARLOTTE, NC

SECOND LEVEL



MAIN LEVEL



Fenton Place



## 523 Fenton Place

Charlotte, NC 28207

GET IN TOUCH 



**Jay Mitchener**

[jay@thriftcres.com](mailto:jay@thriftcres.com)

(704) 576-2772