

LAKE HOPATCONG, NJ

694 & 706 NEW JERSEY 15, LAKE HOPATCONG, NJ 07849



OFFERING SUMMARY

Available SF: 750 - 2,500 SF

Lease Rate: Call For Details

NEIGHBORING TENANTS



PROPERTY OVERVIEW

Retail and Office Spaces For Lease

PROPERTY HIGHLIGHTS

- 4 Retail Units Available Immediately:
- -2,500 SF (End Cap w/ Drive Thru)
- -1,500 SF (Dry Cleaner)
- -924 SF (Hair Salon)
- -750 SF (Former Hippie Club)
- Abundant Parking
- Excellent Exposure on Route 15
- Convenient Access to Route 80
- Anchored by Fulton Bank

FOR MORE INFORMATION CONTACT:

ROY PARET

201.703.9700 x132

rparet@thegoldsteingroup.com

Licensed Real Estate Broker | 45 EISENHOWER DRIVE | SUITE 246 | PARAMUS, NJ 07652

All information is from sources deemed reliable and is submitted subject to errors, omissions, change of price, terms, rental, prior sale and withdrawal without notice.



THEGOLDSTEINGROUP.COM

LAKE HOPATCONG, NJ

694 & 706 NEW JERSEY 15, LAKE HOPATCONG, NJ 07849



Image capture: Jul 2023 © 2025 Google

FOR MORE INFORMATION CONTACT:

ROY PARET

201.703.9700 x132

rparet@thegoldsteingroup.com

Licensed Real Estate Broker | 45 EISENHOWER DRIVE | SUITE 246 | PARAMUS, NJ 07652

All information is from sources deemed reliable and is submitted subject to errors, omissions, change of price, terms, rental, prior sale and withdrawal without notice.



THEGOLDSTEINGROUP.COM

LAKE HOPATCONG, NJ

694 & 706 NEW JERSEY 15, LAKE HOPATCONG, NJ 07849



FOR MORE INFORMATION CONTACT:

ROY PARET

201.703.9700 x132

rparet@thegoldsteingroup.com

Licensed Real Estate Broker | 45 EISENHOWER DRIVE | SUITE 246 | PARAMUS, NJ 07652

All information is from sources deemed reliable and is submitted subject to errors, omissions, change of price, terms, rental, prior sale and withdrawal without notice.



THEGOLDSTEINGROUP.COM

LAKE HOPATCONG, NJ

694 & 706 NEW JERSEY 15, LAKE HOPATCONG, NJ 07849

924 SF



FOR MORE INFORMATION CONTACT:

ROY PARET

201.703.9700 x132

rparet@thegoldsteingroup.com

Licensed Real Estate Broker | 45 EISENHOWER DRIVE | SUITE 246 | PARAMUS, NJ 07652

All information is from sources deemed reliable and is submitted subject to errors, omissions, change of price, terms, rental, prior sale and withdrawal without notice.



THEGOLDSTEINGROUP.COM

LAKE HOPATCONG, NJ

694 & 706 NEW JERSEY 15, LAKE HOPATCONG, NJ 07849

1,500 SF



Image capture: Jul 2023 © 2025 Google

FOR MORE INFORMATION CONTACT:

ROY PARET

201.703.9700 x132

rparet@thegoldsteingroup.com

Licensed Real Estate Broker | 45 EISENHOWER DRIVE | SUITE 246 | PARAMUS, NJ 07652

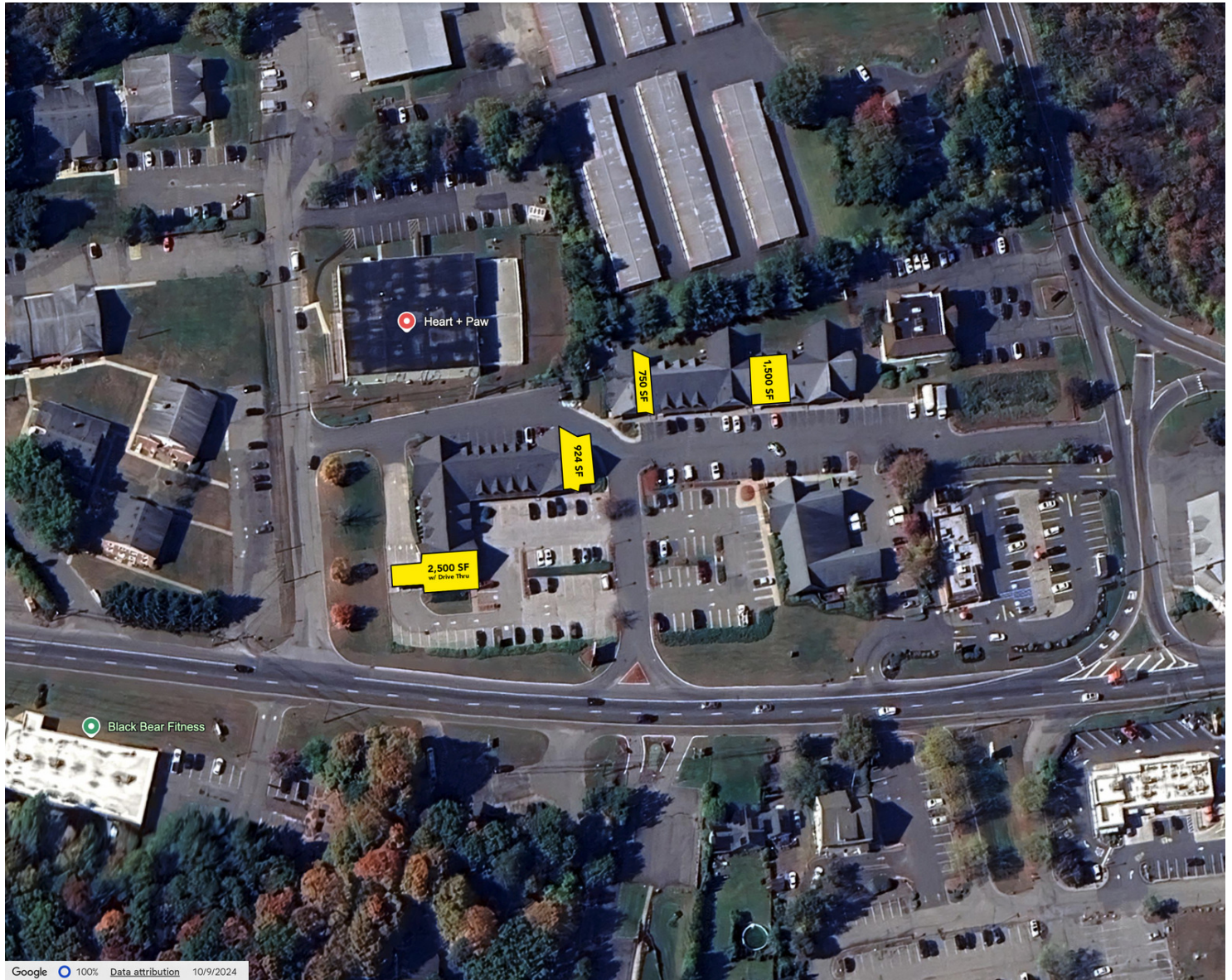
All information is from sources deemed reliable and is submitted subject to errors, omissions, change of price, terms, rental, prior sale and withdrawal without notice.



THEGOLDSTEINGROUP.COM

LAKE HOPATCONG, NJ

694 & 706 NEW JERSEY 15, LAKE HOPATCONG, NJ 07849



FOR MORE INFORMATION CONTACT:

ROY PARET

201.703.9700 x132

rparet@thegoldsteingroup.com

Licensed Real Estate Broker | 45 EISENHOWER DRIVE | SUITE 246 | PARAMUS, NJ 07652

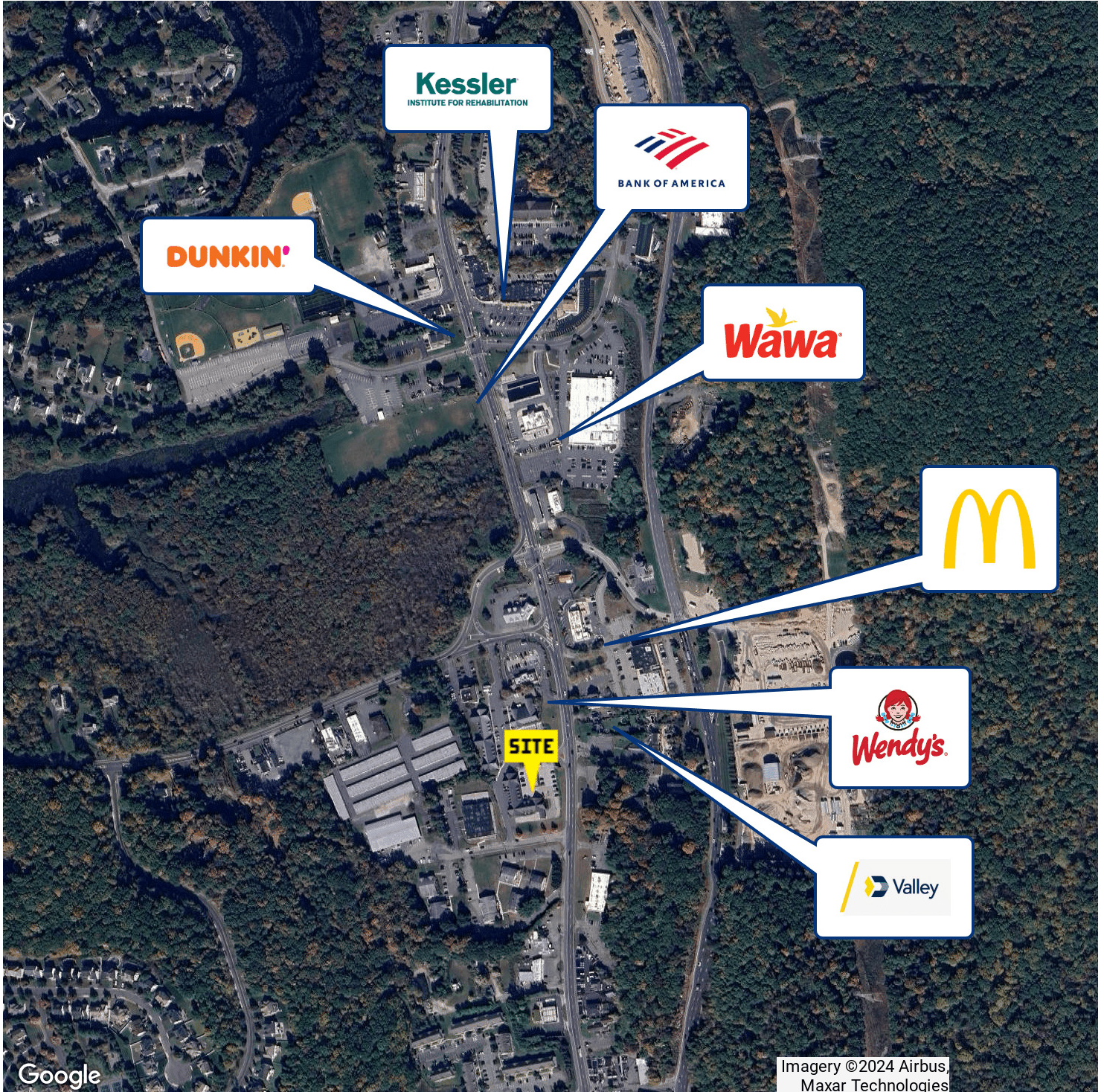
All information is from sources deemed reliable and is submitted subject to errors, omissions, change of price, terms, rental, prior sale and withdrawal without notice.



THEGOLDSTEINGROUP.COM

LAKE HOPATCONG, NJ

694 & 706 NEW JERSEY 15, LAKE HOPATCONG, NJ 07849



FOR MORE INFORMATION CONTACT:

ROY PARET

201.703.9700 x132

rparet@thegoldsteingroup.com

Licensed Real Estate Broker | 45 EISENHOWER DRIVE | SUITE 246 | PARAMUS, NJ 07652

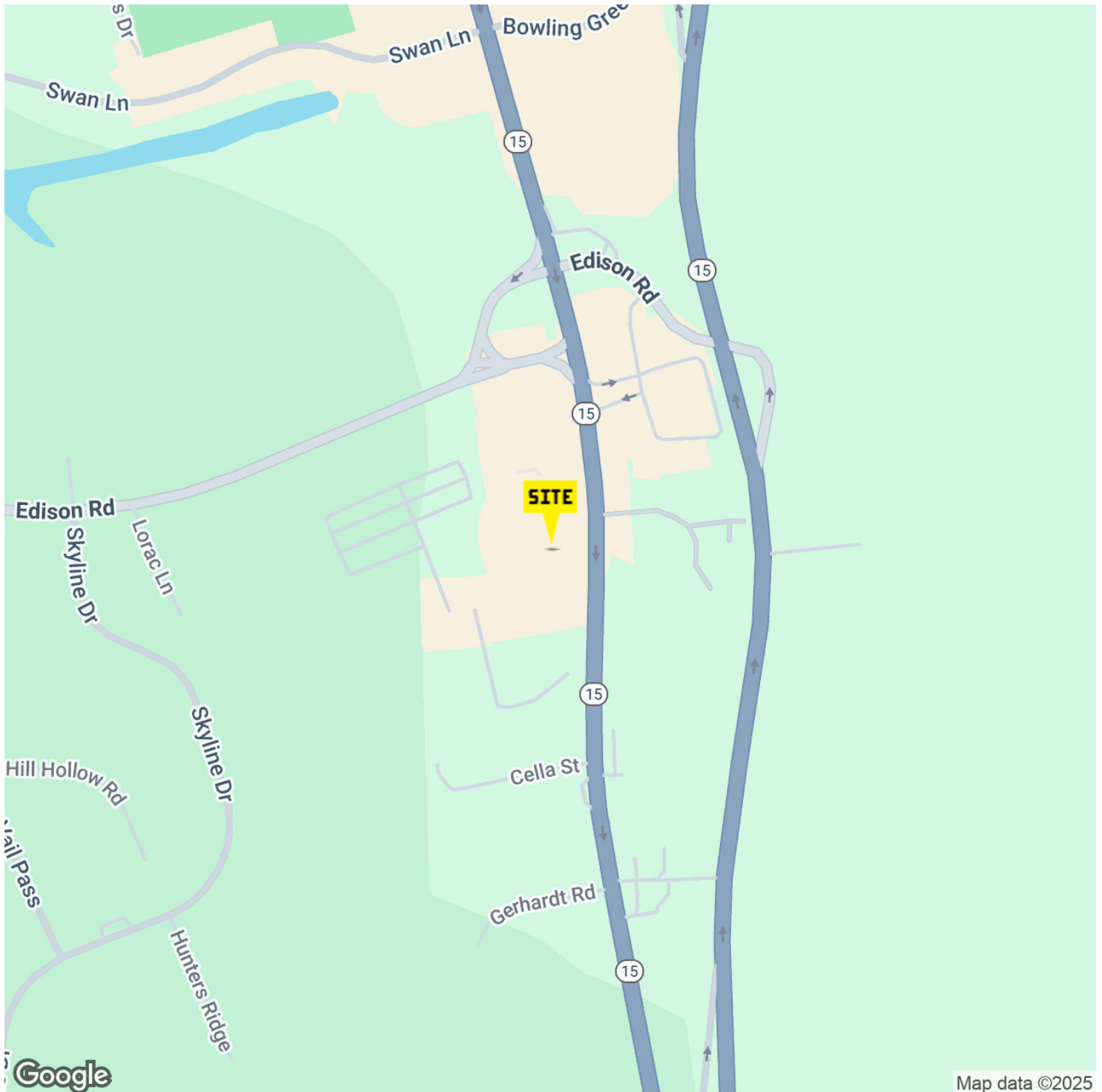
All information is from sources deemed reliable and is submitted subject to errors, omissions, change of price, terms, rental, prior sale and withdrawal without notice.



THEGOLDSTEINGROUP.COM

LAKE HOPATCONG, NJ

694 & 706 NEW JERSEY 15, LAKE HOPATCONG, NJ 07849



FOR MORE INFORMATION CONTACT:

ROY PARET

201.703.9700 x132

rparet@thegoldsteingroup.com

Licensed Real Estate Broker | 45 EISENHOWER DRIVE | SUITE 246 | PARAMUS, NJ 07652

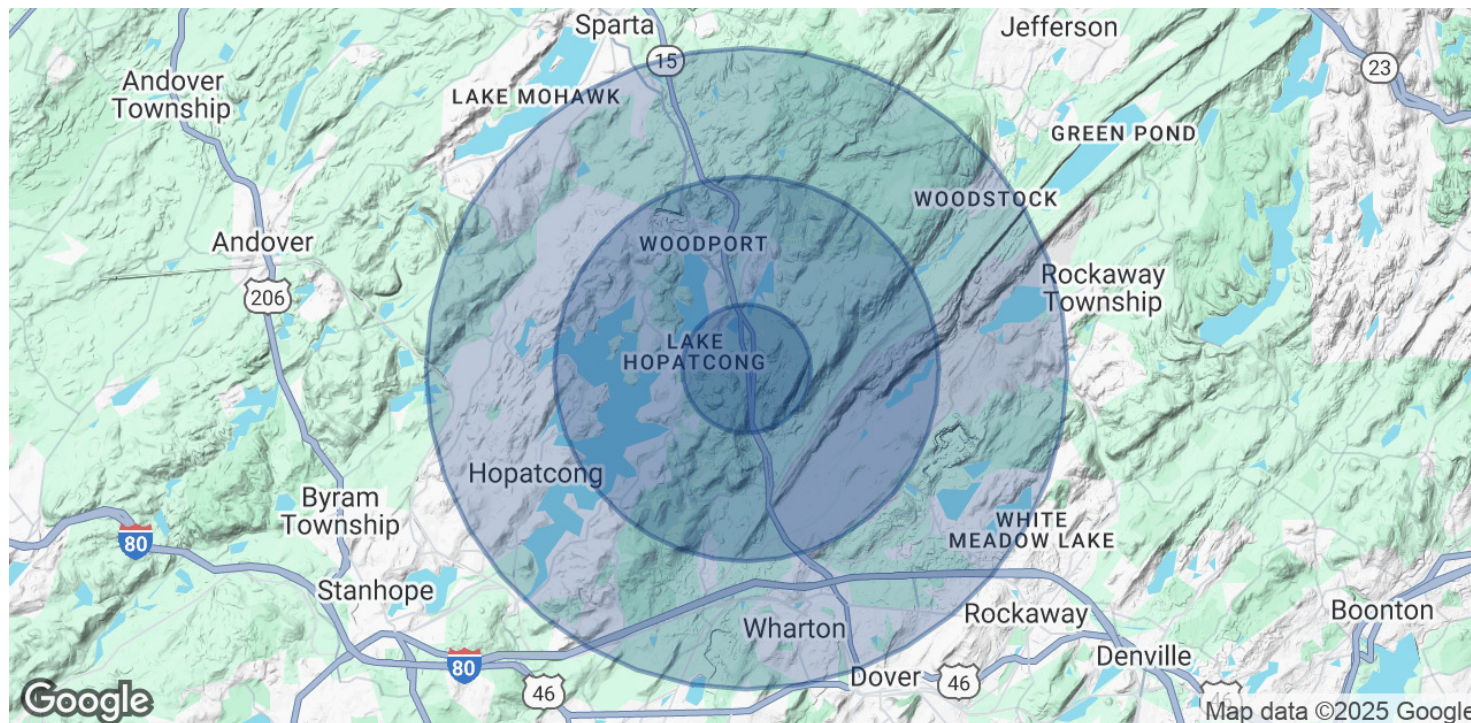
All information is from sources deemed reliable and is submitted subject to errors, omissions, change of price, terms, rental, prior sale and withdrawal without notice.



THEGOLDSTEINGROUP.COM

LAKE HOPATCONG, NJ

694 & 706 NEW JERSEY 15, LAKE HOPATCONG, NJ 07849



POPULATION	1 MILE	3 MILES	5 MILES
Total Population	2,642	15,128	62,970
Average Age	43	44	44
Average Age (Male)	42	43	43
Average Age (Female)	43	44	45

HOUSEHOLDS & INCOME	1 MILE	3 MILES	5 MILES
Total Households	945	6,011	24,719
# of Persons per HH	2.8	2.5	2.5
Average HH Income	\$162,764	\$144,550	\$149,438
Average House Value	\$661,026	\$560,223	\$467,764

Demographics data derived from AlphaMap

FOR MORE INFORMATION CONTACT:

ROY PARET

201.703.9700 x132

rparet@thegoldsteingroup.com

Licensed Real Estate Broker | 45 EISENHOWER DRIVE | SUITE 246 | PARAMUS, NJ 07652

All information is from sources deemed reliable and is submitted subject to errors, omissions, change of price, terms, rental, prior sale and withdrawal without notice.



THEGOLDSTEINGROUP.COM