

4181

POWER INN RD.

SACRAMENTO, CA

4181



Suite C
For Sublease
5,160 SF



**CUSHMAN &
WAKEFIELD**



// BUILDING SPECS

BUILDING SIZE

20,000 SF

AVAILABLE SPACE

5,160 SF + Small Yard

CLEAR HEIGHT

17'

LOADING DOORS

3 Grade Level

PARKING

28 SPACES TOTAL

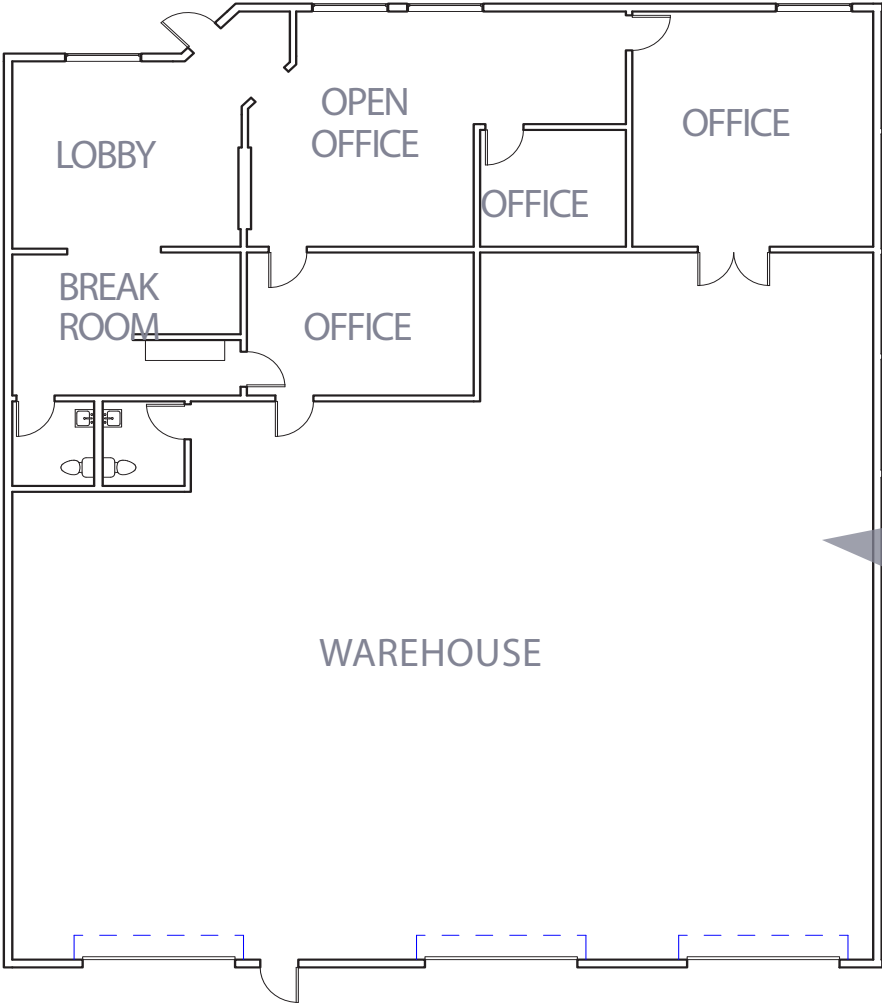
YEAR BUILT

1979

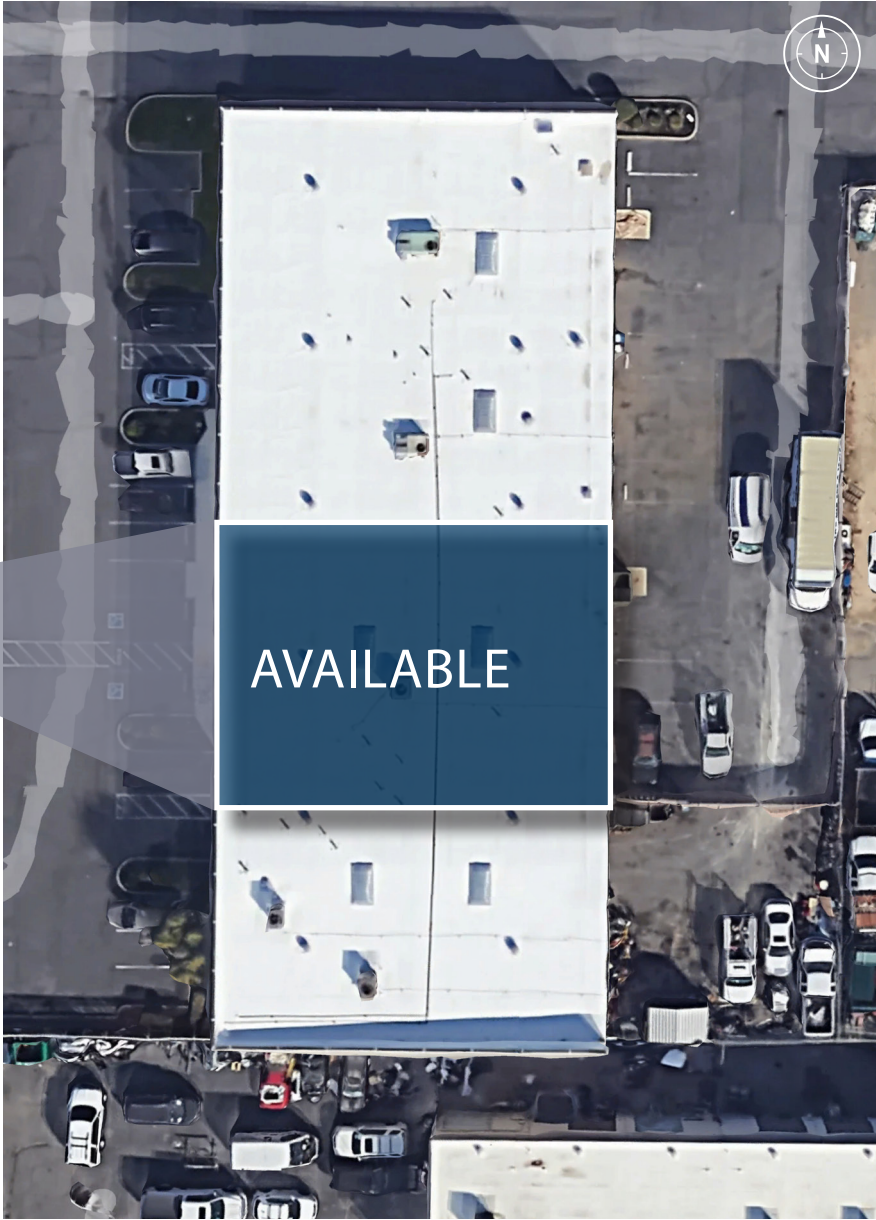
ZONING

M-2 S (CITY OF SACRAMENTO)

// FLOOR PLAN



SUITE	CURRENT LED	OFFICE SF	WAREHOUSE SF	LOADING DOORS
C	10/31/2025	2,160 SF	3,000 SF	3 GL



// 4181 POWER INN RD. STE C
Sacramento, CA 95826

4181
POWER INN RD.

SACRAMENTO, CA



CUSHMAN &
WAKEFIELD

CONTACT

LENNY GOLD
Senior Associate
+1 916 288 4443
lenny.gold@cushwake.com
CA LIC #02055534

©2023 Cushman & Wakefield. All rights reserved. The material in this presentation has been prepared solely for information purposes, and is strictly confidential. Any disclosure, use, copying or circulation of this presentation (or the information contained within it) is strictly prohibited, unless you have obtained Cushman & Wakefield's prior written consent. The views expressed in this presentation are the views of the author and do not necessarily reflect the views of Cushman & Wakefield. Neither this presentation nor any part of it shall form the basis of, or be relied upon in connection with any offer, or act as an inducement to enter into any contract or commitment whatsoever. NO REPRESENTATION OR WARRANTY IS GIVEN, EXPRESS OR IMPLIED, AS TO THE ACCURACY OF THE INFORMATION CONTAINED WITHIN THIS PRESENTATION, AND CUSHMAN & WAKEFIELD IS UNDER NO OBLIGATION TO SUBSEQUENTLY CORRECT IT IN THE EVENT OF ERRORS.