

## BROOKSVILLE DEVELOPMENT OPPORTUNITY

This 5 acre site was originally planned for medical office buildings, with infrastructure installed and entitlements in place. However, with the proximity to the Suncoast Expressway, this could be an ideal location for retail or stand-alone user.

An ideal development would include a mixed-use property with Office/Medical/Retail.

- Entitled for over 30,000 SF of Office Space
- Close to hospitals
- 3 miles from retail shopping and restaurants
- 5 minutes from Downtown Brooksville
- 10 minutes from Wiki Wachee State Park
- Over 320,000 people within a 30 minute drive

**For Sale: \$2,500,000**

### CPR Team

David Culligan

813.770.3537

[david@cprteam.com](mailto:david@cprteam.com)

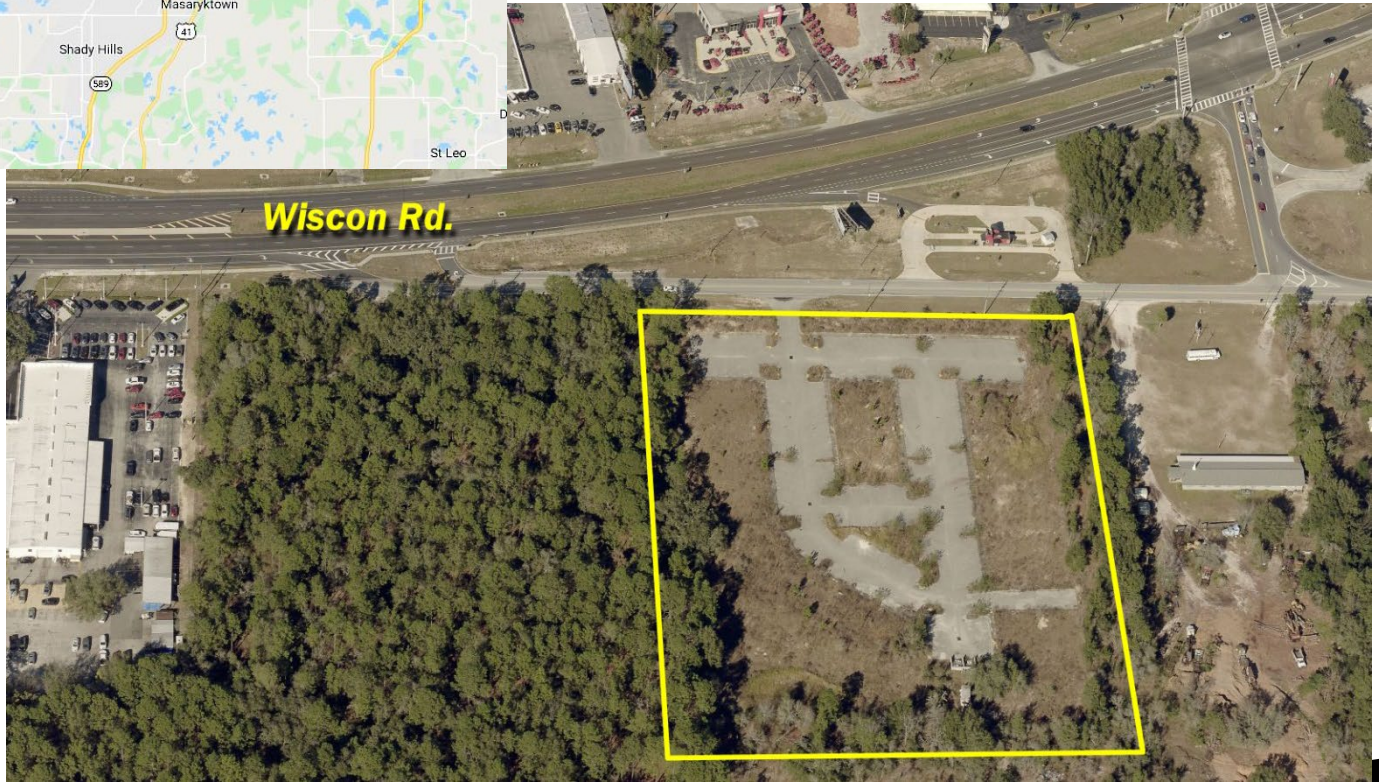
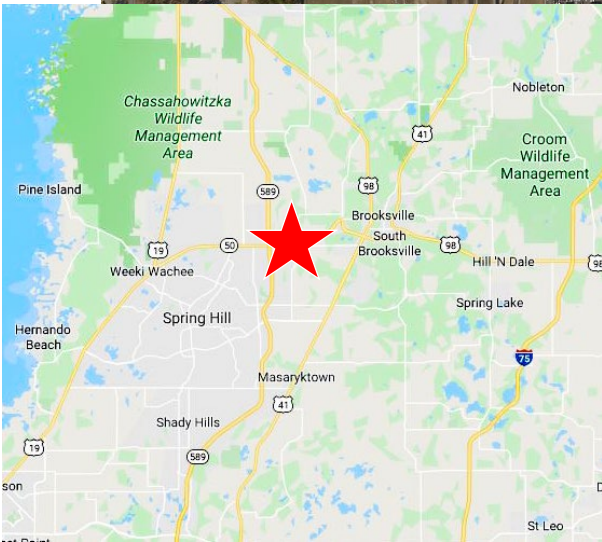
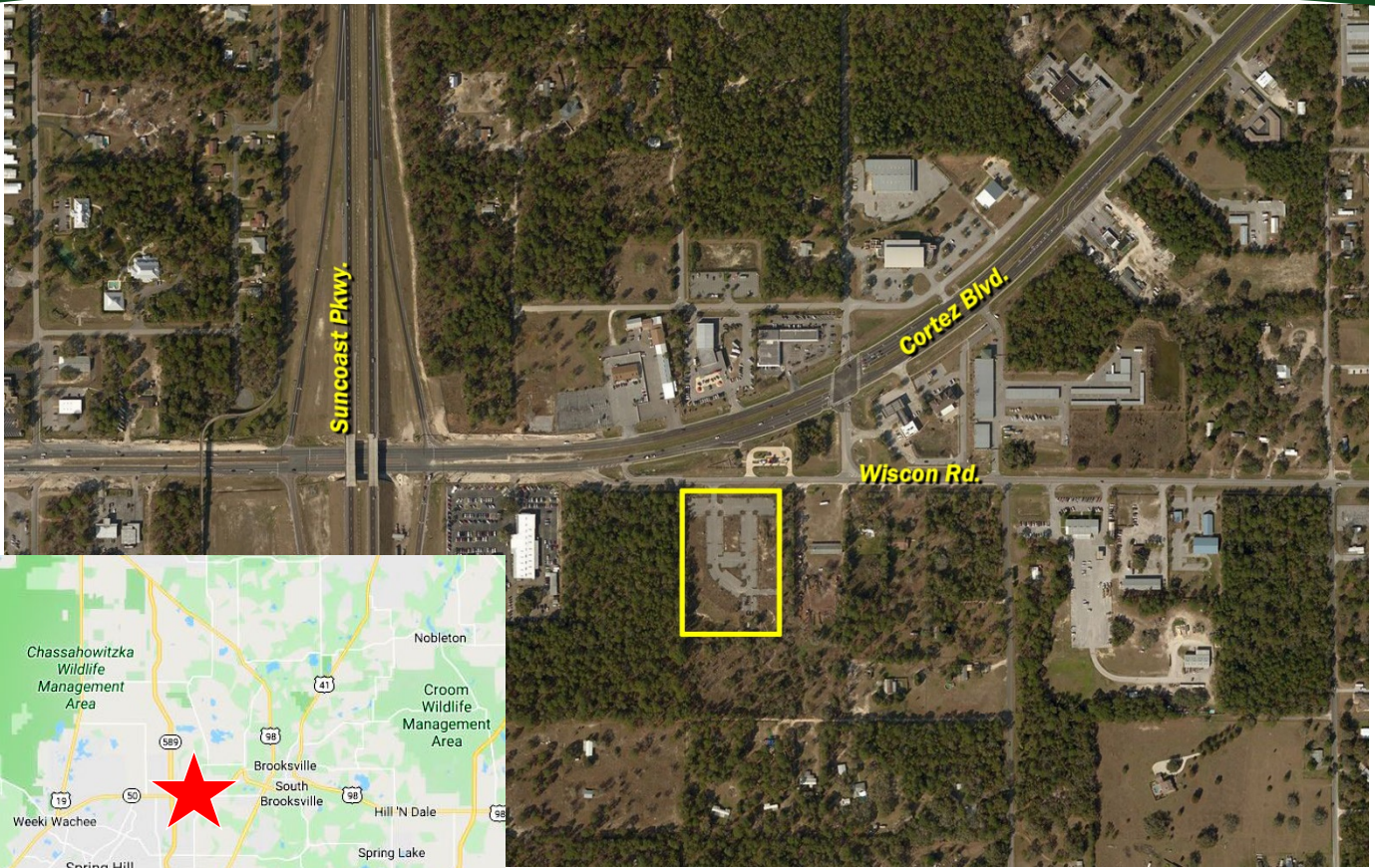
Jim Engelmann

813.508.4981

[jim@cprteam.com](mailto:jim@cprteam.com)



**15200 Wiscon Rd., Brooksville, FL 34601**



Information herein is not warranted and subject to change without notice. We assume no liabilities for errors and omissions.