

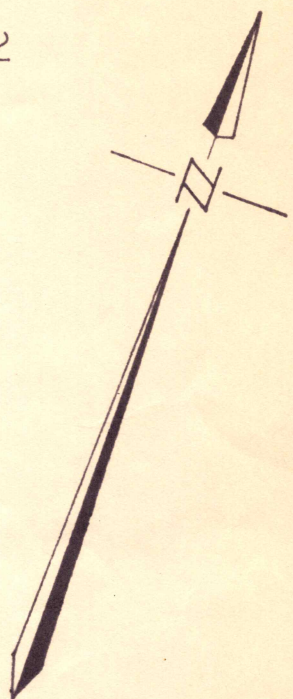
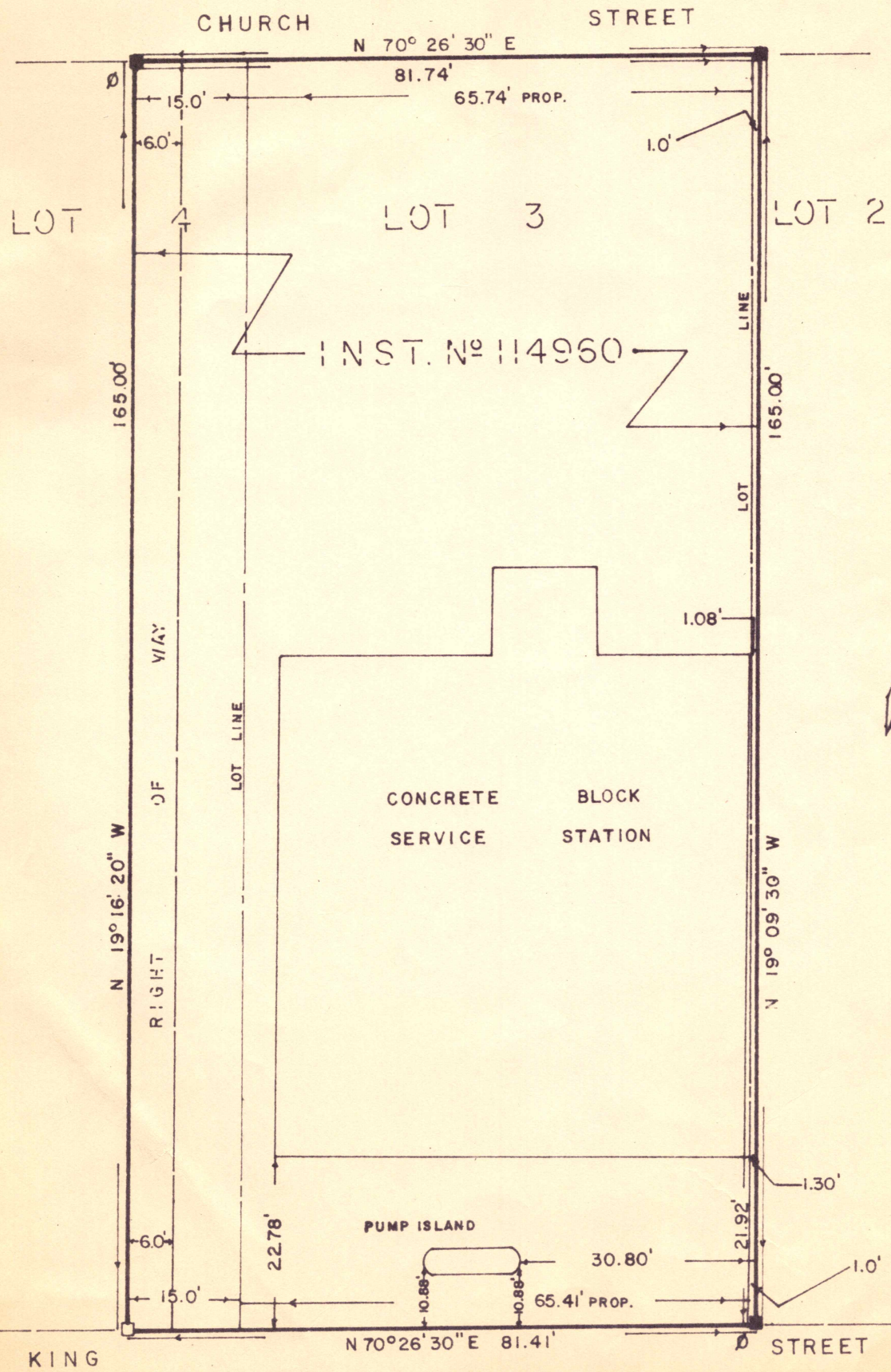
PLAN SHOWING BUILDING LOCATION ON LOT 3, AND PART OF LOT 2 AND LOT 4, NORTH OF KING STREET AND EAST OF DIVISION STREET

REGISTERED PLAN N^o 109

VILLAGE OF OMEMEE

COUNTY OF VICTORIA

SCALE: 1 INCH = 20 FEET 1978



(THE KING'S HIGHWAY N^o 7)
SMITH & SMITH OF LINDSAY LTD.
ONTARIO LAND SURVEYORS
P. O. BOX 24, LINDSAY, 705-324-2511
Dated OCTOBER 12, 1978

Per: *G. E. Smith*
G. E. SMITH
Ontario Land Surveyor