

LEXINGTON COMMONS

FOR LEASE



PROPERTY DETAILS

1584 S. 500 W., Bountiful, UT 84087

Lease Rate: \$18.00/SF Modified Gross

- 1,494–2988 SF available
- 4/1,000 SF parking ratio
- Two-story lobby entry
- Centrally located between Ogden and Salt Lake City
- CAM fee included in lease rate
- Tenant pays in-suite cleaning, gas and electricity
- Do not disturb existing tenant

2025 DEMOS



EST. POPULATION

1 MILE » **13,244**
3 MILE » **87,307**
5 MILE » **102,347**



EST. HOUSEHOLDS

1 MILE » **5,071**
3 MILE » **30,515**
5 MILE » **35,690**



EST. AVERAGE HH INCOME

1 MILE » **\$107,734**
3 MILE » **\$141,829**
5 MILE » **\$143,750**



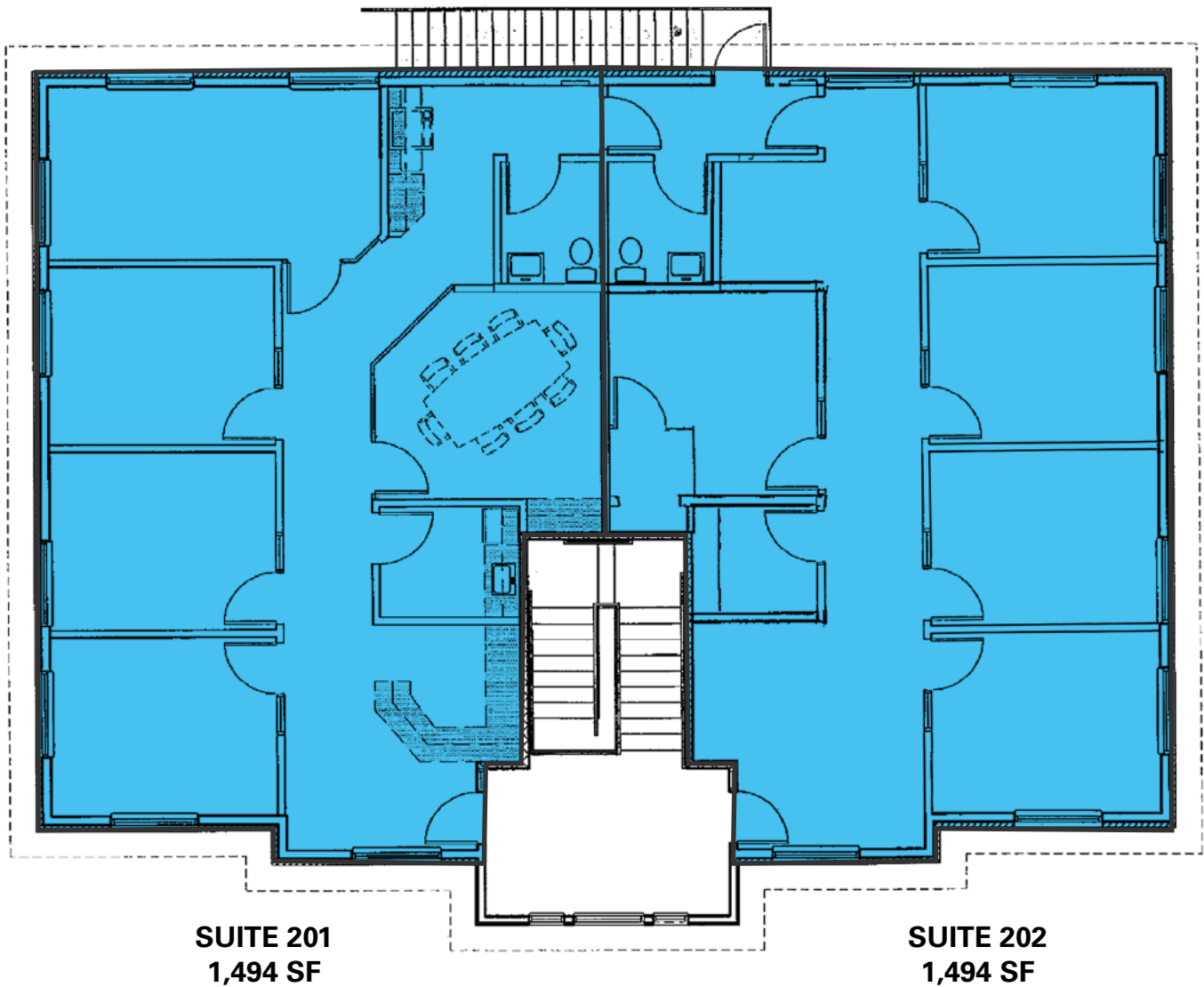
BRAXTON WILLIE, CCIM
bwillie@newmarkmw.com
direct 801.803.3334
[View Profile](#)

BRANSON WOOD
bwood@newmarkmw.com
direct 801.510.5207
[View Profile](#)

**FULL SERVICE
COMMERCIAL REAL ESTATE**
1410 S University Park Blvd, Ste 120
Clearfield, Utah 84015
Office 801.578.5580
www.newmarkmw.com

LEXINGTON COMMONS

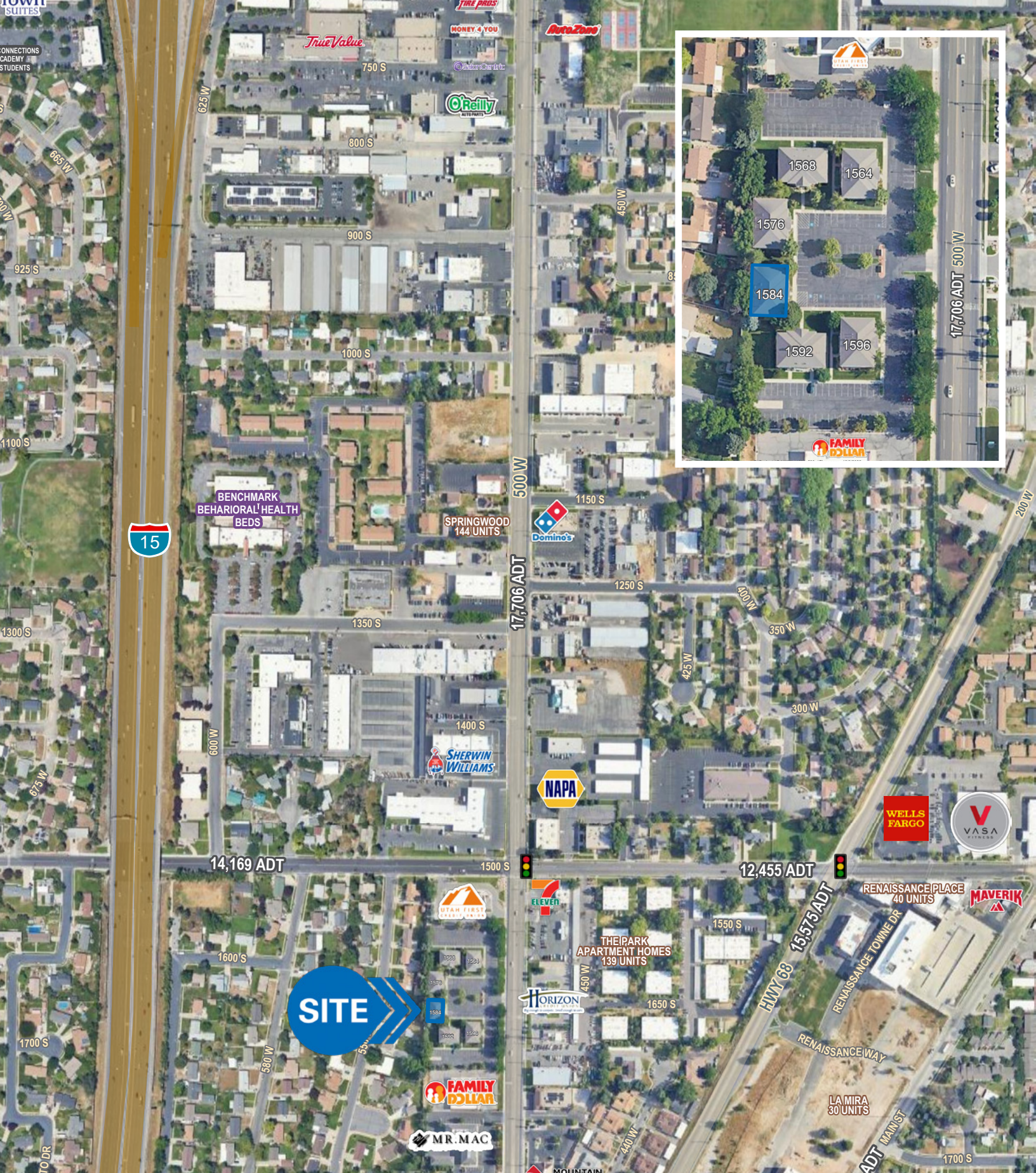
SECOND FLOOR
2,988 SF AVAILABLE



BRAXTON WILLIE, CCIM
bwillie@newmarkmw.com
direct 801.803.3334
[View Profile](#)

BRANSON WOOD
bwood@newmarkmw.com
direct 801.510.5207
[View Profile](#)

**FULL SERVICE
COMMERCIAL REAL ESTATE**
1410 S University Park Blvd, Ste 120
Clearfield, Utah 84015
Office 801.578.5580
www.newmarkmw.com



NEWMARK
MOUNTAIN WEST

BRAXTON WILLIE, CCIM
bwillie@newmarkmw.com
direct 801.803.3334
[View Profile](#)

BRANSON WOOD
bwood@newmarkmw.com
direct 801.510.5207
[View Profile](#)

**FULL SERVICE
COMMERCIAL REAL ESTATE**
1410 S University Park Blvd, Ste 120
Clearfield, Utah 84015
Office 801.578.5580
www.newmarkmw.com