



FOR SUBLEASE



2353 NW 21ST AVENUE

Available Industrial Space

± 5,000 SF - ± 10,000 SF with Paved, Secured Yard

2353 NW 21st Ave, Portland, OR 97209

- Two (2) Grade Doors and One (1) Dock Door

DANIEL HELM, SIOR

Senior Vice President | Licensed in OR & WA

503-542-2899 | dhelm@capacitycommercial.com

MARK CHILDS, SIOR

Principal Broker | Licensed in OR & WA

503-542-4350 | markc@capacitycommercial.com

DANIEL SAYLES

Senior Vice President | Licensed in OR & WA

503-542-4351 | dsayles@capacitycommercial.com



PROPERTY SUMMARY



PROPERTY DETAILS	
Address	2353 NW 21st Ave, Portland, OR 97209
Available Space	± 5,000 SF - ± 10,000 SF
Office Size	± 5,000 SF
Secured Yard	± 10,000 SF
Mezzanine Size	± 2,216 SF
Dock Doors	One (1) Dock Door
Grade Doors	Two (2) Grade Doors
Power	240V, 3 Phase
Sprinklers	No
Sublease Rate	Call for Pricing

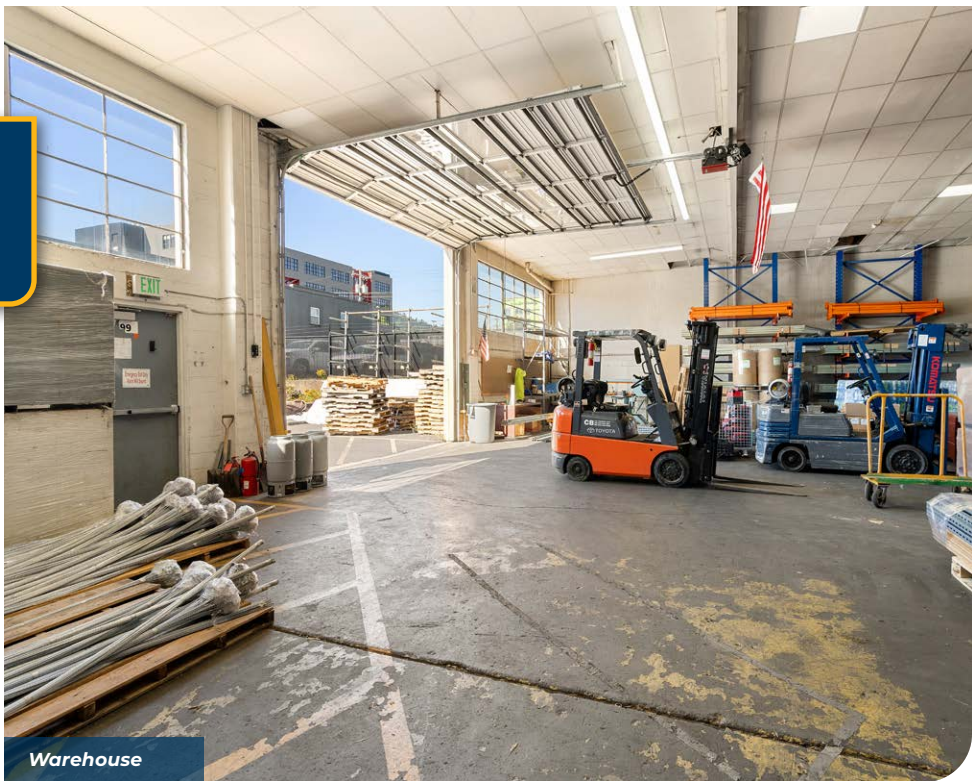
Location Features

- Immediate access to Hwy-30 and less than 1 mile to I-405
- ±2 miles from Downtown Portland
- ±20 minutes to Portland International Airport (PDX)
- Quick connectivity to I-5 via Fremont Bridge

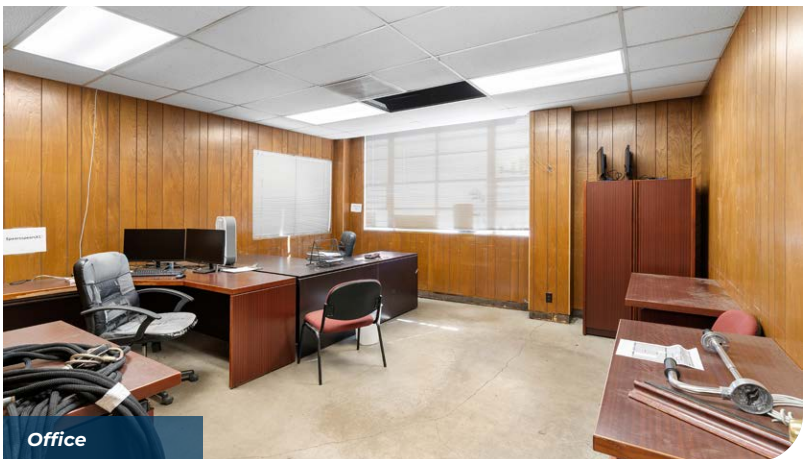




PHOTO LIBRARY



Warehouse



Office



Warehouse



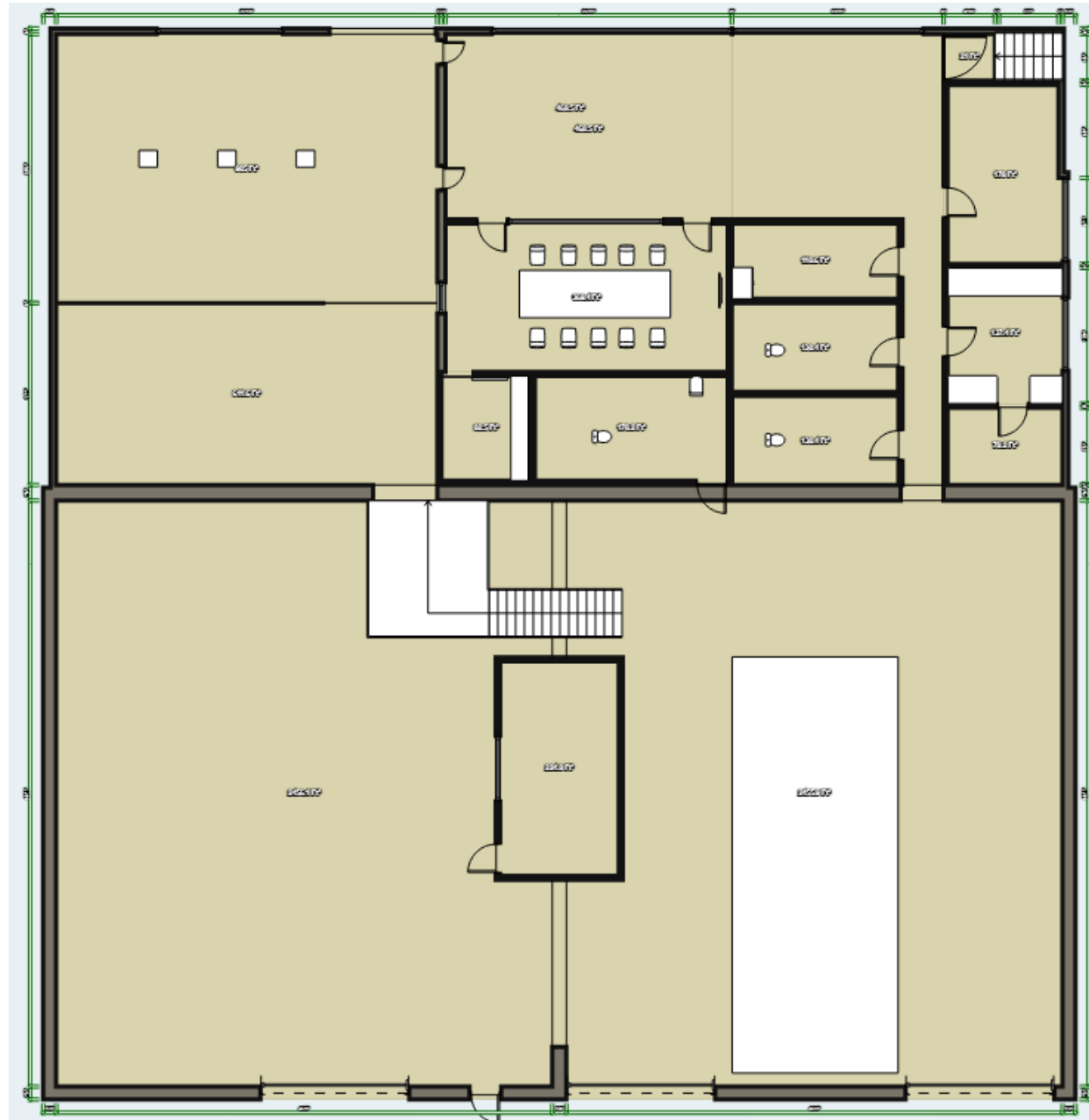
Warehouse



Mezzanine

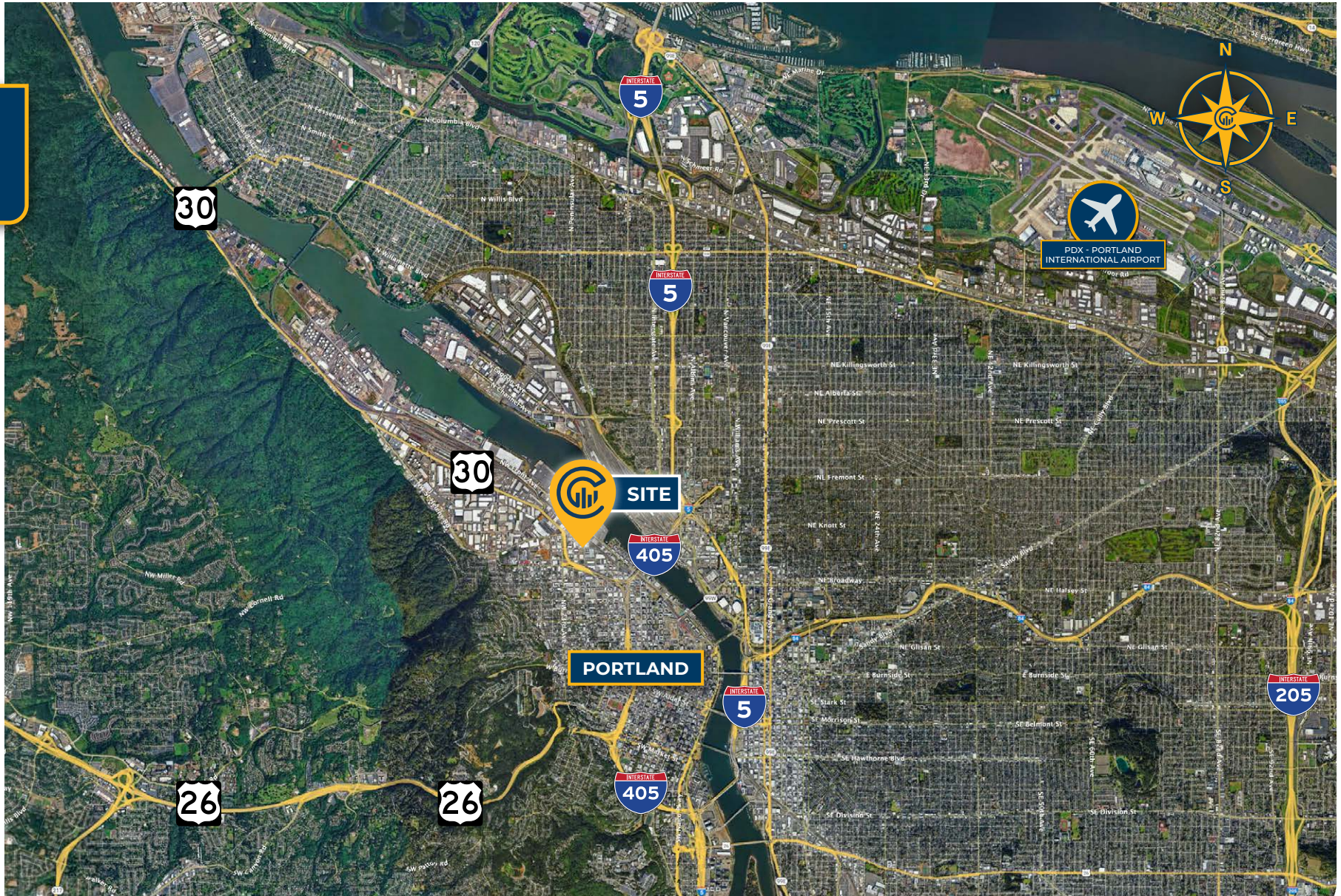


FLOOR PLAN





LOCAL AERIAL MAP



*Average Daily Traffic Volume | Traffic Counts are Provided by REGIS Online at SitesUSA.com ©2025 | Map data ©2025 Google Imagery ©2025, Airbus, CNES / Airbus, Maxar Technologies, Metro, Portland Oregon, Public Laboratory, State of Oregon, U.S. Geological Survey, USDA/FPAC/GEO

DANIEL HELM, SIOR

Senior Vice President | Licensed in OR & WA

503-542-2899

dhelm@capacitycommercial.com

MARK CHILDS, SIOR

Principal | Licensed in OR & WA

503-542-4350

markc@capacitycommercial.com

DANIEL SAYLES

Senior Vice President | Licensed in OR & WA

503-542-4351

dsayles@capacitycommercial.com