

Santa Cruz Car Wash For Sale including Real Estate

9801 Compagnoni Street

Bakersfield, CA 93313

\$3.69M
PRICE



Umit Ister

Broker

661-717-2973 (Direct)

umitister@hotmail.com

Ister & Associates Real Estate Group, Inc

1701 Westwind Dr
Suite 124, BAKERSFIELD, CA 93301

661-846-2277

Umit Ister

ISTER & ASSOCIATES
REAL ESTATE GROUP

Santa Cruz Car Wash For Sale including Real Estate

9801 Compagnoni Street
Bakersfield, CA 93313

PRICE

\$3,690,000

CONTENTS

3 Executive Summary

4 Investment Highlights

5 Location Highlights

8 Market Overview

9 Closing

PRESENTED BY



Umit Ister

Broker

661-717-2973

umitister@hotmail.com

Lic # CalDRE 02216657

Ister & Associates Real Estate Group, Inc

1701 Westwind Dr

Suite 124, BAKERSFIELD, CA 93301

661-846-2277

Umit Ister

ISTER & ASSOCIATES
REAL ESTATE GROUP

Executive Summary

9801 Compagnoni Street · Bakersfield, CA 93313

 ASKING PRICE

\$3,690,000

FOR SALE – EXECUTIVE SUMMARY

Santa Cruz Car Wash

Brand New 120-Foot Tunnel | Business & Real Estate Included

Bakersfield, CA – Hwy 99 & Taft Hwy (119)

I

SUMMARY

Santa Cruz Car Wash represents a **premier new-construction car wash investment** in one of Bakersfield’s most heavily traveled corridors, offering immediate operational capability, strong location fundamentals, and long-term upside.

PROPERTY DATA

2025	Newly build with modern design and top of the line equipment
------	--

Investment Highlights

INVESTMENT OVERVIEW

Santa Cruz Car Wash is a **newly constructed, state-of-the-art express tunnel car wash**, built in **2024–2025**, offering a **120-foot tunnel with brand-new, top-of-the-line equipment**. This **turn-key opportunity** includes **both the operating business and the underlying real estate**, making it ideal for owner-operators or investors seeking long-term cash flow in a high-traffic retail corridor.

The property is strategically located along the heavily traveled **Hwy 99 and Taft Highway (Hwy 119)**, benefiting from exceptional exposure, easy access, and strong daily traffic counts. The site is **adjacent to Starbucks** and positioned **directly behind an ARCO gas station**, generating powerful consumer draw and repeat visitation.

INVESTMENT HIGHLIGHTS

- Rare opportunity to acquire a **brand-new car wash asset**
- Minimal deferred maintenance
- Long useful life of improvements and equipment
- Strong express wash and membership revenue potential
- Ideal for **owner-operators, investors, or 1031 buyers**

KEY METRICS



Asking Price

\$3,690,000

Location Highlights

PROPERTY HIGHLIGHTS

- Brand New Car Wash Facility (2024–2025 Construction)
- Business & Real Estate Included
- 120-Foot Express Tunnel
- All New, Top-of-the-Line Car Wash Equipment
- Modern Design & Construction
- Turn-Key Operation
- High-Volume Throughput Capability

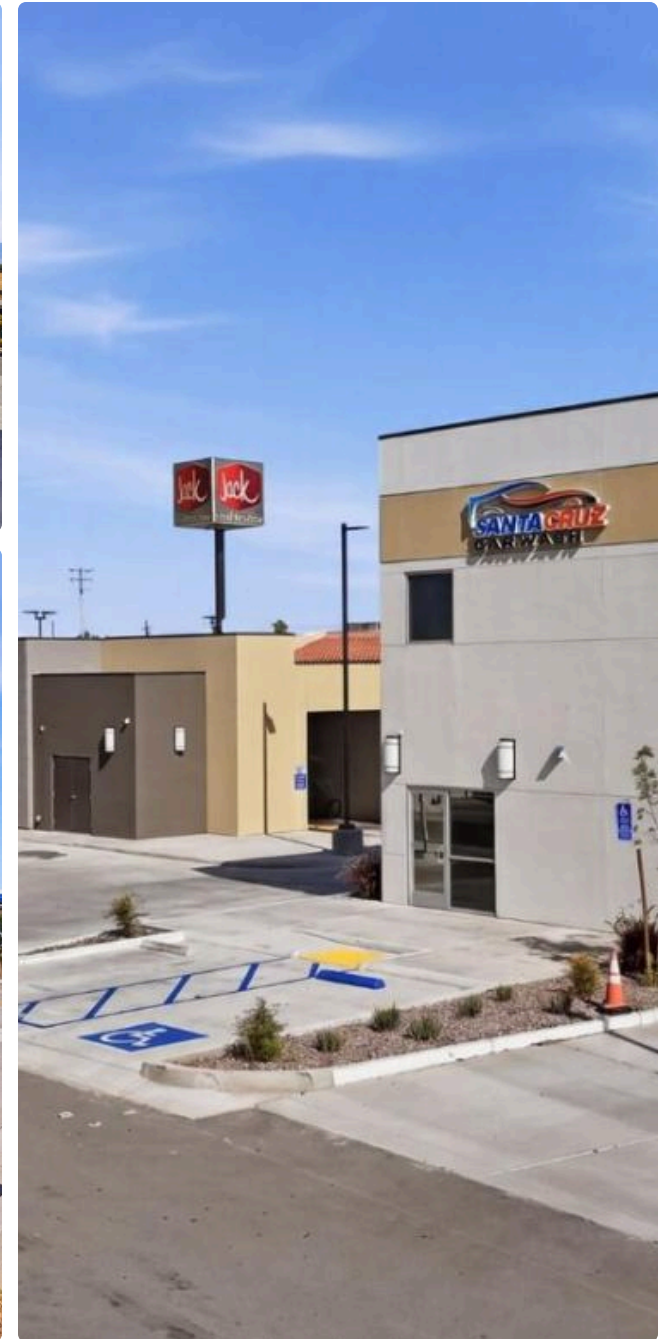
LOCATION ADVANTAGES

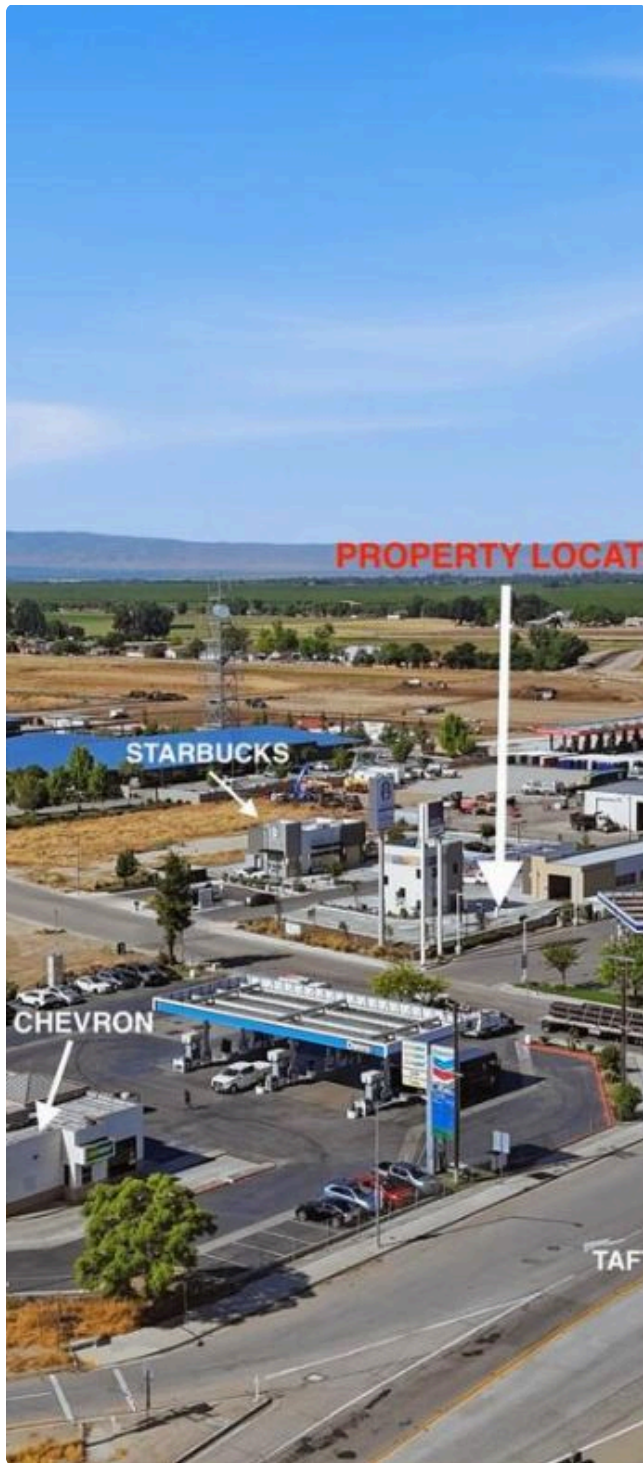
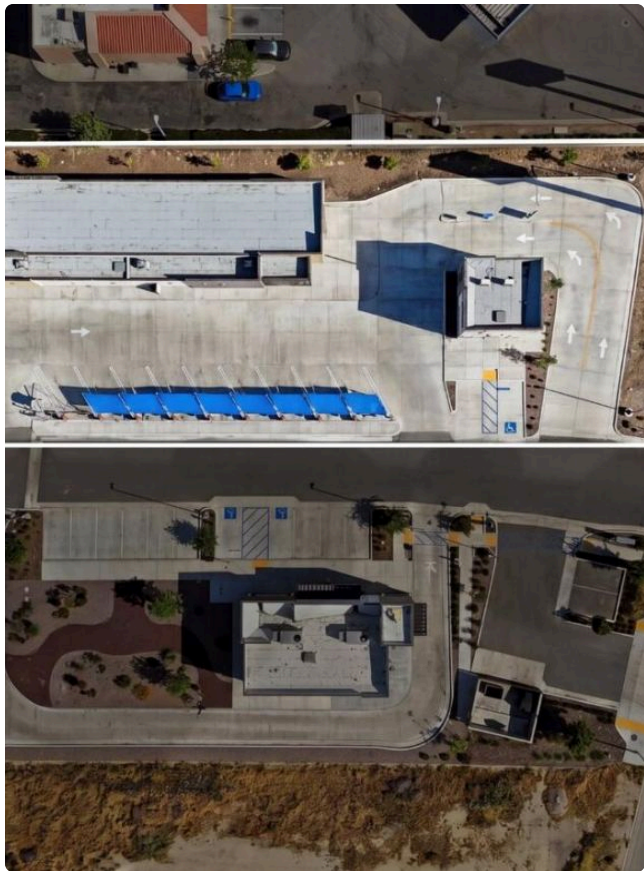
- Prime location near Hwy 99 & Hwy 119 (Taft Hwy)
- Excellent visibility and accessibility
- High traffic counts with strong commuter and retail flow
- Adjacent to Starbucks
- Positioned behind ARCO Gas Station
- Surrounded by national retailers and daily-use services
- Strong population and vehicle-driven demand

LOCATION

Address	9801 Compagnoni Street
City	Bakersfield
State	California
Zip Code	93313

Photo Gallery





Market Overview

Market Overview: Bakersfield, CA

Bakersfield is a city in and the county seat of Kern County, California, United States. The city covers about 151 sq mi (390 km²) near the southern end of the San Joaquin Valley, which is located in the Central Valley region. Bakersfield's population as of the 2020 Census was 403,455, making it the 47th-most populous city in the United States and the 9th-most populous in California. The Bakersfield–Delano Metropolitan Statistical Area, which includes all of Kern County, had a 2020 census population of 909,235, making it the 62nd largest metropolitan area in the United States. Bakersfield is a significant hub for both agriculture and energy production. Kern County is California's most productive oil-producing county and the fourth most productive agricultural county (by value) in the United States. Industries in and around Bakersfield include natural gas and other energy extraction, mining, petroleum refining, distribution, food processing, and corporate regional offices. The city is the birthplace of the country music genre known as the Bakersfield sound. edit Bakersfield's historic and primary industries are related to Kern County's two main industries: oil and agriculture. Kern County in 2013 was the most oil productive county in the US. Kern County is a part of the highly productive San Joaquin Valley and ranks in the top five most productive agricultural counties in the nation. Major crops for Kern County include grapes, citrus, almonds, carrots, alfalfa, cotton, and ros...



KEY FACTS

Population	347,483
Area	150.3 sq mi
Elevation	404 ft
Time Zone	Pacific Time Zone
County	Kern County
Incorporated	1869
State	California

Santa Cruz Car Wash For Sale including Real Estate

9801 Compagnoni Street, Bakersfield, CA, 93313



FOR MORE INFORMATION



Umit Ister

Broker

661-717-2973

umitister@hotmail.com

Lic# CalDRE 02216657

Ister & Associates Real Estate Group, Inc

1701 Westwind Dr

Suite 124, BAKERSFIELD, CA 93301

661-846-2277 Umit Ister

DISCLAIMER

The information contained in the following offering memorandum is proprietary and strictly confidential. It is intended to be reviewed only by the party receiving it from ISTER & ASSOCIATES REAL ESTATE GROUP, INC and it should not be made available to any other person or entity without the written consent of ISTER & ASSOCIATES REAL ESTATE GROUP, INC.

By taking possession of and reviewing the information contained herein the recipient agrees to hold and treat all such information in the strictest confidence. The recipient further agrees that recipient will not photocopy or duplicate any part of the offering memorandum. If you have no interest in the subject property, please promptly return this offering memorandum to ISTER & ASSOCIATES REAL ESTATE GROUP, INC. This offering memorandum has been prepared to provide summary, unverified financial and physical information to prospective purchasers, and to establish only a preliminary level of interest in the subject property. The information contained herein is not a substitute for a thorough due diligence investigation. ISTER & ASSOCIATES REAL ESTATE GROUP, INC has not made any investigation, and makes no warranty or representation with respect to the income or expenses for the subject property, the future projected financial performance of the property, the size and square footage of the property and improvements, the presence or absence of contaminating substances, PCBs or asbestos, the compliance with local, state and federal regulations, the physical condition of the improvements thereon, or financial condition or business prospects of any tenant, or any tenant's plans or intentions to continue its occupancy of the subject property. The information contained in this offering memorandum has been obtained from sources we believe reliable; however, ISTER & ASSOCIATES REAL ESTATE GROUP, INC has not verified, and will not verify, any of the information contained herein, nor has ISTER & ASSOCIATES REAL ESTATE GROUP, INC conducted any investigation regarding these matters and makes no warranty or representation whatsoever regarding the accuracy or completeness of the information provided. All potential buyers must take appropriate measures to verify all of the information set forth herein. Prospective buyers shall be responsible for their costs and expenses of investigating the subject property.

PROPERTY SHOWINGS ARE BY APPOINTMENT ONLY.

PLEASE CONTACT THE ISTER & ASSOCIATES REAL ESTATE GROUP, INC ADVISOR FOR MORE DETAILS.