

MEDICAL OFFICE SPACE FOR LEASE



This 1,036sf medical office space is efficiently laid out, in excellent condition, and has served as a successful ophthalmology office for decades. The office features a dedicated reception area and waiting room, 3 exam rooms, private office, private bathroom, small kitchenette, and storage space. The office is well located towards the front of a premier medical office complex in Santa Cruz that is adjacent to Dominican Hospital and many other medical providers. There is ample onsite parking for patients.

1667 Dominican Way #130
Santa Cruz, CA 95065

Building Size: 1,036sf
Asking Rent: \$3.25/sf/mg



OW COMMERCIAL

For More Information Please Contact:

Benjamin Ow | (831) 247-1175 | benjaminmow@gmail.com

The information contained herein has been secured from sources we believe reliable, but we make no warranties, expressed or implied, as to the accuracy of the information. References to square footage or age are approximate. Buyer must verify the information and bears all risk for any inaccuracies.



For More Information Please Contact:

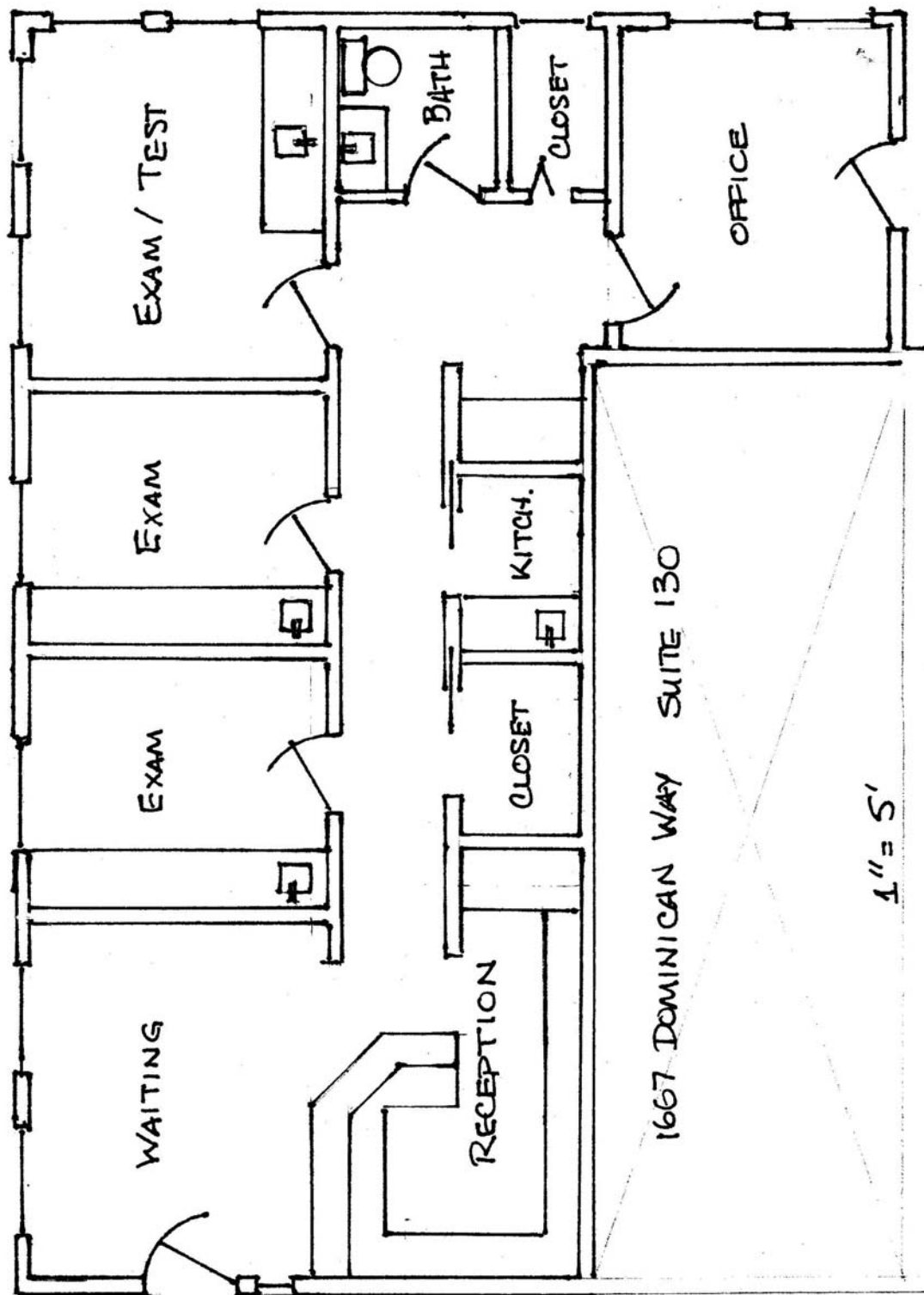
Benjamin Ow | (831) 247-1175 | benjaminmow@gmail.com



OW COMMERCIAL

The information contained herein has been secured from sources we believe reliable, but we make no warranties, expressed or implied, as to the accuracy of the information. References to square footage or age are approximate. Buyer must verify the information and bears all risk for any inaccuracies.

FLOOR PLAN



OW COMMERCIAL

For More Information Please Contact:

Benjamin Ow | (831) 247-1175 | benjaminmow@gmail.com

The information contained herein has been secured from sources we believe reliable, but we make no warranties, expressed or implied, as to the accuracy of the information. References to square footage or age are approximate. Buyer must verify the information and bears all risk for any inaccuracies.