



Hinerfeld
COMMERCIAL REAL ESTATE

Available for Lease



Northeastern Pennsylvania

I-81 Corridor Minutes to I-476, 380, 84 & 80

Located Between the Principle Cities of Scranton and Wilkes-Barre

*18,908 sf Building
Ideal for Retail/Industrial/Flex Use*

**733 Davis Street, Scranton
Lackawanna County, Pennsylvania**

Hinerfeld
COMMERCIAL REAL ESTATE
570-207-4100

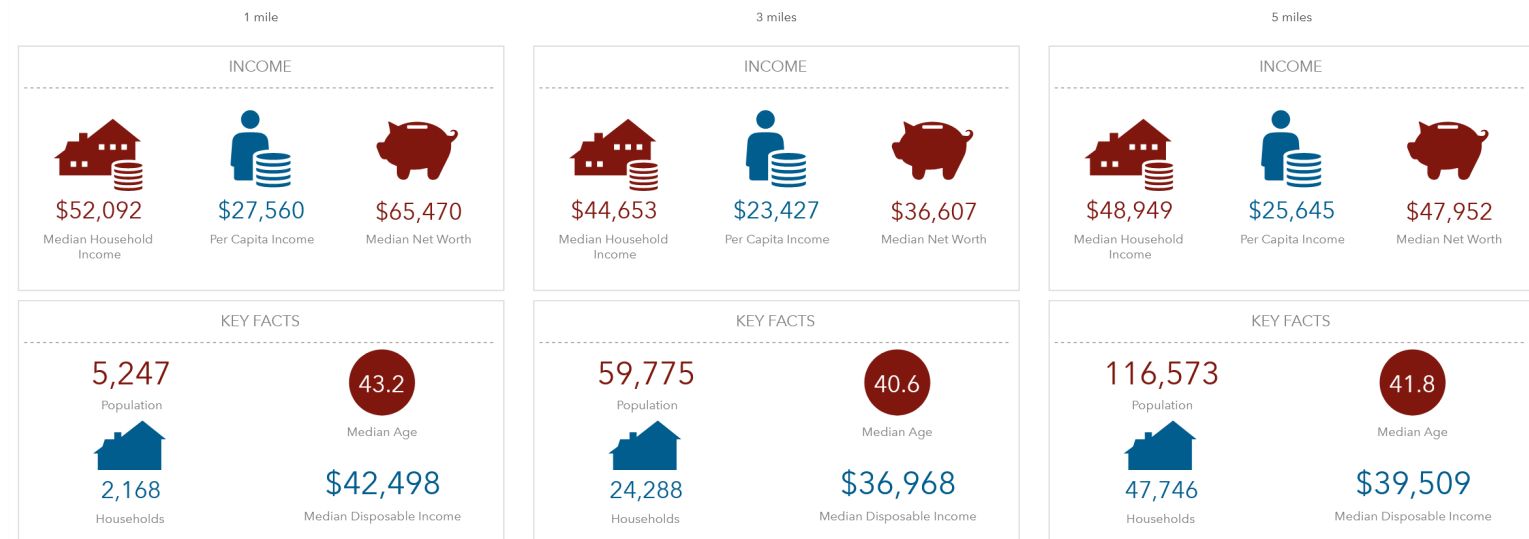
Elijah G. Miller | 570-690-4352 | emiller@hinerfeldcommercial.com
Hinerfeld Commercial Real Estate | 570-207-4100 | www.hinerfeldcommercial.com



2.6 miles +/- 6 min.
1/2 mile Interstate 81 > 1 min.

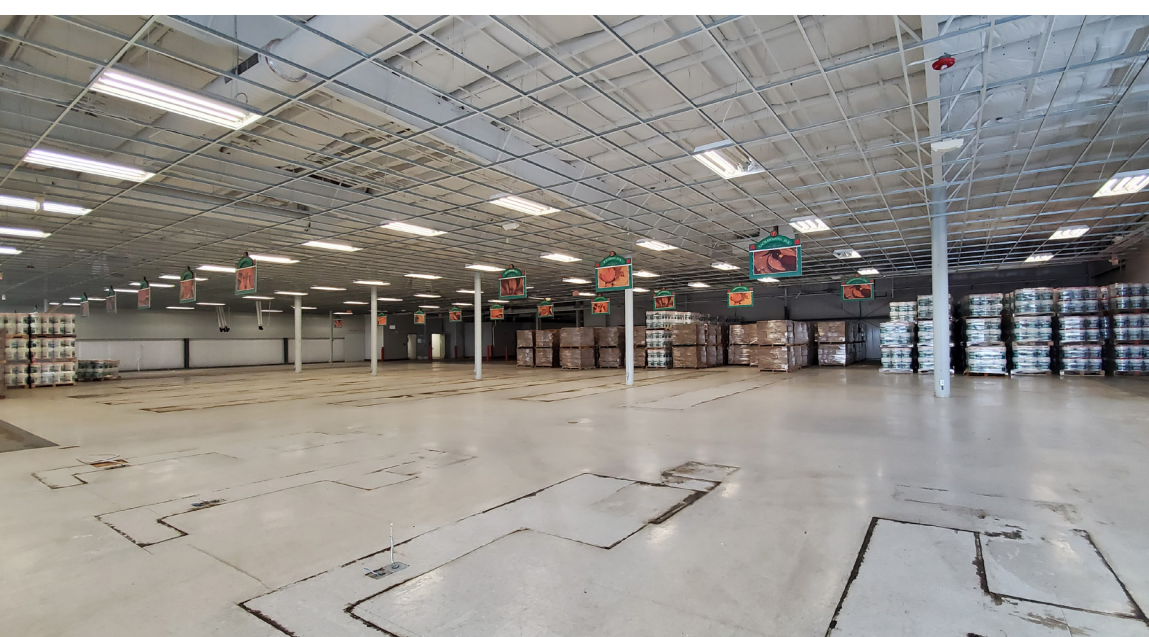
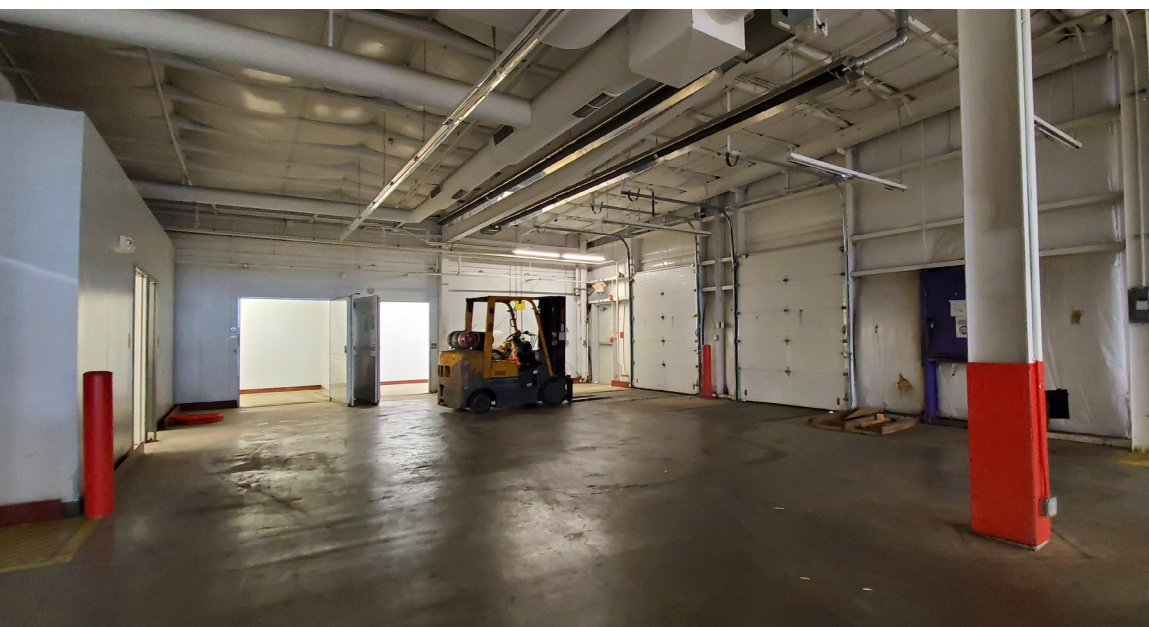


5 miles Wilkes-Barre Scranton International Airport 7 min.



Elijah G. Miller

Hinerfeld Commercial Real Estate | 570-207-4100 | emiller@hinerfeldcommercial.com



Building Features

- 733 Davis Street, Scranton Pennsylvania 18505
- 18,908 SF former retail building comprised of a 16,790 SF open floor area, wetroom, 2 walk-in coolers, 3 restrooms, breakroom, 3 offices, and 2 utility rooms.
- Two tailgate doors with load levelers;
- Busy travel corridor, surrounded by additional retail. 17,507 ADT (ESRI)
- Two 800 amp panels for 480y/277 volts AC 3 phase 4 wire and two 225 amp panels for 208y/120 volts 3 phase 4 wire.
- Rooftop HVAC units provide heating and air conditioning throughout the building. The dock area contains Radiant Infrared Gas-Fired Tube Heaters for additional heat during loading/unloading.
- Zoning is I-L with retail a non-conforming use
- Built in 2009.
- 20' x 57' center to center column spacing.
- 146' x 115' main portion.
- Clear height at front is 17' 10" sloping down to 13' clear at the rear (near docks).
- Power and outlets are available under the slab (former check out area) and along each column equipped with outlets.
- Public water, sewer, and natural gas

**Rate and Term Negotiable
Immediately Available!**

